

Changing the visibility level of Territories

Once you have Territories added as a layer to your project you can use the **Territories Panel** to control the appearance of the layer, as well as the data associated with it. The following instructions will give you a step by step guide on how to specify at what point your Territories are displayed as you zoom in and out of the map. This is useful for large or detailed data sets that are not easy to interpret until you zoom in.

Before you begin

Before you start styling your Territories, make sure that you have your data set up in a saved project. If you need assistance getting the data into SKiN please refer to the following sections:

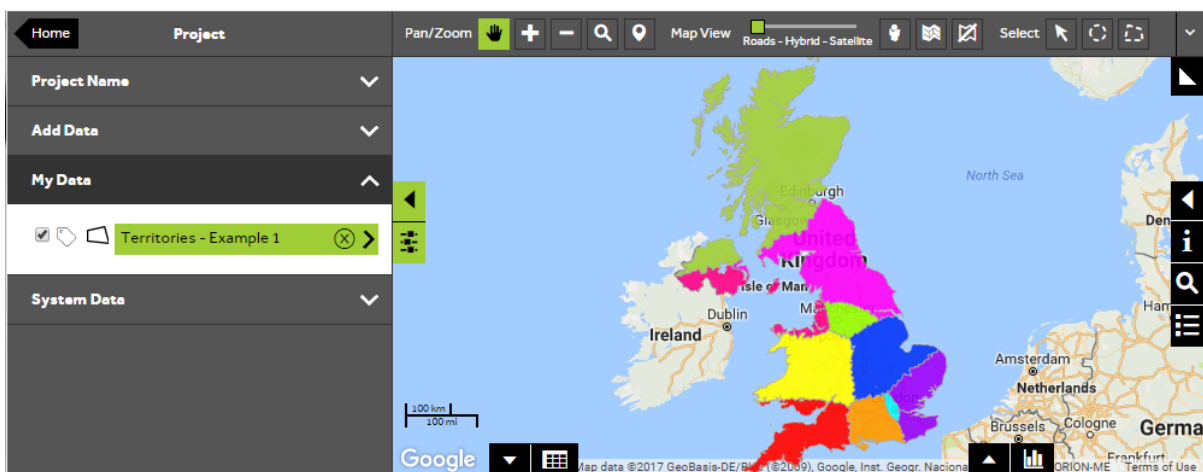
- Territories Steps - Create Project
- Territories Steps – Import Data



1 of 4

Style a Territories layer

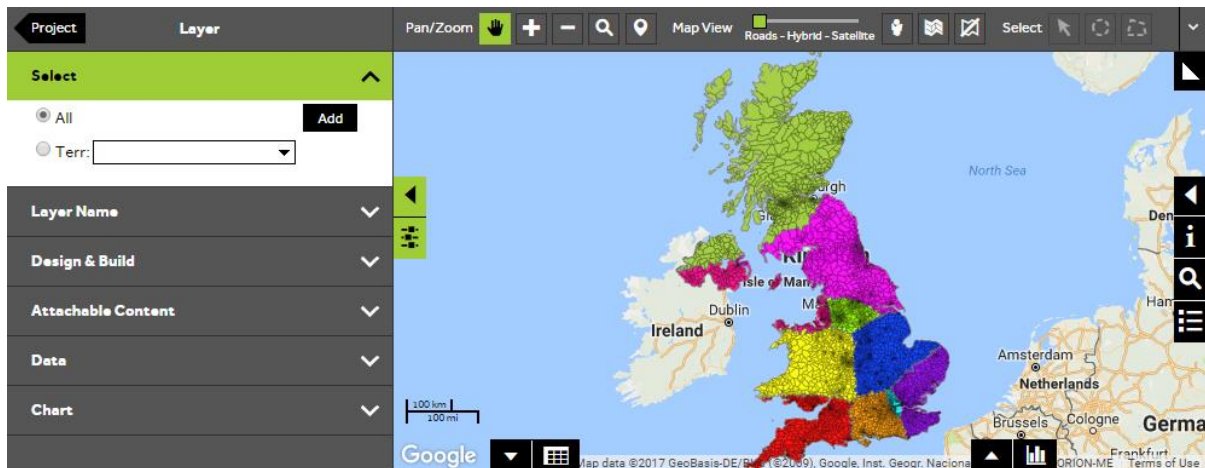
- To style your own data, **Open an existing project** and then select **My Data**, click on the Territory layer you wish to style.



2 of 4

Select Territories to update

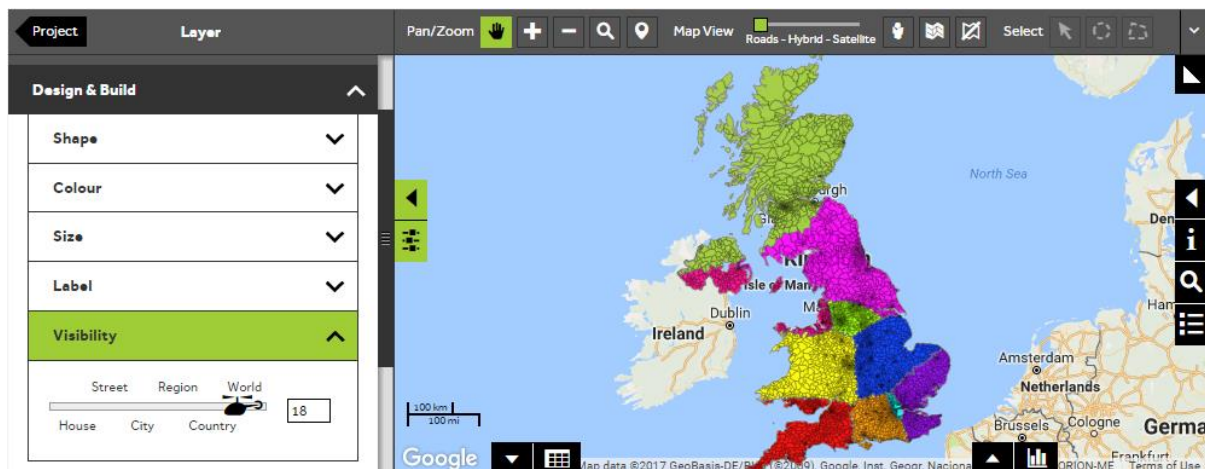
- In the **Select** section of the panel, you can control whether to update all Territories in the layer or just a single Territory. To update all Territories, make sure that the **All** button is selected. To select an individual Territory, click on the **Terr** button, then start to type the Territory Identifier in the text box and select the required Territory from the drop down list.



3 of 4

Select the visibility panel

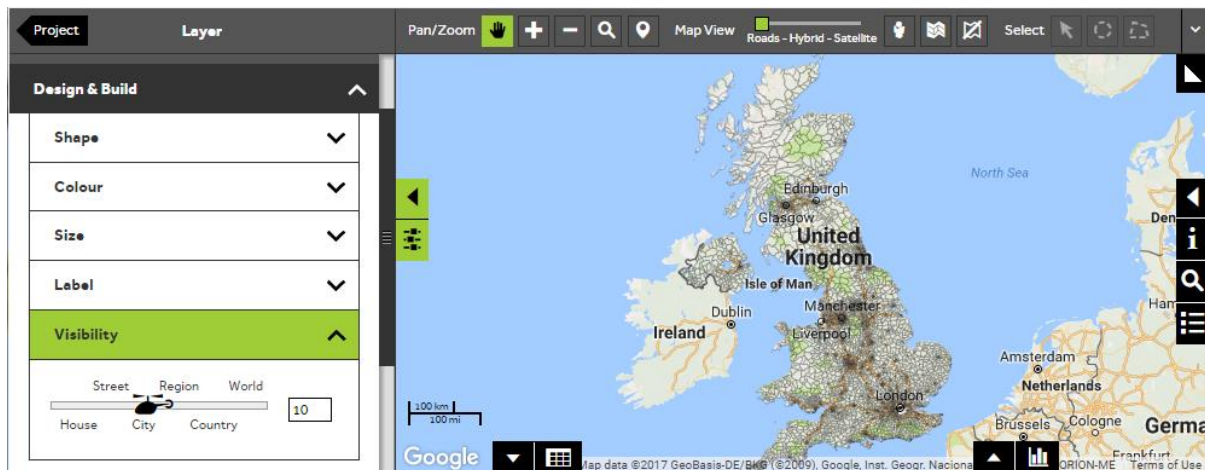
- Within the layer editor panel select **Design and Build**, from here you can control how the Territories are displayed. Expand the **Visibility** section to control the zoom level at which your Territories are displayed.



Select visibility level

- Initially all layers are set to the visibility level **World** which means that the Territories in your layer will be visible regardless of the zoom level. To change the maximum visibility level click and drag the slider or type a value between 1 and 20 in the number box. A value of 20 means that the selected Territories will be visible at all levels and a value of 1 means that the selected Territories will only be displayed at very zoomed in levels.

After changing the visibility level you may find that your Territories are no longer visible on the map. To display your Territories again, you will need to click on the **Zoom tool** which can be found above the map and zoom into the level that you have setup for your layer.



What do you want to do next?

You may wish to attach content to your Territories such as photos, documents or videos or you may wish to create a report. Please refer to the following sections for further assistance:

- Refer to: **Territories Steps – Attach Content**
- Refer to: **Territories Steps – Create Output - Report**
- Contact: **Geoplan Support**