

Changing the colour of Territories

Once you have Territories added as a layer to your project you can use the **Territories Panel** to control the appearance of the layer, as well as the data associated with it. The following instructions will give you a step by step guide on how to change the colour of a Territory, the Territory borders and also the transparency of the Territories and their borders.

Before you begin

Before you start styling your Territories, make sure that you have your data set up in a saved project. If you need assistance getting the data into SKiN please refer to the following sections:

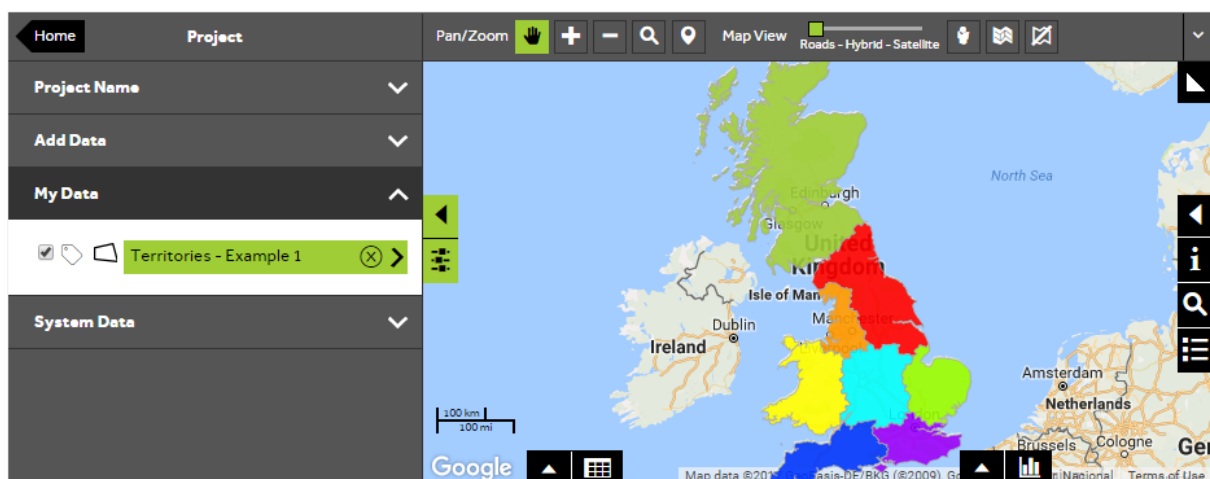
- Territories Steps - Create Project
- Territories Steps – Import Data



1 of 7

Style a Territories layer

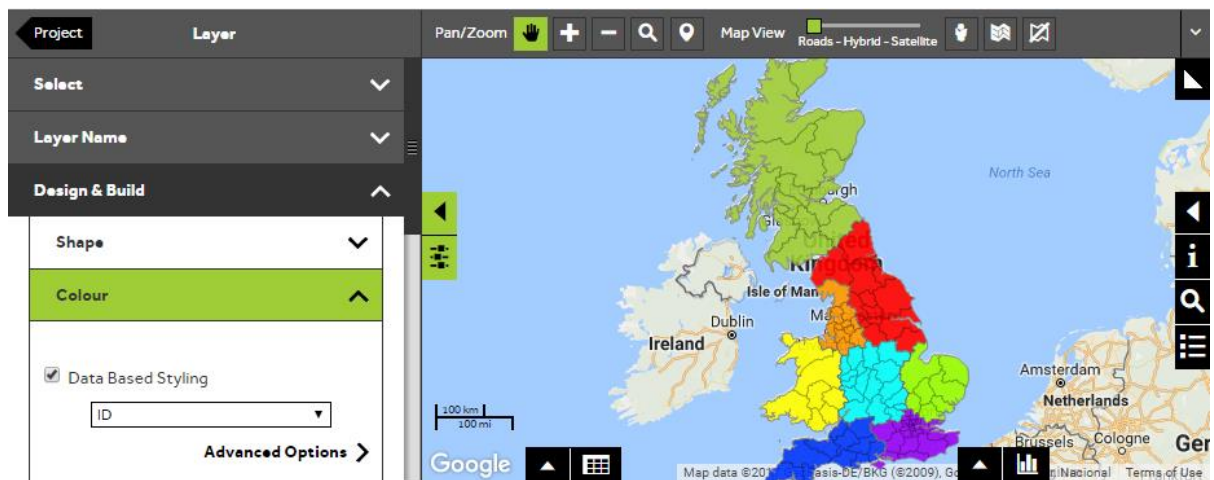
- To style your own data, **Open an existing project** and then select **My Data**, click on the Territories layer you wish to style.



2 of 7

Select the colour panel

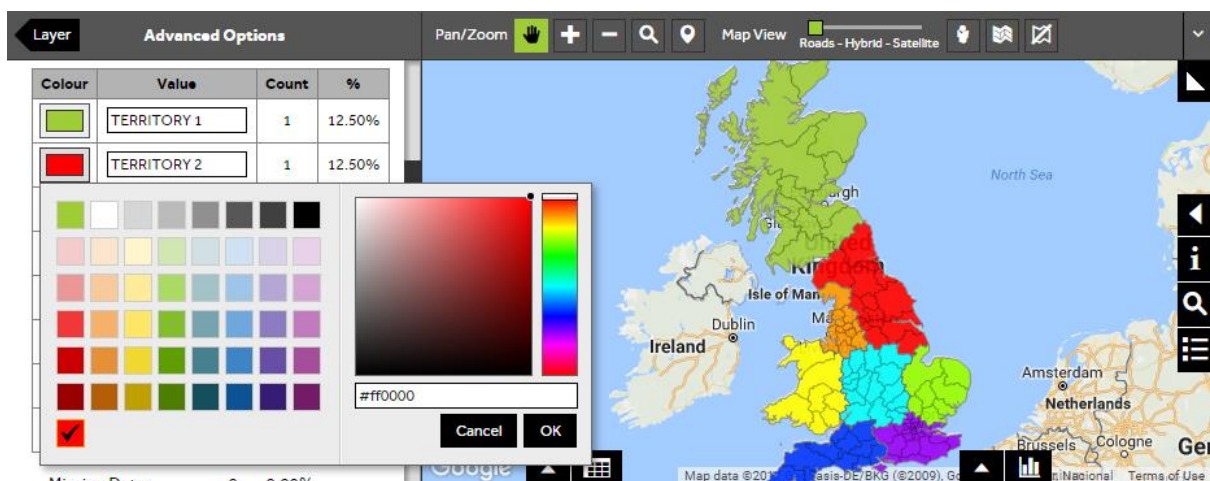
- Within the layer editor panel, select **Design and Build**, from here you can control how the Territories are displayed. Expand the **Colour** section. To automatically apply a different colour to each territory, make sure that the **Data Based Styling** box is ticked, and that ID is selected in the dropdown list (note that this option is only available when you have all territories selected). Alternatively you can choose a different column to classify your Territories on.



3 of 7

Use Advanced Options to change colour

- You can make changes to the way your Territories are coloured through **Advanced Options**. To change the colour of a Territory, click on the colour box next to the Territory name that you wish to change, and the colour palette will be displayed. Click on the required colour to select it. The map will update automatically. Click on the **Layer** back arrow to return to the colour panel.



Use Advanced Options to change number values

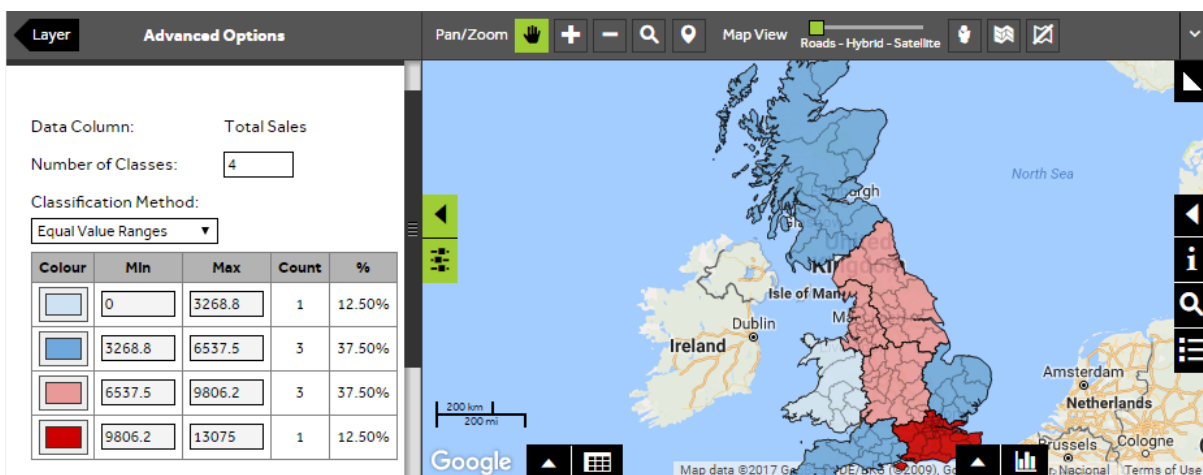
- Alternatively, if the data column you chose to base your Territories on was a numeric variable such as total sales, then you can change the **Number of Classes** by entering a new value in the box and the **Classification Method** by selecting a method from the dropdown list. The classification methods available are:

Equal Value Ranges - The data will be grouped into your chosen number of categories; each with the same sized range values. Equal Value range maps are easy to interpret and are good for visualising uniform distribution and continuous data. It is not an appropriate classification method where the data is clustered around only a few values.

Equal Class Counts - You can evenly distribute your data into a chosen number of categories; each will contain an equal number of records. However data with similar values may end up in different categories.

Custom Ranges - You will be able to set the range values of each class. This can be useful if you wish to round numbers e.g. 5000 – 10,000 or map the data according to specific KPIs.

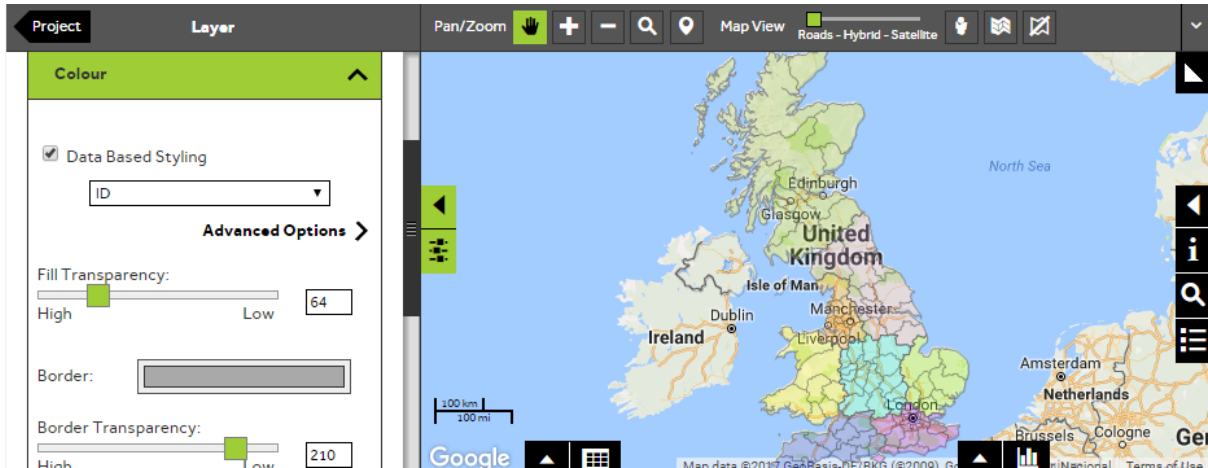
- You can also change the colour of individual classes by clicking on the colour box next to a class and selecting a new colour. Press the **Layer** back arrow to return to the layer editor once you are happy with your settings.



5 of 7

Change the fill transparency

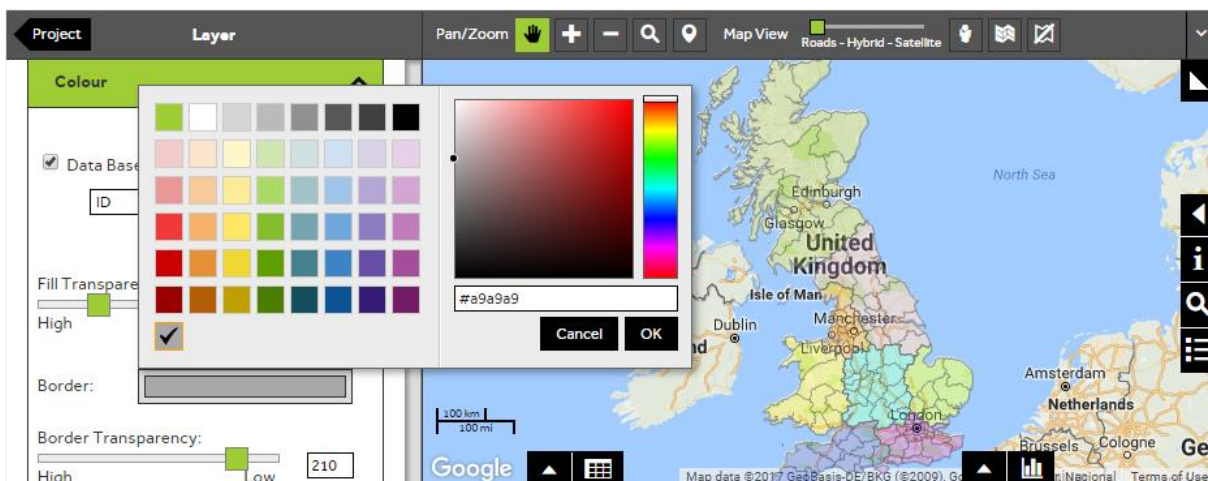
- You can change the level of transparency of your Territories by clicking and dragging the bar underneath **Fill Transparency**. If you want your Territories to be very transparent so that you can see features underneath the Territories drag the bar towards the **High** end of the bar. To make your Territories more opaque, drag the bar towards the **Low** end.



6 of 7

Change the border colour

- You can change the colour of the border of your Territories by clicking in the coloured box next to **Border** and selecting the required colour from the palette.

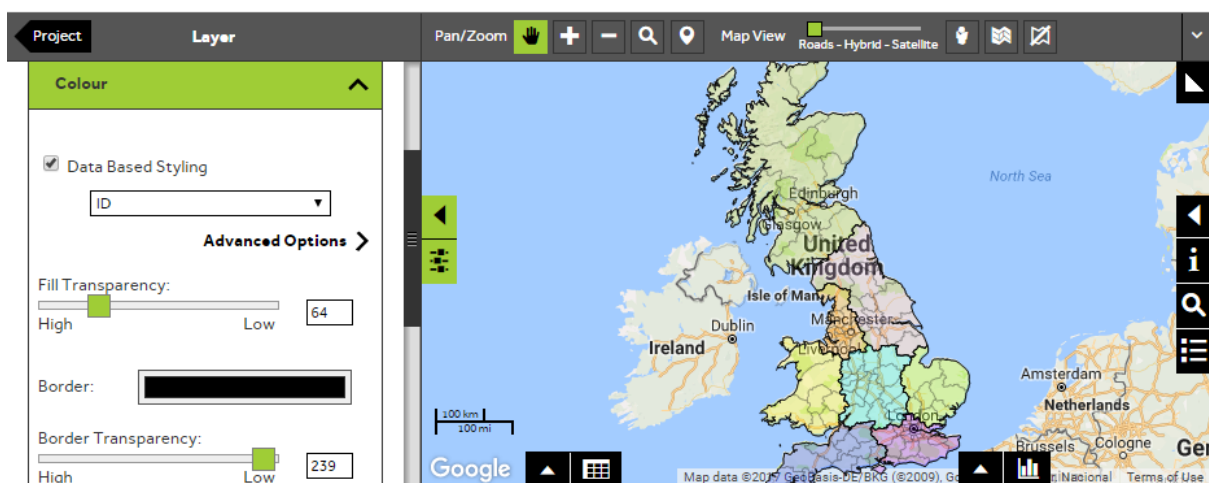


7 of 7

Change the border transparency

- You can change the transparency of the border colour of your Territories in the same way as the **Fill** colour, by clicking and dragging the bar underneath **Border Transparency**. If you want your Territory borders to be very transparent so that you can see features underneath, drag the bar towards the **High** end of the bar. To make your Territory borders more opaque drag the bar towards the **Low** end.

TIP: Make sure that you select **Save** regularly to ensure any changes are saved.



What do you want to do next?

You may wish to change the size of your Territories by adding or removing components, or you may wish to change the labels of your Territory layer. Please refer to the following sections for further assistance:

- Refer to: **Territories Steps – Style Layer - Labels**
- Refer to: **Territories Steps – Add or Remove Components**
- Contact: **Geoplan Support**