

Using the Select Tool

The **Select Tool** allows you to highlight features on the map and see the data associated with them. The following instructions will give you a step by step guide on how to use the select tool.

Before you begin

Before you can use the select tool within SKiN, you may wish to have your data set up in a saved project. If you need assistance getting the data into SKiN please refer to the following sections:

- Territories Steps - Create a project
- Territories Steps – Manually Add
- Territories Steps – Import Data
- Territories Steps - Add Existing Layer



1 of 5

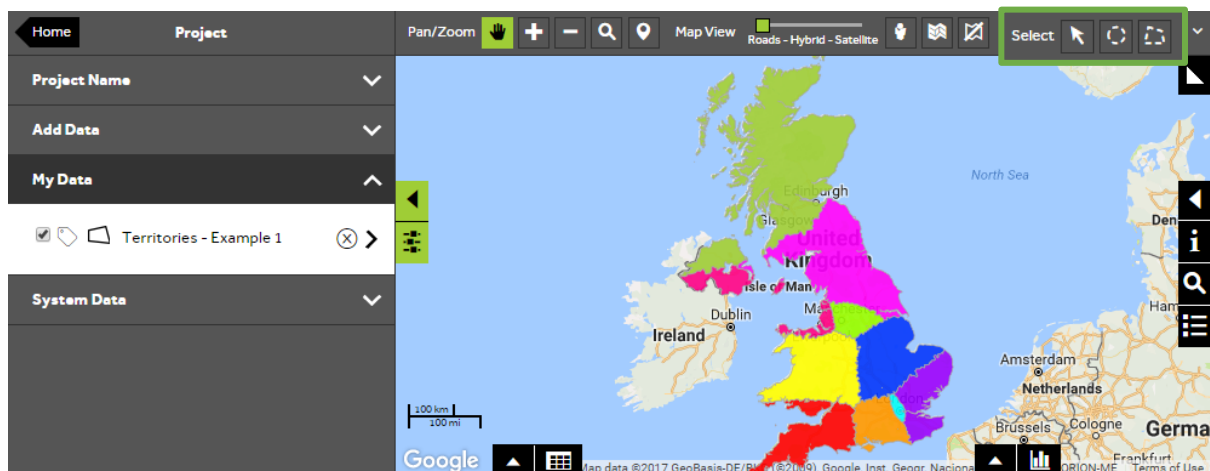
Select Tool options

- To access the **Select Tool** you must be at **Project level** and not Layer level. The header at the top of the left hand panel will indicate the level. If it shows **Layer**, click on the **Project** arrow to return to Project level. There are 3 tools that you can use to select data from the map:

Single Select – Select a single feature on the map.

Radial Select – Click and drag to draw a radius around a set of features.

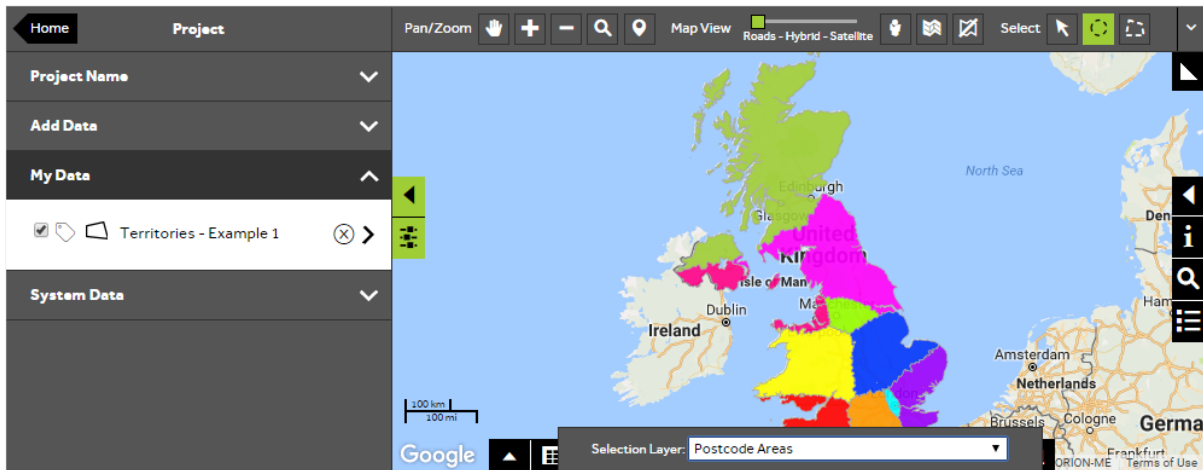
Area Select – Click and drag to draw a specific area on the map.



2 of 5

Choose a Select Tool

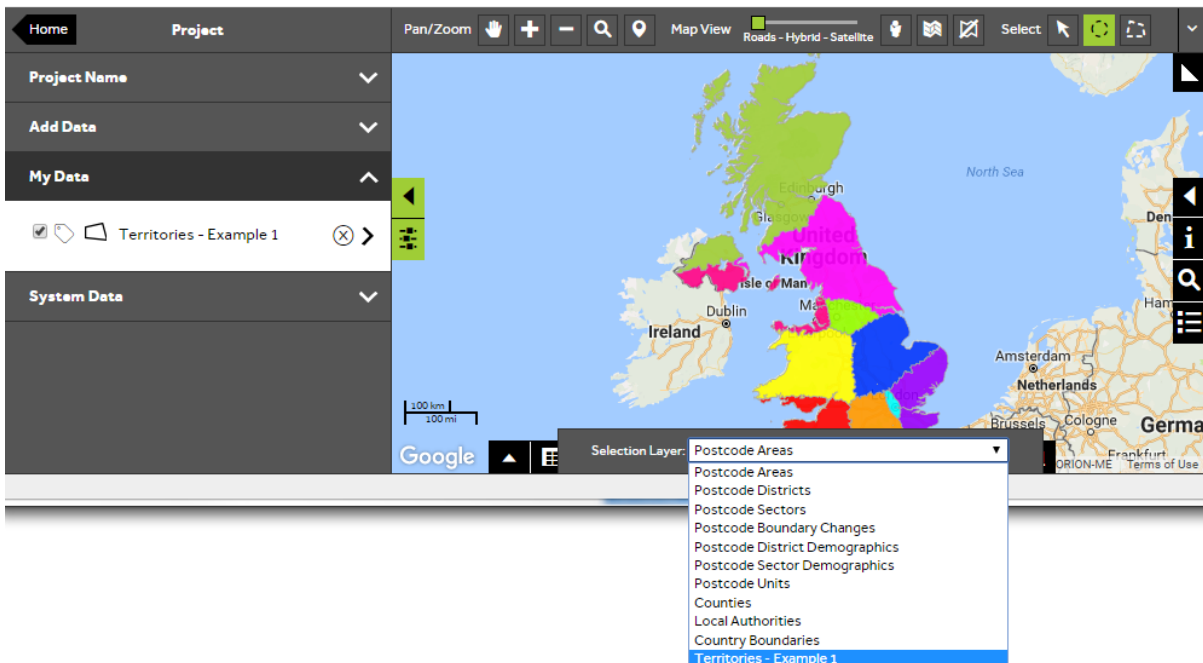
- Click on one of the Select Tools such as the **Drag a Radius** tool. The **Selection Layer** option will display at the bottom of the screen.



3 of 5

Choose which layer to select

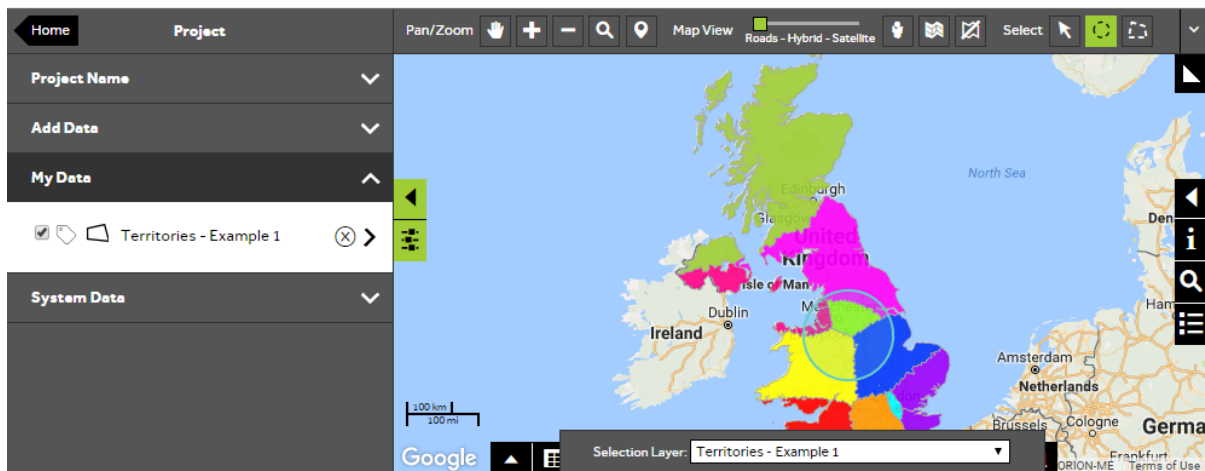
- Use the dropdown from the **Selection Layer** box and select the layer you wish to use. The layer options will be all of the system data layers and any my data layers within the project.



4 of 5

Draw selection on the map

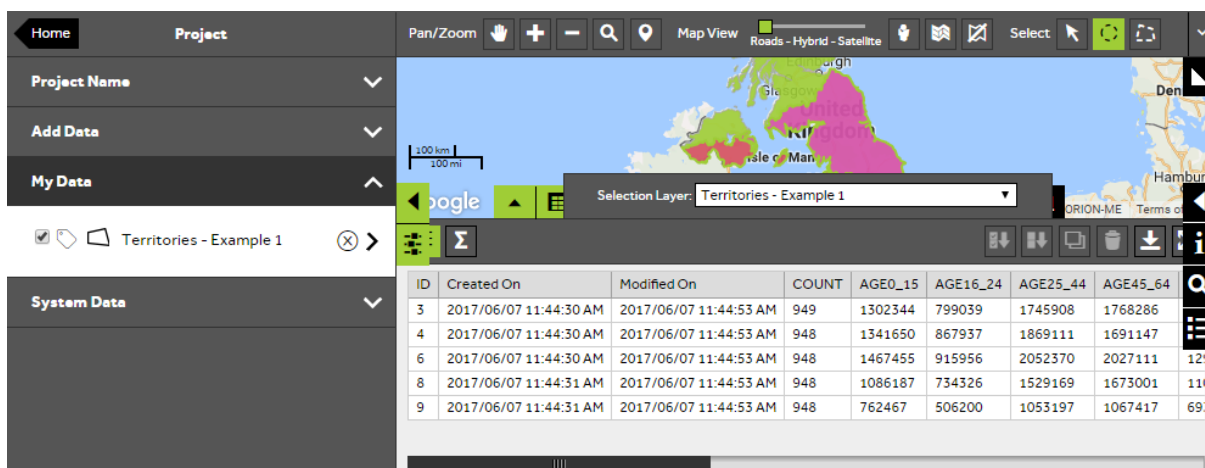
- Once the selection layer has been chosen, draw around the area of interest on the map.



5 of 5

Open Data View to see selected features

- After selecting the area, the data view will automatically open and show the data associated with the selected features.



What would you like to do next?

If you would like further ideas on how to use your data within SKiN please refer to the following sections:

- Watch a video on: **Exporting data**
- Refer to: **Territory Steps – Create Output – Report**
- Refer to: **Territory Steps – Create Output – Export**
- Contact: **Geoplan Support**