

Using the Info Tool

The **Info tool** can be accessed by clicking the **i** button to open the **Info Panel**.

The following instructions will give you a step by step guide on how to use the info tool.

Before you begin

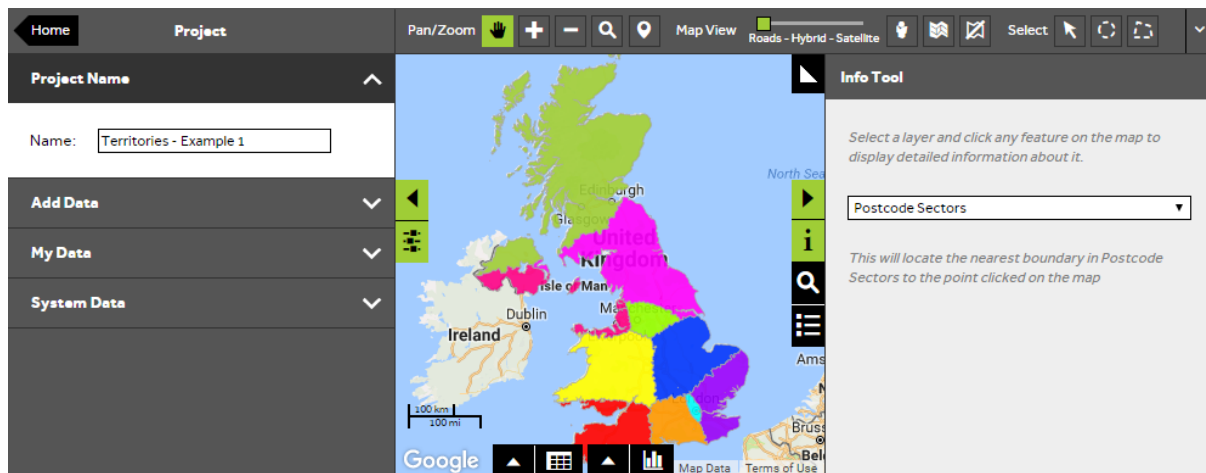
Before you can use the Info tool within SKiN, you may wish to have your data set up in a saved project. If you need assistance getting the data into SKiN please refer to the following sections:

- Territories Steps - Create a Project
- Territories Steps – Import Data



1 of 3 Open the Info Tool

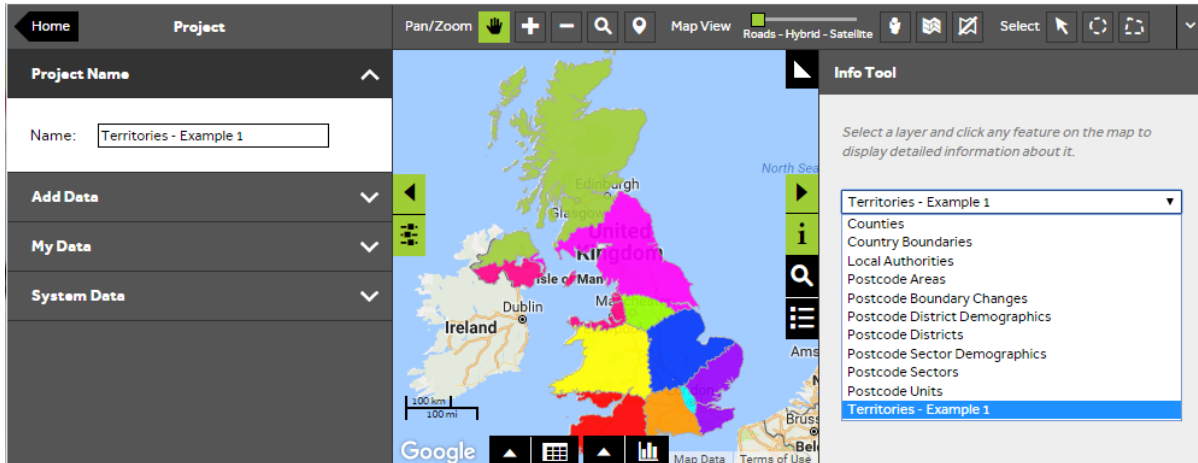
- To find information about territories on the map, **Open an existing project** and then select the **Info Tool** to the right of the map.



2 of 3

Choose the type of information

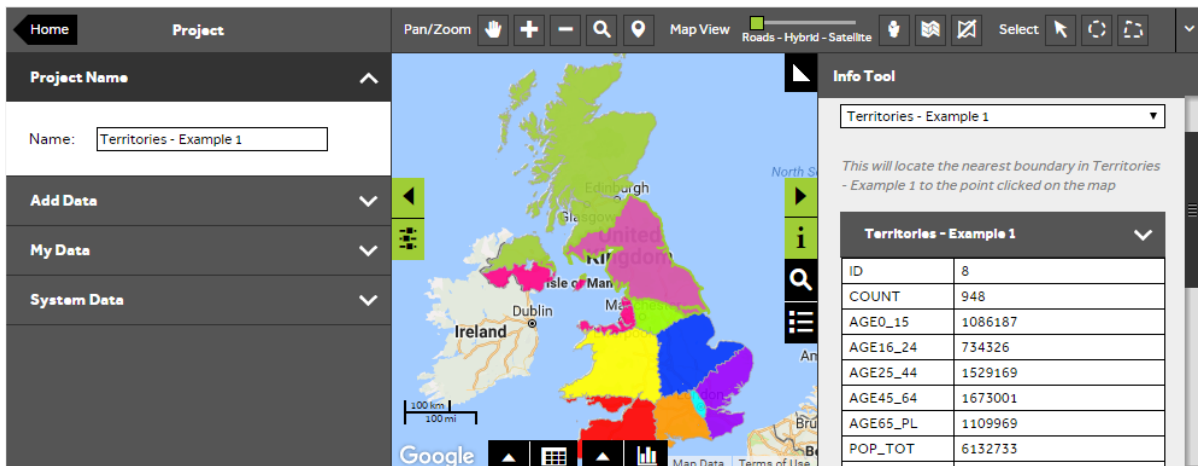
- From the Info panel, you can select any layer from your project and also system data layers from the info tool dropdown box.



3 of 3

Information selection

- From the dropdown box select the type of information you would like to interrogate, then click on the feature on the map to reveal the details associated with it.



What do you want to do next?

You may wish to change the size or colour of your territories or create a territory report, please refer to the following sections for further assistance:

- Refer to: **Territory Steps – Add / Remove Components**
- Refer to: **Territory Steps – Style Layer – Changing Colour**
- Refer to: **Territory Steps – Create Output - Report**
- Contact: **Geoplan Support**