

Creating a new Territory

Once you have Territories added as a layer to your project you can use the **Territories Panel** to control the appearance of the layer, as well as being able to edit existing and adding new Territories to the layer. The following instructions will give you a step by step guide on how to add a new Territory to your layer and how to change the size of the Territory.

Before you begin

Before you start editing your Territories, you will need to make sure that you have the data set up in a saved project. If you need assistance getting the data into SKiN please refer to the following sections:

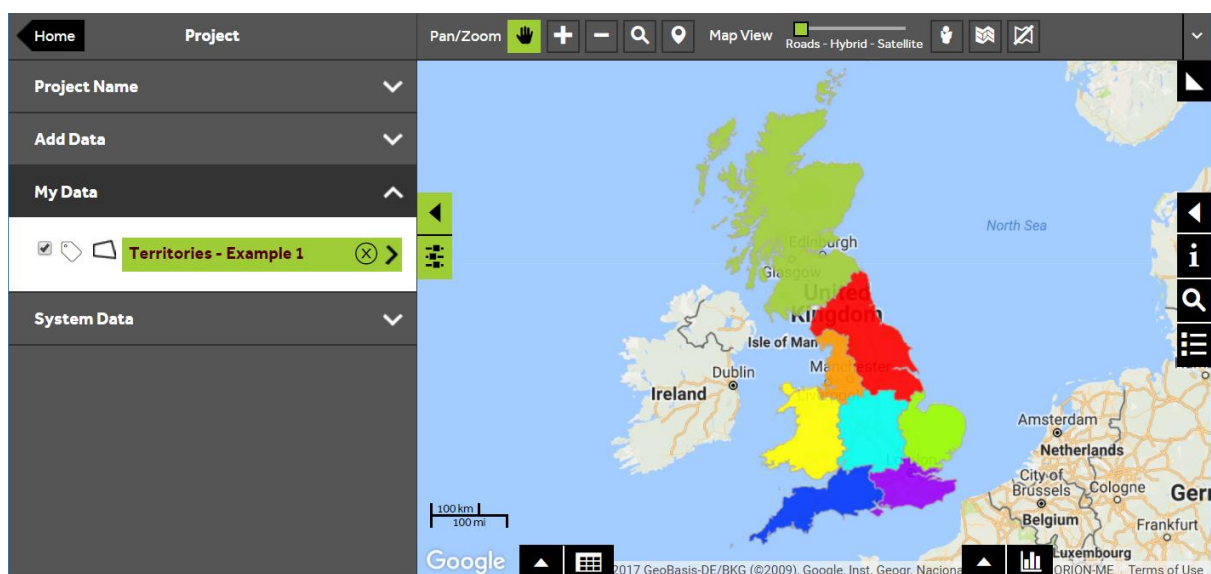
- Territories Steps - Create Project
- Territories Steps – Import Data



1 of 5

Modifying a Territories layer

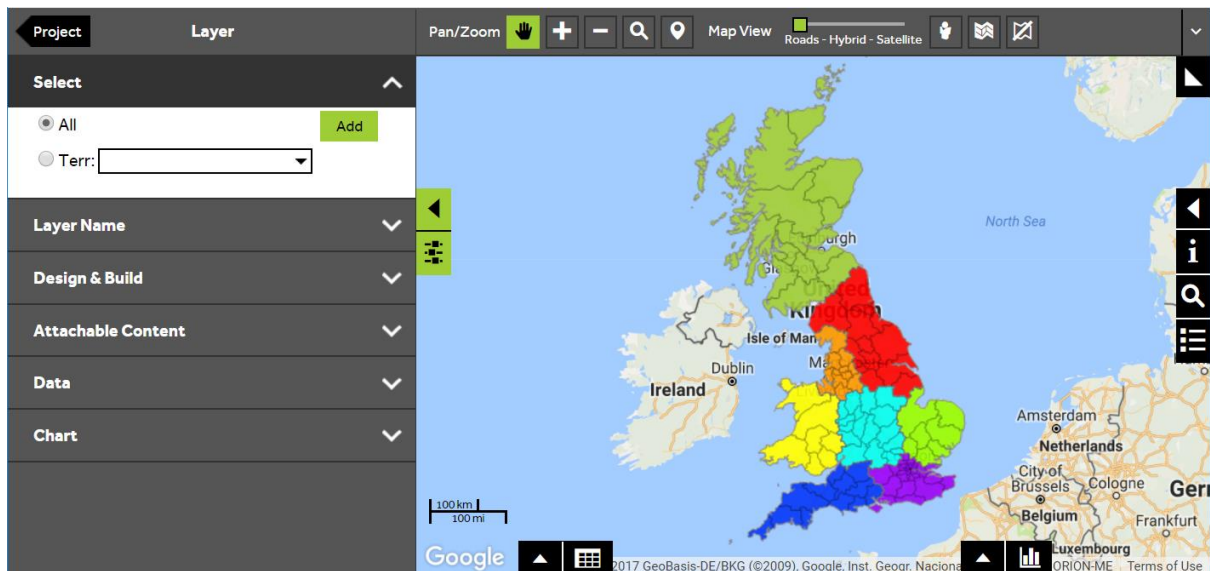
- To modify your own data, **Open an existing project** and then select **My Data**, click on the Territories layer you wish to edit.



2 of 5

Add a new Territory

- Within the layer editor panel in the **Select** section, ensure **All** is selected, and click on **Add**. You will notice the cursor change into edit mode, ready for you to create your Territory on the map.



3 of 5

Create your new Territory on the map

- To select a component for your new Territory, click on the map at the required location. You can then add further components (Territory building-blocks) by clicking on them.
- The new Territory can also be viewed within the data view. Click on the **data grid** button at the bottom left of the map to see how Territory values change as components are added or removed.

#	ID	COUNT	Total Sales	Product A	Product B	Product C	Product D	Product E
Edit	Territory 9	1	443	113	161	66	13	90
Edit	TERRITORY 1	15	4521	1605	1506	487	76	847
Edit	TERRITORY 8	31	13075	3574	4684	2241	488	2088
Edit	TERRITORY 7	12	4663	951	1814	862	185	851
Edit	TERRITORY 6	17	9079	2340	3390	1652	349	1348

Editing the Territory

- You can change the size of a new or existing Territory by adding or removing individual component blocks, or by selecting groups of components. To access alternative selection methods, open the **Design & Build** section and select **Size**.

The **Single** select tool allows you to add / remove one 'building-block' at a time. To use this method, click on the Territory component on the map that you would like to add. The map will update automatically.

The **Polygon** select tool allows you to draw a shape on the map and add whichever 'building-blocks' fall within the shape. To use this method, click on the map around the area that you wish to add to your Territory to form a polygon shape, and click on the first point to close the shape. The map will update assigning the selected bricks to your Territory.

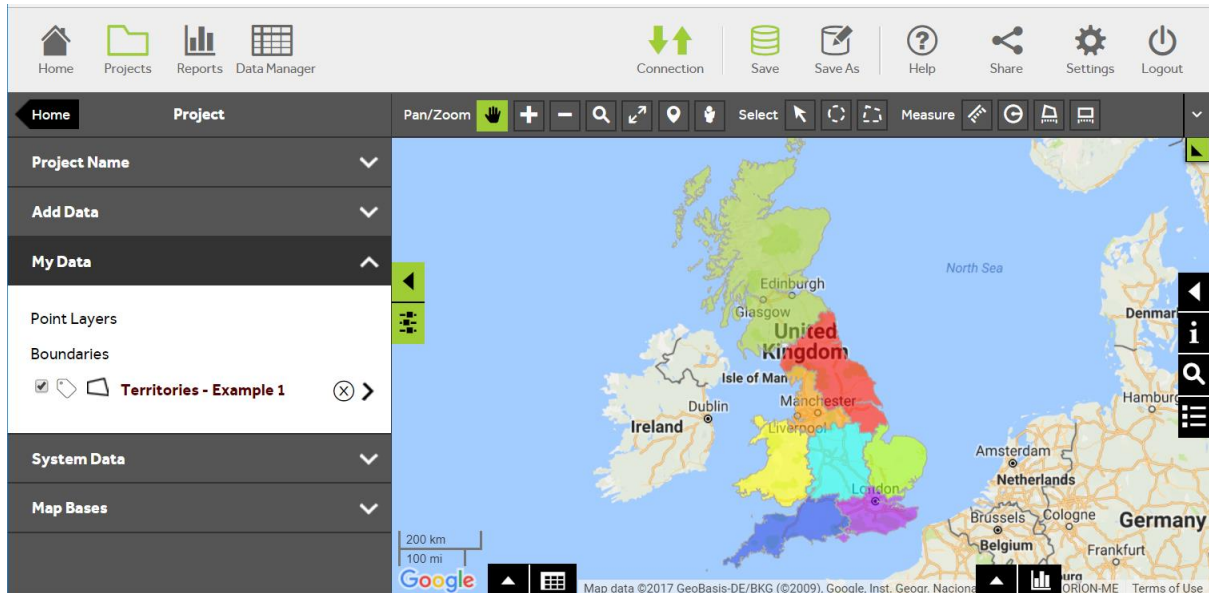
The **Radius** select tool allows you to draw a circle on the map and add whichever 'building-blocks' fall within the circle. To use this method, click on the map at the centre of the area that you wish to add and drag the mouse to create a circle around the area you wish to add. Let go of the mouse to finish. The map will update assigning the selected bricks to your Territory.

#	ID	COUNT	Total Sales	Product A	Product B	Product C	Product D	Product E
<input type="checkbox"/>	Edit Territory 9	1	443	113	161	66	13	90
<input type="checkbox"/>	Edit TERRITORY 1	15	4521	1605	1506	487	76	847
<input type="checkbox"/>	Edit TERRITORY 8	31	13075	3574	4684	2241	488	2088
<input type="checkbox"/>	Edit TERRITORY 7	12	4663	951	1814	862	185	851
<input type="checkbox"/>	Edit TERRITORY 6	17	9079	2340	3390	1652	349	1348

5 of 5

Save your project

- Once you have made your Territory changes, click on **Save** to save your updated layer.



What do you want to do next?

You may wish to change the colour of your Territory or balance your Territories based on a column in your data. Please refer to the following sections for further assistance:

- Refer to: **Territories Steps – Style Layer - Colour**
- Refer to: **Territories Steps – Balance Territories**
- Refer to: **Territories Steps – Add or Remove Components**
- Contact: **Geoplan Support**