

## Changing the visibility level of Map Pins

Once you have Map Pins added as a layer to your project you can use the **Map Pins Panel** to control the appearance of the layer, as well as the data associated with it. The following instructions will give you a step-by-step guide on how to specify at what point your Map Pins are displayed as you zoom in and out of the map. This is useful for large or detailed data sets that are not easy to interpret until you zoom in.

### Before you begin

Before you start styling your Map Pins, make sure that you have your data set up in a saved project. If you need assistance getting the data into SKiN please refer to the following sections:

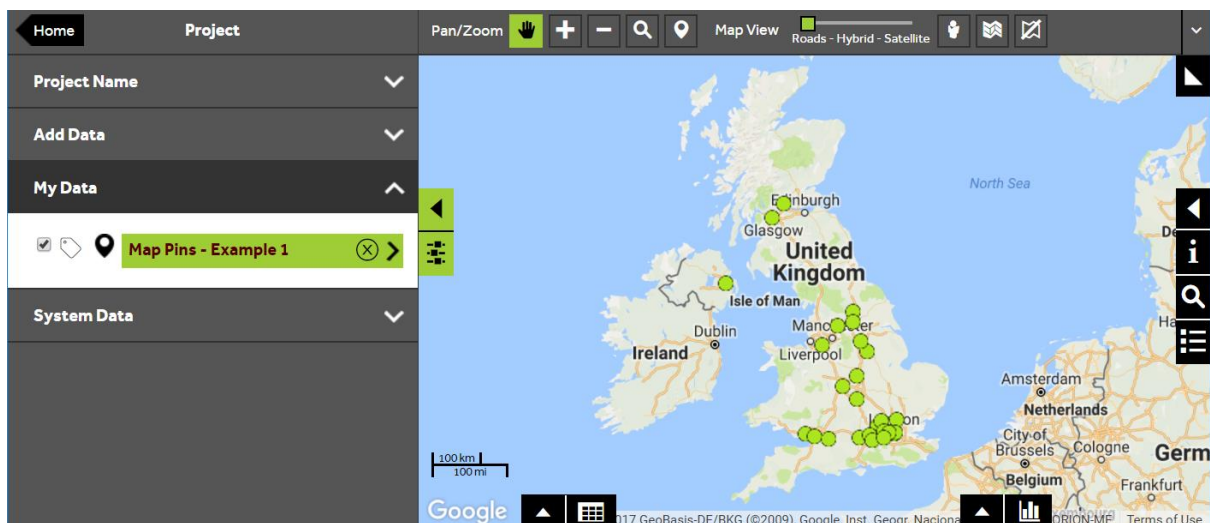
- Map Pins Steps - Create Project
- Map Pins Steps – Import Data



1 of 4

### Style a Map Pins layer

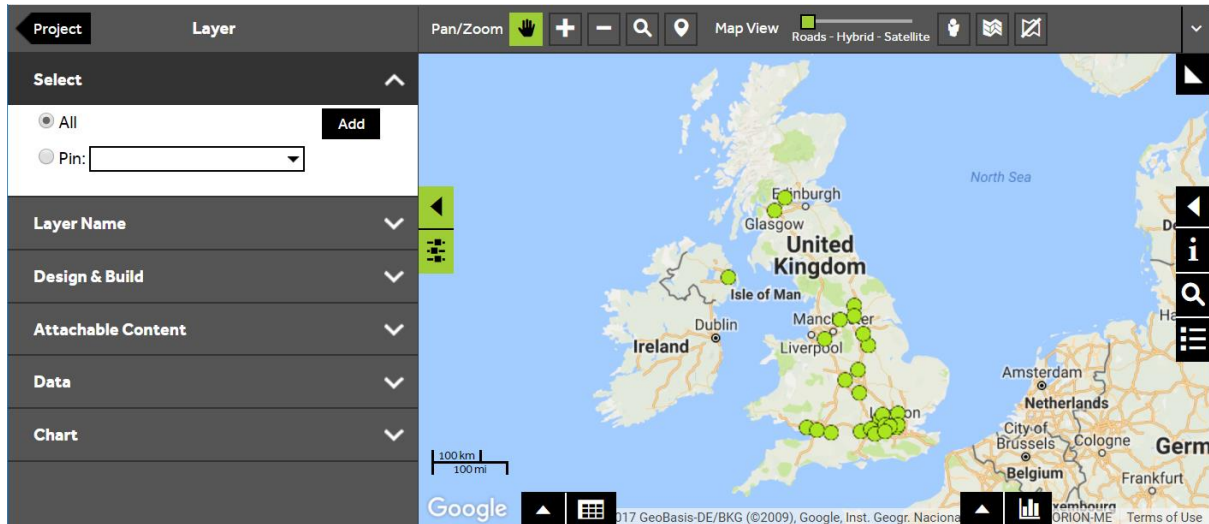
- To style your own data, **Open an existing project** and then select **My Data**, click on the Map Pins layer you wish to style.



2 of 4

## Select Map Pins to update

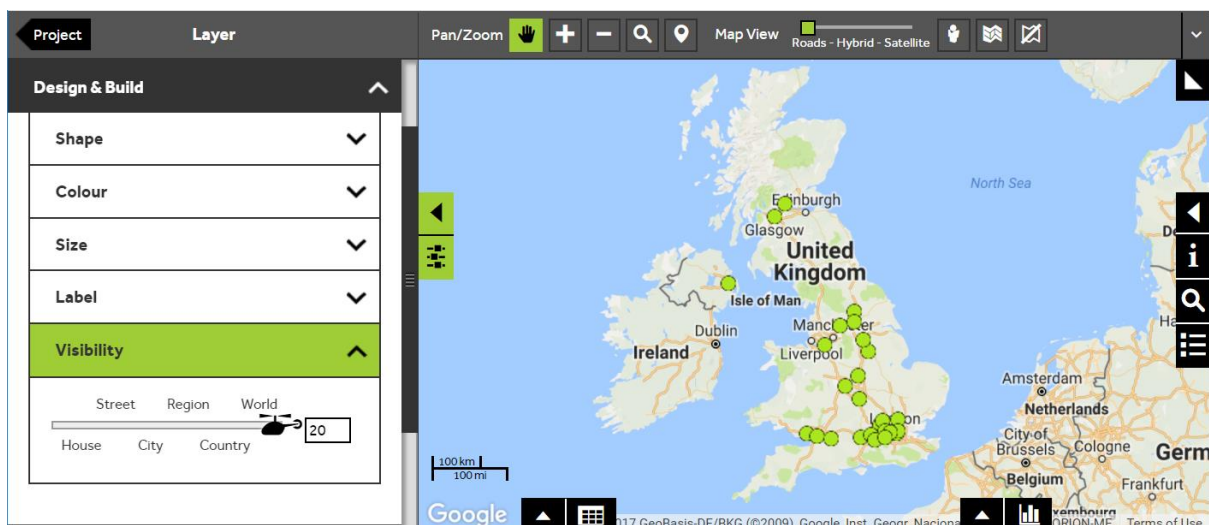
- In the **Select** section of the panel, you can control whether to update all Map Pins in the layer or just a single Map Pin. To update all Map Pins, make sure that the **All** button is selected. To select an individual Map Pin, click on the **Pin** button, then start to type the Map Pin Identifier in the text box and select the required Map Pin from the drop down list.



3 of 4

## Select the visibility panel

- Within the layer editor panel select **Design and Build**, from here you can control how the Map Pins are displayed. Expand the **Visibility** section to control the zoom level at which your Map Pins are displayed.

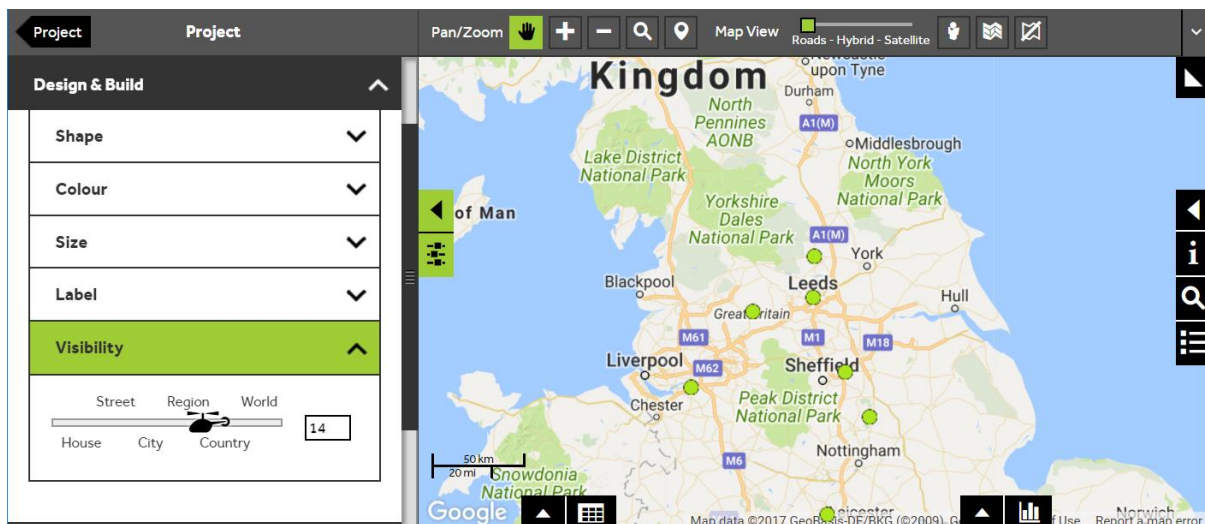


4 of 4

## Select visibility level

- Initially all layers are set to the visibility level **World** which means that the Map Pins in your layer will be visible regardless of the zoom level. To change the maximum visibility level click and drag the slider or type a value between 1 and 20 in the number box. A value of 20 means that the selected Map Pins will be visible at all levels and a value of 1 means that the selected Map Pins will only be displayed at very zoomed in levels.

After changing the visibility level you may find that your Map Pins are no longer visible on the map. To display your Map Pins again, you will need to click on the **Zoom tool** which can be found above the map and zoom into the level that you have setup for your layer.



## What do you want to do next?

You may wish to attach content to your Map Pins such as photos, documents or videos or you may wish to create a report. Please refer to the following sections for further assistance:

- Refer to: **Map Pins Steps – Attach Content**
- Refer to: **Map Pins Steps – Create Output - Report**
- Contact: **Geoplan Support**