

Changing the name of a Map Pins layer

Once you have Map Pins added as a layer to your project you can use the **Map Pins Panel** to control the name and appearance of the layer, as well as the data associated with it. The following instructions will give you a step-by-step guide on how to change the name of a Map Pins layer in SKiN.

Before you begin

Before you start styling your Map Pins, make sure that you have your data set up in a saved project. If you need assistance getting the data into SKiN please refer to the following sections:

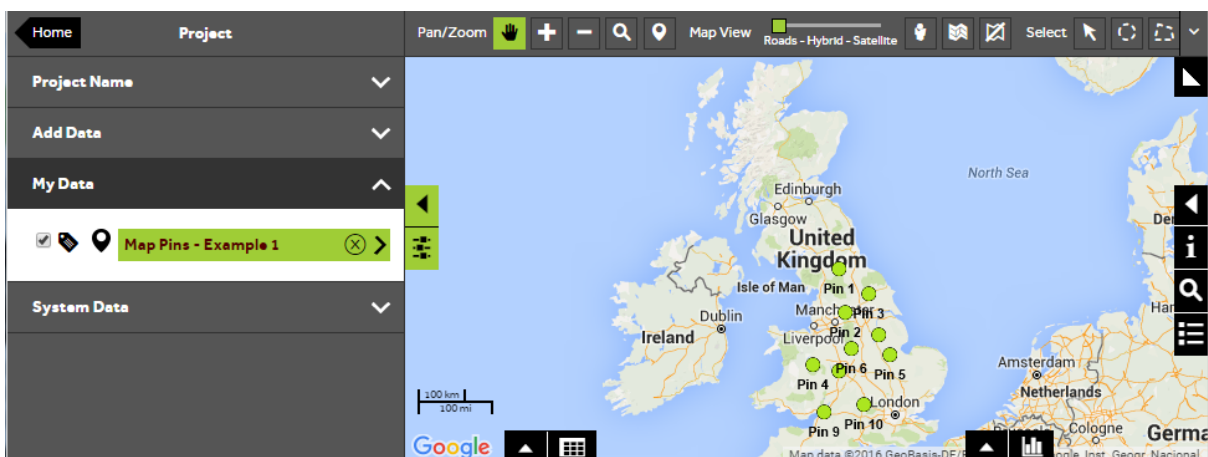
- Map Pins Steps - Create Project
- Map Pins Steps – Import Data



1 of 3

Style a Map Pins layer

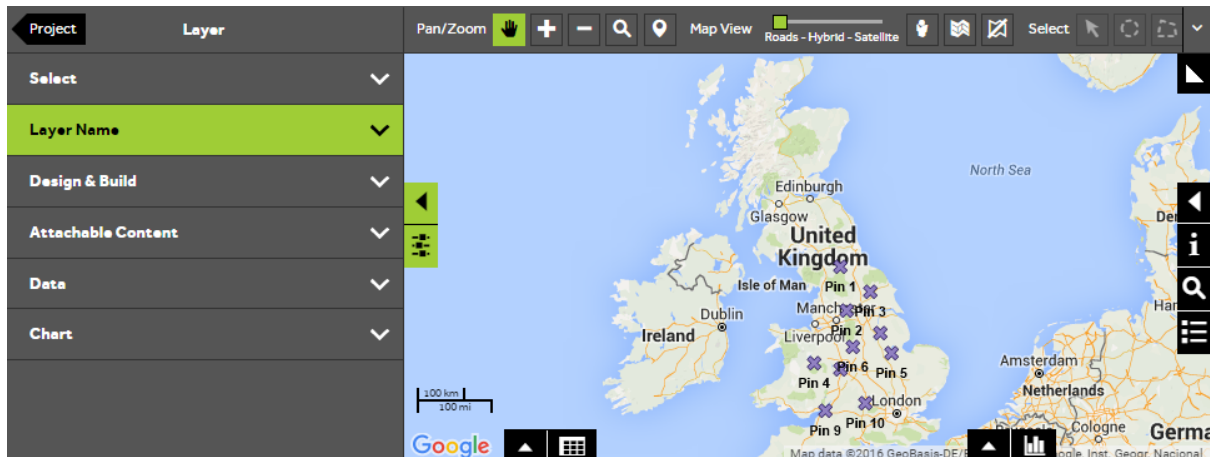
- To style your own data, select **Open an existing project** and then **My Data**, before clicking on the layer you wish to style.



2 of 3

Select the layer name panel

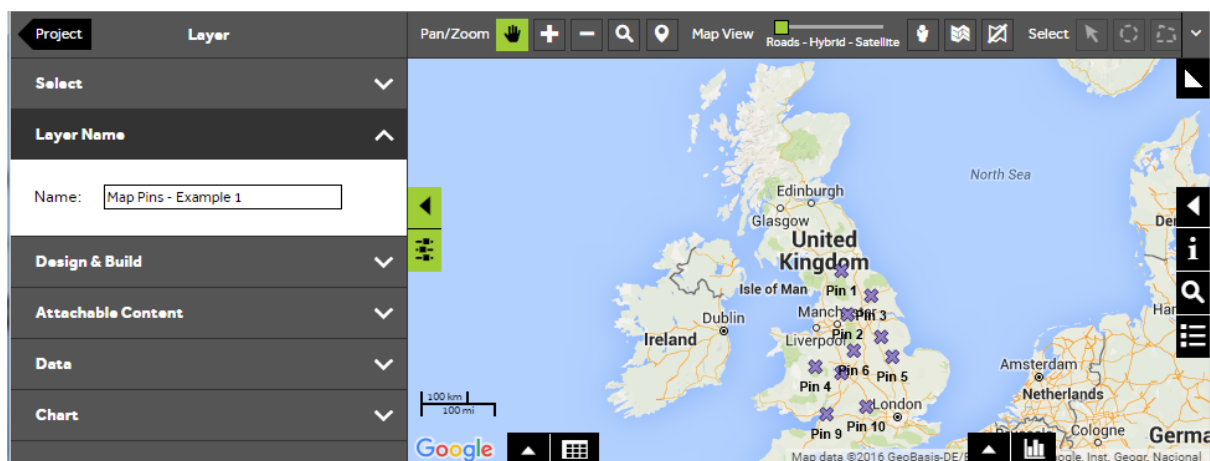
- Within the layer editor panel select **Layer Name** and click with you mouse to expand the panel.



3 of 3

Change the layer name

- To change the layer name type an appropriate name for the layer into the **Name** text box. A tip is to ensure it is short, unique to the layer and descriptive. You are now ready to use the layer.



What do you want to do next?

You may wish to style your Map Pins layer or attach content to your Map Pins. Please refer to the following for further assistance:

- Refer to: **Map Pins Steps – Style Layer - Colour**
- Refer to: **Map Pins Steps – Style Layer – Labels**
- Refer to: **Map Pins Steps – Attach Content**
- Contact: **Geoplan Support**