

## Using the Select tool

The **Select tool** allows you to highlight features on the map and see the data associated with them. The following instructions will give you a step by step guide on how to use the select tool.

### Before you begin

Before you can use the select tool within SKiN, make sure that you have your data set up in a saved project. If you need assistance getting the data into SKiN please refer to the following sections:

- Map Pins Steps - Create Project
- Map Pins Steps – Manually Add Data
- Map Pins Steps – Import Data
- Map Pins Steps - Add Existing Layer



1 of 5

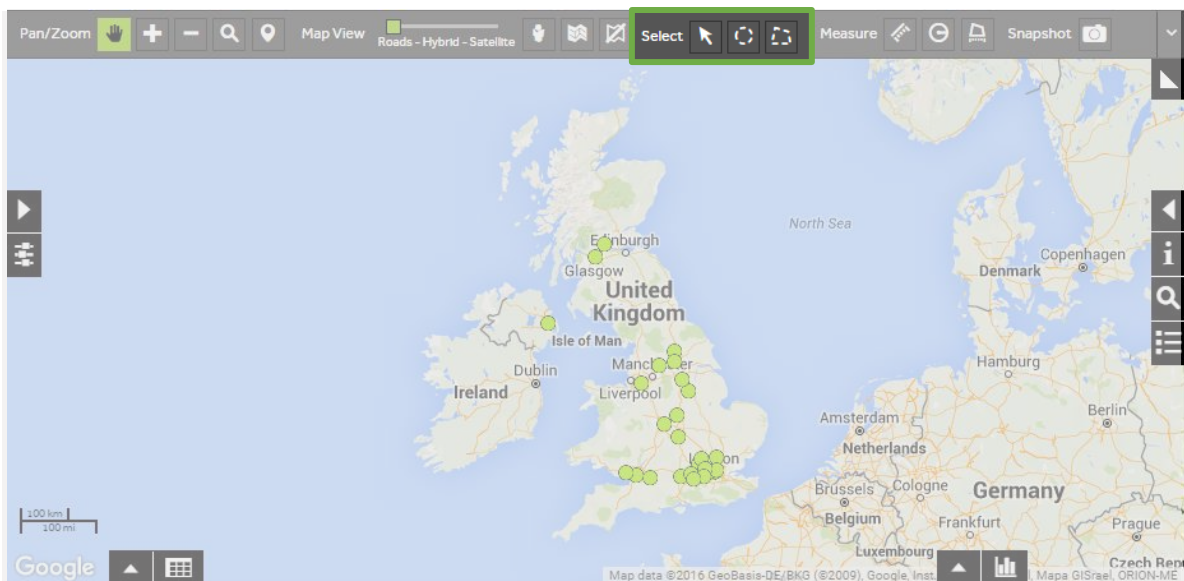
### Access the Select tools

- To access the **Select Tool**, the project editor panel must be open (the tool is not available if the layer editor panel is open). If you are within the layer editor panel, click the **Project** arrow to return to the project editor panel. There are 3 tools that you can use to select data from the map:

**Single Select** – Select a single feature on the map.

**Radial Select** – Click and drag to draw a radius around a set of features.

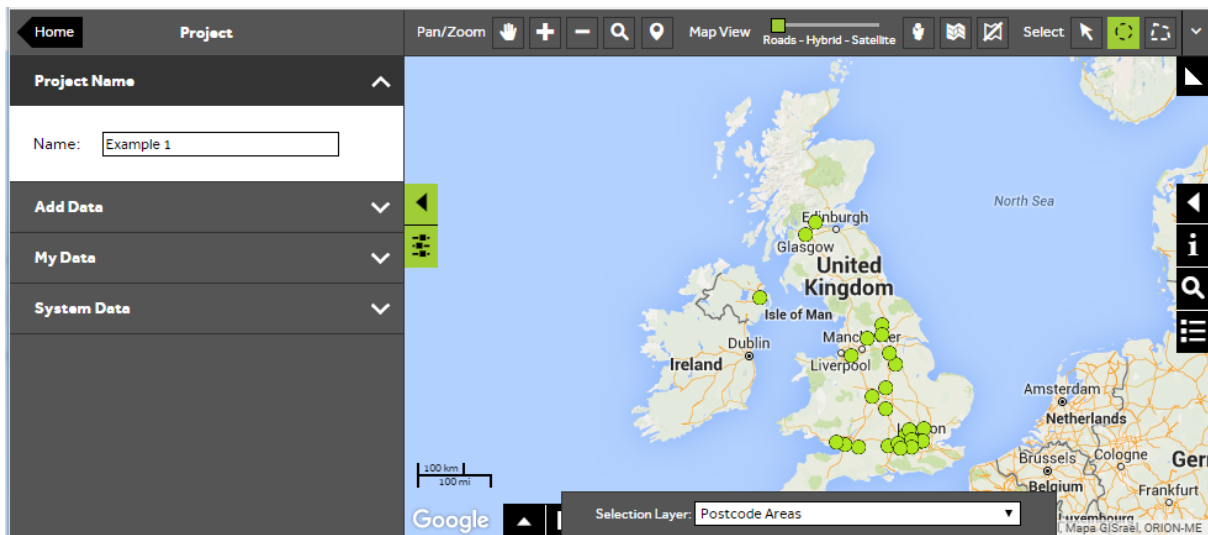
**Area Select** – Click and drag to draw a specific area on the map.



2 of 5

## Choose a Select tool

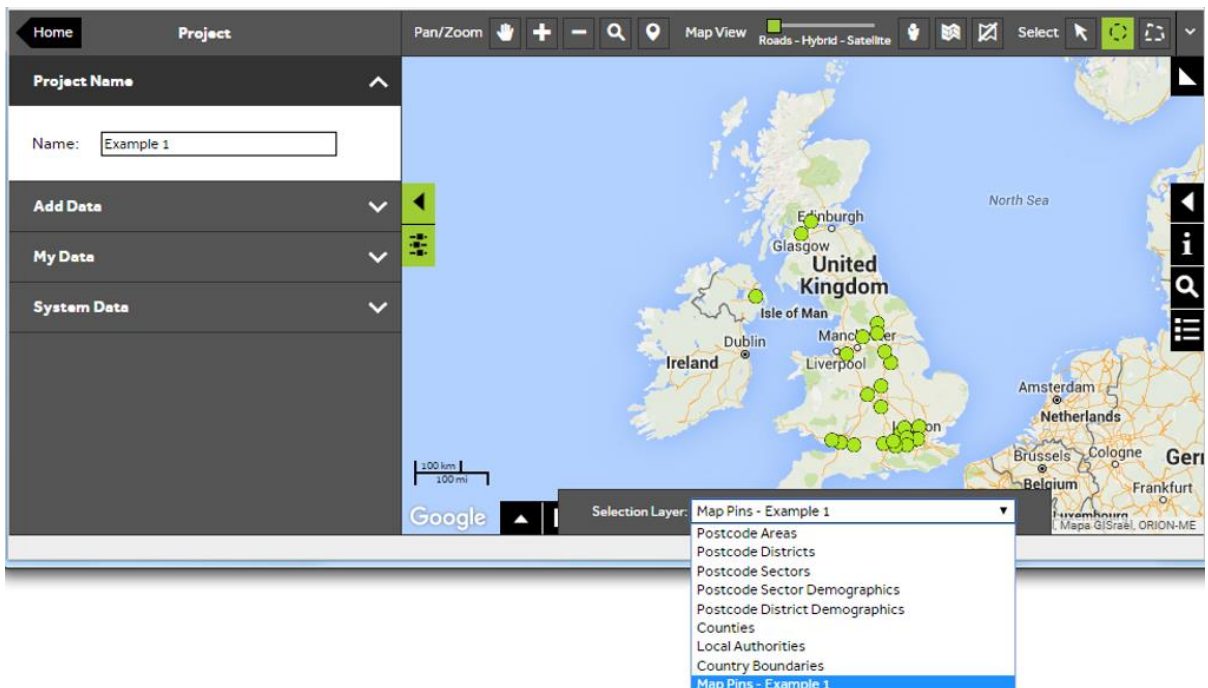
- Click on one of the selection tools such as the **Radius Select** tool. The **Selection Layer** option will display at the bottom of the screen.



3 of 5

## Choose layer to select

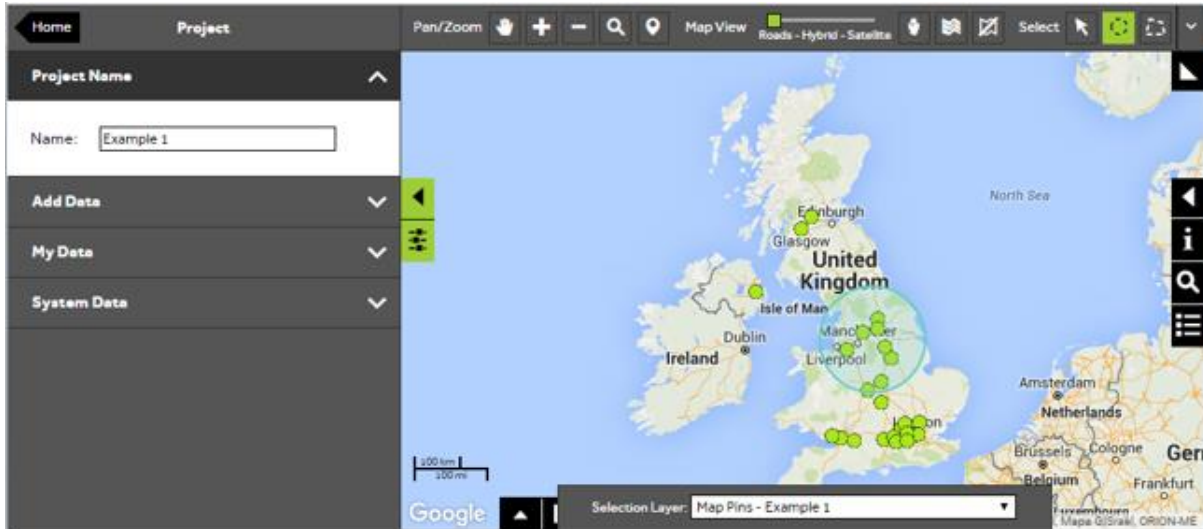
- Use the dropdown from the **Selection Layer** box and select the layer you wish to use. The layer options will be all of the system data layers and any my data layers within the project.



4 of 5

## Draw selection on the map

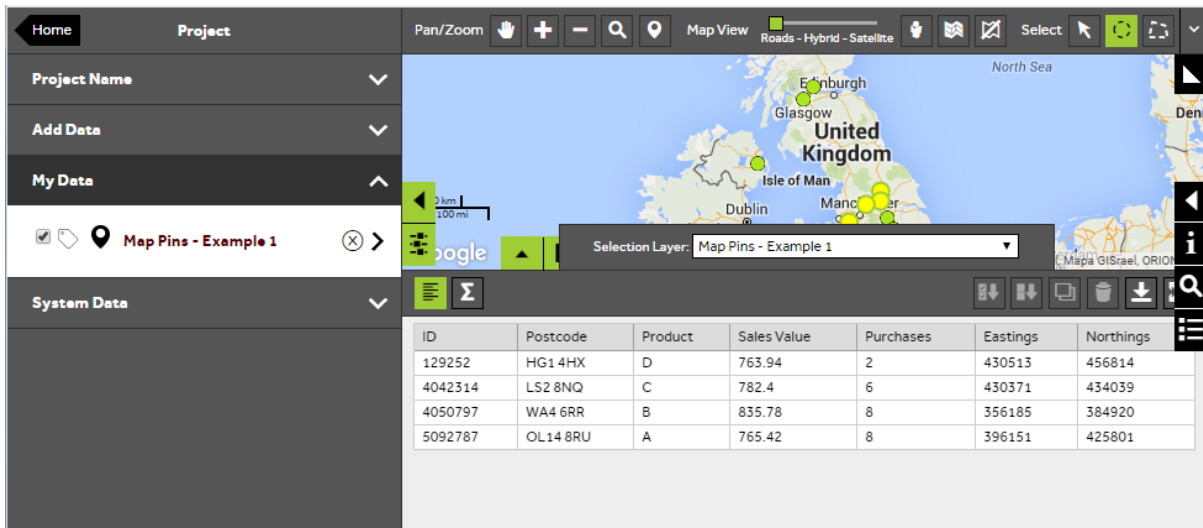
- Once the selection layer has been chosen, draw around the area of interest on the map.



5 of 5

## Open data view to see selected features

- After selecting the area, the data view will automatically open and show the data associated with the selected features.



---

## What would you like to do next?

If you would like further ideas on how to use your data within SKiN please refer to the following sections:

- Watch a video on: **Exporting data**
- Refer to: **Map Pins Steps – Create Output – Report**
- Refer to: **Map Pins Steps – Create Output – Export**
- Contact: **Geoplan Support**