

## Using the Search tool

You can select any layer from your project and also the **Google** search tool from the **Search** option within SKiN. The following instructions will give you a step-by-step guide on how to use the search tool.

### Before you begin

Before you can use the search option within SKiN, you may wish to have your data set up in a saved project. If you need assistance getting the data into SKiN please refer to the following sections:

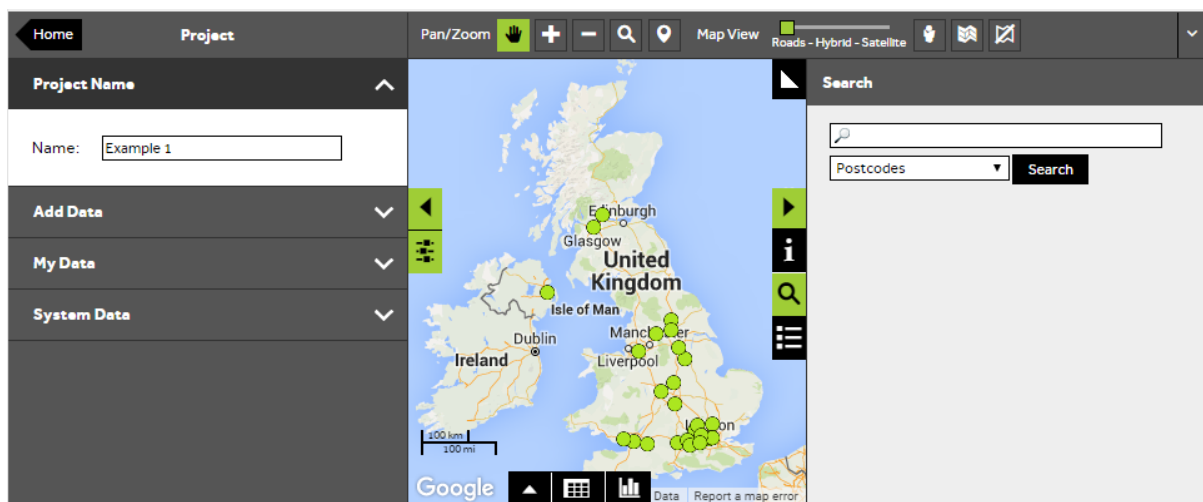
- Map Pins Steps - Create Project
- Map Pins Steps - Import Data



1 of 4

### Open the Search tool

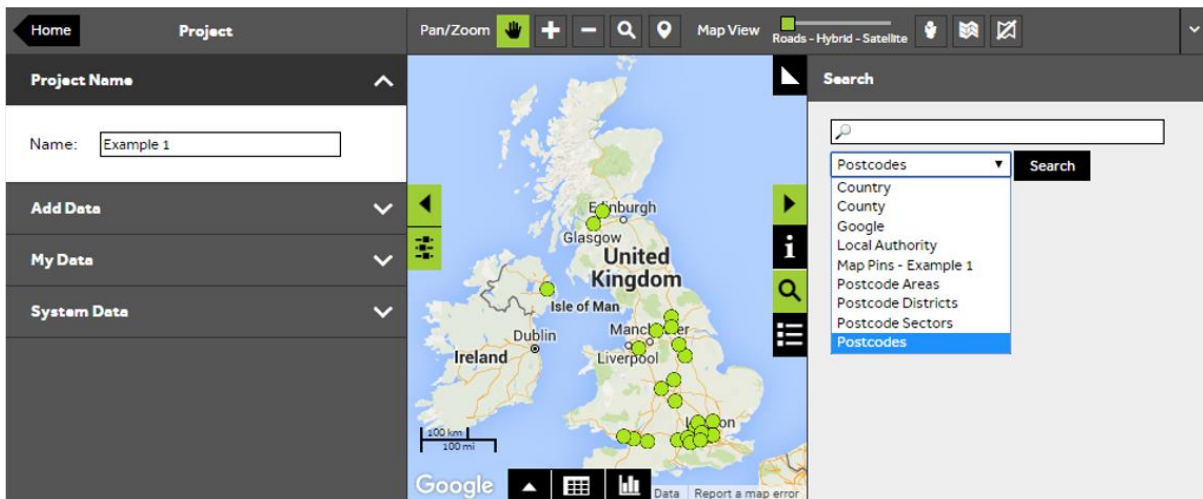
- To search for a place on the map, **Open an existing project** and then select the **Search tool** to the right of the map.



2 of 4

## Choose the type of search

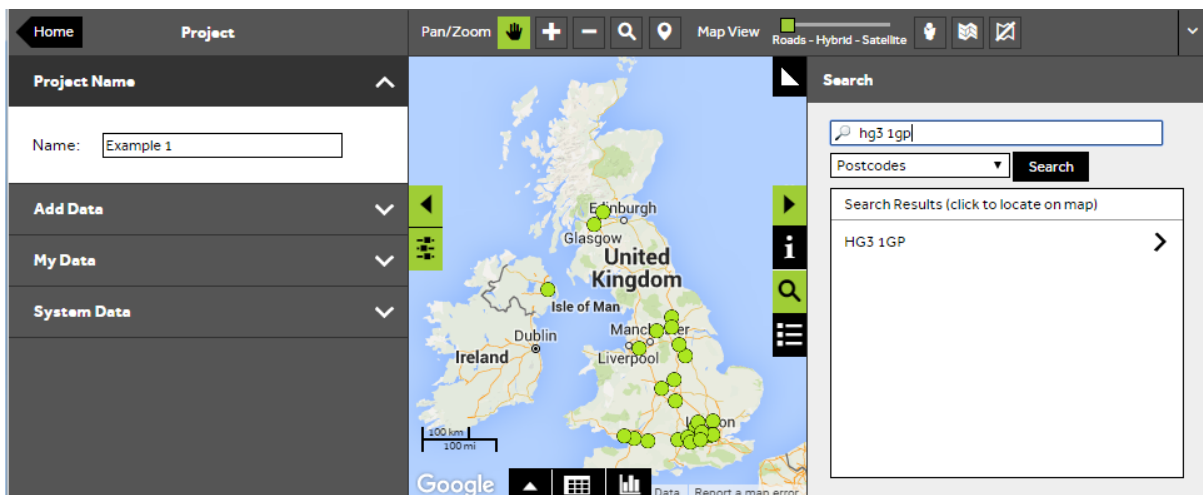
- From the **Search** panel, you can select any layer from your project, system data layers and also access the **Google** search tool from the dropdown box.



3 of 4

## Perform your search

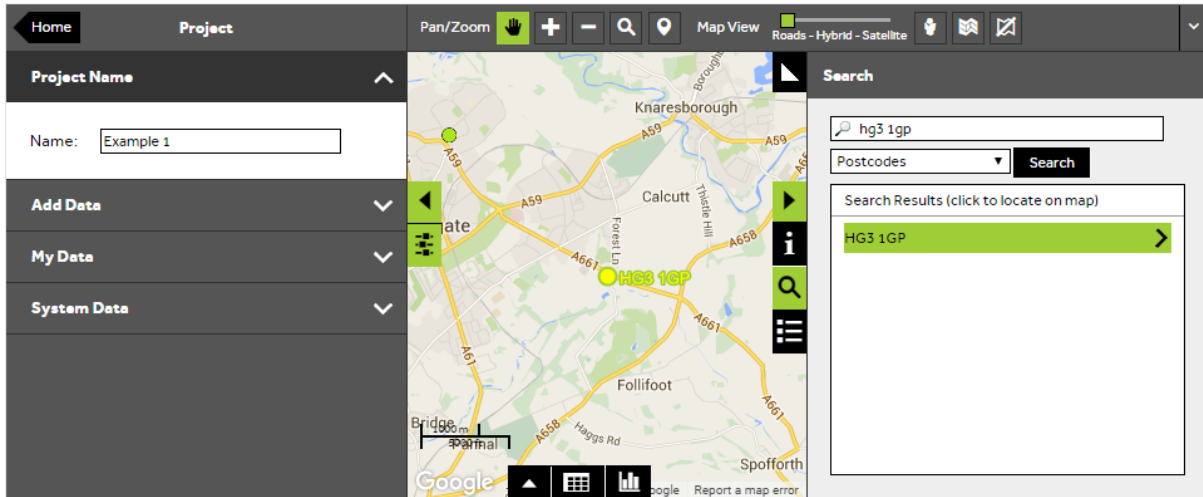
- To perform a search, select from the list what type of search you wish to perform and then type into the search box. Click **Search** to return a list of matching locations.



4 of 4

## Jump to the location on the map

- Once the search has been performed and the list of options are displayed in the search panel, select the feature in the **Search Results** in order to jump to the location on the map. The map will update and highlight the location on the map.



## What do you want to do next?

You may wish to change the label, size or colour of the pins based on a particular category within your data. Please refer to the following sections for further assistance:

- Refer to : **Map Pins Steps – Style Layer - Colour**
- Refer to : **Map Pins Steps – Style Layer - Size**
- Refer to : **Map Pins Steps – Style Layer - Label**
- Contact: **Geoplan Support**