

## Using the Info tool

The **Info tool** can be accessed by clicking the **i** button to open the **Info Panel**. The following instructions will give you a step-by-step guide on how to use the info tool.

### Before you begin

Before you can use the Info tool within SKiN, make sure that you have your data set up in a saved project. If you need assistance getting the data into SKiN please refer to the following sections:

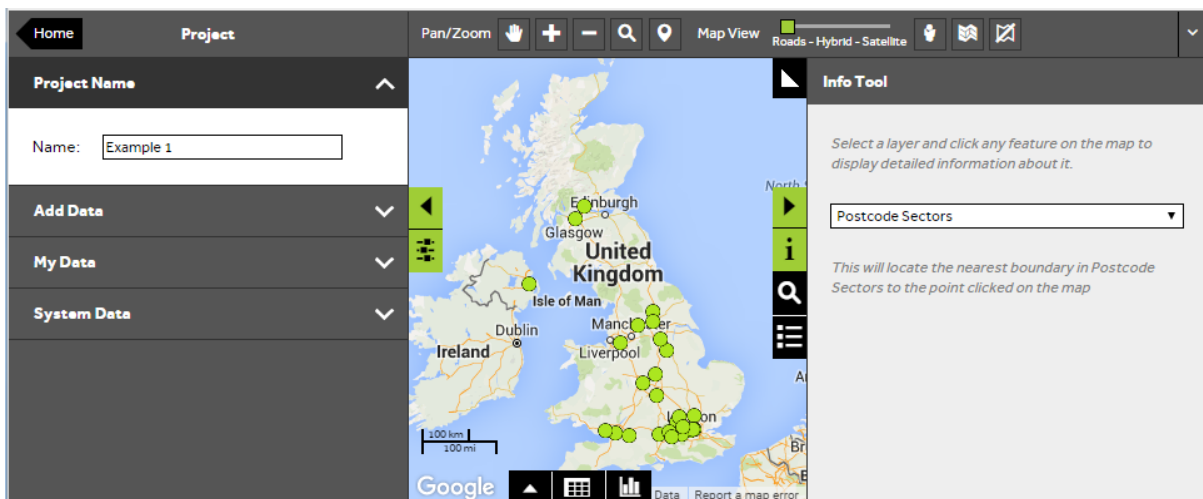
- Map Pins Steps - Create Project
- Map Pins Steps - Import Data



1 of 3

### Open the Info tool

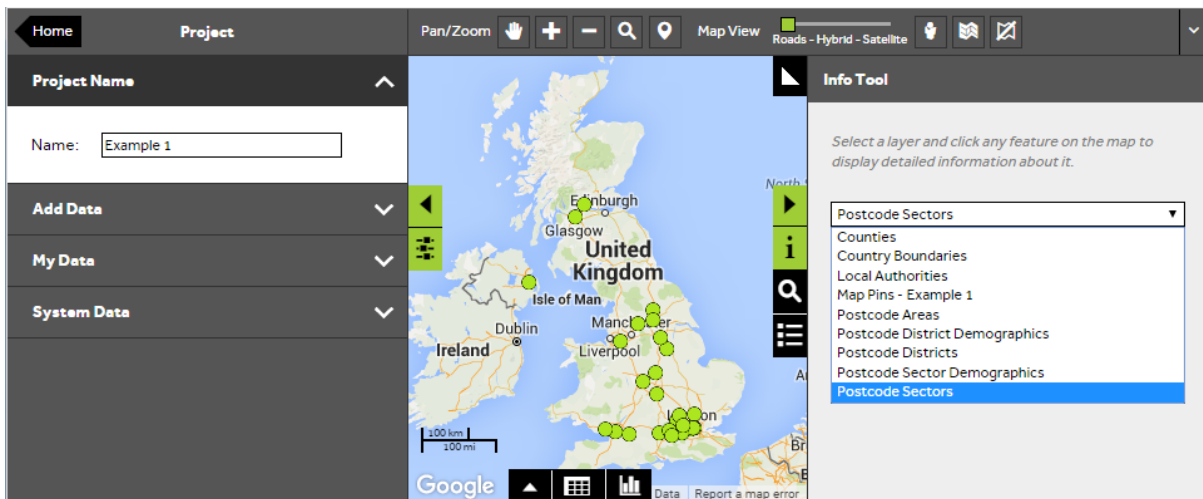
- To find information about Map Pins on the map, **Open an existing project** and then select the **Info Tool [i]** to the right of the map. The info panel will appear.



2 of 3

## Select the layer

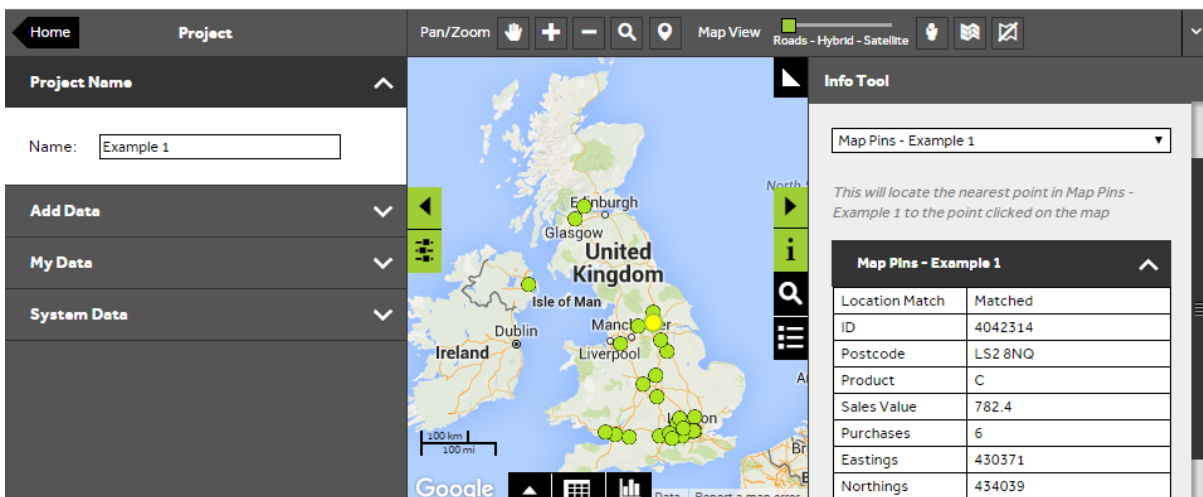
- From the **Info panel**, you can select any My Data or System Data layer from your project using the info tool dropdown box. Select the layer you would like to interrogate from the list.



3 of 3

## Select a feature on the map

- Click on a feature on the map within the layer you have selected, to reveal the details associated with it.



---

## What do you want to do next?

You may wish to change the label, size or colour of the Map Pins based on a particular category within your data. Please refer to the following sections for further assistance:

- Refer to : **Map Pins Steps – Style Layer - Labels**
- Refer to : **Map Pins Steps – Style Layer - Size**
- Refer to : **Map Pins Steps – Style Layer – Colour**
- Contact: **Geoplan Support**