

## Editing Map Pins data

Once you have Map Pins added as a layer to your project you can use the **Map Pins Panel** to control the appearance of the layer, as well as the data associated with it. The following instructions will give you a step by step guide on how to edit data within SKiN.

### Before you begin

Before you start editing data associated with your Map Pins, make sure that you have your data set up in a saved project. If you need assistance getting the data into SKiN please refer to the following sections:

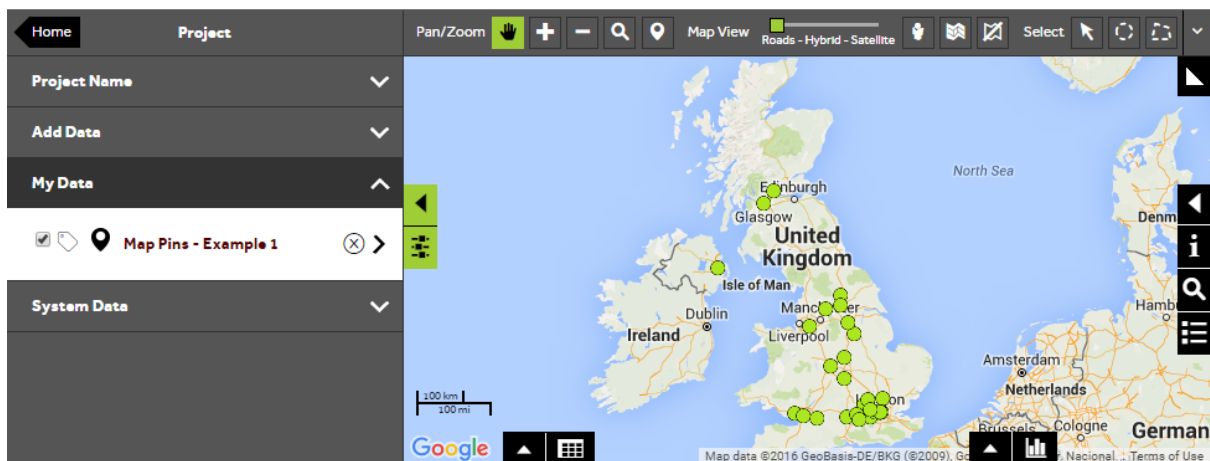
- Map Pins Steps - Create Project
- Map Pins Steps – Import Data



1 of 5

### Select a Map Pins layer

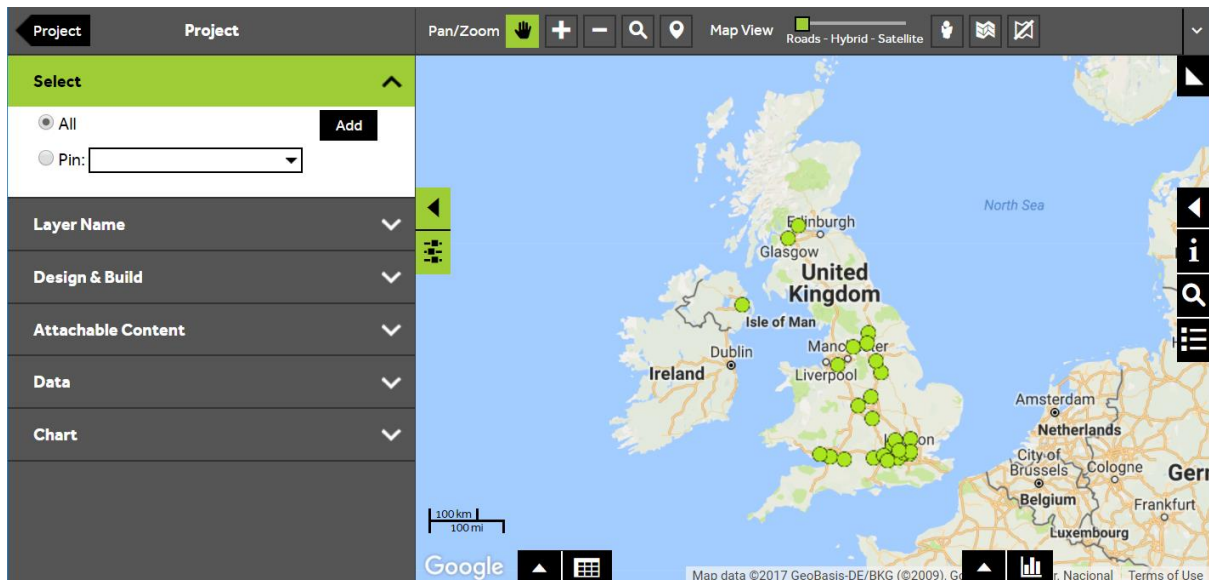
- To edit your own data, **Open an existing project** and then select **My Data**. Click on the layer you wish to change.



2 of 5

## Select all Map Pins

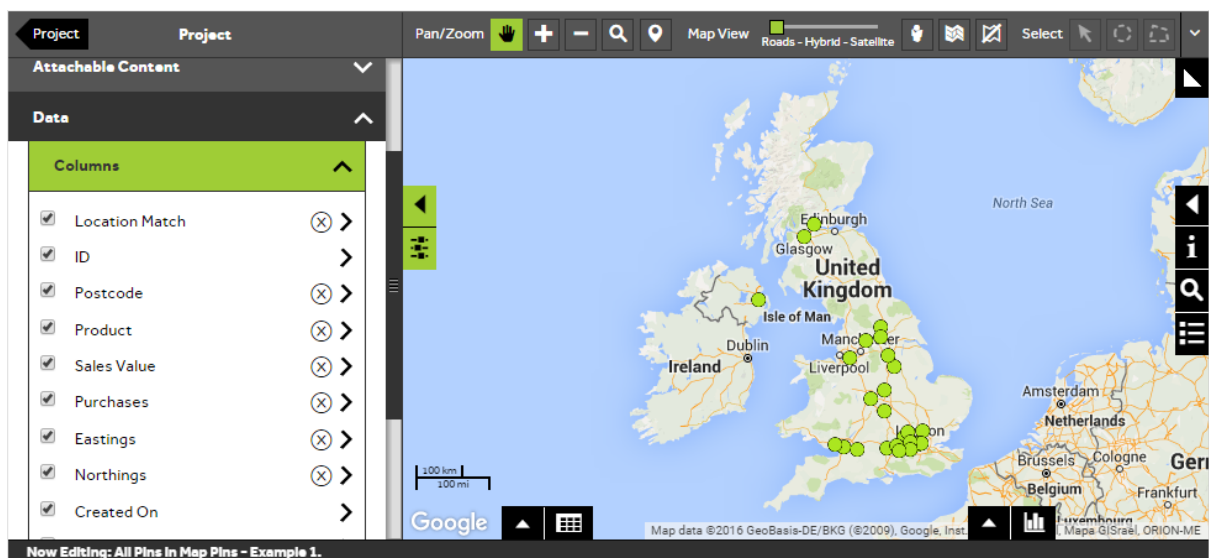
- To edit data columns you need to firstly make sure that all Map Pins are selected. Open the **Select** section of the panel and click on the **All** button if this is not currently selected.



3 of 5

## Select the columns panel

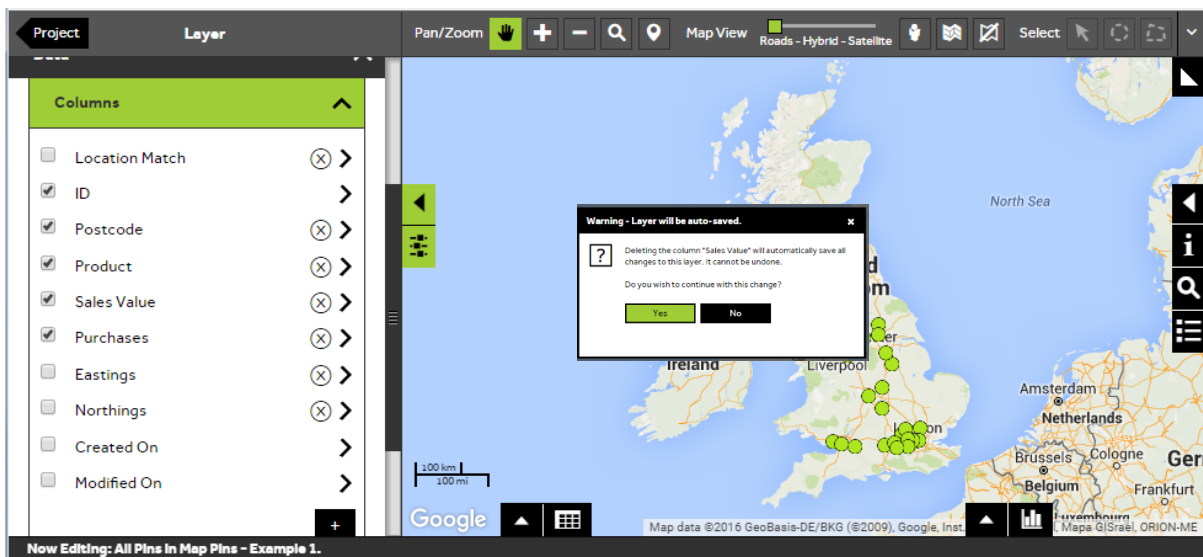
- Within the layer editor panel select **Data**. From here you can control the data associated with your Map Pins. Click to expand the **Columns** selection panel.



4 of 5

## Change which columns are displayed

- You can control the columns that are displayed in the **Data View** by ticking/un-ticking the boxes next to each column name.
- You can delete a column by clicking the **X**. A message will be displayed warning you that the layer will automatically be saved if you make this change, select **Yes** when asked 'Do you wish to continue with this change?'. Some columns, like the **ID**, cannot be deleted.
- You can add a column by clicking the **+** button found at the bottom right of the **Columns** panel.



Now Editing: All Pins In Map Pins - Example 1.

5 of 5

## Edit the data column

- To edit a column, click on the column name and select **Yes** when asked 'Do you wish to continue with this change?'. The panel will update to show the **Column Configuration Panel**. You can change the name of the column by clicking in the **name** box and typing.
- You can change the **Data Type** of the column by selecting from the dropdown box.
- For numeric columns, you can set the data **Format**, e.g. the number of decimal places or special formats such as time or date.
- You can also populate a column using an **Expression** to automatically generate the values. You can select an **expression type** from the first dropdown box and then use the other dropdown boxes to build or edit your calculation. For more information, refer to Map Pins Steps - Calculate New Column. Click **Calculate** to update the expression.

TIP: To look at the updated data column, open the **Data View** by clicking on the data grid icon (bottom left of map).

The screenshot shows the software interface with a map of the United Kingdom and Ireland. On the left, the 'Layer' panel is open to 'Project' mode, showing the 'Expression' configuration for a column. The configuration includes a dropdown for 'Simple Calculations', a field for 'Sales Value', a multiplication operator '\*', and a 'Direct Value' of 2.5. A 'Calculate' button is visible below the configuration.

At the bottom of the interface, a data table is displayed with the following columns: #, ID, Postcode, Product, Sales Value, Purchases, and Example Calculation. The table contains five rows of data, each with an 'Edit' link in the first column.

#	ID	Postcode	Product	Sales Value	Purchases	Example Calculation
<a href="#">Edit</a>	1006580	BT6 9HR	C	897.88	9	2244.70
<a href="#">Edit</a>	1007277	HP15 6QG	C	264.46	3	661.15
<a href="#">Edit</a>	1063870	W6 9RJ	C	433.96	8	1084.90
<a href="#">Edit</a>	1135287	SG13 7NN	C	145.88	4	364.70
<a href="#">Edit</a>	129252	HG1 4HX	D	763.94	2	1909.85

Page 1 of 6 (30 items)

Now Editing: All Pins in Map Pins - Example 1.

---

## What do you want to do next?

You may wish to change the label, size or colour the pins based on a particular category within your data. Please refer to the following sections for further assistance:

- Refer to : **Map Pins Steps – Style Layer - Labels**
- Refer to : **Map Pins Steps – Style Layer - Size**
- Refer to : **Map Pins Steps – Style Layer – Colour – Data Based Styling**
- Contact: **Geoplan Support**