

Creating a project

To start mapping you will need to create a project or open a project that you have created previously within SKiN.

A project is used to group together a collection of map layers that have been put together in order to fulfil a specific objective. The following instructions are a step-by-step guide showing how to create a new project, name the project and save it so that it is ready to add layers to and is available for future use.

Before you begin

Before you create a project in SKiN you may like to see an overview of how the SKiN system works. Please refer to the following section:

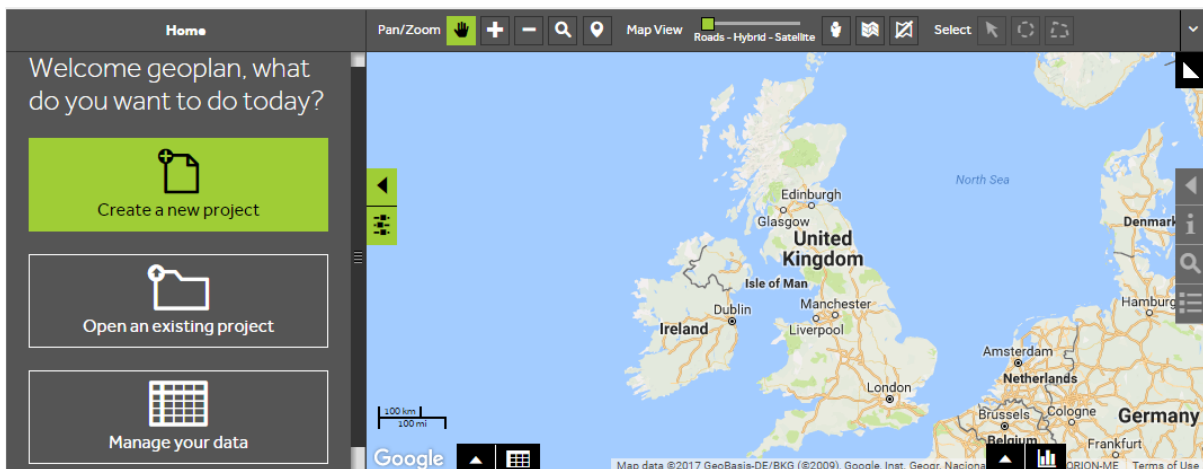
- SKiN System Overview



1 of 3

Create a new project

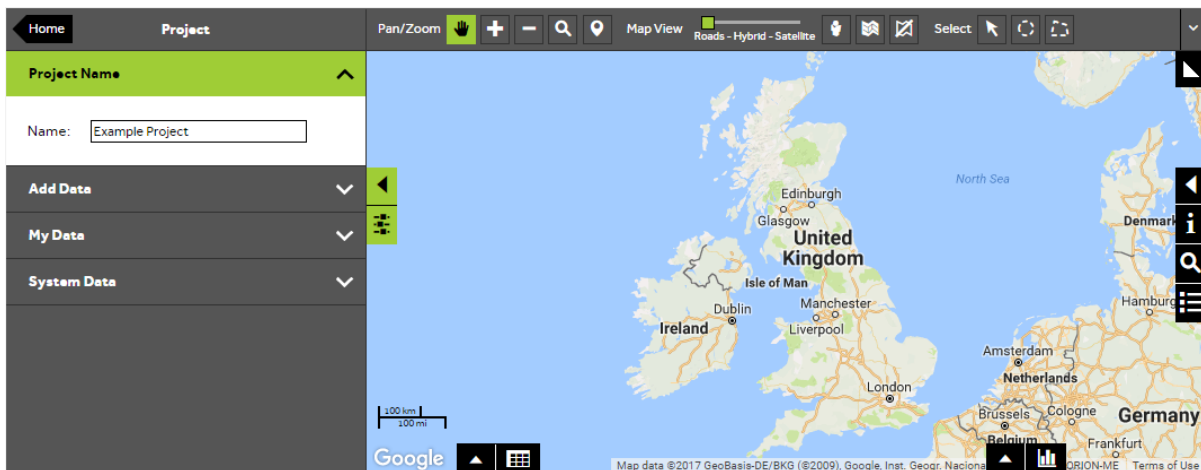
- Login to SKiN using your **username** and **password** and click on **Create a new project**.



2 of 3

Name your project

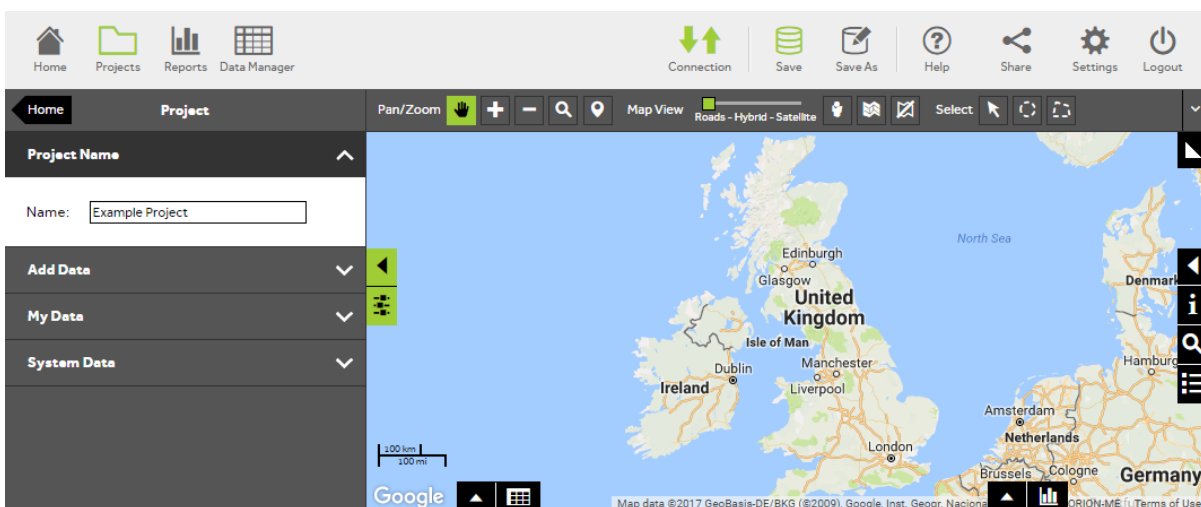
- To name your project enter a name in the text box of the **Project Name** section. Choose a name that is relevant to the specific objective of the project.



3 of 3

Save your project

- To save your project click on the **Save** button above the toolbar. This will save your project with the project name you entered, along with any layers you may have added, so that it can be reopened as an **Existing Project** for future use. It is important to save your project at regular intervals as you add layers and make changes to the project.



What do you want to do next?

You may wish to add your own data as Map Pins on the map or add a layer that has been created previously. Please refer to the following sections for further assistance:

- Refer to: **Map Pins Steps – Import Data**
- Refer to: **Map Pins Steps – Manually Add Data**
- Refer to: **Map Pins Steps - Add Existing Layer**
- Contact: **Geoplan Support**