

## Exporting Map Pins data to a file

Once you have Map Pins added as a layer to your project you can use the **Map Pins Panel** to control the appearance of the layer, as well as the data associated with it. The following instructions will give you a step-by-step guide on how to export Map Pins and associated data from within SKiN to Excel.

### Before you begin

Before you start exporting data associated with your Map Pins, make sure that you have your data set up in a saved project. If you need assistance getting the data into SKiN please refer to the following sections:

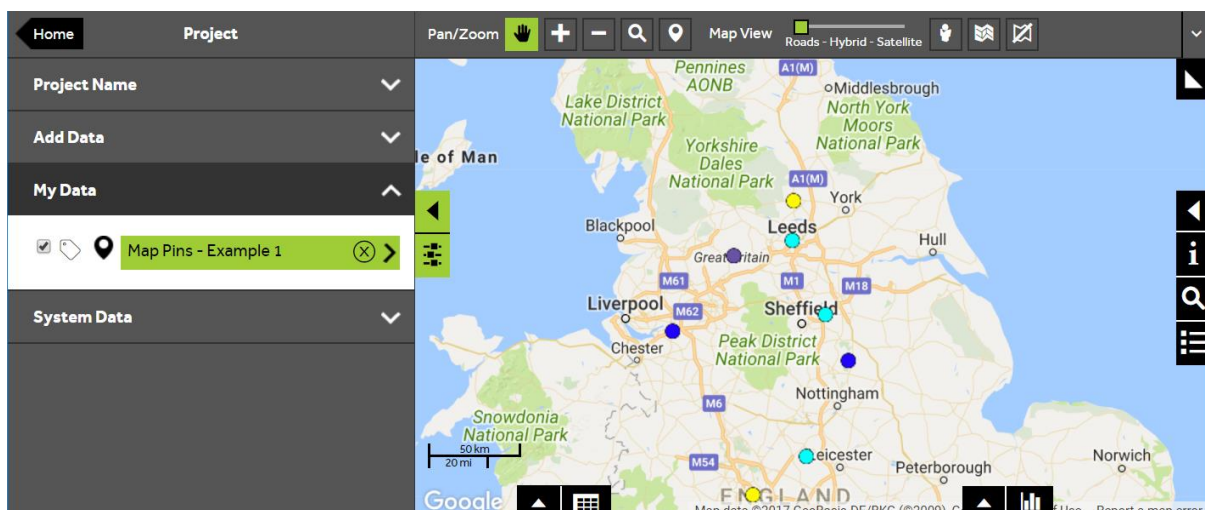
- Map Pins Steps - Create Project
- Map Pins Steps – Import Data



1 of 5

### Open the Map Pins layer

- To export Map Pins data from your own layer, **Open an existing project** and then select **My Data**. Click on the layer you wish to export.



2 of 5

## Open the data view

- Within the layer editor panel click on the data grid button to open the **Data View**.

#	ID	Postcode	Product	Sales Value	Purchases	Eastings	Northings	Created On
<a href="#">Edit</a>	Pin 1	BT6 9HR	C	897.88	9	148547	527206	2016/09/08 10:14:55 AI
<a href="#">Edit</a>	Pin 2	HP15 6QG	C	264.46	3	490400	196700	2016/09/08 10:14:55 AI
<a href="#">Edit</a>	Pin 3	W6 9RJ	C	433.96	8	523110	178108	2016/09/08 10:14:55 AI
<a href="#">Edit</a>	Pin 4	SG13 7NN	C	145.88	4	533789	212409	2016/09/08 10:14:55 AI
<a href="#">Edit</a>	Pin 5	HG1 4HX	D	763.94	2	430513	456814	2016/09/08 10:14:55 AI

3 of 5

## Export the Map Pins data

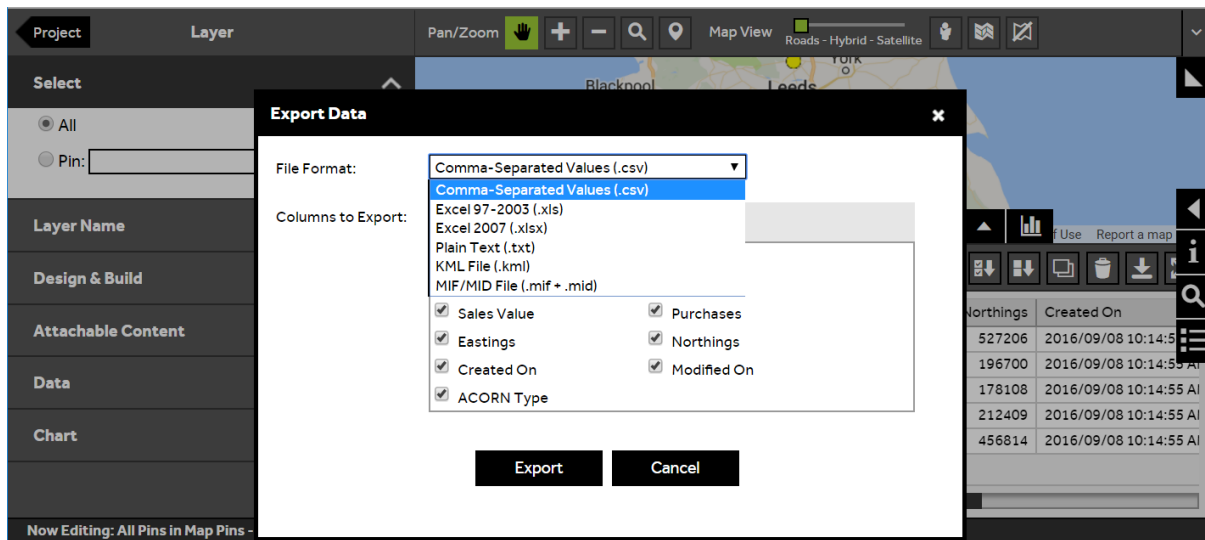
- To open the **Export Data** window, click on the **Export** button which can be found on the right hand side at the top of the data view.

#	ID	Postcode	Product	Sales Value	Purchases	Eastings	Northings	Created On
<a href="#">Edit</a>	Pin 1	BT6 9HR	C	897.88	9	148547	527206	2016/09/08 10:14:55 AI
<a href="#">Edit</a>	Pin 2	HP15 6QG	C	264.46	3	490400	196700	2016/09/08 10:14:55 AI
<a href="#">Edit</a>	Pin 3	W6 9RJ	C	433.96	8	523110	178108	2016/09/08 10:14:55 AI
<a href="#">Edit</a>	Pin 4	SG13 7NN	C	145.88	4	533789	212409	2016/09/08 10:14:55 AI
<a href="#">Edit</a>	Pin 5	HG1 4HX	D	763.94	2	430513	456814	2016/09/08 10:14:55 AI

4 of 5

## Select the file format

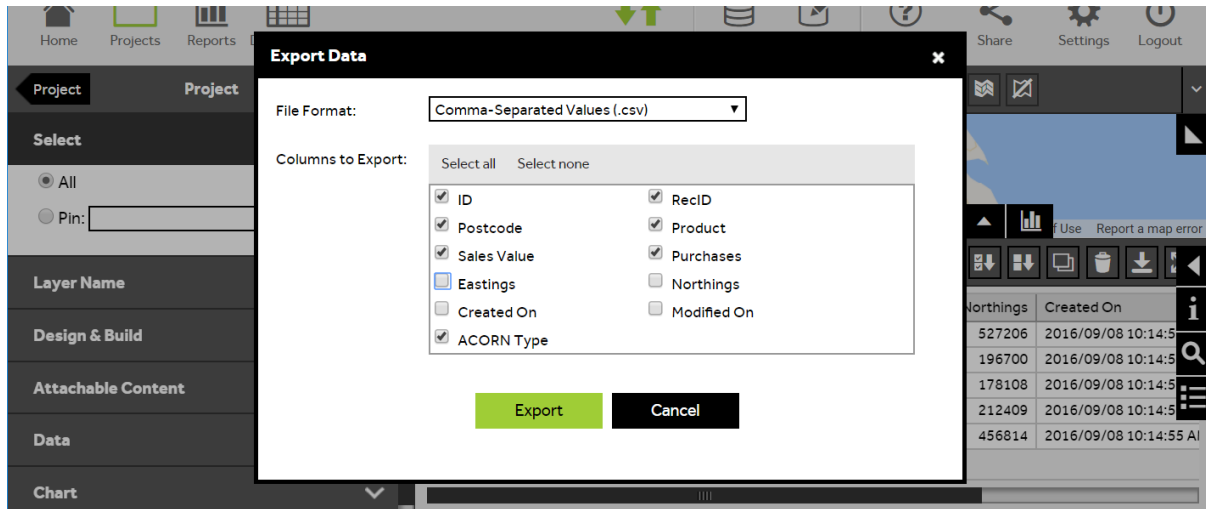
- You can change the **File Format** by clicking in the dropdown box and selecting the format that you would like to create.



5 of 5

## Choose which columns to export

- You can choose the columns to include in your export by unticking / ticking the column names in the **Columns to Export** box. You can also choose to **Select all** or **Select None**. Press the **Export** button to create your exported Map Pins file.



## What do you want to do next?

You may wish to print a map of your Map Pins or create a report. Please refer to the following sections for further assistance:

- Refer to : **Map Pins Steps – Create Output - Report**
- Refer to : **Map Pins Steps – Create Output – Print (OSM)**
- Refer to : **Map Pins Steps – Create Output – Print (Google)**
- Contact: **Geoplan Support**