

Copying Map Pin records to another layer

Data can be copied and pasted into other layers from within the **Data View**. The following instructions will give you a step by step guide on how to edit data within SKiN.

Before you begin

Before you start editing data associated with your map pins make sure that you have the data set up in a saved project. If you need assistance getting the data into SKiN please refer to the following sections:

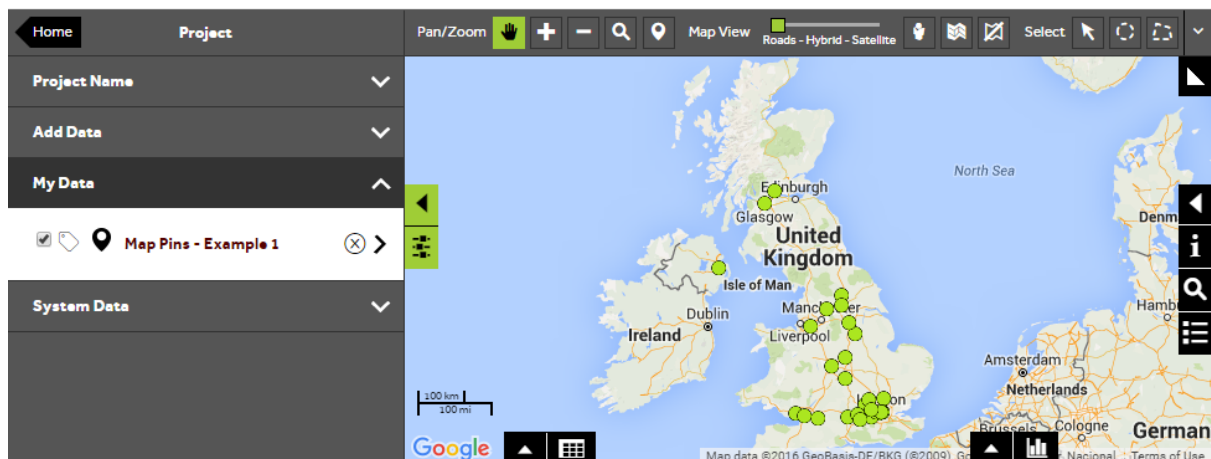
- Map Pins Steps – Create Project
- Map Pins Steps – Import Data



1 of 5

Select Map Pins layer

- To copy data from one layer to another, **Open an existing project** and then **My Data**, click on the layer you wish to change.



2 of 5

Open the data grid

- Expand the **data grid** from the bottom of the map, so that you can see that data that you wish to copy.

#	ID	Postcode	Product	Sales Value	Purchases	Example Calculation
Edit <input type="checkbox"/>	1006580	BT6 9HR	C	897.88	9	2244.70
Edit <input type="checkbox"/>	1007277	HP15 6QG	C	264.46	3	661.15
Edit <input type="checkbox"/>	1063870	W6 9RJ	C	433.96	8	1084.90
Edit <input type="checkbox"/>	1135287	SG13 7NN	C	145.88	4	364.70
Edit <input type="checkbox"/>	129252	HG1 4HX	D	763.94	2	1909.85

Page 1 of 6 (30 items) < 1 2 3 4 5 6 >

3 of 5

Select and copy records

- Select all of the rows that you want to copy using the **tick boxes** in each row. Alternatively you can use the buttons to the right of the data grid panel to select all or none using the **de/select all** buttons. When you have selected the rows you want to copy, click the **copy** button within the data grid.

#	ID	Postcode	Product	Sales Value	Purchases	Example Calculation
Edit <input checked="" type="checkbox"/>	1006580	BT6 9HR	C	897.88	9	2244.70
Edit <input checked="" type="checkbox"/>	1007277	HP15 6QG	C	264.46	3	661.15
Edit <input checked="" type="checkbox"/>	1063870	W6 9RJ	C	433.96	8	1084.90
Edit <input checked="" type="checkbox"/>	1135287	SG13 7NN	C	145.88	4	364.70
Edit <input type="checkbox"/>	129252	HG1 4HX	D	763.94	2	1909.85

Page 1 of 6 (30 items) < 1 2 3 4 5 6 >

4 of 5

Select target layer

- Once you have clicked the **copy layer** button you can then choose the target layer to copy the records to. Choose from the target layer drop down, then click the **tick** to confirm the action.

#	ID	Postcode	Product	Sales Value	Purchases	Example Calculation
<input type="checkbox"/> Edit	1006580	BT6 9HR	C	897.88	9	2244.70
<input checked="" type="checkbox"/> Edit	1007277	HP15 6QG	C	264.46	3	661.15
<input checked="" type="checkbox"/> Edit	1063870	W6 9RJ	C	433.96	8	1084.90
<input checked="" type="checkbox"/> Edit	1135287	SG13 7NN	C	145.88	4	364.70
<input type="checkbox"/> Edit	129252	HG1 4HX	D	763.94	2	1909.85

5 of 5

Save and Copy

- Once you have clicked **Confirm**, you will be presented with a notification box. Click **Save & Copy** to complete the process. You will now have a new layer with your copied records and associated map pins in.

What do you want to do next?

You may wish to change the label, size or colour of the pins based on a particular category within your data, please refer to the following sections for further assistance:

- Refer to : **Map Pins Steps – Style Layer - Labels**
- Refer to : **Map Pins Steps – Style Layer - Size**
- Refer to : **Map Pins Steps – Style Layer – Colour – Data Based Styling**
- Contact: **Geoplan Support**