

Changing the visibility level of Hot-Spots

Once you have Hot-Spots added as a layer to your project you can use the **Hot-Spot Panel** to control the appearance of the layer, as well as the data associated with it. The following instructions will give you a step by step guide on how to specify at what point your Hot-Spot areas are displayed as you zoom in and out of the map. This is useful for large or detailed data sets that are not easy to interpret until you zoom in.

Before you begin

Before you start styling your Hot-Spots, make sure that you have the data set up in a saved project. If you need assistance getting the data into SKiN please refer to the following sections:

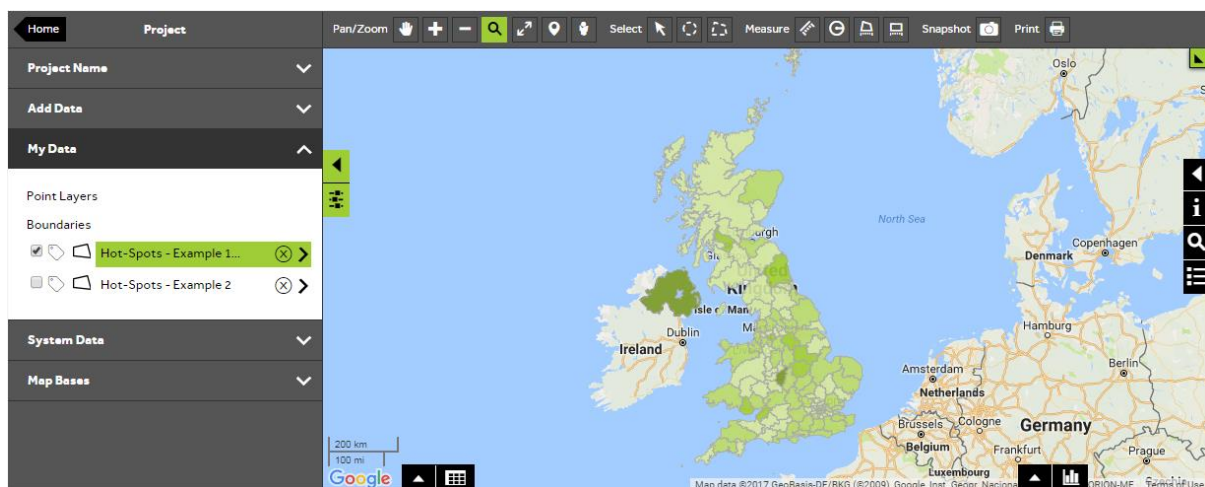
- Hot-Spot Steps - Create Project
- Hot-Spot Steps - Import Data
- Hot-Spot Steps - Add Existing Layer



1 of 3

Style a Hot-Spots layer

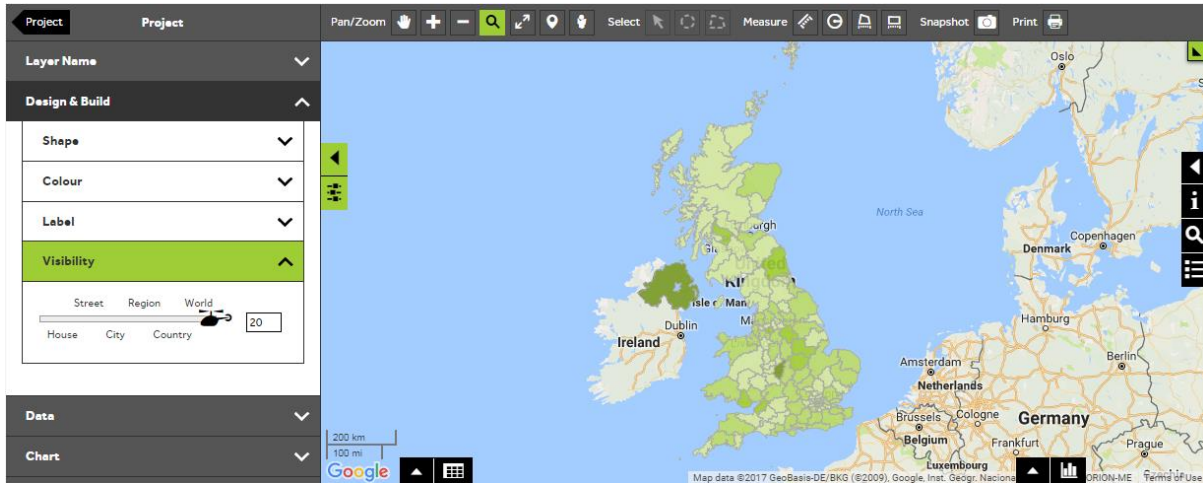
- To style your own data, **Open an existing project** and then select **My Data**, click on the Hot-Spot layer you wish to style.



2 of 3

Select the visibility panel

- Within the layer editor panel select **Design and Build**, from here you can control how the Hot-Spots are displayed. Expand the **Visibility** section to control the zoom level at which your Hot-Spots are displayed.

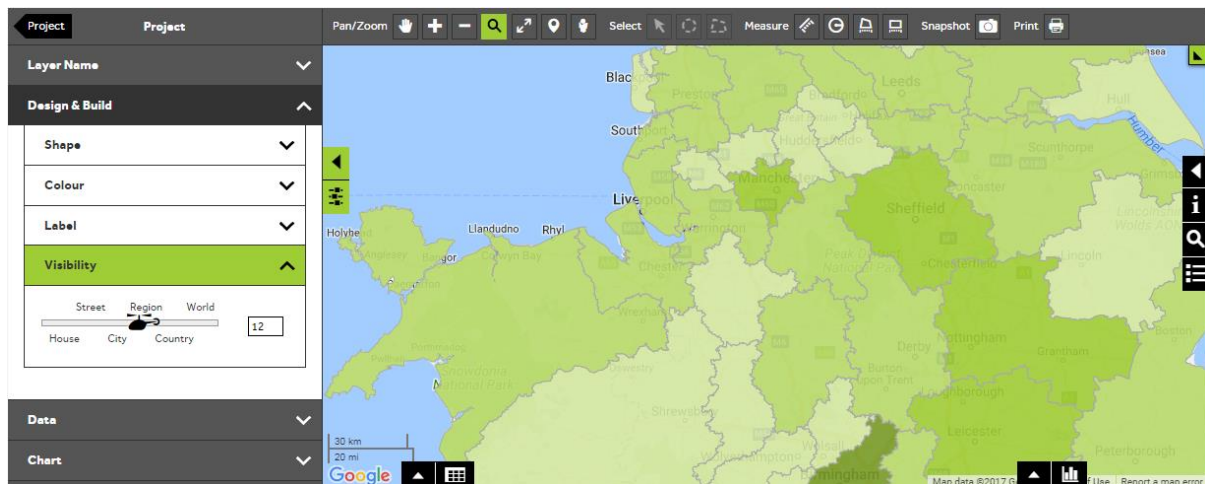


3 of 3

Select visibility level

- Initially all layers are set to the visibility level **World** which means that the Hot-Spots in your layer will be visible regardless of the zoom level. To change the maximum visibility level click and drag the slider or type a value between 1 and 20 in the number box. A value of 20 means that the layer will be visible at all levels and a value of 1 means that the layer will only be displayed at very zoomed in levels.

After changing the visibility level you may find that your Hot-Spots are no longer visible on the map. To display your Hot-Spots again, you will need to click on the **Zoom tool** which can be found above the map and zoom into the level that you have setup for your layer.



What do you want to do next?

You may wish to change the colour of your Hot-Spots, or you may wish to filter your Hot-Spots to show specific number ranges only. Please refer to the following sections for further assistance:

- Refer to: **Hot-Spot Steps - Style Layer - Colour**
- Refer to: **Hot-Spot Steps - Filter Data**
- Refer to: **Hot-Spot Panel** (help guide)
- Contact: **Geoplan Support**