

## Changing the name of a Hot-Spots layer

Once you have Hot-Spots added as a layer to your project you can use the **Hot-Spot Panel** to control the name and appearance of the layer, as well as the data associated with it:

The following instructions will give you a step by step guide on how to change the name of the Hot-Spots layer in SKiN.

### Before you begin

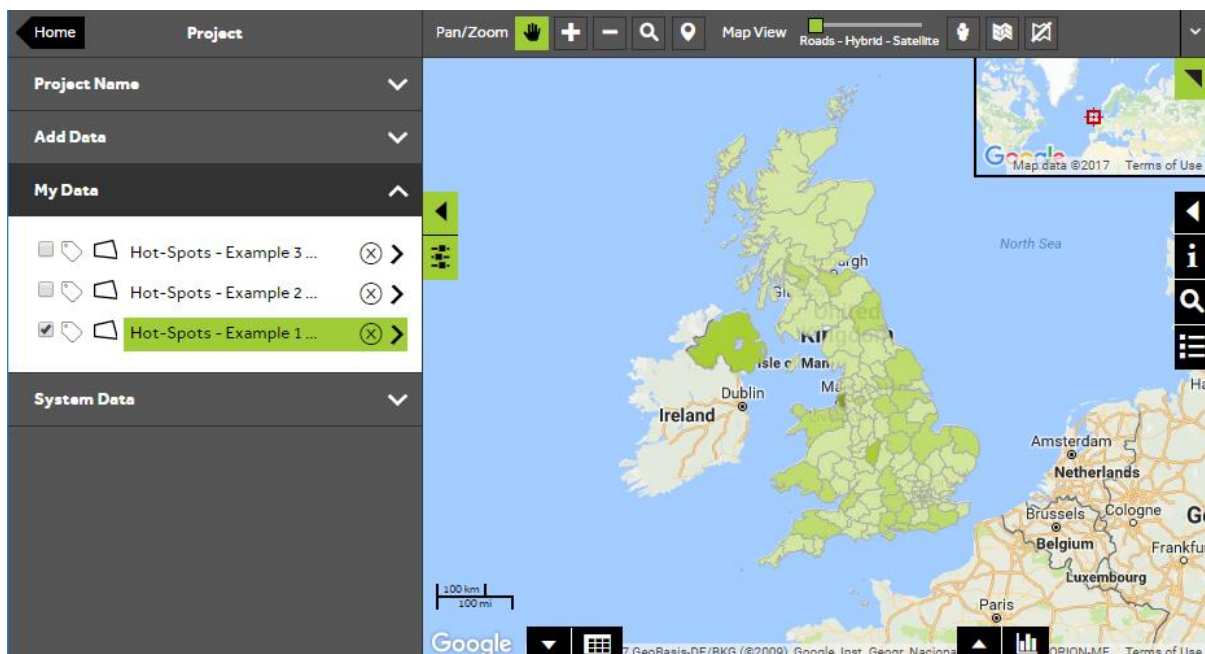
Before you start styling your Hot-Spots, make sure that you have the data set up in a saved project. If you need assistance getting the data into SKiN please refer to the following sections:

- Hot-Spot Steps - Create Project
- Hot-Spot Steps - Import Data
- Hot-Spot Steps - Add Existing Layer



### 1 of 3 Style a Hot-Spots layer

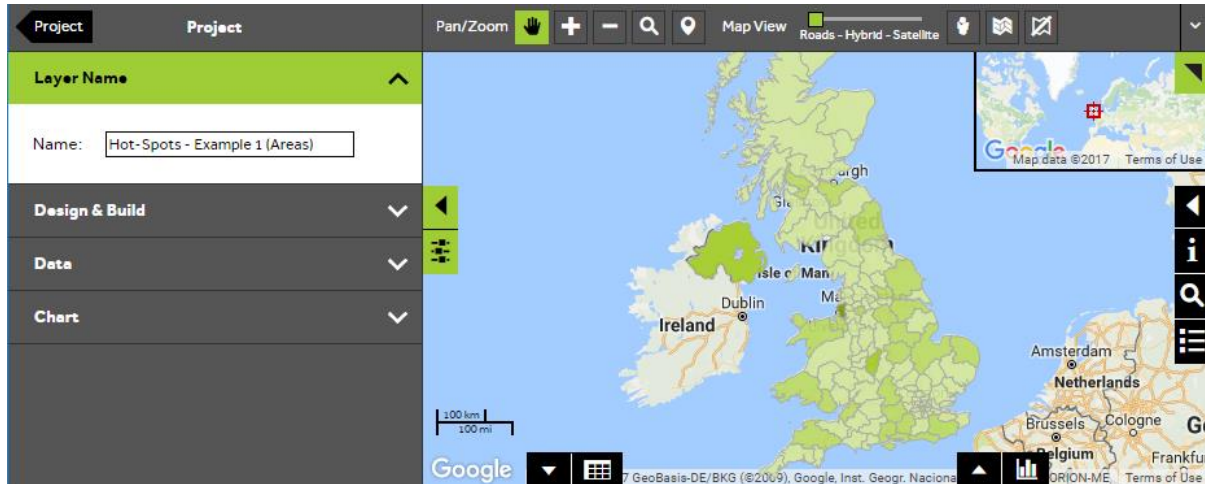
- To style your own data, select **Open an existing project** and then **My Data**, before clicking on the layer you wish to style.



2 of 3

## Select the layer name panel

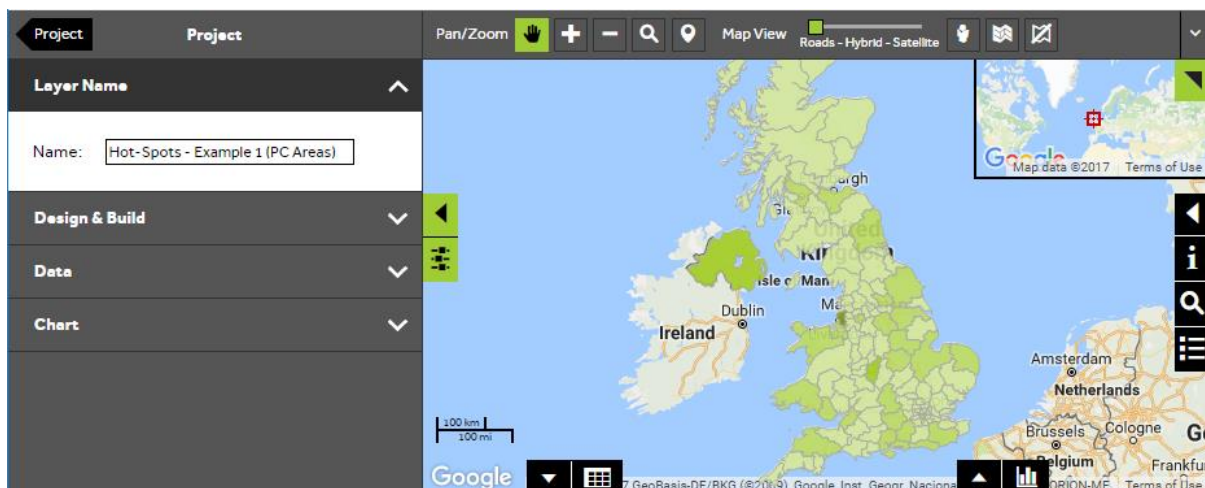
- Within the layer editor panel select **Layer Name** and click with you mouse to expand the panel.



3 of 3

## Change the layer name

- To change the layer name type an appropriate name for the layer into the **Name** text box. A tip is to ensure it is short, unique to the layer and descriptive. You are now ready to use the layer.



---

## What do you want to do next?

You may wish to change the colour or label of your Hot-Spots, or you may wish to filter your Hot-Spots to show specific number ranges only. Please refer to the following sections for further assistance:

- Refer to: **Hot-Spot Steps - Style Layer – Colour**
- Refer to: **Hot-Spot Steps - Style Layer – Labels**
- Refer to: **Hot-Spot Steps - Filter Data**
- Refer to: **Hot-Spot Panel** (help guide)
- Contact: **Geoplan Support**