

## Changing the label of Hot-Spots

Once you have Hot-Spots added as a layer to your project you can use the **Hot-Spot Panel** to control the appearance of the layer, as well as the data associated with it. The following instructions will give you a step by step guide on how to switch on/off Hot-Spot labels, how to change the labels that are displayed and how to add additional labels.

### Before you begin

Before you start styling your Hot-Spots, make sure that you have the data set up in a saved project. If you need assistance getting the data into SKiN please refer to the following sections:

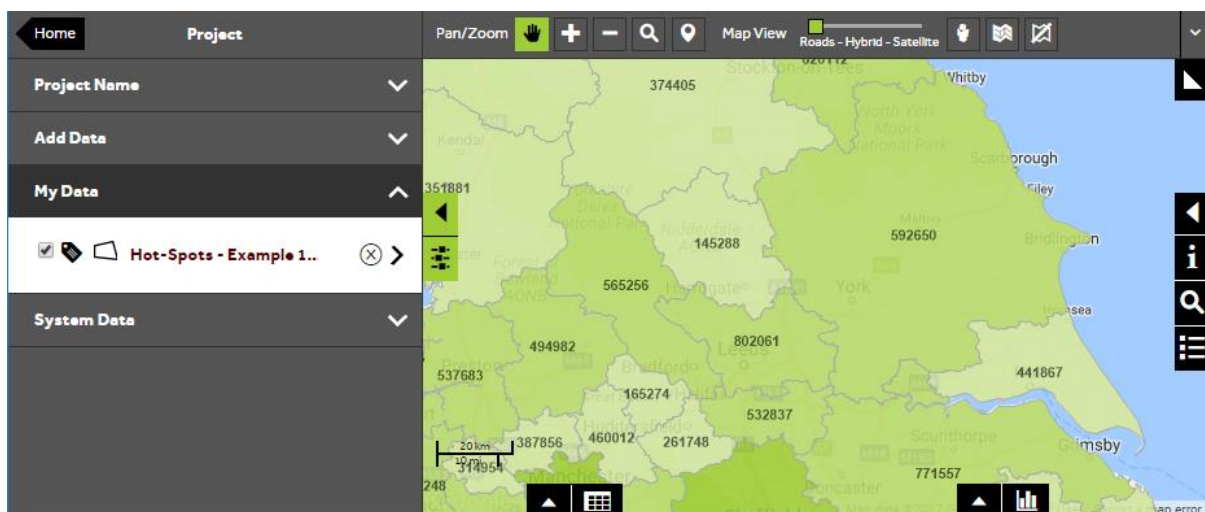
- Hot-Spot Steps - Create Project
- Hot-Spot Steps - Import Data
- Hot-Spot Steps - Add Existing Layer



1 of 7

### Switch on Hot-Spot Layer labels

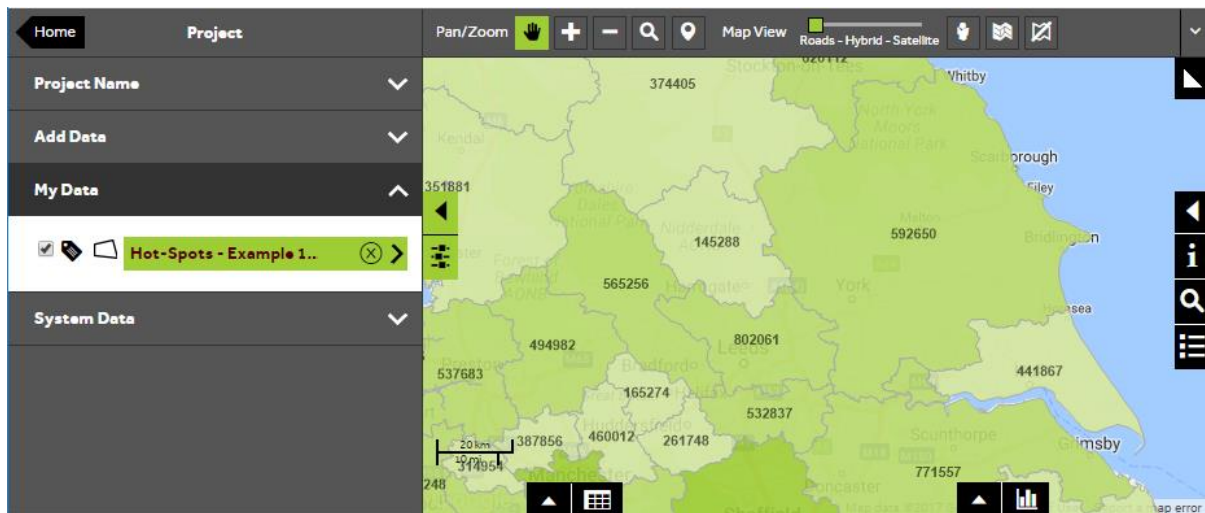
- To switch on your Hot-Spot layer labels, **Open an existing project** and then select **My Data**, click on the label icon which can be found to the left of your Hot-Spots layer name. The Hot-Spot labels will then be displayed.



2 of 7

## Style a Hot-Spot layer

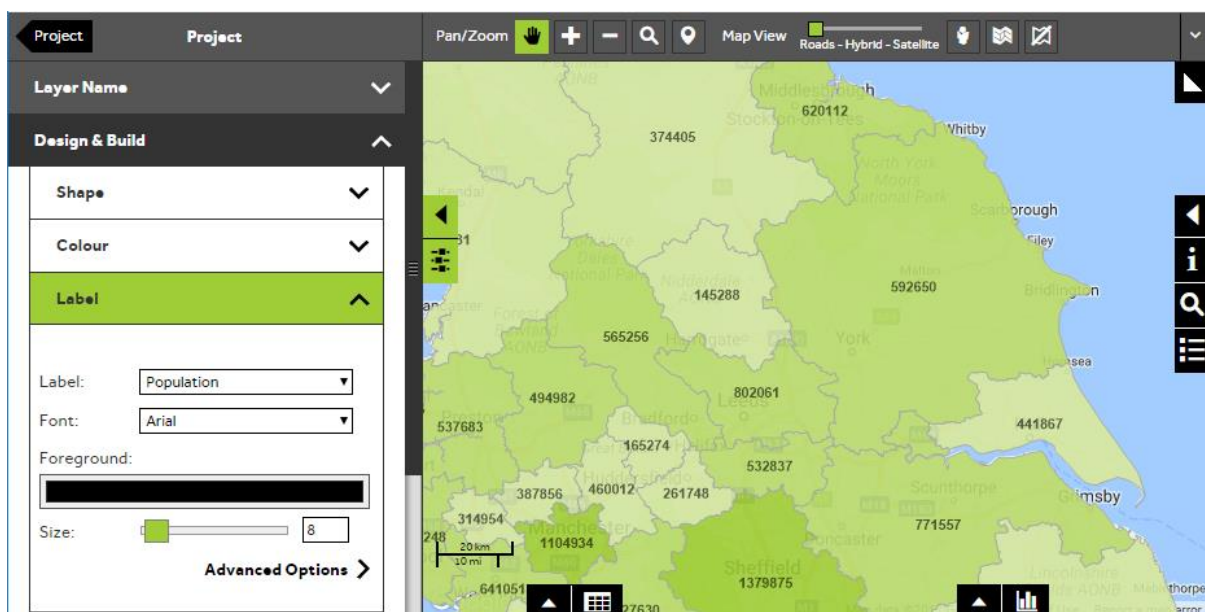
- To style your layer, open the layer editor by clicking on the name of the Hot-Spot layer that you want to change.



3 of 7

## Select the label panel

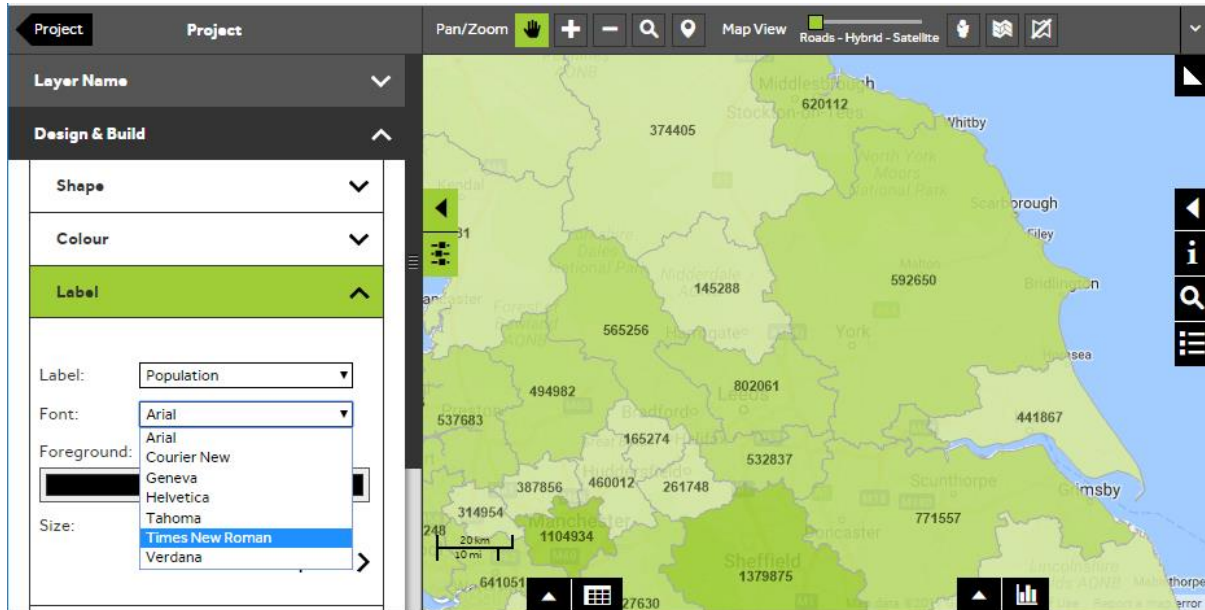
- Within the layer editor panel select **Design and Build**, from here you can control how the Hot-Spots are displayed, expand the **Label** selection panel.



4 of 7

## Change the label and font

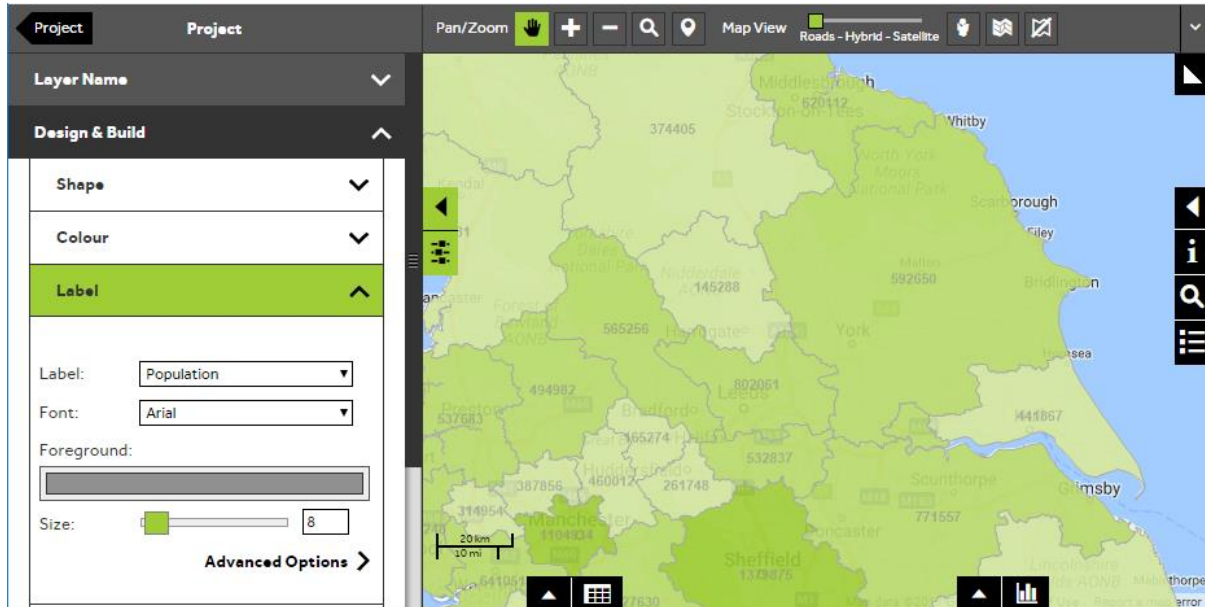
- To change the label to another column from your data, select the required column from the **Label** dropdown list, and to change the Font select the required font from the **Font** dropdown list.



5 of 7

## Change the label colour and size

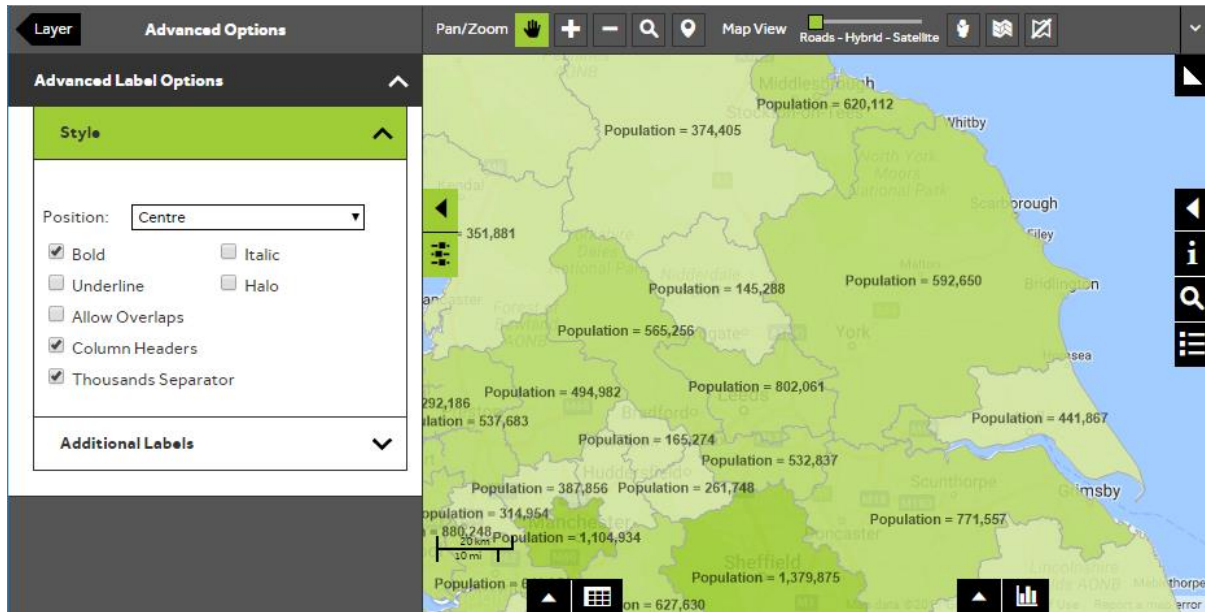
- You can change the colour of the label by clicking in the coloured box next to **Foreground** and selecting a colour from the palette. To change the size of the labels, click and drag the **Size** bar until it shows the required size or type in a size in the number box.



6 of 7

## Use advanced options to change labels

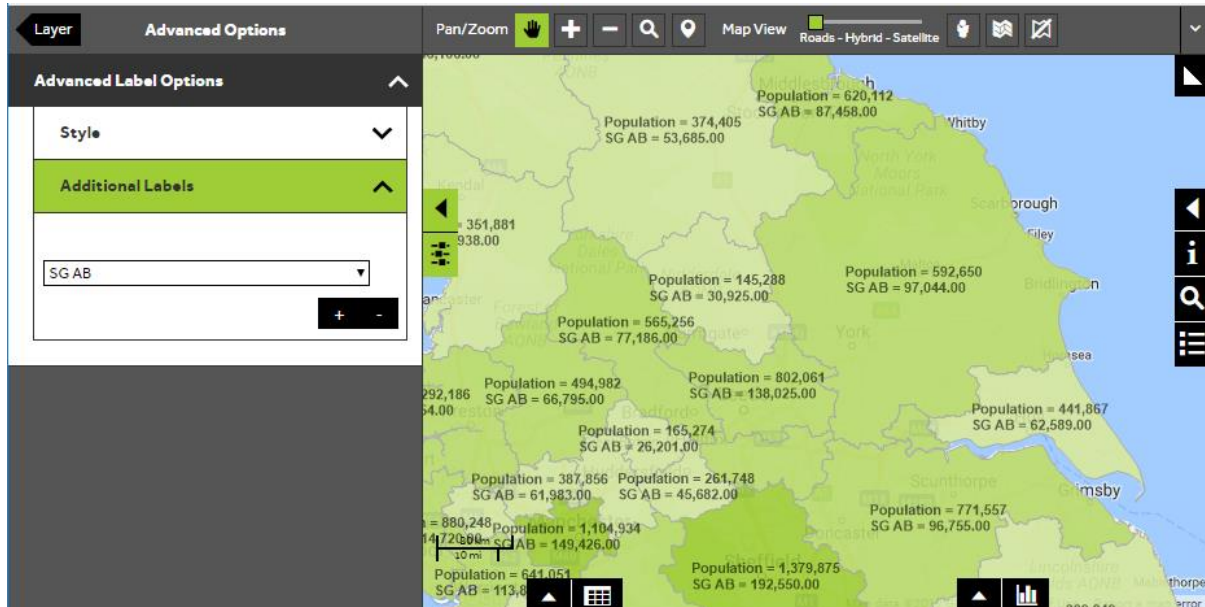
- You can make changes to the way in which the labels are displayed through **Advanced Options**. To change the position of the label select one of the options in the **Position** dropdown box. There are several other options for styling your label which can be ticked or unticked as required.



7 of 7

## Add additional labels

- You can add additional labels by opening the **Additional Labels** section and selecting a data column from the dropdown list. The additional labels will appear on the map automatically. To add further additional labels, press the + button.



## What do you want to do next?

You may wish to change the colour of your Hot-Spots based on a different column from your data or you may wish to reclassify your data. Please refer to the following sections of the support area for further assistance:

- Refer to: **Hot-Spot Steps - Style Layer - Colour**
- Refer to: **Hot-Spot Panel** (help guide)
- Contact: **Geoplan Support**