

## Opening an existing project

To start mapping you need to create a project or open a project that you have created previously.

A project is used to group together a collection of map layers that have been put together in order to fulfil a specific objective. The following instructions are a step by step guide showing how to open an existing project so that it is ready to view, add layers to and is available for future use.

### Before you begin

Before you open a project in SKiN you may like to see an overview of how the SKiN system works. Please refer to the following section:

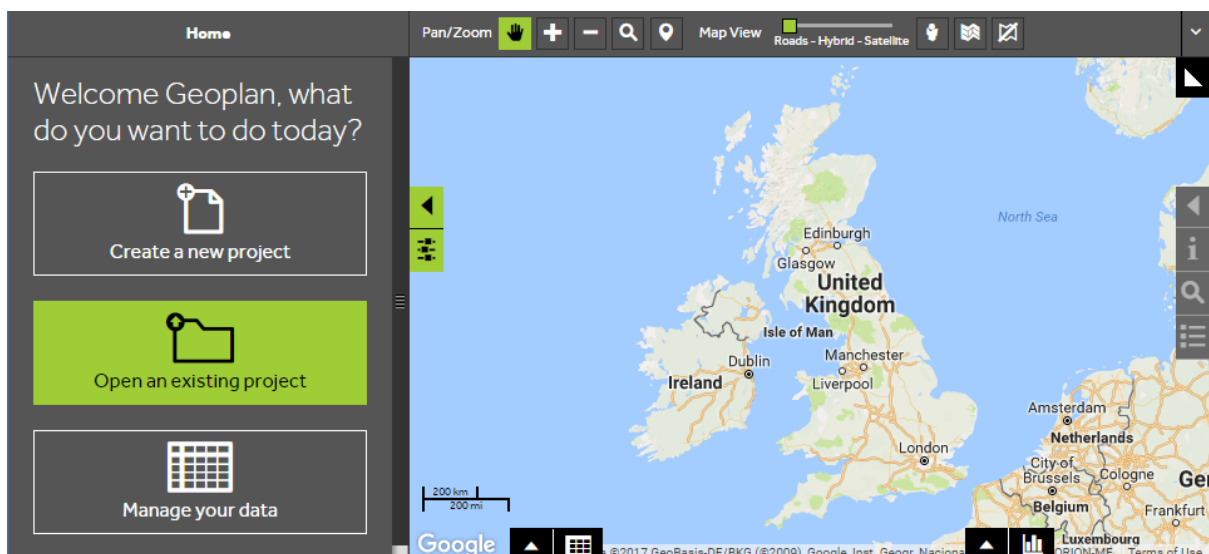
- SKiN System Overview



1 of 3

## Open an existing project

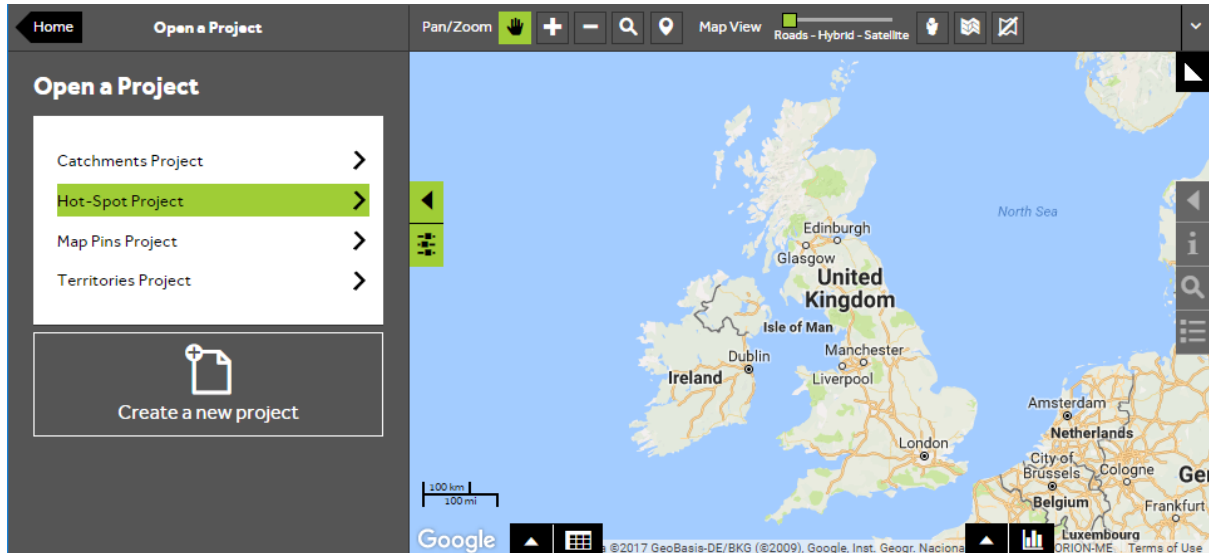
- Login to SKiN using your **username** and **password** and click on **Open an existing project**.



2 of 3

## Choose your project

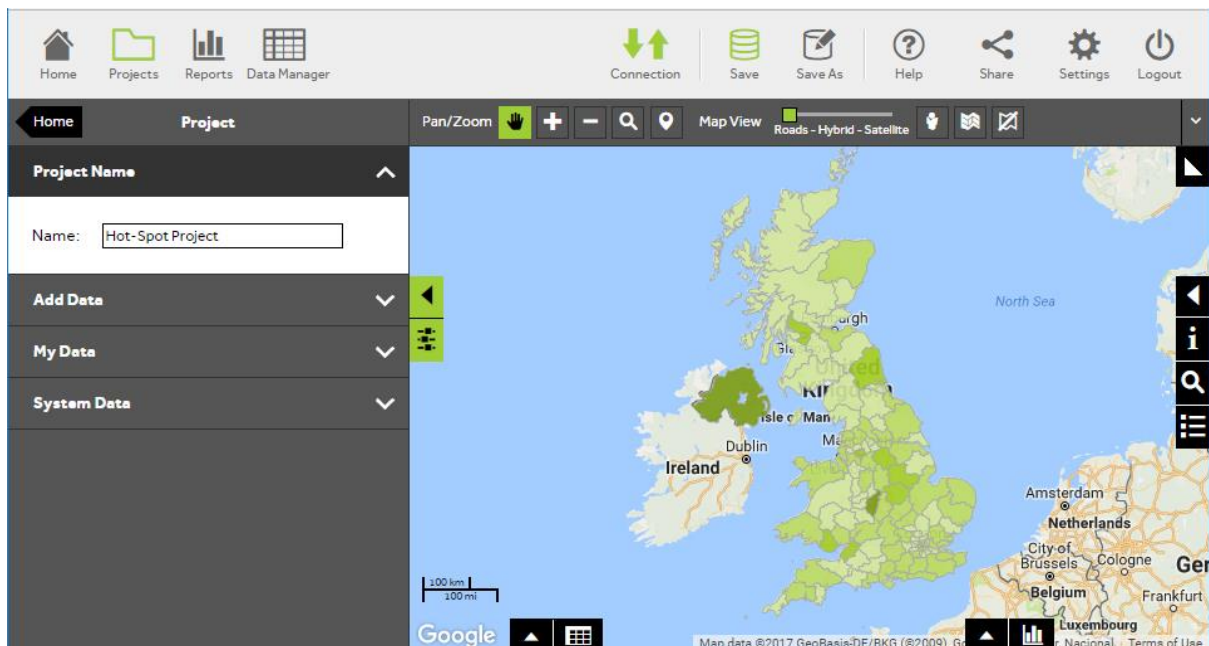
- Select the existing project from the list and click to open.



3 of 3

## Save your project

- To save your project click on the **Save** button above the toolbar. This will save your project with any changes you have made to the project since opening it. It is important to save your project at regular intervals as you are adding layers and making changes to the project.



---

## What do you want to do next?

You may wish to add further layers to the map or add a layer that has been created previously. Please refer to the following sections for further assistance:

- Refer to: **Hot-Spot Steps – Import Data**
- Refer to: **Hot-Spot Steps – Add Existing Layer**
- Contact: **Geoplan Support**