

## Using the Info Tool

The **info tool** can be accessed by clicking the **i** button to open the **Info panel**.

The following instructions will give you a step by step guide on how to use the information tool.

### Before you begin

Before you can use the Information tool within SKiN, you may wish to have your data set up in a saved project. If you need assistance getting the data into SKiN please refer to the following sections:

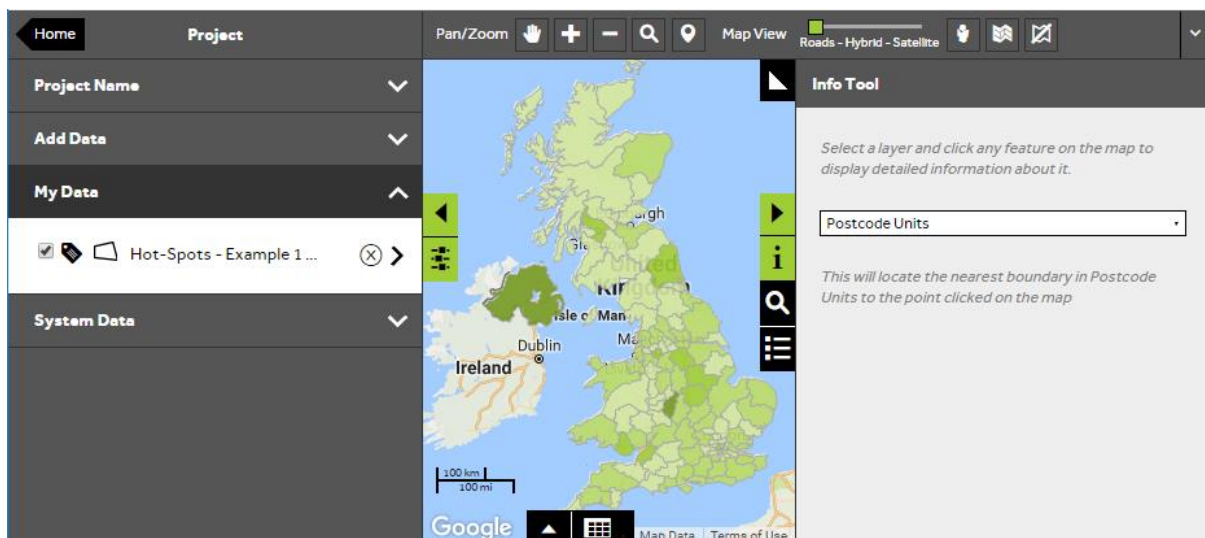
- Hot-Spot Steps - Create a Project
- Hot-Spot Steps - Import Data
- Hot-Spot Steps - Add Existing Layer



1 of 3

### Opening the Info Tool

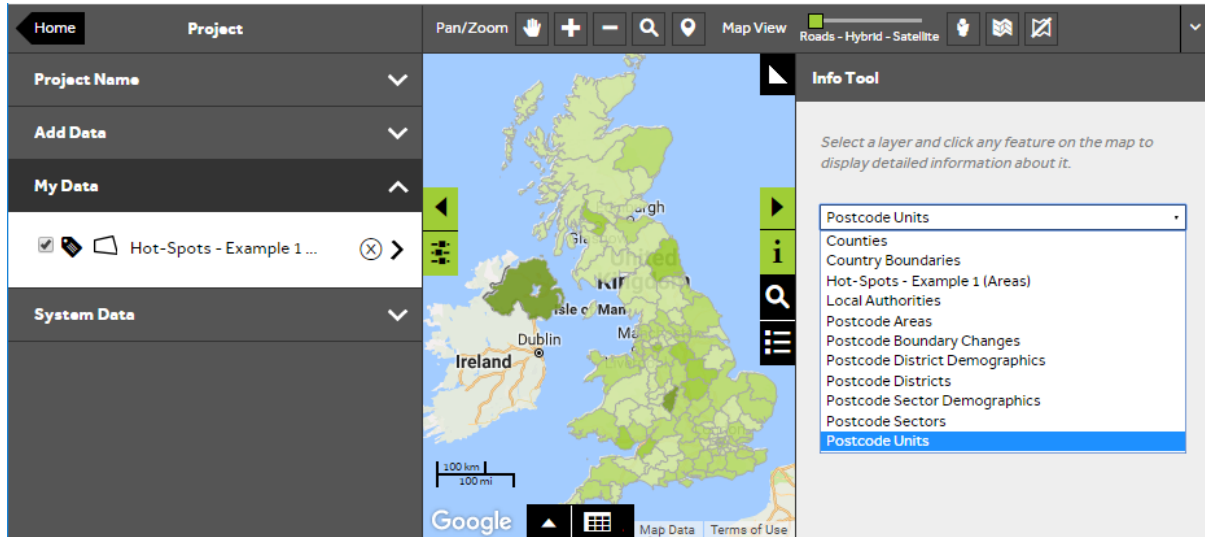
- To find information about Hot-Spots on the map, **Open an existing project** and then select the **Information Tool** to the right of the map.



2 of 3

## Choose the type of information

- From the Information panel, you can select any layer from your project and also system data layers from the information tool dropdown box.



3 of 3

## Information selection

- From the dropdown box select the type of information you would like to interrogate, then click on the feature on the map to reveal the details associated with it.

The screenshot shows the Geoplan software interface. On the left is a navigation pane with sections: Home, Project, My Data, and System Data. The 'My Data' section is expanded to show 'Hot-Spots - Example 1...'. The main area is a map of Ireland and the UK with a 'Hot-Spots' layer overlaid. On the right is an 'Info Tool' panel. It contains a dropdown menu set to 'Hot-Spots - Example 1 (Areas)'. Below the dropdown is a text box: 'This will locate the nearest boundary in Hot-Spots - Example 1 (Areas) to the point clicked on the map'. At the bottom of the Info Tool is a table with the following data:

Hot-Spots - Example 1 (Areas)	
ID	BT
COUNT	235
Population	1897740.00
Households	703056.00
SG AB	322776.00
SG C1	552181.00
SG C2	399295.00
SG D	442980.00
SG E	150799.00
SG TOT	1868031.00

## What do you want to do next?

You may wish to change the label or colour of the Hot-Spots based on different column from your data. Please refer to the following sections of the support area for further assistance:

- Refer to: **Hot-Spot Steps - Style Layer – Changing Colour**
- Refer to: **Hot-Spot Steps - Style Layer – Changing Labels**
- Contact: **Geoplan Support**