

Importing Hot-Spots data to the map

To add a Hot-Spot layer to the map, you can import data from an external source such as **Microsoft Excel**. The following instructions will give you a step by step guide on how to import your data from Microsoft Excel into SKiN and display them as Hot-Spots on a map.

Before you begin

Before you start using SKiN you need to ensure you have data setup and ready to use within SKiN. For the 4 main checks to get help on setting up your data please refer to the following sections:

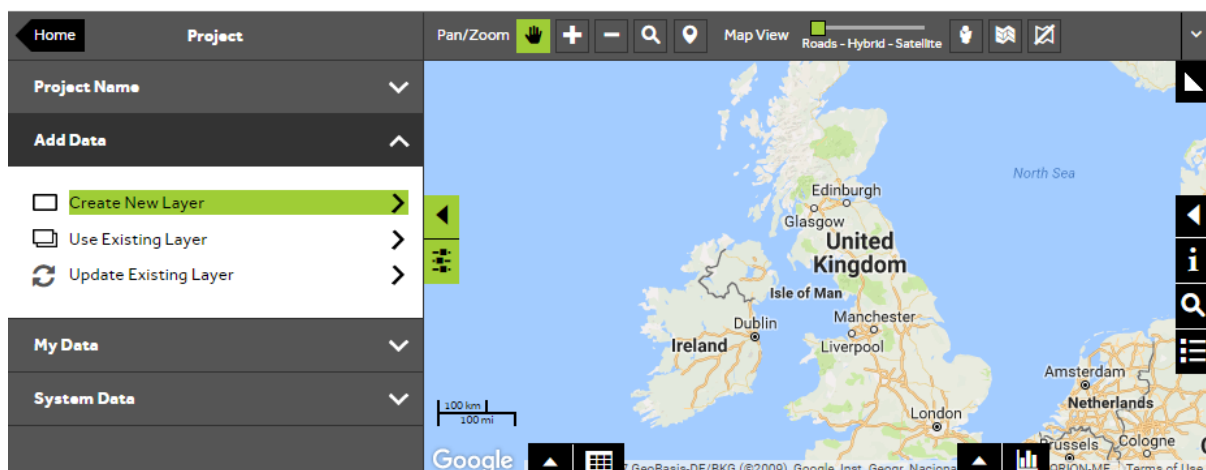
- Hot-Spots Steps – File Setup



1 of 6

Create new layer

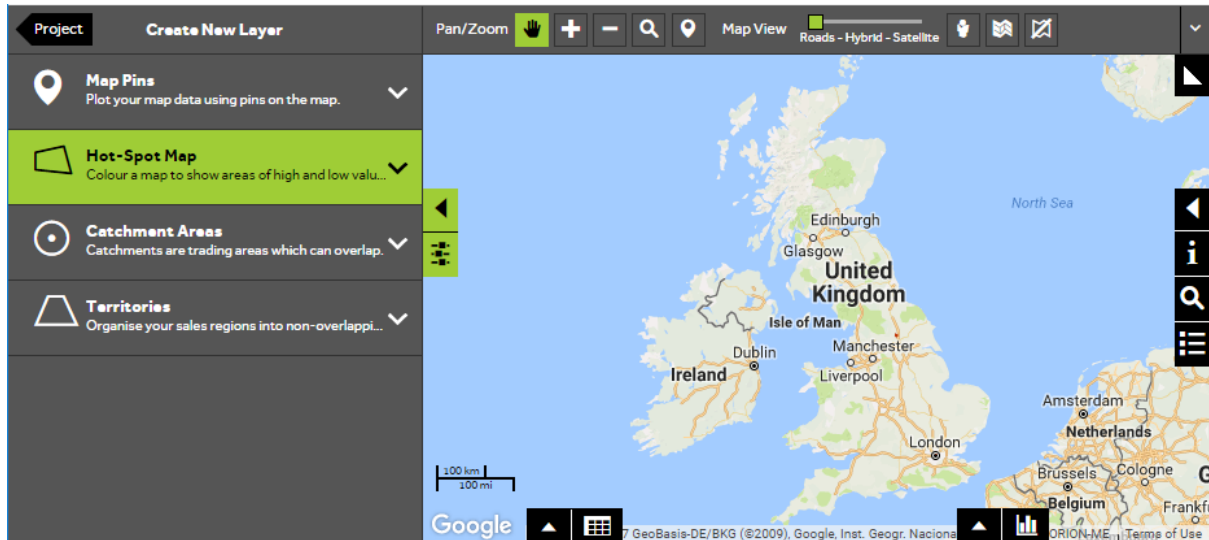
- To add your own data, **Open or Create a new project** and then choose **Add Data, Create New Layer**.



2 of 6

Choose which type of layer to create

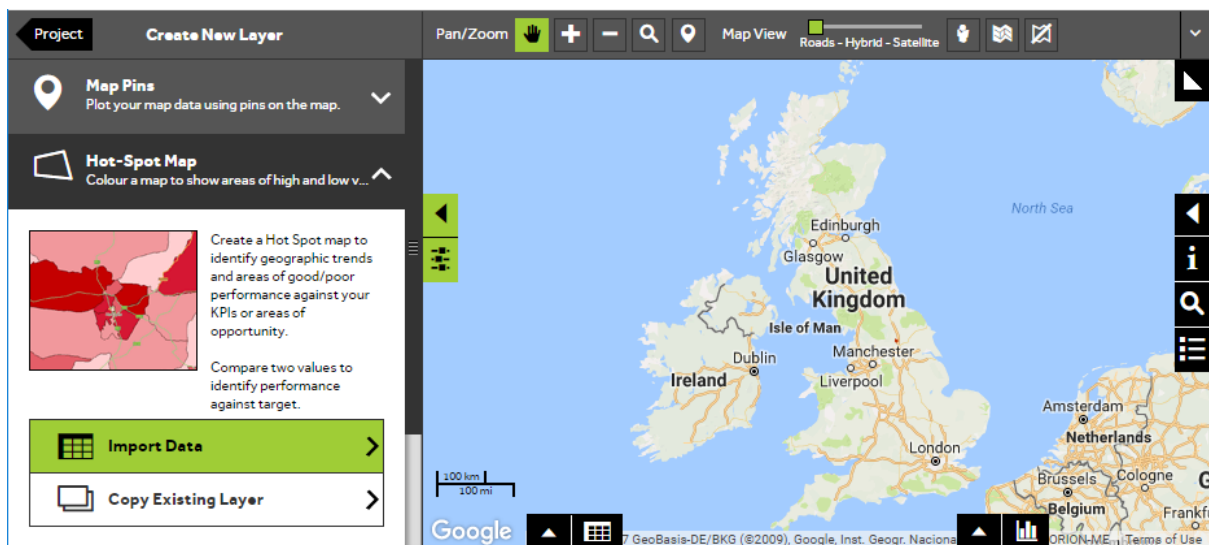
- Select **Hot-Spot Map** to add each of the rows in your data as Hot-Spots on the map.



3 of 6

Import your data

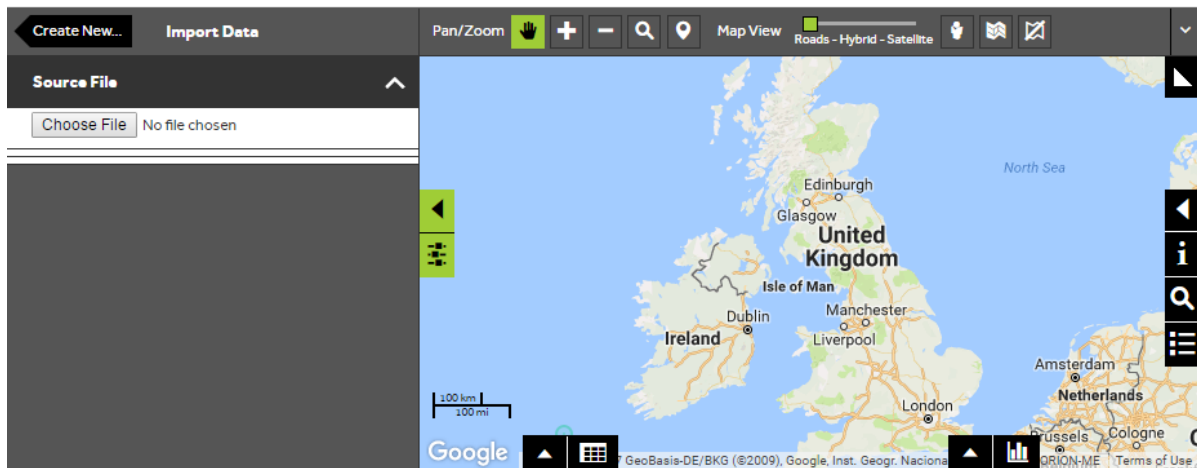
- To add Hot-Spots to the map, you can import data from an external source such as Microsoft Excel. Select **Import Data** to add your data to the map.



4 of 6

Choose the file that you want to display

- In order to map the locations automatically, your data needs to contain columns with either a **Postcode** or an **Address** or **X/Y Coordinates**.
- Press **Choose file** and locate the file that contains the records that you would like to display as catchments on the map.



5 of 6

Check that the location method is correct

- The system will review the first 10 records in your file and look for a column it can use to locate each record on the map (i.e. Postcode, Address, X and Y).
- If the system finds one of these columns, it will show you the first 10 locations on the map and highlight the column it is using in the **Data View**.
- If the system cannot find a suitable column automatically, you will be re-directed to the **Advanced Options** for importing. In the **Import Advanced Options, Location Settings** section you can specify both the method used to map each location and the column that contains this information. Return to the preview screen by clicking the **Import Data back arrow** button.
- Choose which boundaries you want to use to create your Hot-Spot map, and which column in your data which you want to map.
- Once you are happy with your Location Method, press **Confirm Selection** to import the remaining records.

The screenshot shows the 'Location Method' configuration panel on the left and a map/data table on the right. The map displays the United Kingdom and Ireland with several locations marked. The data table below the map shows the following information:

Location Match	Location Type	ID	Postcode	Population	Households	SG AB	SG C1	SG C2	SG C
Matched	AB10 1	Pin 1	AB10 1	2183	1305	495	610	217	3
Matched	AB10 6	Pin 2	AB10 6	9580	5219	2908	2930	776	9
Matched	AB10 7	Pin 3	AB10 7	9258	4341	1527	2106	995	12
Matched	AB11 5	Pin 4	AB11 5	1639	926	282	434	182	3
Matched	AB11 6	Pin 5	AB11 6	7106	4031	1791	2220	752	9

Page 1 of 2 (10 items)

6 of 6

Check how many of your records can be displayed

- The **Matched Records** figure here shows how many of your records could be located on the map. Any Records that could not be matched will have **'Unmatched'** in the **Location Match** column in the **Data View** below. You will need to update the column in the import file and start the import process again if you wish to include the unmatched records.
- Once you are happy with the **Matching Results**, press **Create Layer** and wait until the processing is complete. Your layer will then be created and ready for use.

ID	COUNT	Population	Households	SG AB	SG C1	SG C2	SG D	SG E
AB	91	518446.00	220847.00	89137.00	112110.00	70904.00	69340.00	69618.00
AL	35	246682.00	100374.00	65265.00	58431.00	20120.00	22637.00	25619.00
B	228	1849212.00	743364.00	268693.00	383633.00	218292.00	281068.00	259394.00
BA	67	449103.00	188659.00	81465.00	106580.00	57096.00	55930.00	49372.00
BB	66	494982.00	199074.00	66795.00	99400.00	62796.00	84628.00	61355.00

What do you want to do next?

If you don't see the Hot-Spots on the map or you would like further assistance. Please review the following information:

- Watch a video on: **Import a Hot-Spot layer** from the training videos section on the help guide
- Refer to: **Data Formatting** (help guide)
- Contact: **Geoplan Support**