

Editing data for Hot-Spots

Once you have Hot-Spots added as a layer to your project you can use the **Hot-Spots Panel** to control the appearance of the layer, as well as the data associated with it. The following instructions will give you a step by step guide on how to edit data within SKiN.

Before you begin

Before you start using SKiN you need to ensure you already have data imported into SKiN and saved in another project. If you need assistance getting data into SKiN please refer to the following sections:

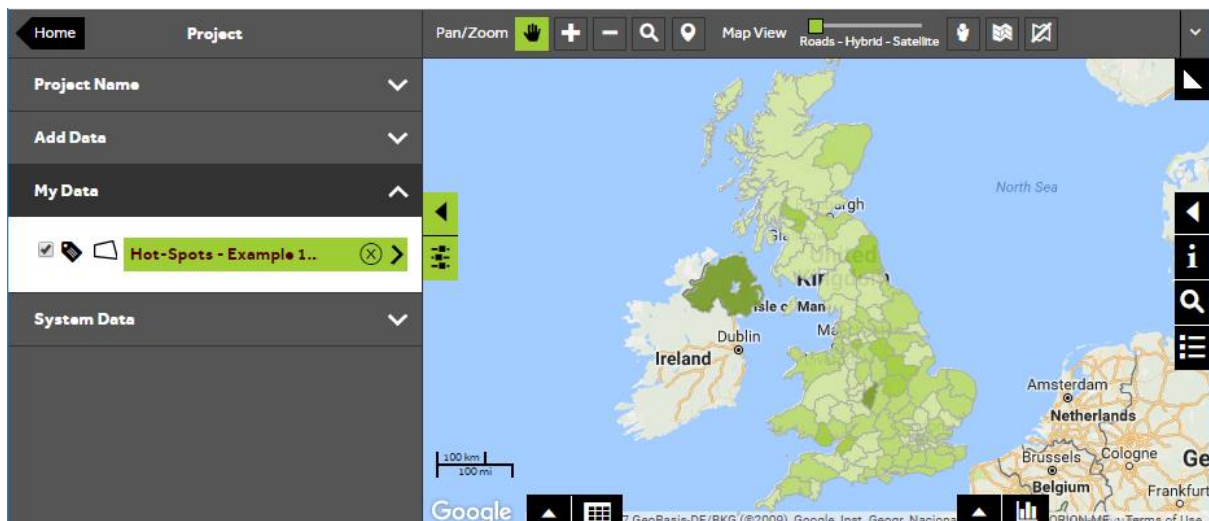
- Hot-Spot Steps - Create a Project
- Hot-Spot Steps - Import Data
- Hot-Spot Steps - Add Existing Layer



1 of 6

Editing data in a Hot-Spots layer

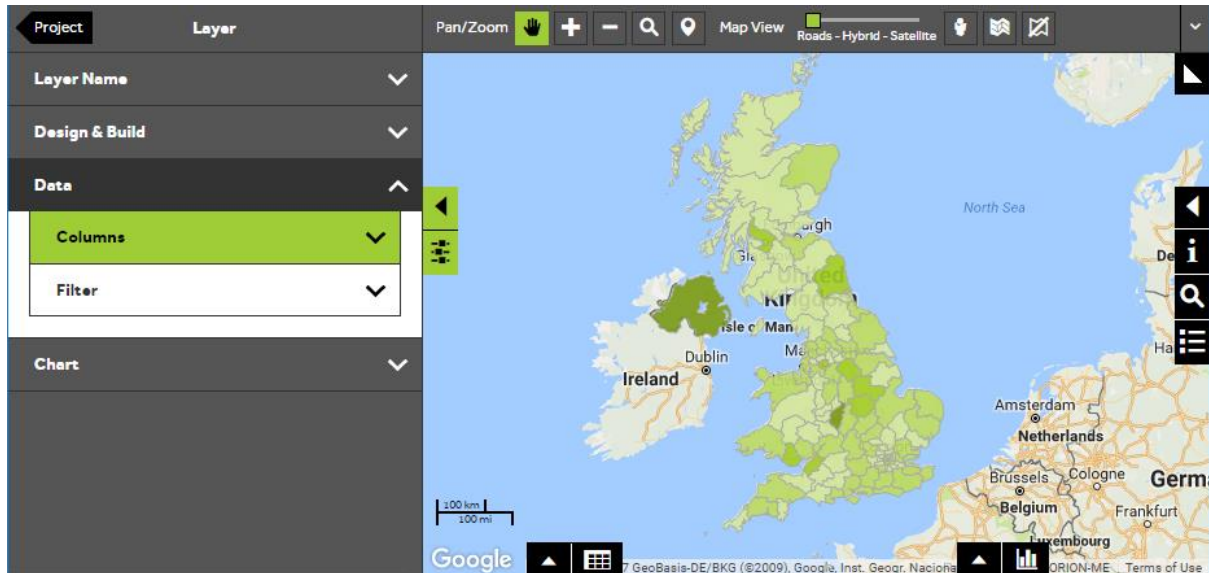
- To edit your own data, **Open an existing project** and then select **My Data**. Click on the layer you wish to change.



2 of 6

Editing the data

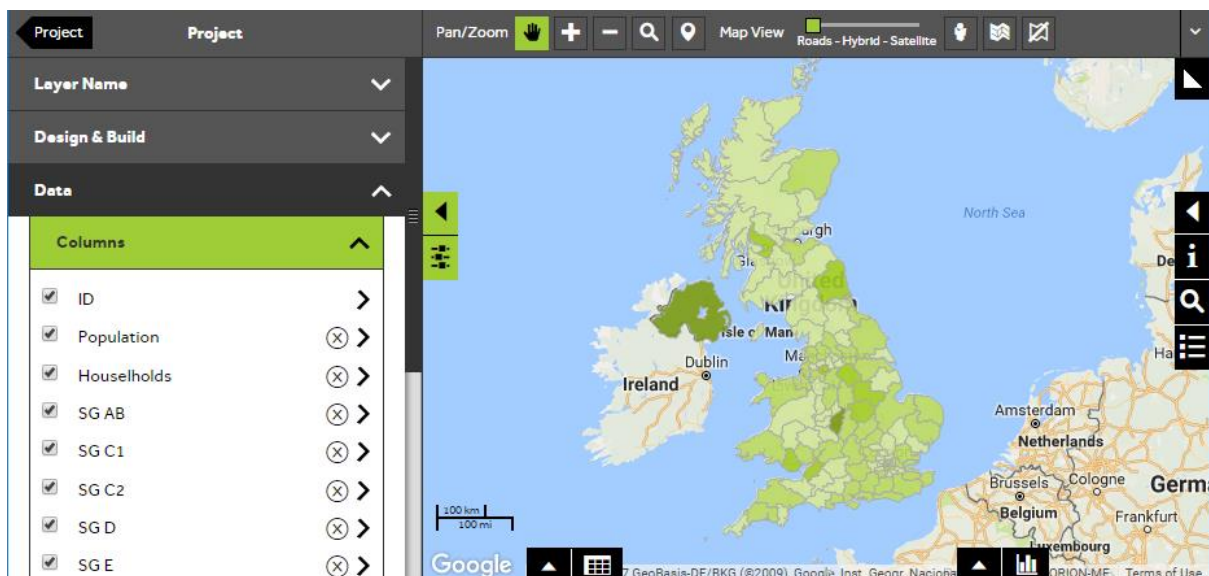
- Within the layer editor panel select **Data**, from here you can control the data associated with your Hot-Spots, expand the **Columns** selection panel.



3 of 6

Changing which columns are displayed

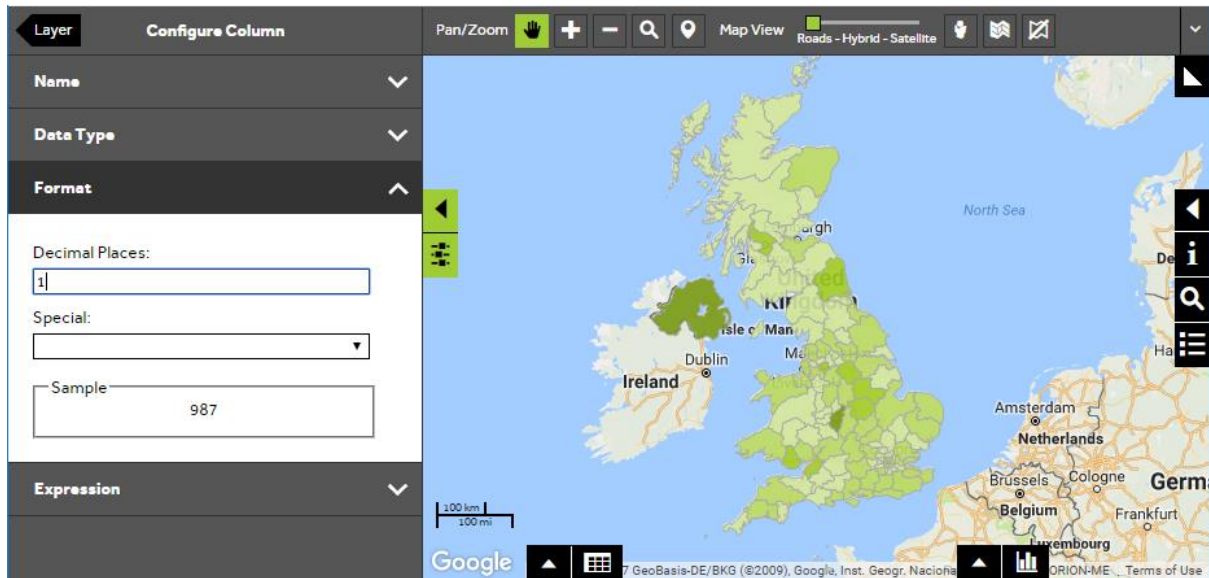
- You can control the columns that are displayed in the **Data View** by ticking/un-ticking the boxes next to each column name.
- You can delete a column by clicking the **X**. Some columns, like the **ID**, cannot be deleted.
- You can add a column by clicking the **+** button.



4 of 6

Column configuration

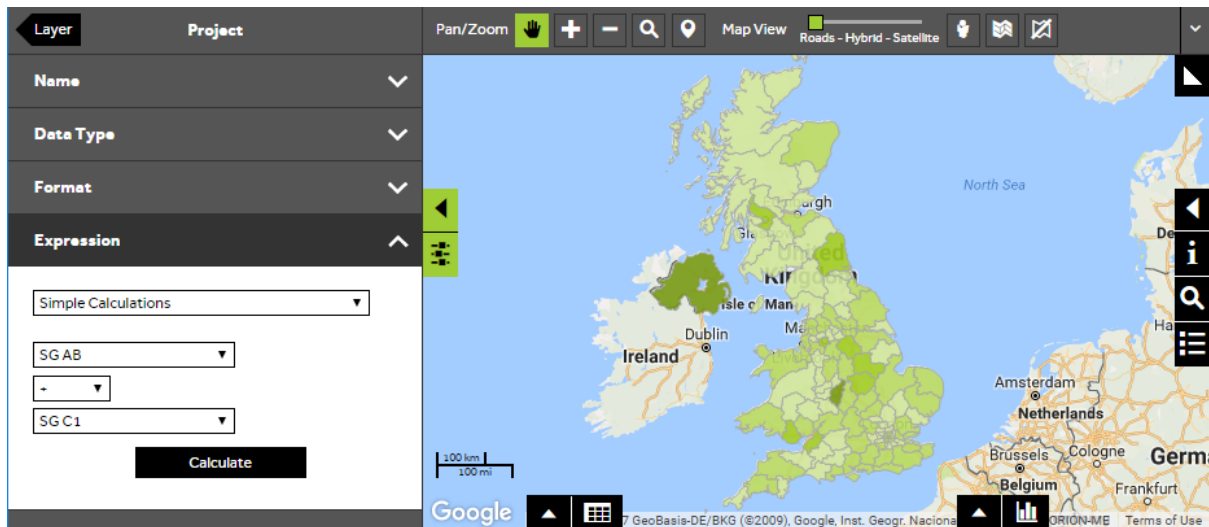
- To edit a column, click on the column name and the panel will update to show the **Column Configuration Panel**. You can change the name of the column by clicking in the **name** box and typing.
- You can change the data type of the column by selecting from the dropdown box.
- For numeric columns, you can set the data format, e.g. the number of decimal places or special formats such as time or date.



5 of 6

Changing the data expression

- To edit a column with a calculation, open the **Expression** section, select the type of calculation from the dropdown list and then use the dropdown boxes to build your calculation. The type of expressions you can choose from are:
 - Simple Calculations** – Allows you to add, subtract, multiply or divide existing columns in your layer.
 - Aggregation Calculations** – Allows you to calculate the Sum, Average, Variance or Standard Deviation of an existing column in your layer.
 - Cartographic Calculations** – Allows you to calculate the X/Y co-ordinates of each feature, and for areas, the surface area in square kilometres, miles, metres or yards.
 - Percentage Calculations** – Allows you to identify a percentage value of an existing column in your layer.
- Click **Calculate**, the values will appear in the column in **Data View**.



6 of 6

Viewing your new data column

- To look at the new data column, open the **Data View** by clicking on the data grid icon (bottom left of map). Your new column will appear after the existing data column in your layer.

	Households	SG AB	SG C1	SG C2	SG D	SG E	SG TOT	NEW
6	220847.00	89137.00	112110.00	70904.00	69340.00	69618.00	411109.00	201247
2	100374.00	65265.00	58431.00	20120.00	22637.00	25619.00	192072.00	123696
2	743364.00	268693.00	383633.00	218292.00	281068.00	259394.00	1411080.00	652326
3	188659.00	81465.00	106580.00	57096.00	55930.00	49372.00	350443.00	188045
2	199074.00	66795.00	99400.00	62796.00	84628.00	61355.00	374974.00	166195

What do you want to do next?

You may wish to change the colour or label of your Hot-Spots, or you may wish to filter your Hot-Spots to show specific number ranges only. Please refer to the following sections for further assistance:

- Refer to: **Hot-Spot Steps - Style Layer – Changing colour**
- Refer to: **Hot-Spot Steps - Style Layer – Changing Labels**
- Refer to: **Hot-Spot Steps - Filter Data**
- Contact: **Geoplan Support**