

## Creating a Snapshot Image

Once you have Hot-Spots added as a layer to your project you can create a snapshot of your map and save it to a file. The following instructions will give you a step by step guide on how to create a snapshot image within SKiN.

### Before you begin

Before you start creating output for your Hot-Spots, make sure that you have the data set up in a saved project. If you need assistance getting the data into SKiN please refer to the following sections:

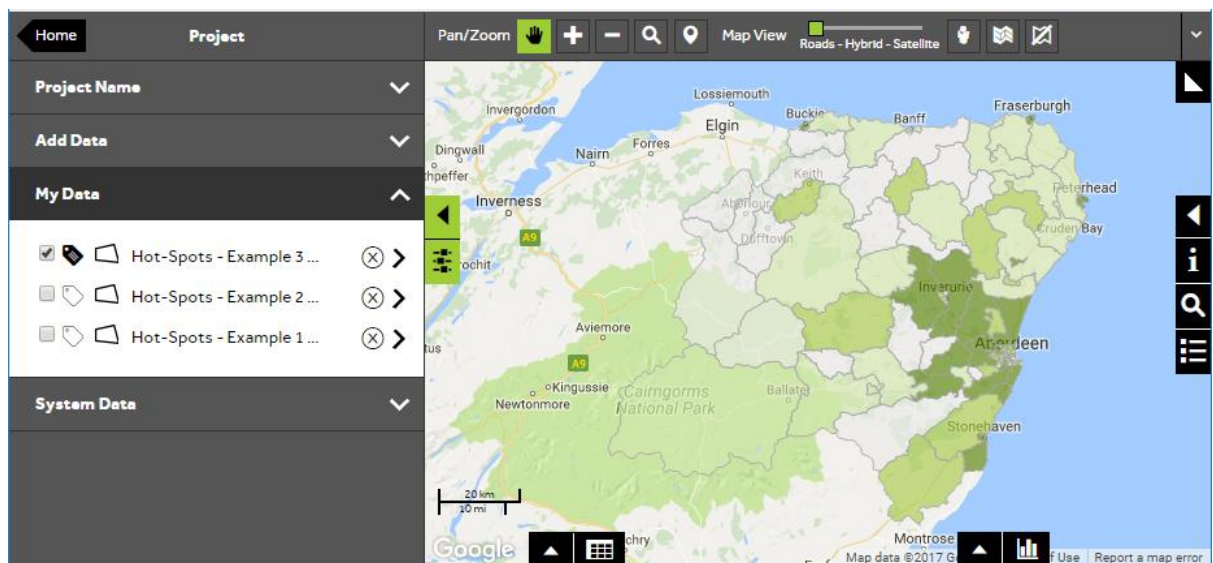
- Hot-Spot Steps - Create Project
- Hot-Spot Steps - Import Data
- Hot-Spot Steps - Add Existing Layer



1 of 4

### Open a project

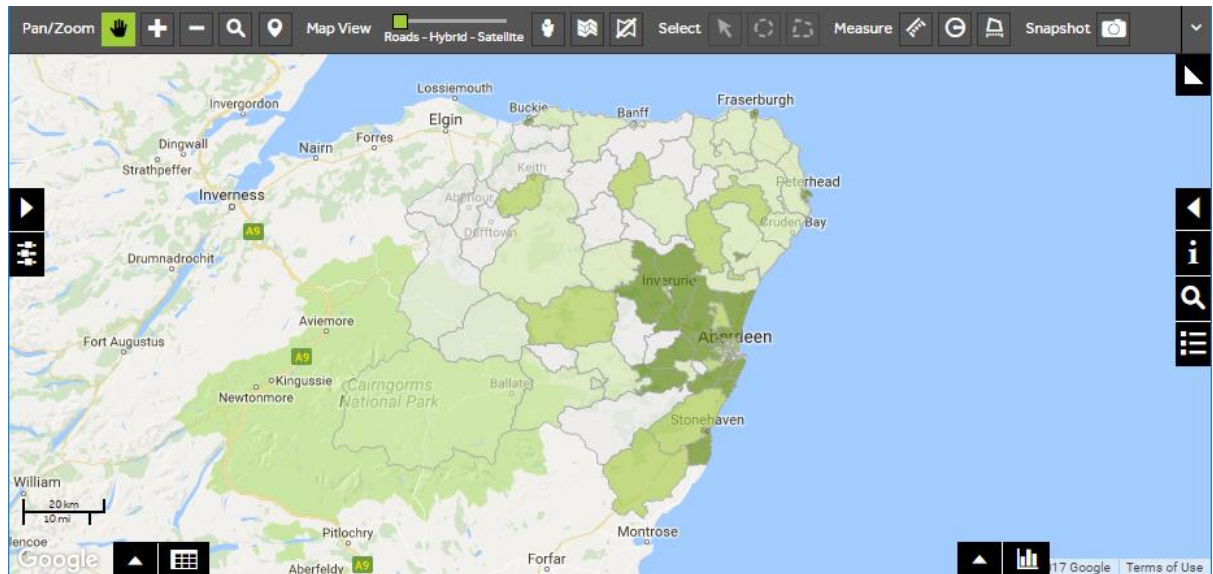
- To create a snapshot of your own data, **Open an existing project** to display the map you would like to capture in the snapshot.



2 of 4

## Create a snapshot

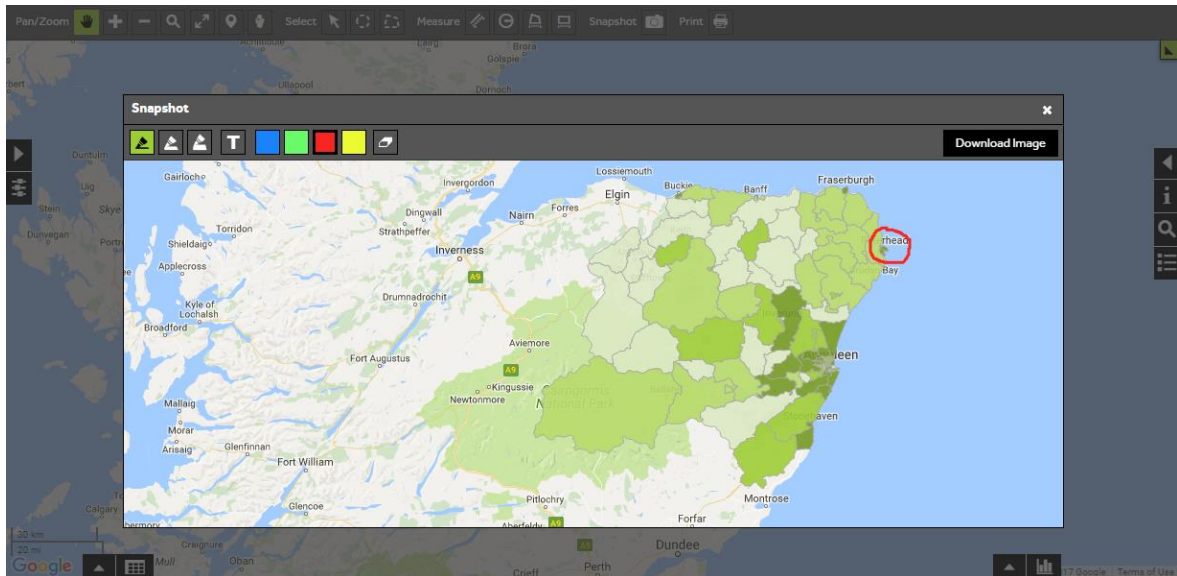
- To create a snapshot of your map view click on the **Snapshot** button. If you cannot see the snapshot button above the map, close the left hand panel by clicking on the arrow at the side of the panel, you should then be able to see the snapshot button.



3 of 4

## Annotate the snapshot

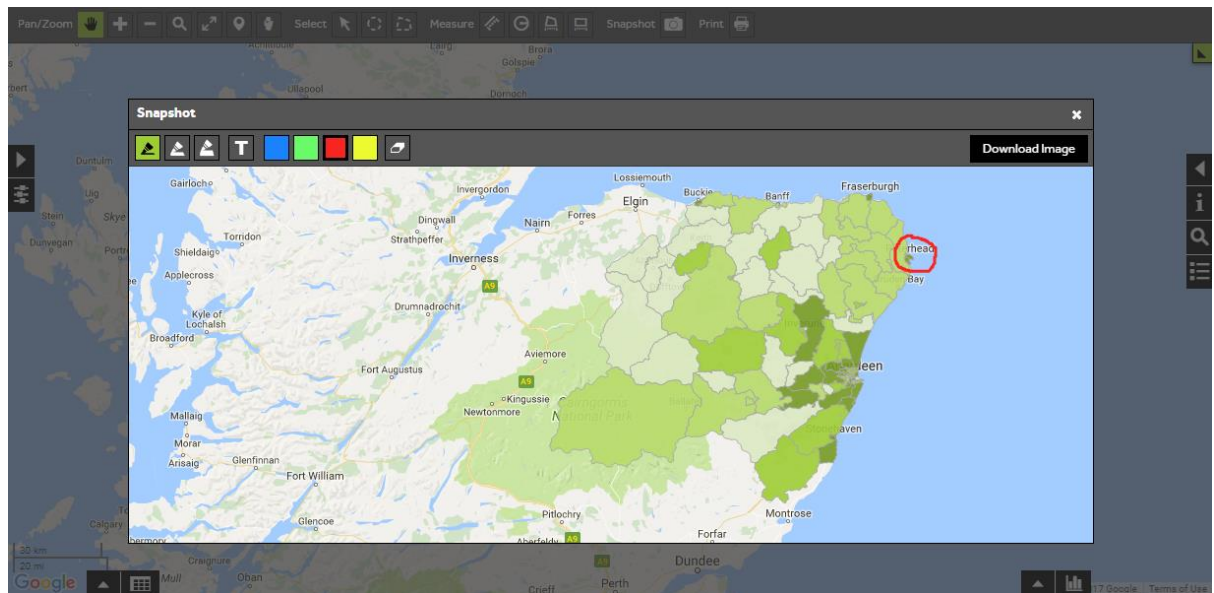
- You can use the drawing tools in the top-left of the snapshot window to annotate the map. You can select the line thickness, add text, change the line colour and erase.



4 of 4

## Save the image

- To save your image to a file, click on **Download Image** at the top right of the snapshot window. A link to the file will appear at the bottom of the screen.



## What do you want to do next?

You may wish to create a report, print a map or export your Hot-Spots to a file, please refer to the following sections for further assistance:

- Refer to: **Hot-Spot Steps - Create Output - Export**
- Refer to: **Hot-Spot Steps - Create Output - Report**
- Refer to: **Hot-Spot Steps - Create Output - Print (OSM)**
- Refer to: **Hot-Spot Steps - Create Output - Print (Google)**
- Contact: **Geoplan Support**