

## Exporting Hot-Spots data to a file

Once you have Hot-Spots added as a layer to your project you can use the **Hot-Spot Panel** to control the appearance of the layer, as well as the data associated with it. The following instructions will give you a step by step guide on how to export Hot-Spots and associated data from within SKiN to Excel.

### Before you begin

Before you start exporting data associated with your Hot-Spots, make sure that you have the data set up in a saved project. If you need assistance getting the data into SKiN please refer to the following sections:

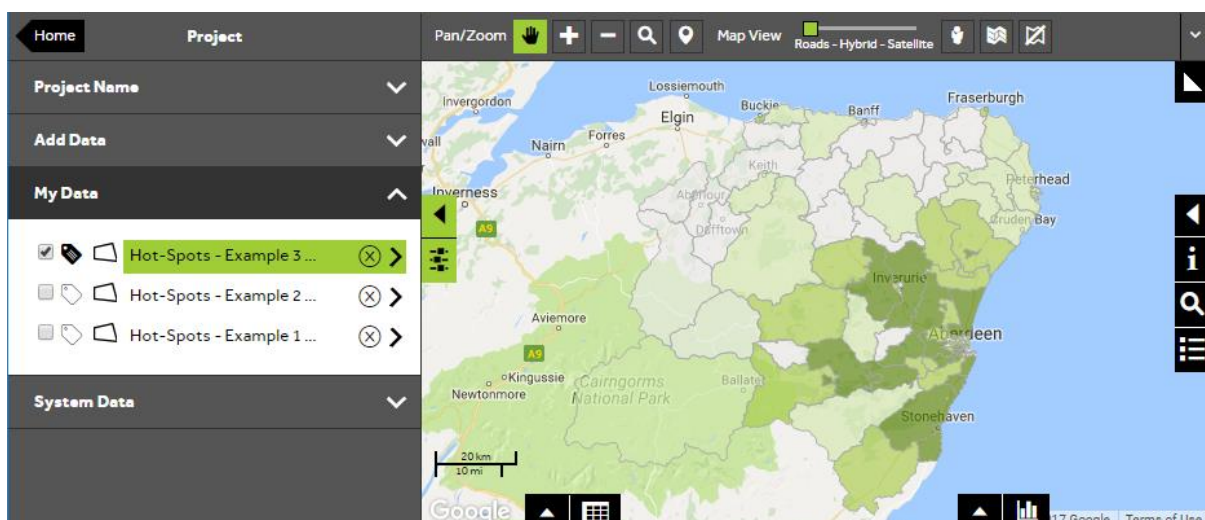
- Hot-Spot Steps - Create Project
- Hot-Spot Steps - Import Data
- Hot-Spot Steps - Add Existing Layer



1 of 5

### Open the Hot-Spot layer

- To export Hot-Spot data from your own layer, **Open an existing project** and then select **My Data**. Click on the layer you wish to export.



2 of 5

## Open the data view

- Within the layer editor panel click on the data grid button to open the **Data View**.

ID	Population	SG_AB	SG_C1	SG_C2	SG_D	SG_E	SG_TOT	H_HOLD
AB10 1	2183	495	610	217	359	325	2006	130
AB10 6	9580	2908	2930	776	933	810	8357	5219
AB10 7	9258	1527	2106	995	1254	1761	7643	4341
AB11 5	1639	282	434	182	352	206	1456	926
AB11 6	7106	1791	2220	752	920	584	6267	4031

3 of 5

## Export the Hot-Spot data

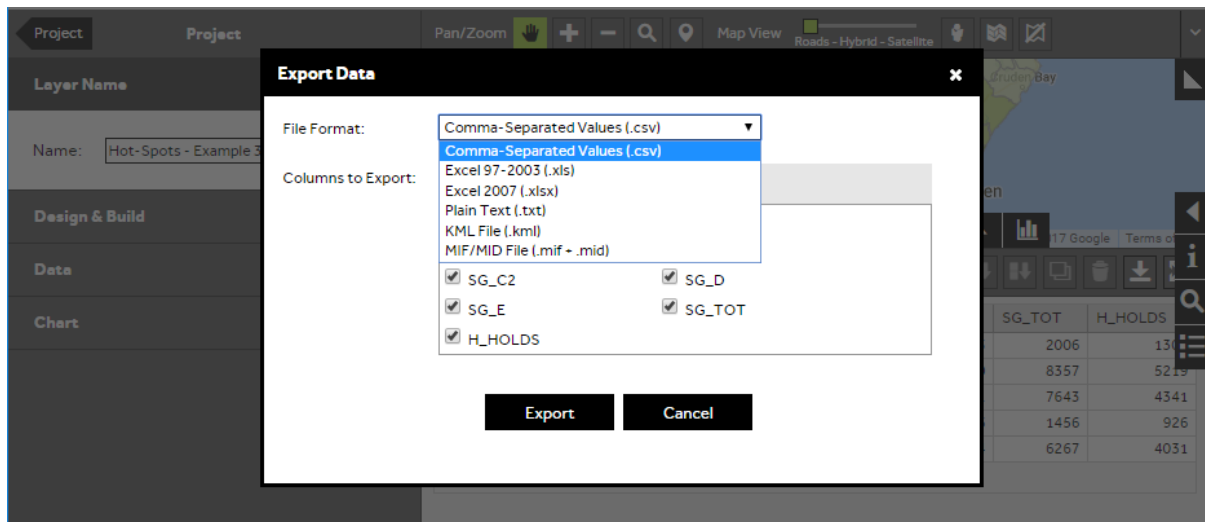
- To open the **Export Data** window click on the **Export** button which can be found on the right hand side at the top of the data view.

ID	Population	SG_AB	SG_C1	SG_C2	SG_D	SG_E	SG_TOT	H_HOLD
AB10 1	2183	495	610	217	359	325	2006	130
AB10 6	9580	2908	2930	776	933	810	8357	5219
AB10 7	9258	1527	2106	995	1254	1761	7643	4341
AB11 5	1639	282	434	182	352	206	1456	926
AB11 6	7106	1791	2220	752	920	584	6267	4031

4 of 5

## Select the file format

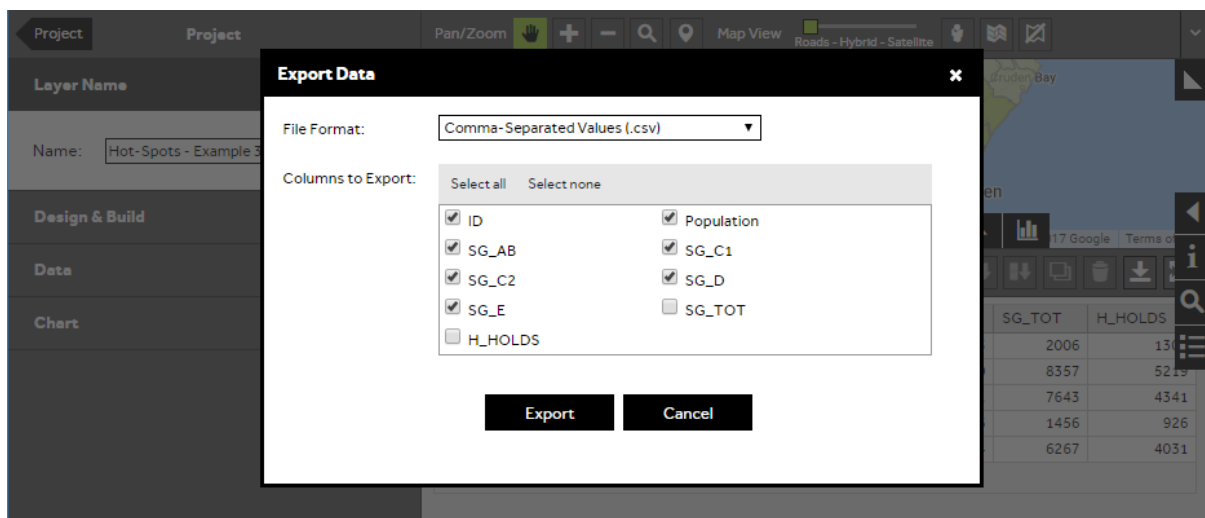
- You can change the **File Format** by clicking in the box and selecting the format that you would like to create.



5 of 5

## Choose which columns to export

- You can choose the columns to include in your export by unticking / ticking the column names in the **Columns to Export** box. You can also **Select all** or **Select None**. Press the **Export** button to create your exported Hot-Spot file.



---

## What do you want to do next?

You may wish to create a snapshot image, print a map or create a report. Please refer to the following sections for further assistance:

- Refer to: **Hot-Spot Steps - Create Output - Snapshot Image**
- Refer to: **Hot-Spot Steps - Create Output - Report**
- Refer to: **Hot-Spot Steps - Create Output – Print (Google)**
- Refer to: **Hot-Spot Steps - Create Output – Print (OSM)**
- Refer to: **Exporting Data** (help guide)
- Contact: **Geoplan Support**