

Copying an existing Map Pins layer

You may have Map Pins layers saved within the SKiN system that you would like to use to map regional trends, for example customer sales data. You can do this using the **Copy Existing Layer** feature with SKiN, which allows you to build a Hot-Spot layer from an existing Map Pins layer. The following instructions will give you a step by step guide on how to add a new Hot-Spot layer from data within an existing Map Pins layer.

Before you begin

Before you start using SKiN you need to ensure you already have data imported into SKiN and saved in another project. If you need assistance getting data into SKiN please refer to the following sections:

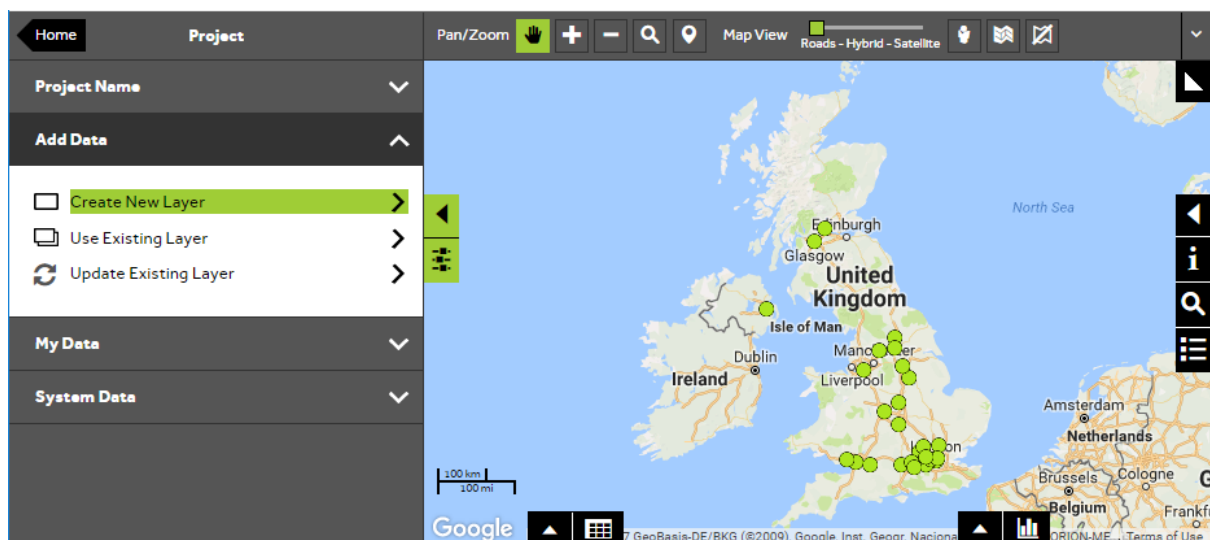
- Hot-Spot Steps - Create Project
- Hot-Spot Steps - Import Data
- Hot-Spot Steps - Add Existing Layer



1 of 5

Copy existing Map Pins layer

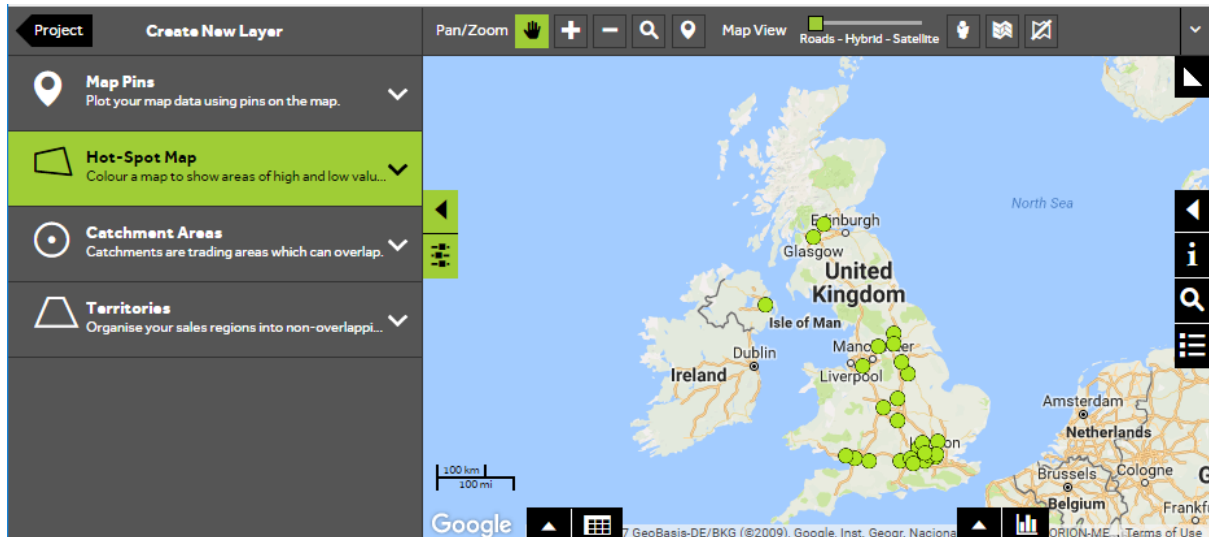
- To create a Hot-Spot layer from an existing Map Pins layer, **Open an existing project** that contains the Map Pins layer that you wish to base the Hot-Spot layer on, and then select **Add Data**, and choose **Create New Layer**.



2 of 5

Choose which type of layer to create

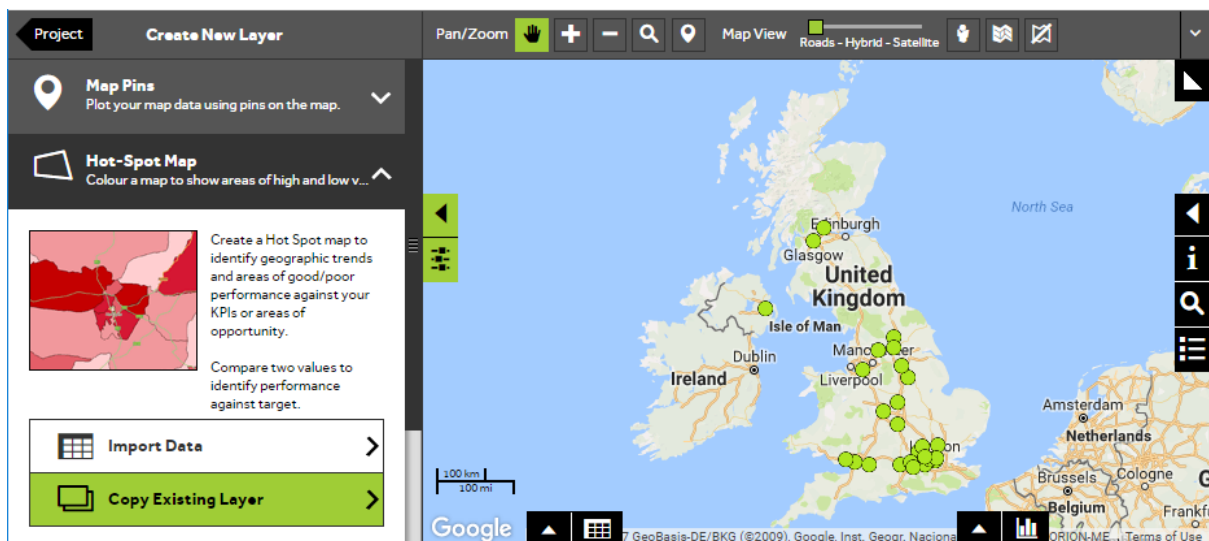
- Select **Hot-Spot Map** to add each of the rows in your data as hotspots on the map.



3 of 5

Copy Existing Layer

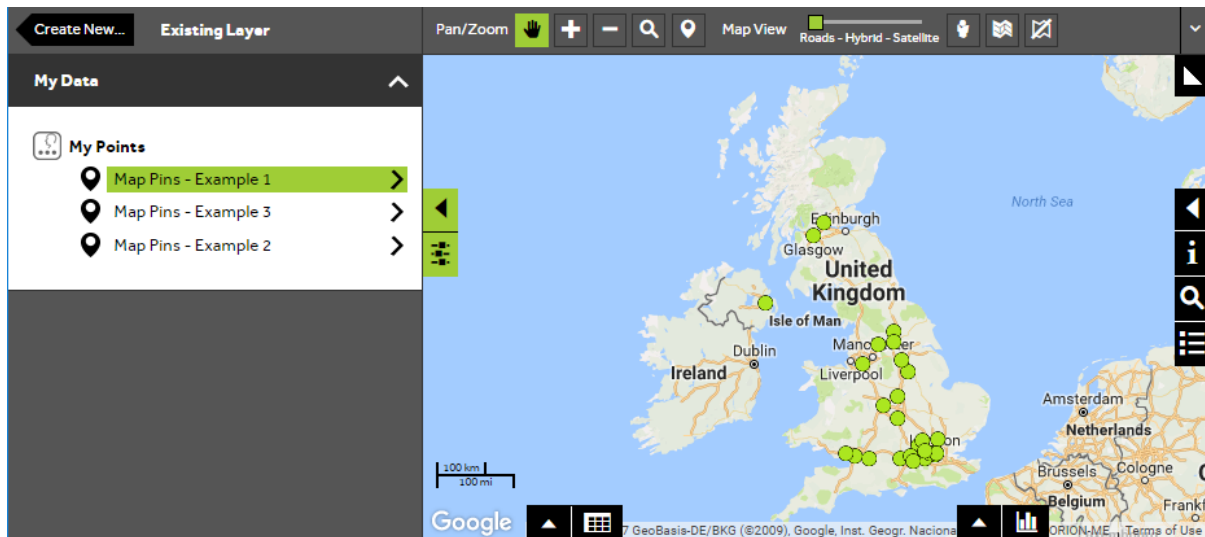
- To add Hot-Spots to the map, you can build a Hot-Spots layer by copying the data from an existing Map Pins layer. Select **Copy Existing Layer** to create a Hot-Spots layer from an existing Map Pins layer.



4 of 5

Choose a Map Pins layer

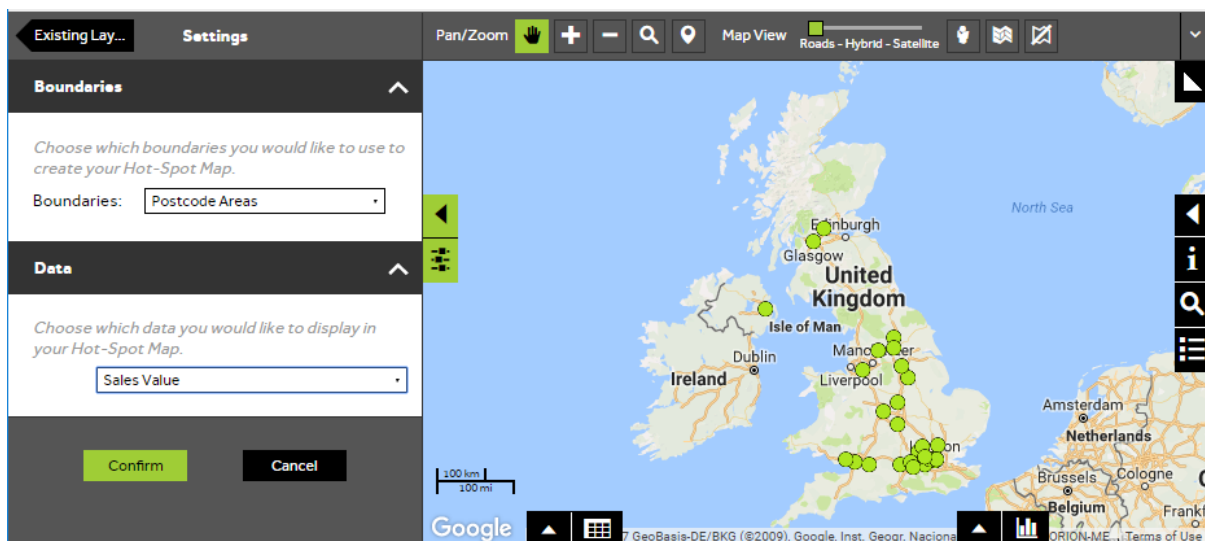
- Select the **Map Pins layer** that contains the data which you wish to create your Hot-Spot layer from.



5 of 5

Choose boundaries and data

- Select the **boundary** which you would like to group your data by. The system will then automatically prompt you to choose which column from your data you would like to use to create the Hot-Spot layer. Select **Confirm** to create the new Hot-Spot layer.



What do you want to do next?

If you don't see the see the Hot-Spots on the map or you would like further assistance. Please review the following information:

- Refer to: **Copy Existing Layer** (Help Guide)
- Refer to: **Hot-Spot Panel** (Help Guide)
- Contact **Geoplan Support**