

Finding out what features fall within your Catchments

Once you have Catchments added as a layer to your project there are several tools that are available within the **Catchments Panel** that allow further analysis to be carried out. The following instructions will give you a step-by-step guide on how to identify which features from other layers fall within your Catchment areas, using the **What's In My Catchments?** tool.

Before you begin

Before you start using the Catchment analysis tools make sure that you have the data set up in a saved project. If you need assistance getting the data into SKiN please refer to the following sections:

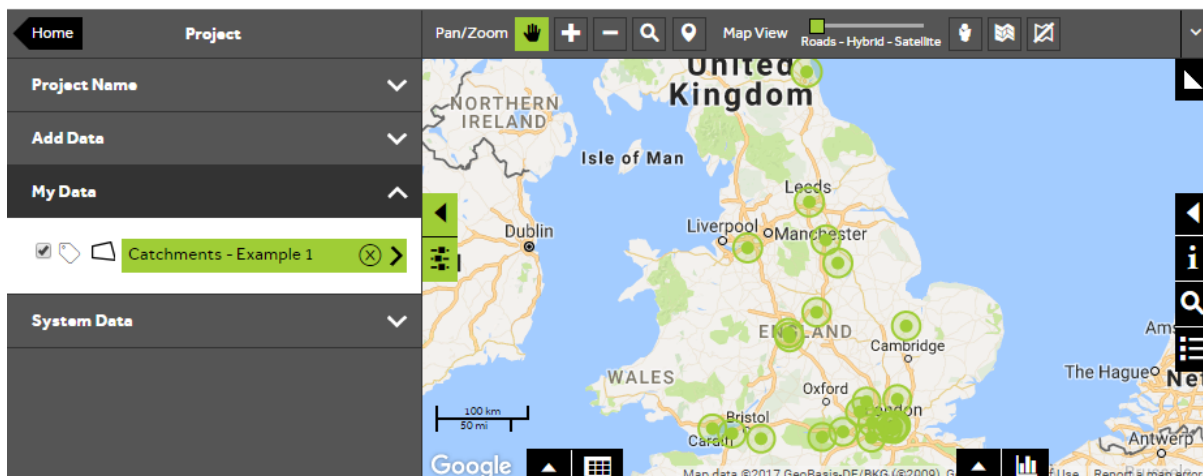
- Catchments Steps – Create Project
- Catchments Steps – Import Data
- Catchments Steps – Create Radial Catchments



1 of 7

Access the Catchment layer tools

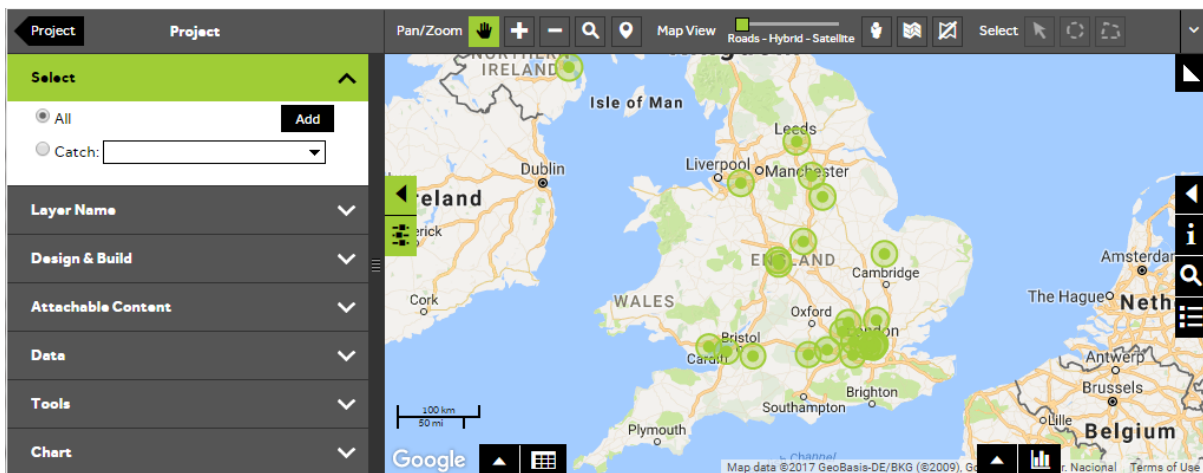
- To access the **Catchment Tools** to analyse your own Catchment layer, **Open an existing project** and then select **My Data**, click on the Catchment layer you wish to analyse.



2 of 7

Select Catchments to look at

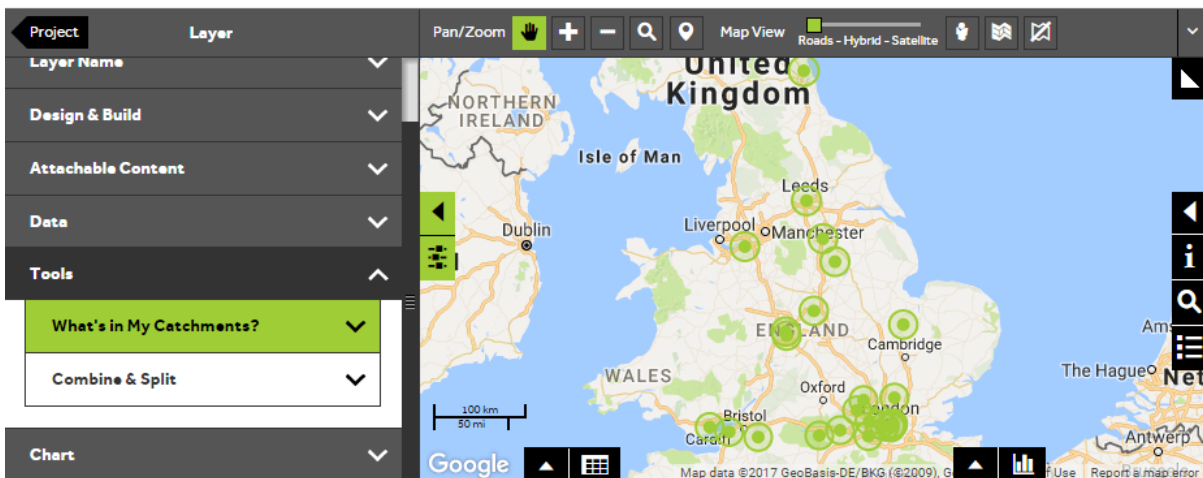
- In the **Select** section of the panel, you can control whether to look at all Catchments in the layer or just a single Catchment. If you want to run the **What's In My Catchments?** process on all Catchments, make sure that the **All** button is selected. To select an individual Catchment, click on the **Catch** button, then start to type the Catchment Identifier in the text box and select the required Catchment from the drop down list.



3 of 7

Open the What's in My Catchments? tool

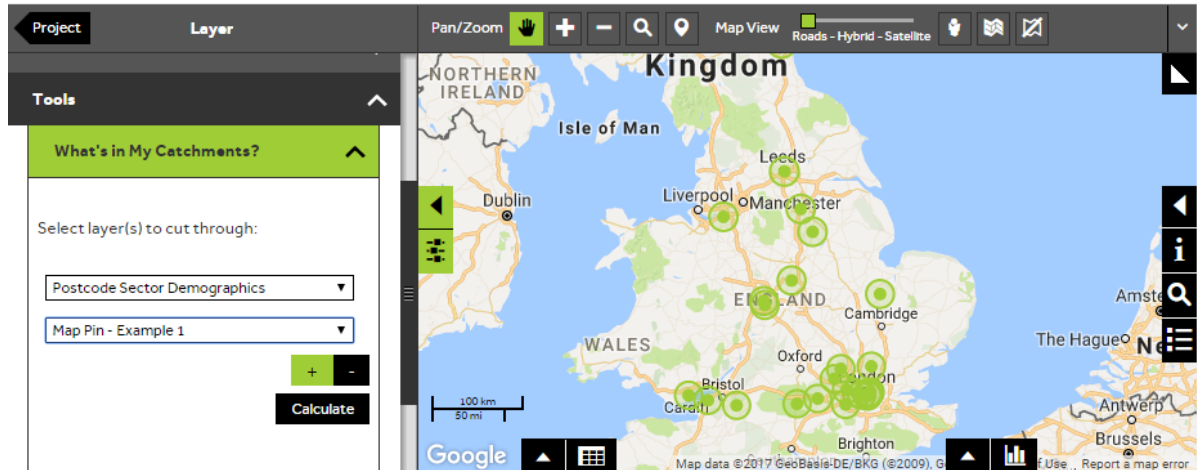
- To open the 'What's in My Catchments?' tool, open the **Tools** section and select **What's in My Catchments?**



4 of 7

Select the layers to investigate

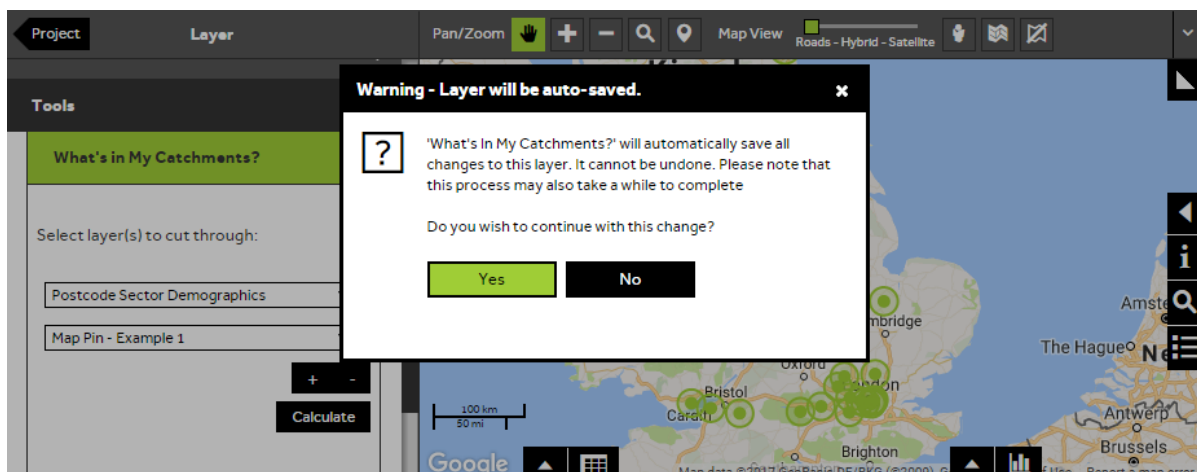
- Click on the dropdown box to select a layer. You can add up to **5** layers at a time by pressing the **+** button. If you need to remove one of the layers press the **-** button. Once you have selected the required layers press **Calculate**.



5 of 7

Agree to save changes to your Catchments layer

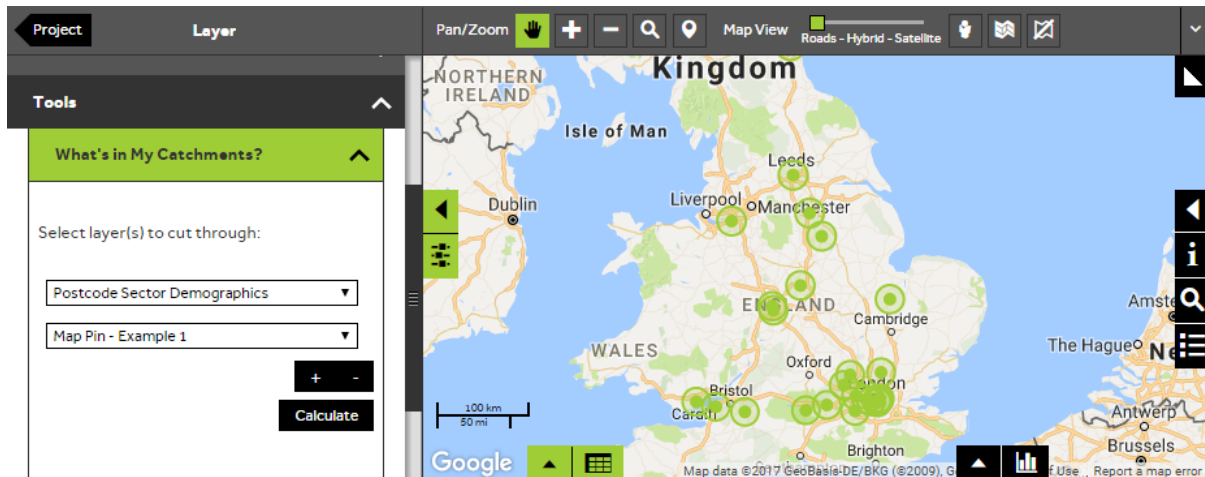
- A message will be shown to warn you that the process may take a while to complete and that the changes will be saved to the layer. Press **Yes** to continue.



6 of 7

Open the data grid

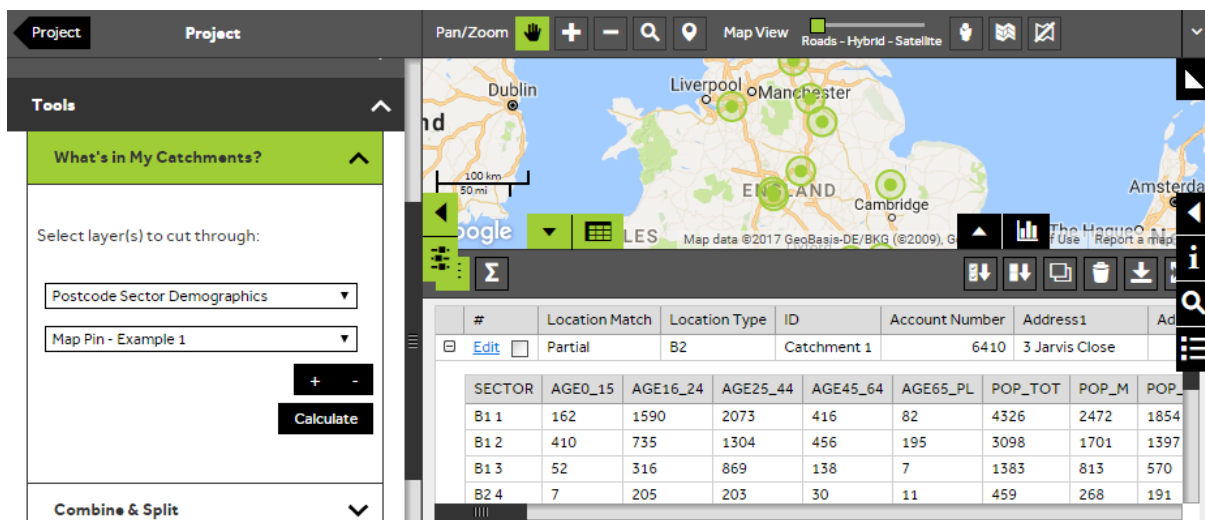
- After clicking **Calculate**, the system will use your Catchment areas to 'cut through' the layers you have selected and find out what falls within each Catchment area. To view the results, click on the **Data View** icon at the bottom left of the map.



7 of 7

View the results of the 'What's in My Catchments?' process

- You will see a list of all your Catchments and the data associated with them. To view which features fall into a Catchment, click on the **+** button which can be found on the left hand side of your Catchment's details. To close this detailed level, press the **-** button.



What do you want to do next?

You may wish to export the data view to a file or create a report, please refer to the following sections for further assistance:

- Refer to: **Catchments Steps – Create Output - Report**
- Refer to: **Catchments Steps – Create Output - Export**
- Contact: **Geoplan Support**