

Changing the visibility level of Catchments

Once you have Catchments added as a layer to your project you can use the **Catchments Panel** to control the appearance of the layer, as well as the data associated with it. The following instructions will give you a step-by-step guide on how to specify at what point your Catchments are displayed as you zoom in and out of the map. This is useful for large or detailed data sets that are not easy to interpret until you zoom in.

Before you begin

Before you start styling your Catchments, make sure that you have your data set up in a saved project. If you need assistance getting the data into SKiN please refer to the following sections:

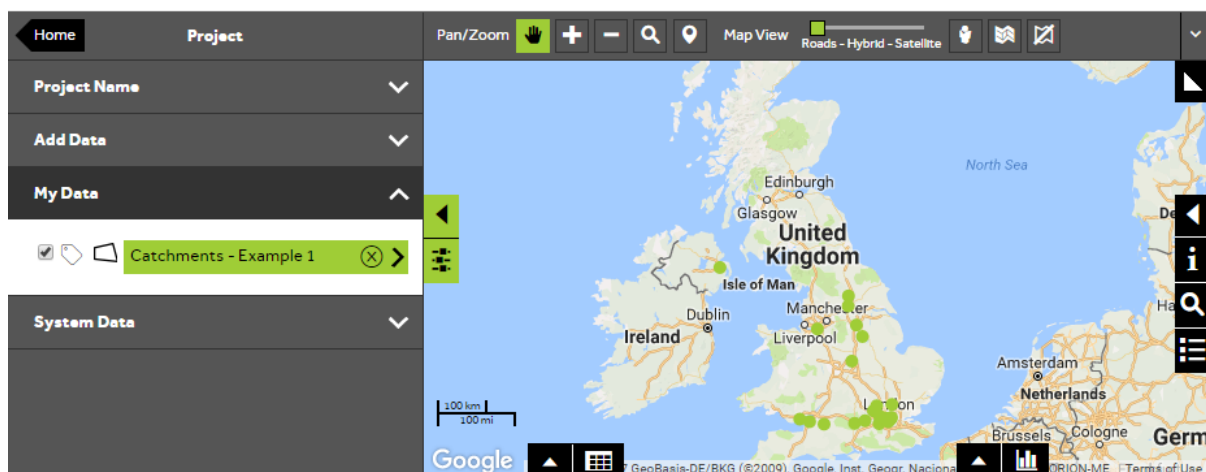
- Catchments Steps - Create Project
- Catchments Steps - Import Data



1 of 4

Style a Catchments layer

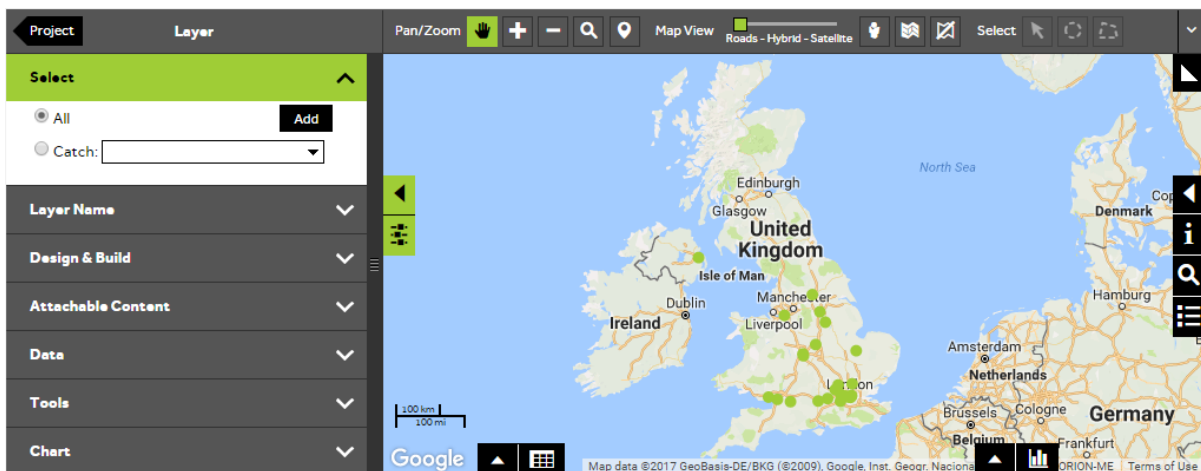
- To style your own data, **Open an existing project** and then select **My Data**, click on the Catchment layer you wish to style.



2 of 4

Select Catchments to update

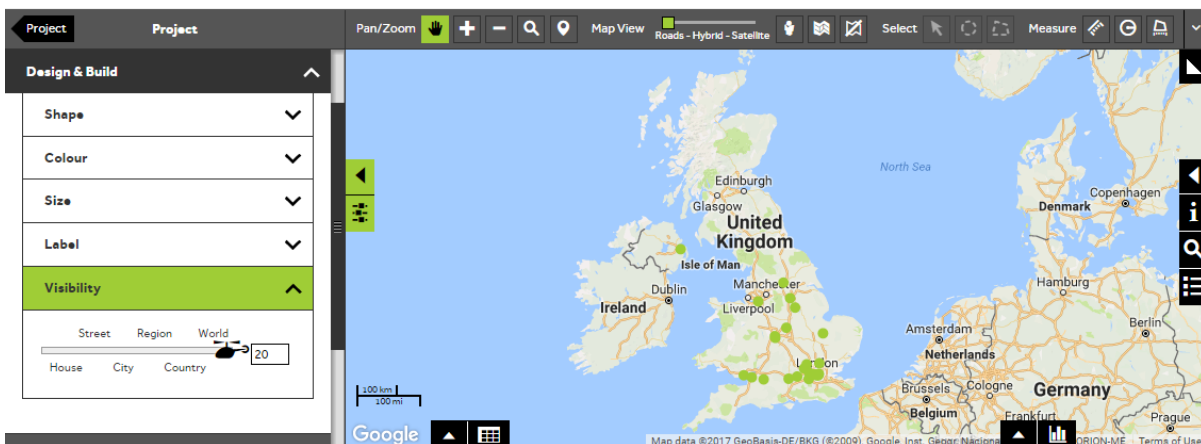
- In the **Select** section of the panel, you can control whether to update all Catchments in the layer or just a single Catchment. To update all Catchments, make sure that the **All** button is selected. To select an individual Catchment, click on the **Catch** button, then start to type the Catchment Identifier in the text box and select the required Catchment from the drop down list.



3 of 4

Select the visibility panel

- Within the layer editor panel select **Design and Build**, from here you can control how the Catchments are displayed. Expand the **Visibility** section to control the zoom level at which your Catchments are displayed.

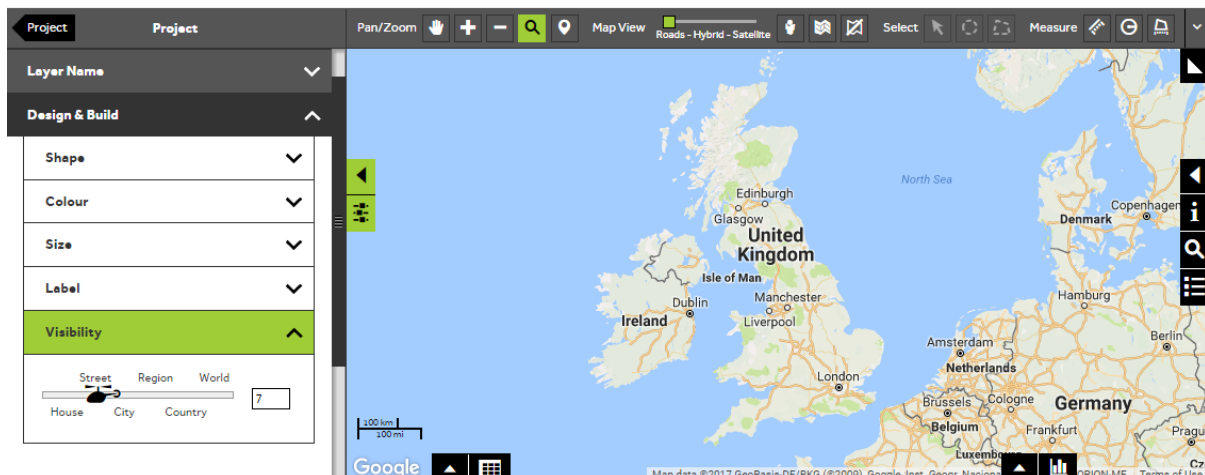


4 of 4

Select visibility level

- Initially all layers are set to the visibility level **World** which means that the Catchments in your layer will be visible regardless of the zoom level. To change the maximum visibility level click and drag the slider or type a value between 1 and 20 in the number box. A value of 20 means that the layer will be visible at all levels and a value of 1 means that the layer will only be displayed at very zoomed in levels.

After changing the visibility level you may find that your Catchments are no longer visible on the map. To display your Catchments again, you will need to click on the **Zoom tool** which can be found above the map and zoom into the level that you have setup for your layer.



What do you want to do next?

You may wish to change the size or colour of your Catchments, please refer to the following sections for further assistance:

- Refer to: **Catchments Steps – Create Radial Catchments**
- Refer to: **Catchments Steps – Style Layer - Colour**
- Contact: **Geoplan Support**