

## Using the Select Tool

The **Select tools** allow you to highlight features on the map and see the data associated with them. The following instructions will give you a step-by-step guide on how to use the select tool.

### Before you Begin

Before you can use the select tools within SKiN, make sure that you have your data set up in a saved project. If you need assistance getting the data into SKiN please refer to the following sections:

- Catchments Steps - Create Project
- Catchments Steps - Manually Add Data
- Catchments Steps - Import Data
- Catchments Steps - Add Existing Layer



1 of 5

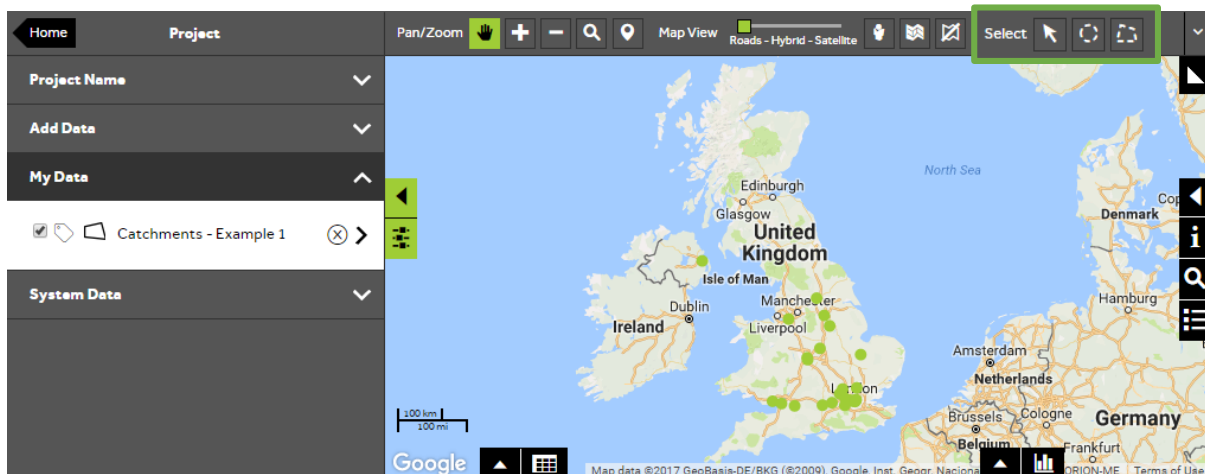
### Access the Select tools

- To access the **Selection** tools you must be at **Project level** and not Layer level. The header at the top of the left hand panel will indicate the level. If it shows **Layer**, click on the **Project** arrow to return to Project level. There are 3 tools that you can use to select data from the map:

**Single Select** – Select a single feature on the map.

**Radial Select** – Click and drag to draw a radius around a set of features.

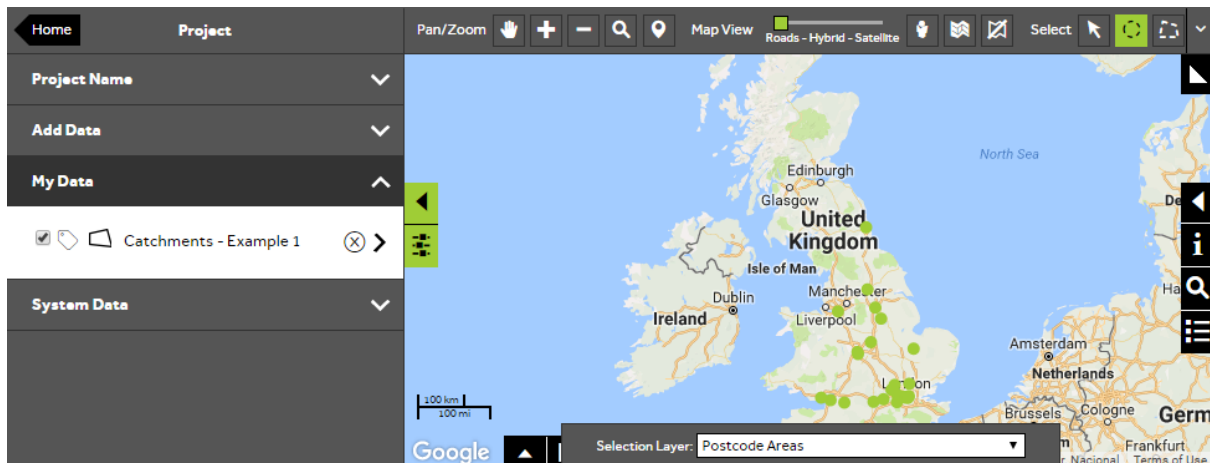
**Area Select** – Click and drag to draw a specific area on the map.



2 of 5

## Choose a Select tool

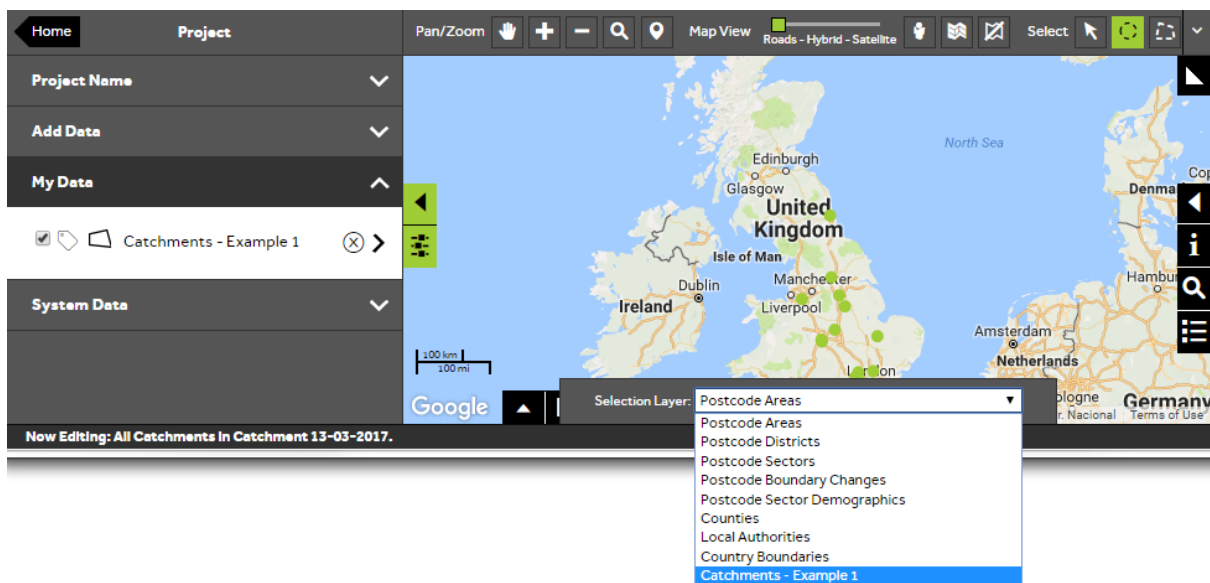
- Click on one of the selection tools such as the **Drag a radius** tool. The **Selection Layer** option will display at the bottom of the screen.



3 of 5

## Choose which layer to select

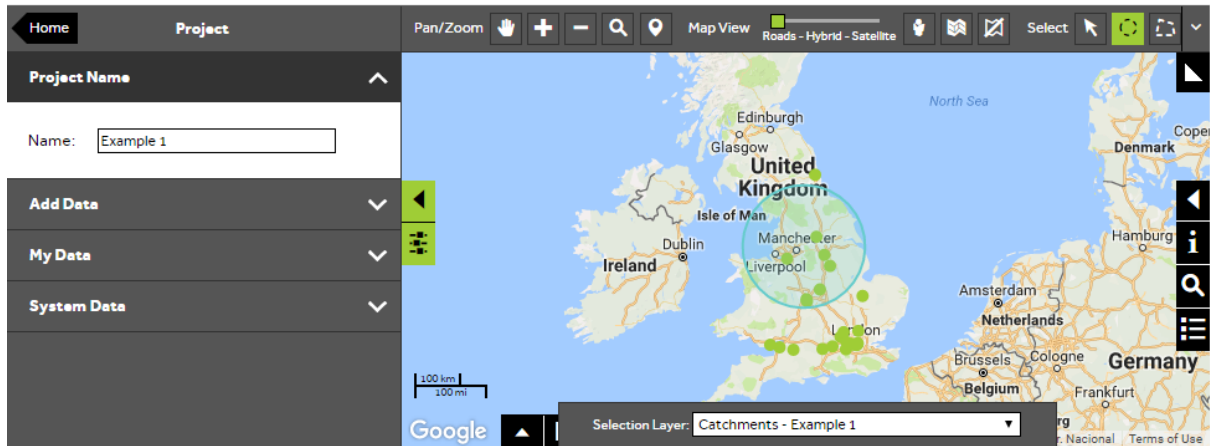
- Use the dropdown from the **Selection Layer** box and select the layer you wish to use. The layer options will be all of the system data layers and any my data layers within the project.



4 of 5

## Draw a selection on the map

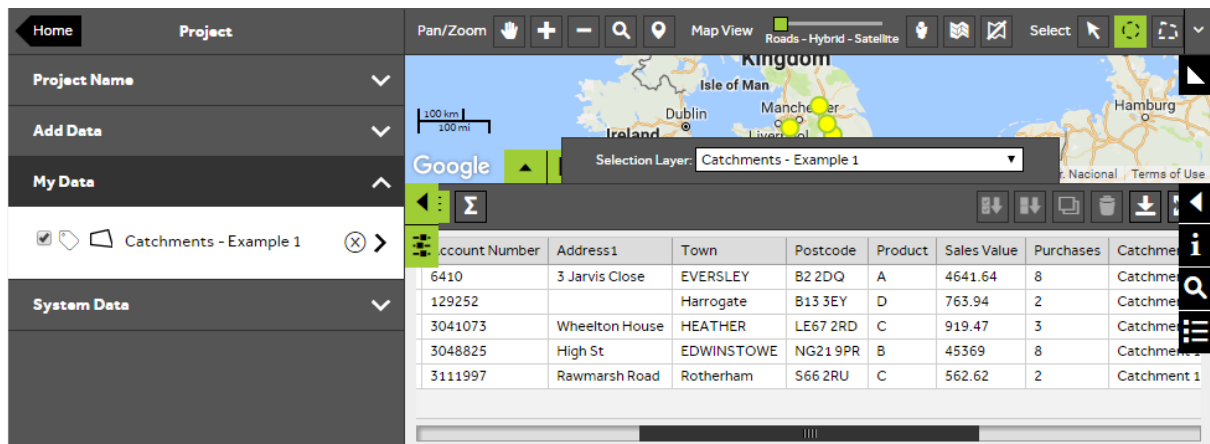
- Once the selection layer has been chosen, draw around the area of interest on the map.



5 of 5

## Open data view to see selected features

- After selecting the area, the data view will automatically open and show the data associated with the selected features.



---

## What would you like to do next?

If you would like further ideas on how to use your data within SKiN please refer to the following sections:

- Watch a video on: **Exporting data from a layer to a file**
- Refer to: **Catchments Steps - Create Output - Report**
- Contact: **Geoplan Support**