

Analysing the impact of overlaps with a Catchment

Once you have Catchments added as a layer to your project there are several tools that are available within the **Catchments Panel** that allow further analysis to be carried out. The following instructions will give you a step-by-step guide on how to identify areas that overlap a particular Catchment that you are looking at and the impact of the overlap.

Before you begin

Before you start using the Catchment analysis tools make sure that you have the data set up in a saved project. If you need assistance getting the data into SKiN please refer to the following sections:

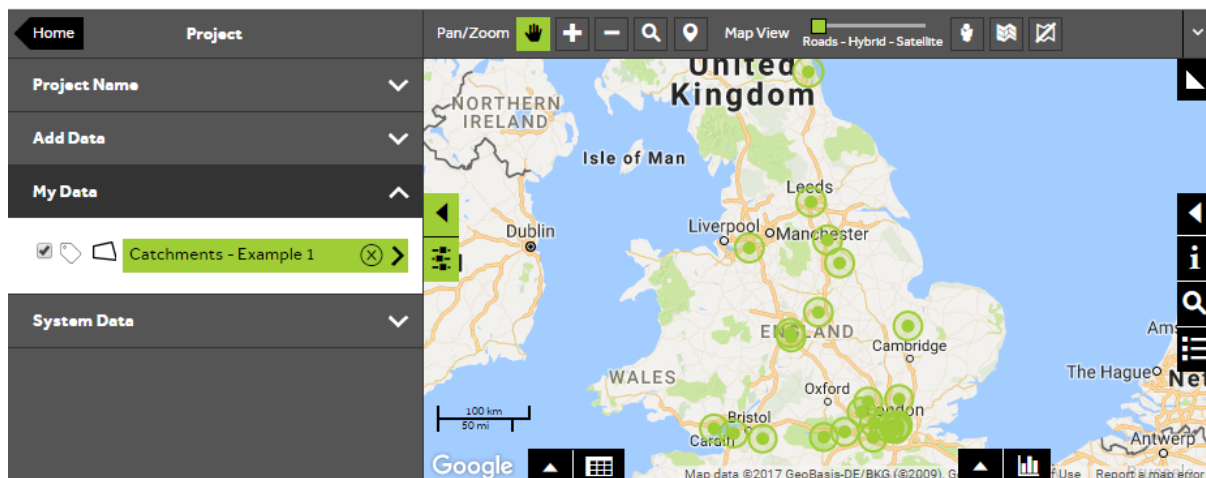
- Catchments Steps - Create Project
- Catchments Steps - Import Data
- Catchments Steps - Create Radial Catchment



1 of 5

Select the Catchment layer to analyse

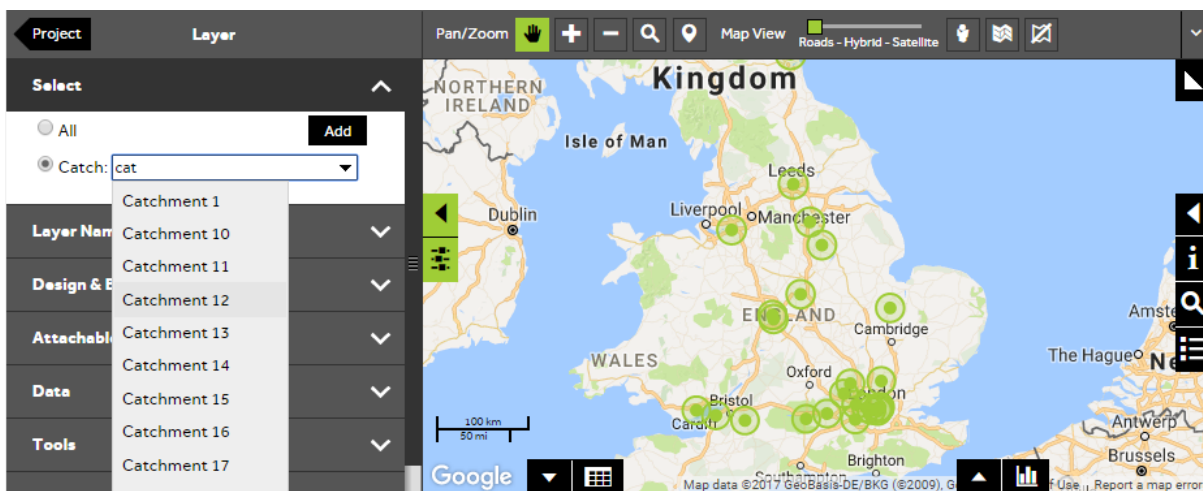
- To analyse your own Catchment layer, **Open an existing project** and then select **My Data**, click on the Catchment layer you wish to analyse.



2 of 5

Select a Catchment

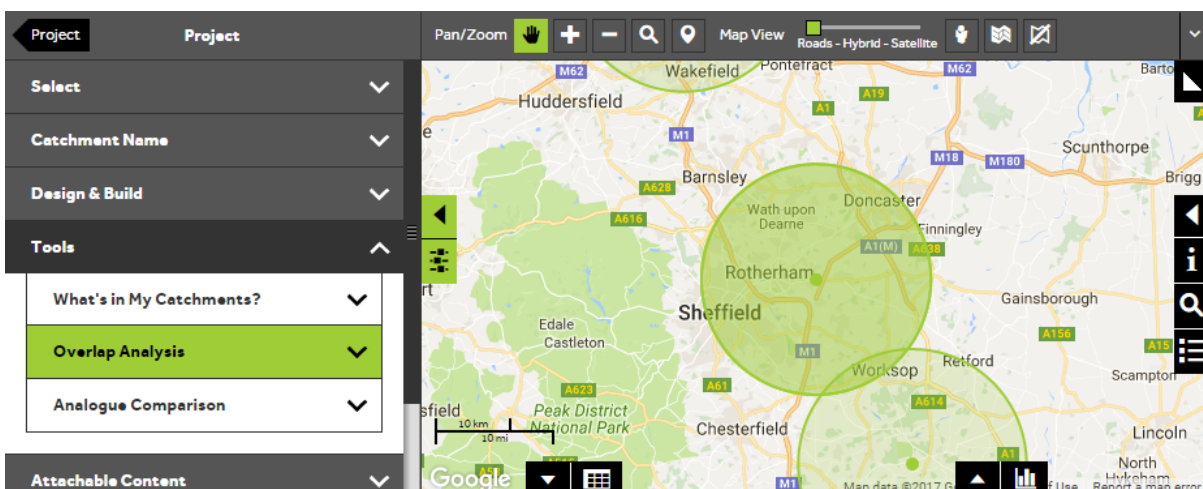
- To look at the areas which overlap with a particular Catchment, you firstly need to select the Catchment you want to look at. Open the **Select** section, click on the button next to **Catch** and start typing the first few letters of your Catchment identifier in the box. When you can see the required Catchment in the dropdown list, click on it to select it.



3 of 5

Access the Overlap Analysis tool

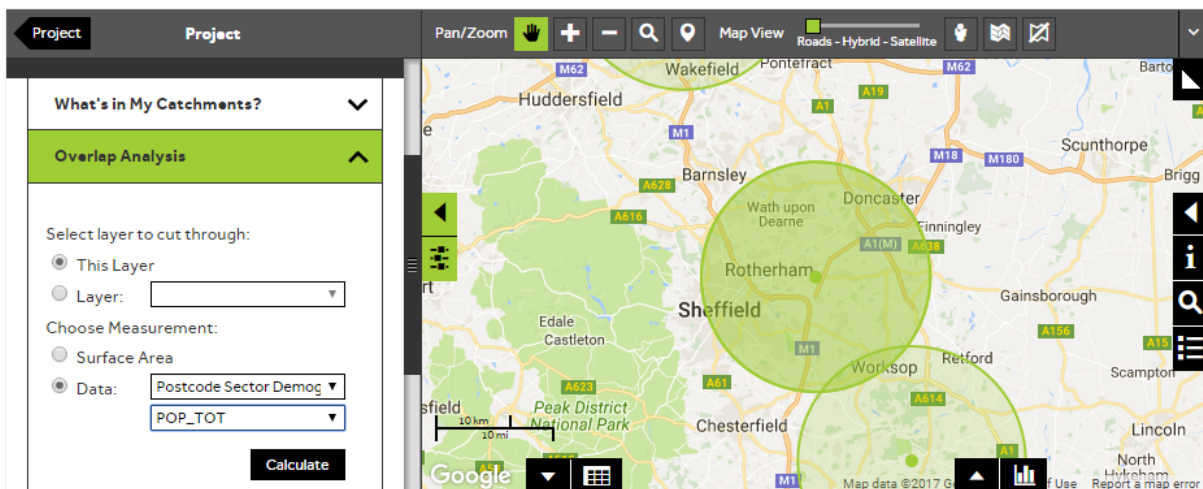
- To select the overlap analysis tool, open the **Tools** section and select **Overlap Analysis**.



4 of 5

Compare your Catchment

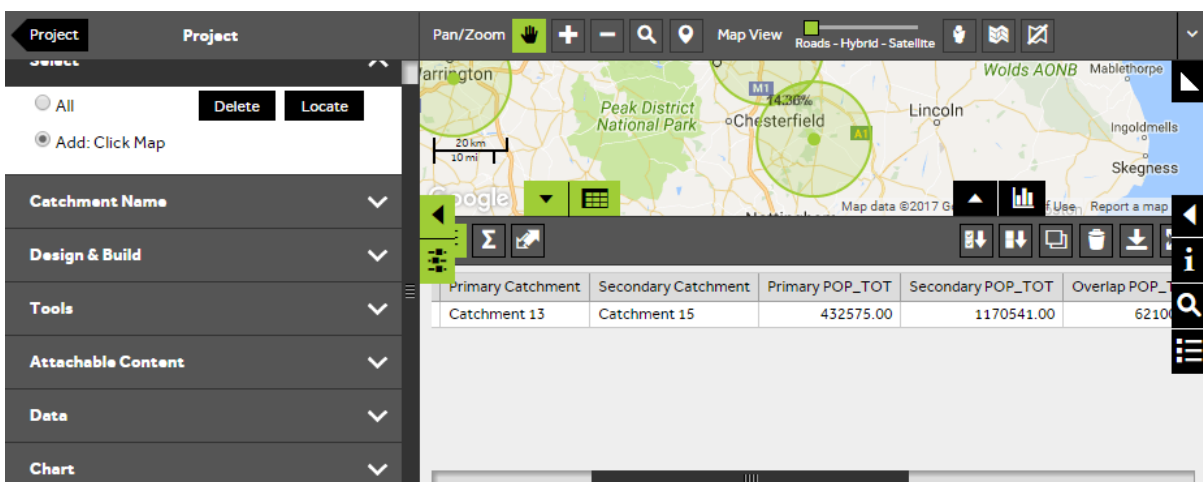
- You can either compare your selected Catchment to other Catchment areas in the same layer or you can compare against Catchment areas in a separate layer. To measure the impact of the overlap, you can either consider the **Surface Area** that is overlapping or you can measure the overlap using **Data** such as population. Select the required options and then press **Calculate**.



5 of 5

Analyse the overlap results

- After clicking **Calculate**, the system will create a new overlap layer which has a row in the **Data View** for each Catchment that the selected Catchment overlapped with. Each overlap will show the **Primary Catchment** (your original selected Catchment), the **Secondary Catchment** (what your Catchment overlapped with) and the data associated with the Catchments and the overlap.



What do you want to do next?

You may wish to change the colour of the overlap layer so that it can be easily identified on the map, or you may wish to find out what features fall into your Catchments. Please refer to the following sections for further assistance:

- Refer to: **Catchments Steps - Style Layer - Colour**
- Refer to: **Catchments Steps - What's in My Catchments?**
- Contact: **Geoplan Support**