

Using the Info tool

The **Info tool** can be accessed by clicking the **i** button to open the **Info Panel**. The following instructions will give you a step-by-step guide on how to use the info tool.

Before you begin

Before you can use the Info tool within SKiN, make sure that you have your data set up in a saved project. If you need assistance getting the data into SKiN please refer to the following sections:

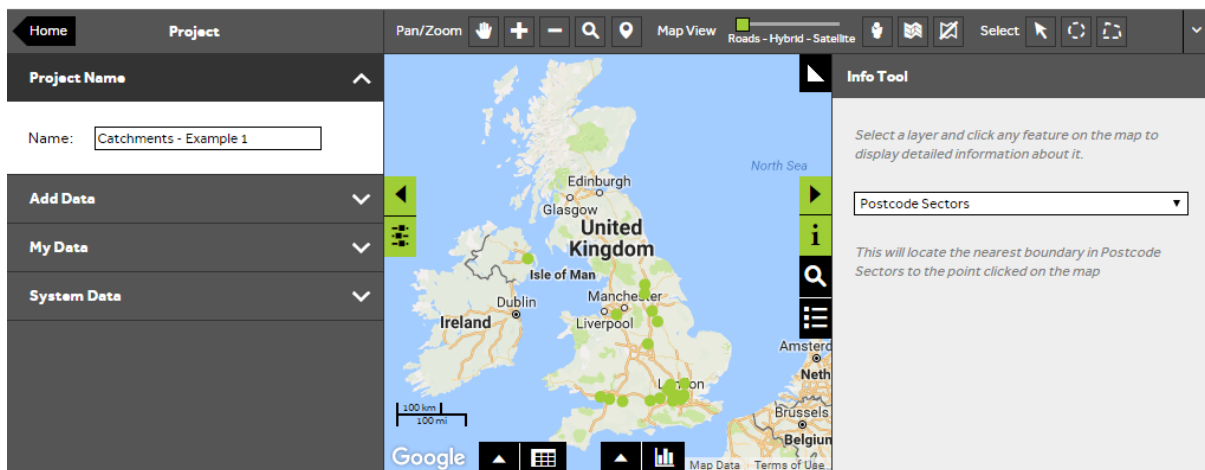
- Catchments Steps - Create Project
- Catchments Steps - Import Data



1 of 3

Open the Info tool

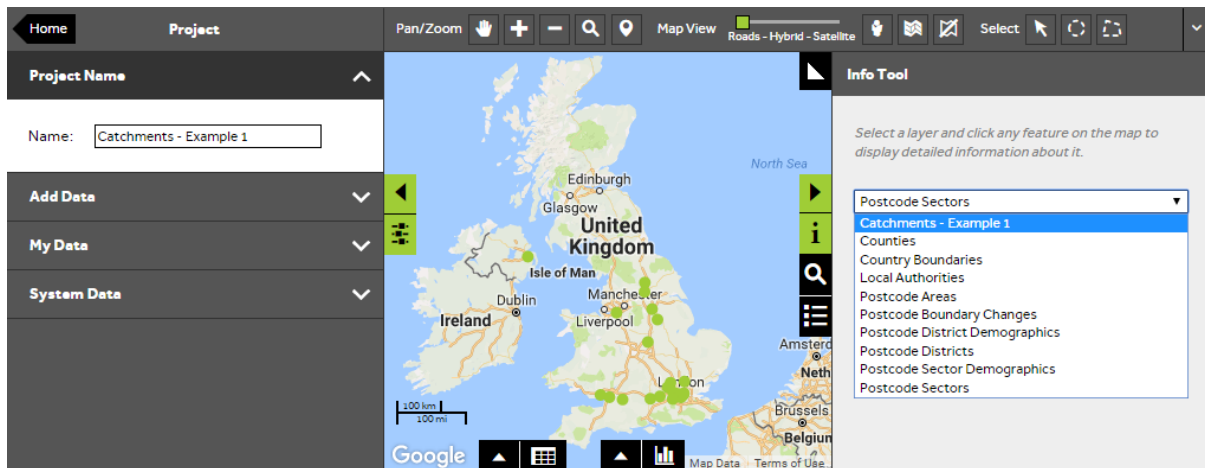
- To find information about Catchments on the map, **Open an existing project** and then select the **Info Tool [i]** to the right of the map. The info panel will appear.



2 of 3

Select the layer

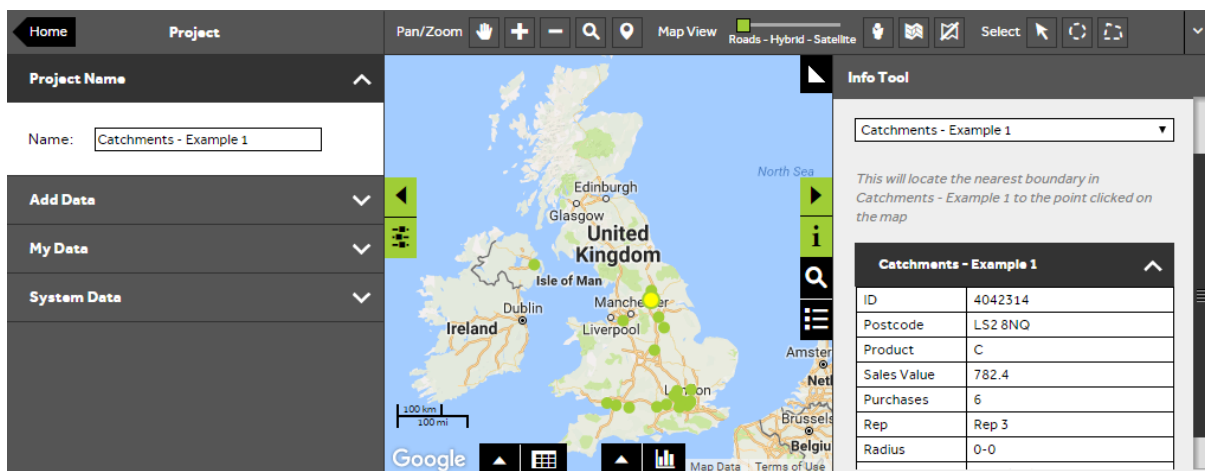
- From the **Info panel**, you can select any My Data or System Data layer from your project using the info tool dropdown box. Select the layer you would like to interrogate from the list.



3 of 3

Select a feature on the map

- Click on a feature on the map within the layer you have selected, to reveal the details associated with it.



What do you want to do next?

You may wish to change the size or colour of your Catchments based on a particular category within your data. Please refer to the following sections for further assistance:

- Refer to: **Catchments Steps - Create Radial Catchment**
- Refer to: **Catchments Steps - Create Traveltime Catchment**
- Refer to: **Catchments Steps - Style Layer - Colour**
- Contact: **Geoplan Support**