

## Filtering Catchments

Once you have Catchments added as a layer to your project you can use the **Catchments Panel** to control the appearance of the layer, as well as the data associated with it. The following instructions will give you a step-by-step guide on how to filter the map and data within SKiN.

### Before you Begin

Before you start filtering your Catchments make sure that you have the data set up in a saved project. If you need assistance getting the data into SKiN please refer to the following sections:

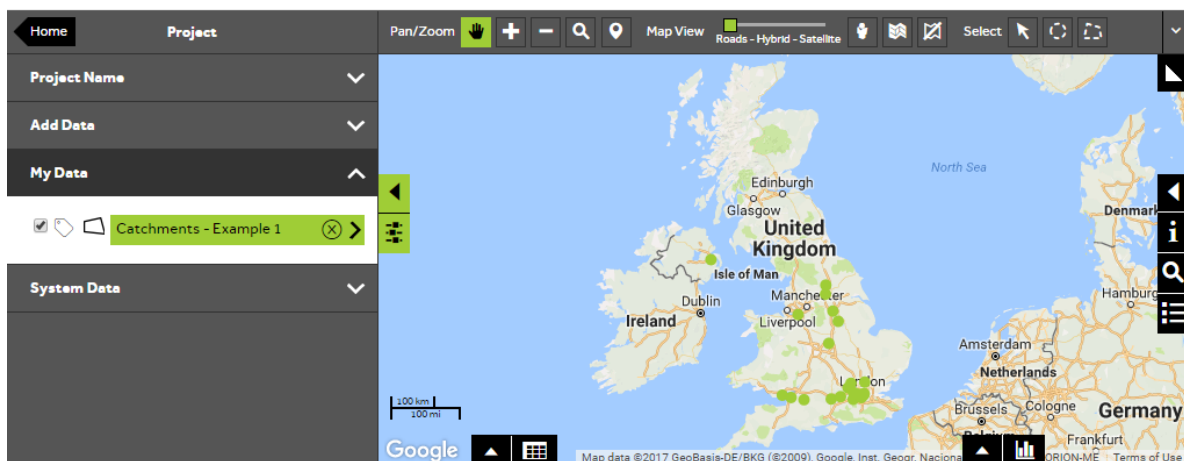
- Catchment Steps - Create Project
- Catchment Steps - Import Data



1 of 6

### Filter a Catchment layer

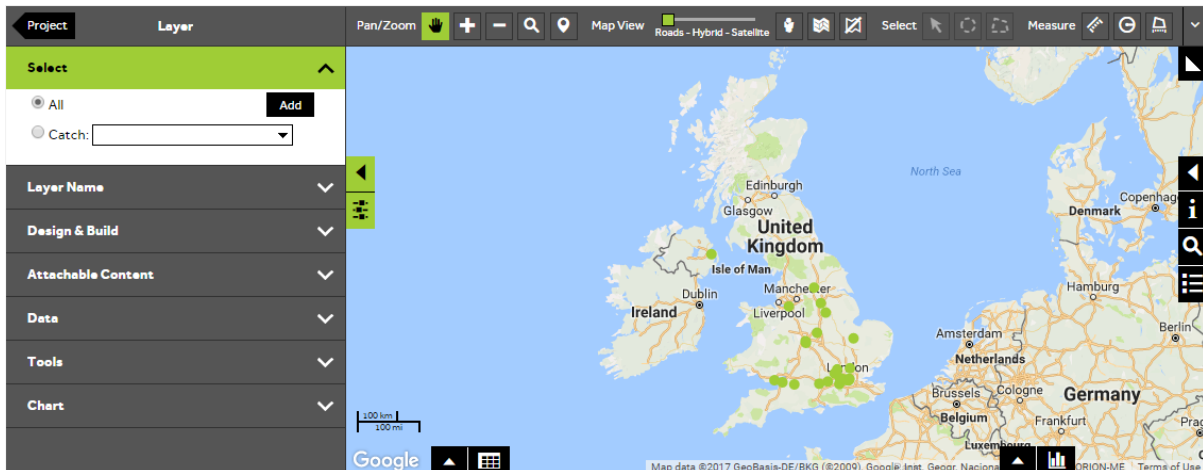
- To filter your own data, **Open an existing project** and then **My Data**, click on the layer you wish to filter.



2 of 6

## Select all Catchments

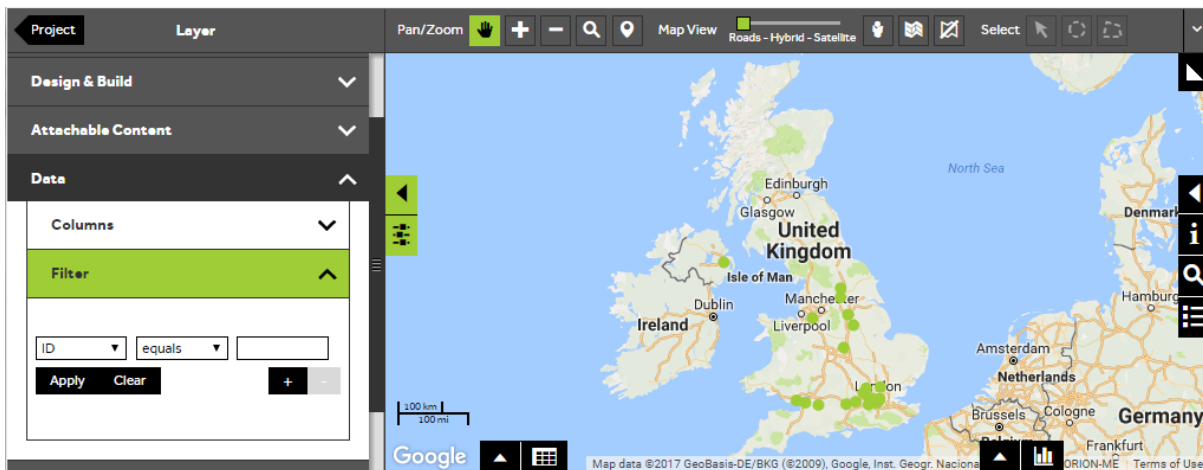
- To filter your data you need to firstly make sure that all Catchments are selected. Open the **Select** section of the panel and click on the **All** button if this is not currently selected.



3 of 6

## Open the filter tool

- Within the layer editor panel select **Data**, from here you can control the data associated with your Catchments, expand the **Filter** selection panel.



4 of 6

## Apply a filter

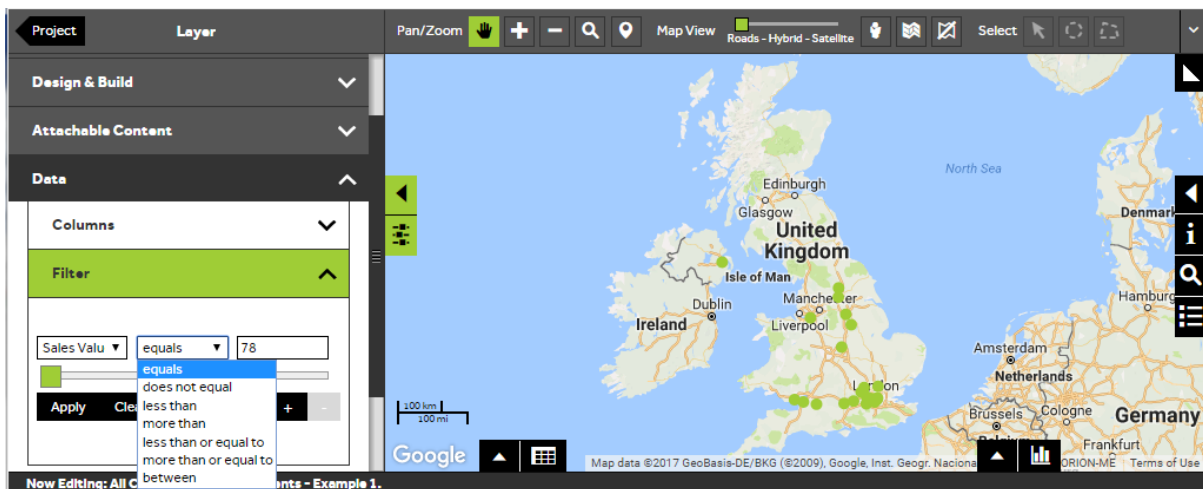
- To apply a filter to your Catchments layer based on a column within your data choose the following:

**Column** - select the column you wish to filter from the first dropdown box.

**Operation** - select the type of filter operation you wish to apply. The operation options you have vary depending on the data type of the column that you have selected.

**Value** - Enter a value to base your filter on. If your column is character you can start to type the first few letters of the required filter and then select an option from the dropdown list. If your column is numeric you can use the slider to select a value or type a value into the text box. If your column is a date, a calendar will be displayed when you click in the value box so that you can select a date.

- Click **Apply** once you have created your filter, then the map and the data view will automatically update. To check the features that match the filter criteria open the **Data View** by clicking on the data grid button at the bottom left of the map.



5 of 6

## Create additional filters

- You can add up to **5** filter criteria by pressing the **+** button and selecting an **AND** or **OR** operator from the dropdown box to combine the filters. Press **Apply** to apply the filter and show the results in the data view and on the map. To remove a filter line press the **-** button. To clear the filter so that all records are selected again, press the **Clear** button.

The screenshot shows the 'Project' panel on the left with a 'Filter' section. It contains three filter criteria: 'Sales Value' (more than 1000), 'Purchases' (less than 5), and 'Postcode' (starts with bt). The 'AND' operator is selected. Below the filters are 'Apply', 'Clear', and '+' buttons. The main map area shows a map of the UK with green catchment areas. Below the map is a data table with the following content:

#	Location Match	ID	Ref	Surname	Address 1	Address 2	Postcode	Eastings
<a href="#">Edit</a>	Matched	Irena	12	Verduzco	Marketing Services	40/42 Campus Road	BT78 4BZ	54873
<a href="#">Edit</a>	Matched	Cassie	99	Waring	Queen Mary's University Hospital	Roehampton Disability Centre	YO32 5ZY	464094
<a href="#">Edit</a>	Matched	Lianne	55	Combest	West End Lane	Esher	LS16 7AF	426376
<a href="#">Edit</a>	Matched	Scott	53	Mcgirt	9 University House	Ealing Green	LE65 2TT	433582
<a href="#">Edit</a>	Matched	Jeannie	52	Maki	Park Hall Rd	Dulwich	LE48GH	461308

Page 1 of 4 (16 items)

6 of 6

## Filter layer indicator

- If you press the **Project** arrow to return to the **Project Panel**, and open the **My Data** section, there will be a **Filter** icon next to any layer that has a filter applied to it. This is a useful reminder if you save your project and open it at a later date.

The screenshot shows the 'Project' panel on the left with sections for 'Project Name', 'Add Data', 'My Data', and 'System Data'. Under 'My Data', there is a layer named 'Catchments - Exam...' with a green filter icon next to it. The main map area shows a map of the UK with green catchment areas. The 'Project' button is highlighted in the top left corner of the map area.

---

## What do you want to do next?

You may wish to change the size or colour of the Catchments based on a particular category within your data, please refer to the following sections for further assistance:

- Refer to: **Catchments Steps - Create Radial Catchment**
- Refer to: **Catchments Steps - Style Layer - Colour**
- Contact: **Geoplan Support**