

## Editing Catchments data

Once you have Catchments added as a layer to your project you can use the **Catchments Panel** to control the appearance of the layer, as well as the data associated with it. The following instructions will give you a step-by-step guide on how to edit data within SKiN.

### Before you Begin

Before you start editing data associated with your Catchments make sure that you have the data set up in a saved project. If you need assistance getting the data into SKiN please refer to the following sections:

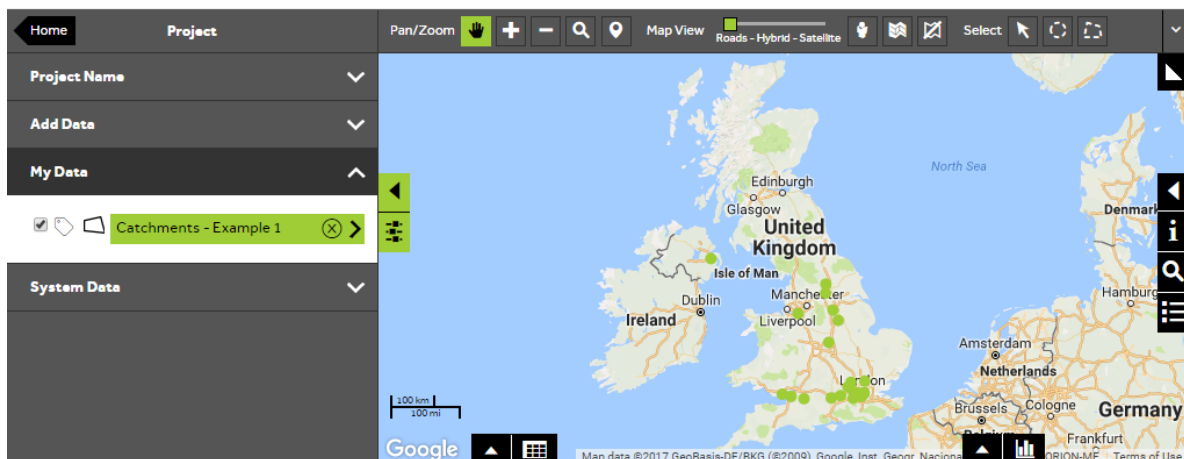
- Catchments Steps - Create Project
- Catchments Steps - Import Data



1 of 6

### Select a Catchments layer

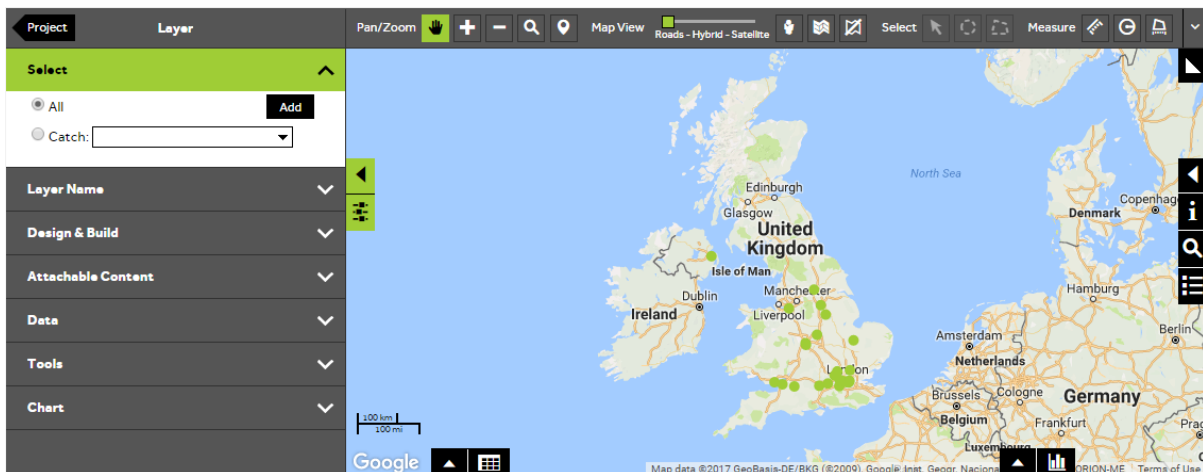
- To edit your own data, **Open an existing project** and then select **My Data**. Click on the layer you wish to change.



2 of 6

## Select all Catchments

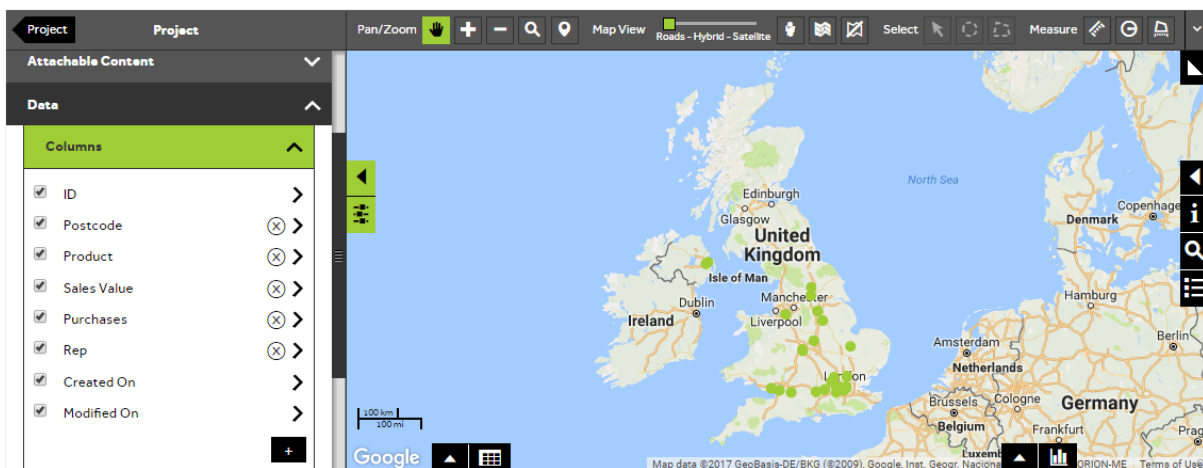
- To edit data columns you need to firstly make sure that all Catchments are selected. Open the **Select** section of the panel and click on the **All** button if this is not currently selected.



3 of 6

## Select the Columns panel

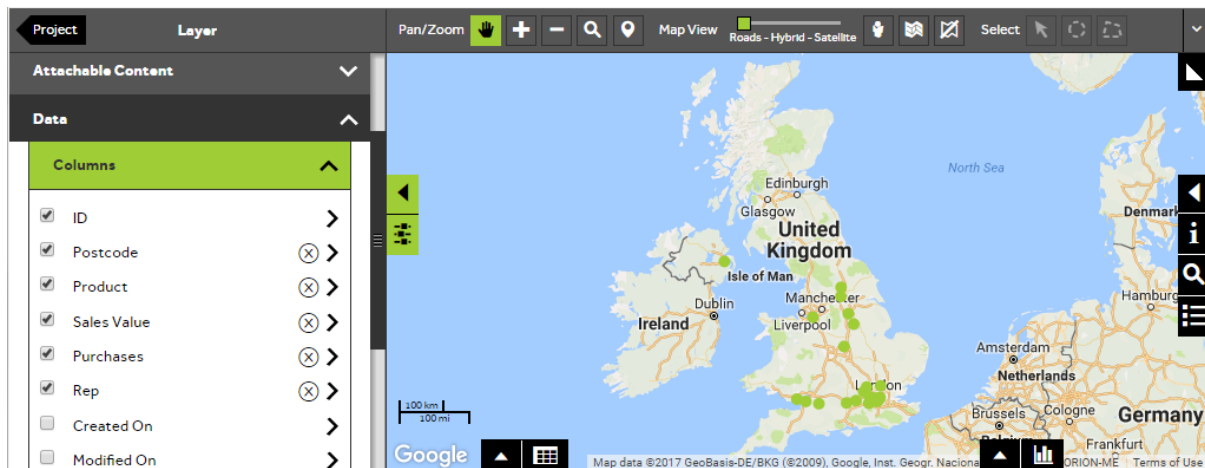
- Within the layer editor panel select **Data**, from here you can control the data associated with your catchments, expand the **Columns** selection panel.



4 of 6

## Change which columns are displayed

- You can control the columns that are displayed in the **Data View** by ticking/un-ticking the boxes next to each column name.
- You can delete a column by clicking the **X**. A message will be displayed warning you that the layer will automatically be saved if you make this change, select **Yes** when asked 'Do you wish to continue with this change?'. Some columns, like the **ID**, cannot be deleted.
- You can add a column by clicking the **+** button found at the bottom right of the **Columns** panel.



## Edit the data column

- To edit a column, click on the column name and select **Yes** when asked 'Do you wish to continue with this change?'. The panel will update to show the **Column Configuration Panel**. You can change the name of the column by clicking in the **name** box and typing.
- You can change the **Data Type** of the column by selecting from the dropdown box.
- For numeric columns, you can set the data **Format**, e.g. the number of decimal places or special formats such as time or date.
- You can also populate a column using an **Expression** to automatically generate the values. You can select an **expression type** from the first dropdown box and then use the other dropdown boxes to build or edit your calculation. For more information, refer to Catchments Steps - Calculate New Column. Click **Calculate** to update the expression.

TIP: To look at the updated data column, open the **Data View** by clicking on the data grid icon (bottom left of map).

The screenshot shows the Geoplan software interface. On the left, the 'Column Configuration Panel' is open, showing the 'Expression' tab. The expression is set to 'Simple Calculations' with a dropdown menu. Below this, there are three dropdown menus: 'Sales Value', a multiplication sign 'x', and 'Direct Value'. A text input field contains the value '2.5'. A 'Calculate' button is at the bottom of the panel. The main map area shows a map of the United Kingdom with various cities labeled. Below the map is a data grid with the following columns: #, ID, Postcode, Product, Sales Value, Purchases, Rep, and Example Calculation. The grid contains five rows of data.

#	ID	Postcode	Product	Sales Value	Purchases	Rep	Example Calculation
<a href="#">Edit</a>	1006580	BT6 9HR	C	897.88	2244.7	Rep 1	2244.7
<a href="#">Edit</a>	1007277	HP15 6QG	C	264.46	661.15	Rep 1	661.15
<a href="#">Edit</a>	1063870	W6 9RJ	C	433.96	1084.9	Rep 1	1084.90
<a href="#">Edit</a>	1135287	SG13 7NN	C	145.88	364.7	Rep 1	364.70
<a href="#">Edit</a>	129252	HG1 4HX	D	763.94	1909.85	Rep 1	1909.85

Page 1 of 5 (24 items) < [1] 2 3 4 5 >

---

## What do you want to do next?

You may wish to change the label, size or colour the Catchments based on a particular category within your data, please refer to the following sections for further assistance:

- Refer to : **Catchments Steps – Style Layer - Labels**
- Refer to : **Catchments Steps – Create Radial Catchment**
- Refer to: **Catchments Steps – Style Layer - Colour**
- Contact: **Geoplan Support**