

Editing a Catchment boundary manually

Once you have Catchments added as a layer to your project you can use the **Catchments Panel** to control the appearance of the layer, as well as the data associated with it. The following instructions will give you a step-by-step guide on how to modify the boundary of a Catchment, which is useful if you want to fine tune the edge of your Catchment area boundary.

Before you begin

Before you start styling your Catchments, make sure that you have the data set up in a saved project. If you need assistance getting the data into SKiN please refer to the following sections:

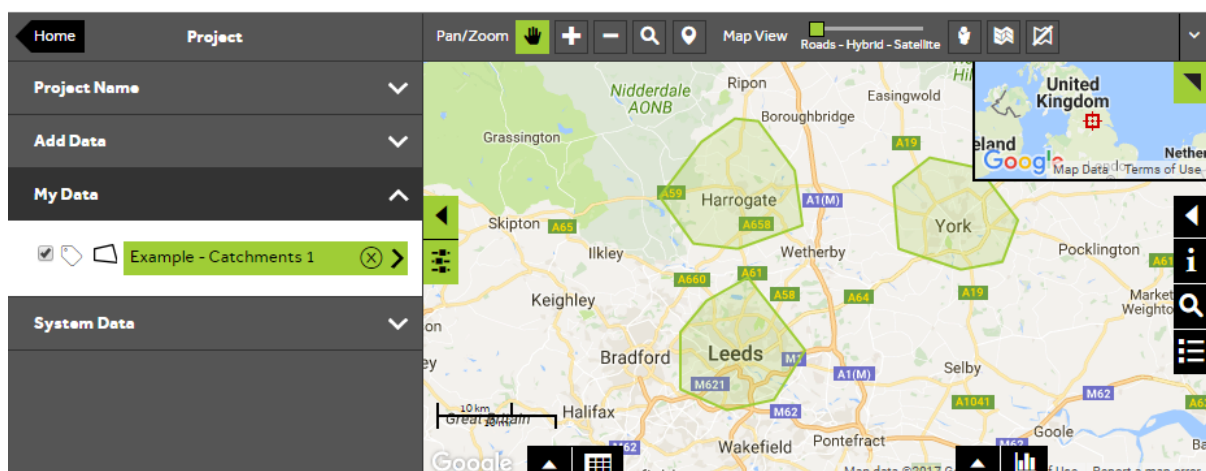
- Catchments Steps - Create Project
- Catchments Steps - Import Data
- Catchments Steps - Add Existing Layer



1 of 5

Style a Catchments layer

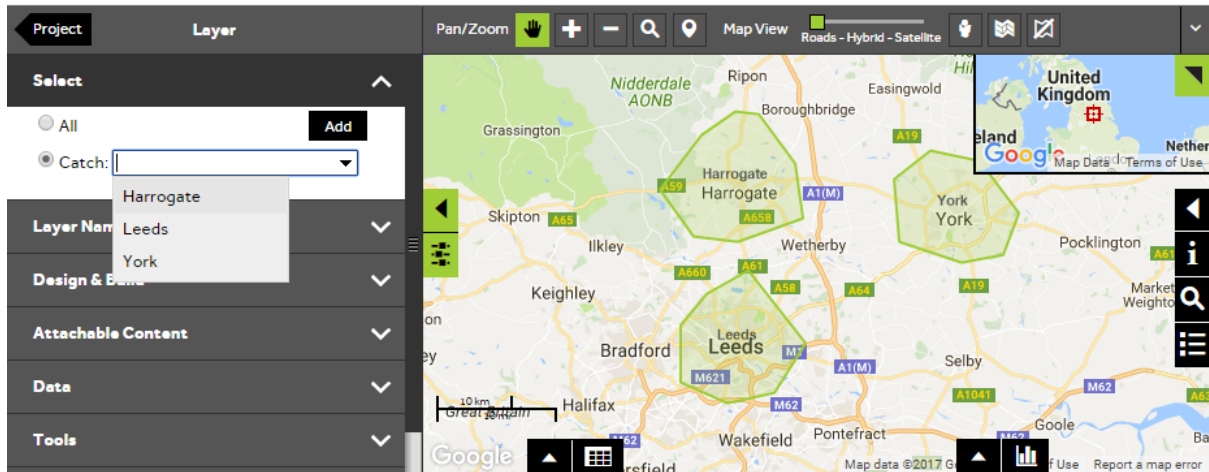
- To style your own layer, **Open an existing project**, then select **My Data** and click on the Catchments layer you wish to style.



2 of 5

Select a Catchment to modify

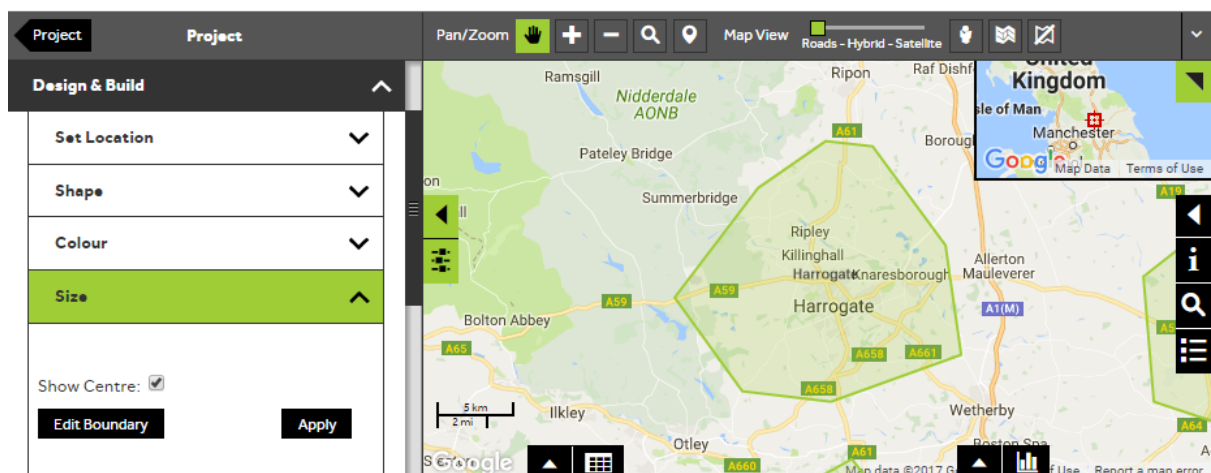
- To modify the boundary of a Catchment, you need to select the Catchment that you would like to change. Click on the button next to **Catch**, then click on the dropdown arrow and start to type the first few letters of your Catchment name. When you can see your Catchment click on it to select it.



3 of 5

Select the size panel

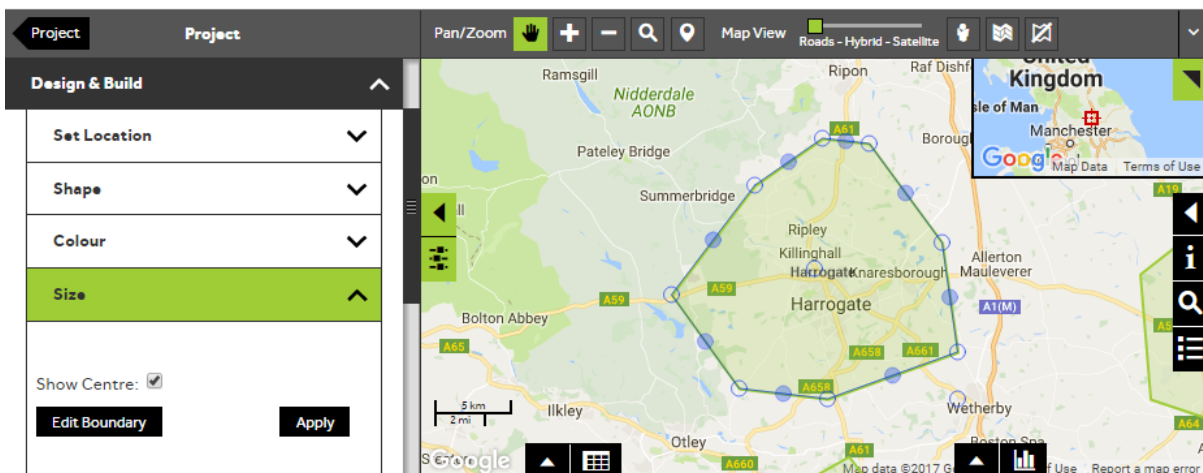
- Within the layer editor panel select **Design and Build**, from here you can control how the Catchments are displayed. Expand the **Size** section to change the size of your Catchment.



4 of 5

Edit the Catchment boundary

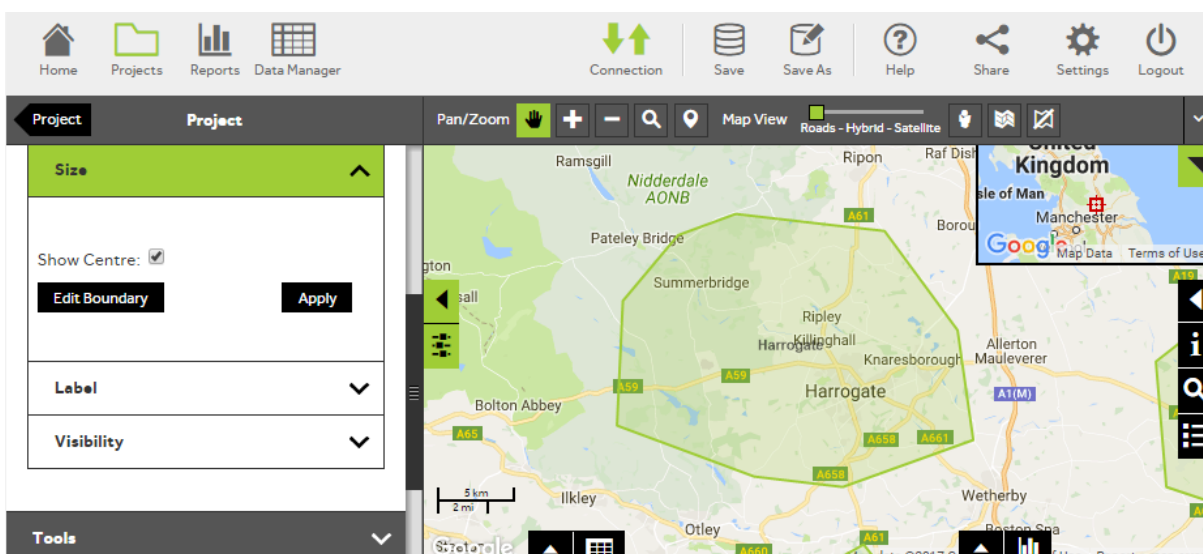
- You can change the boundary of your Catchment by clicking on **Edit Boundary**, which will change the Catchment into edit mode with blue nodes around the edge. To modify the boundary, click and drag a node to the required position. You can move as many nodes as you wish. Once you are happy with the shape of your Catchment, press **Apply** to update the Catchment.



5 of 5

Save your Catchment changes

- To save your Catchment changes to your Catchment layer press the **Save** icon at the top of the screen.



What do you want to do next?

You may wish to change the colour of your Catchments, or you may wish to attach photos or documents to your Catchments, please refer to the following sections for further assistance:

- Refer to: **Catchments Steps - Style Layer - Colour**
- Refer to: **Catchments Steps - Attach Content**
- Contact: **Geoplan Support**