

## Creating travel time Catchments

Once you have Catchments added as a layer to your project you can use the **Catchments Panel** to control the appearance of the layer, as well as the data associated with it. The following instructions will give you a step-by-step guide on how to change the size of your Catchments in SKiN by creating a travel time isochrone around each Catchment.

### Before you begin

Before you start styling your Catchments make sure that you have the data set up in a saved project. If you need assistance getting the data into SKiN please refer to the following sections:

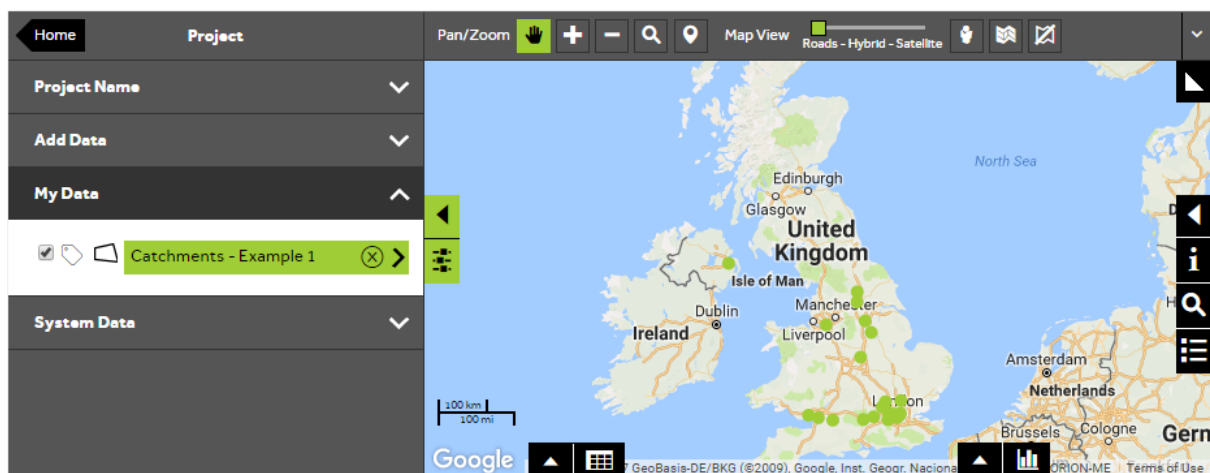
- Catchments Steps - Create a Project
- Catchments Steps - Import Data



1 of 5

### Style a Catchment layer

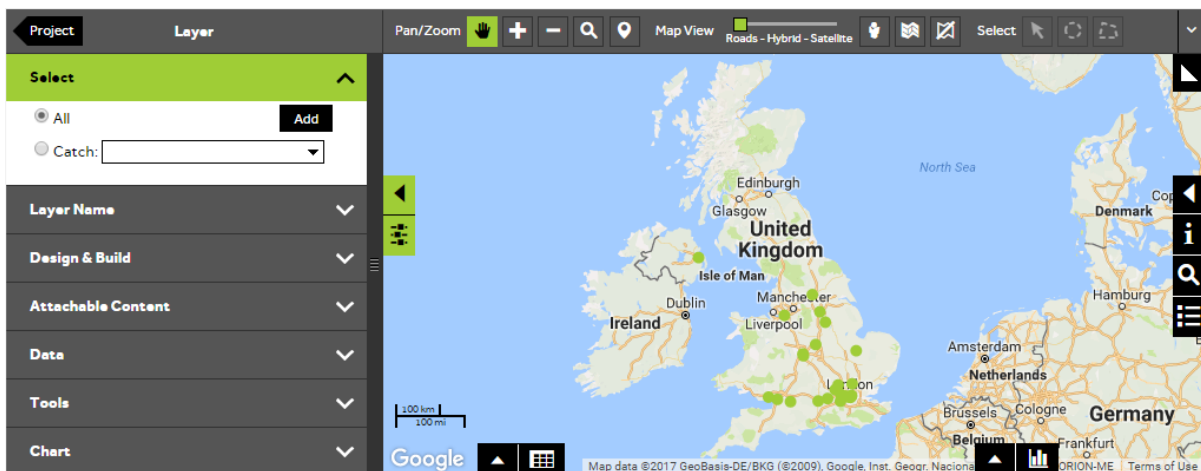
- To style your own data, **Open an existing project** and then select **My Data**, click on the layer you wish to style.



2 of 5

## Select Catchments to update

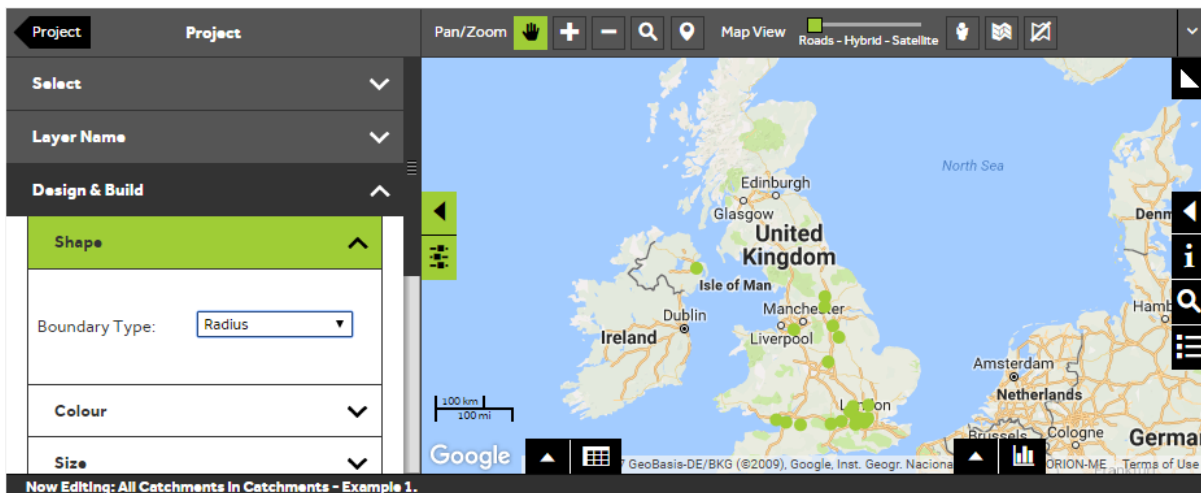
- In the **Select** section of the panel, you can control whether to update all Catchments in the layer or just a single Catchment. To update all Catchments, make sure that the **All** button is selected. To select an individual Catchment, click on the **Catch** button, then start to type the Catchment Identifier in the text box and select the required Catchment from the drop down list.



3 of 5

## Change the Catchments shape

- Within the layer editor panel select **Design and Build**, from here you can control how the Catchments are displayed. Expand the **Shape** selection panel.

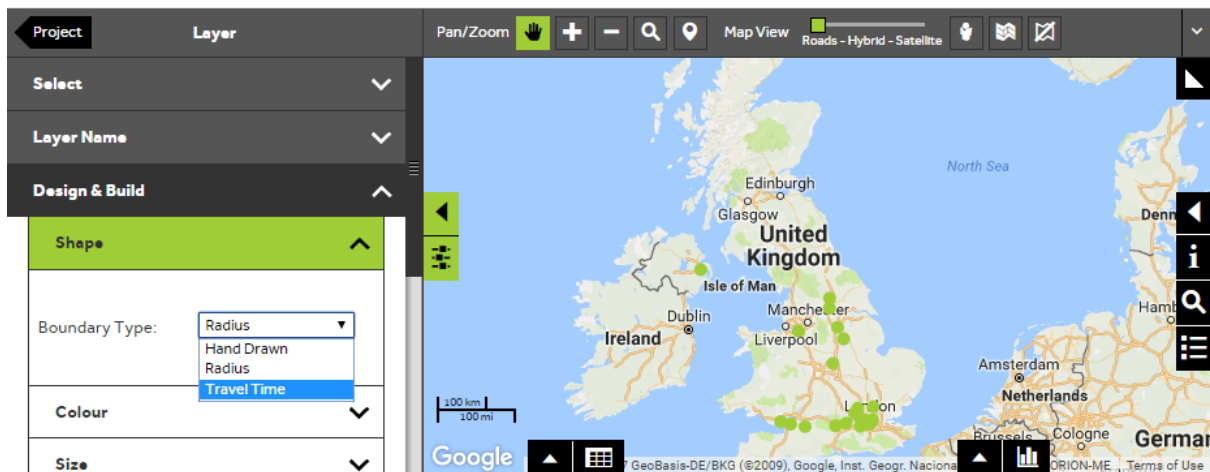


Now Editing: All Catchments In Catchments – Example 1.

4 of 5

## Create travel time Catchments

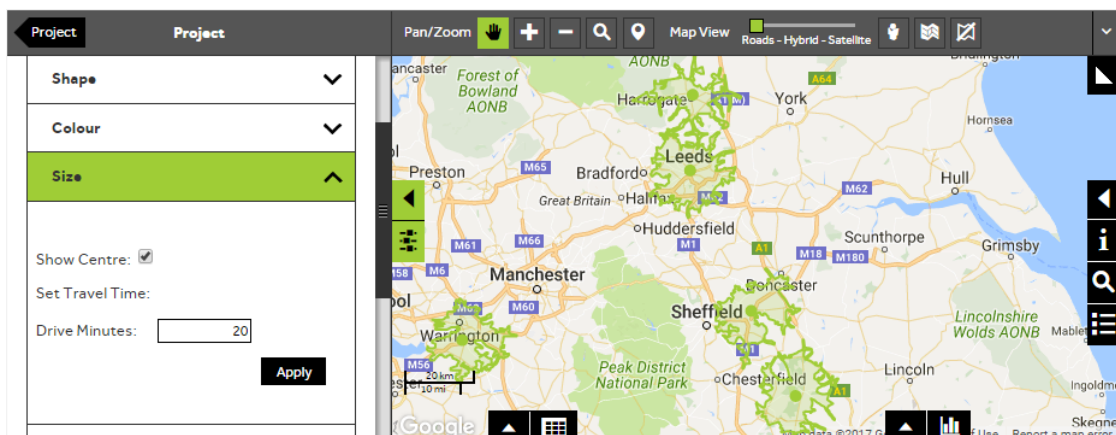
- To change the size of your Catchments by creating a travel time isochrone around each Catchment select **Travel Time**.



5 of 5

## Enter the size of your Catchments

- Expand the **Size** panel, from here you can control the size of the Catchments. You can enter a value into the **Drive Minutes** box to create travel time Catchments of size entered. Press **Apply** to display the Catchments. You may need to zoom in to view the Catchments depending on the size.



---

## What do you want to do next?

You may wish to change the label or colour of your Catchments based on a particular category within your data, or you may wish to find out what features lie within your Catchments, please refer to the following sections for further assistance:

- Refer to: **Catchments Steps - Style Layer - Colour**
- Refer to: **Catchments Steps - Style Layer - Labels**
- Refer to: **Catchments Steps - What's in My Catchments?**
- Contact: **Geoplan Support**