

Creating radial Catchments

Once you have Catchments added as a layer to your project you can use the **Catchments Panel** to control the appearance of the layer, as well as the data associated with it. The following instructions will give you a step-by-step guide on how to change the size of your Catchments in SKiN by creating a radius around each Catchment, it will also show you how to create multiple radii around each Catchment centre.

Before you begin

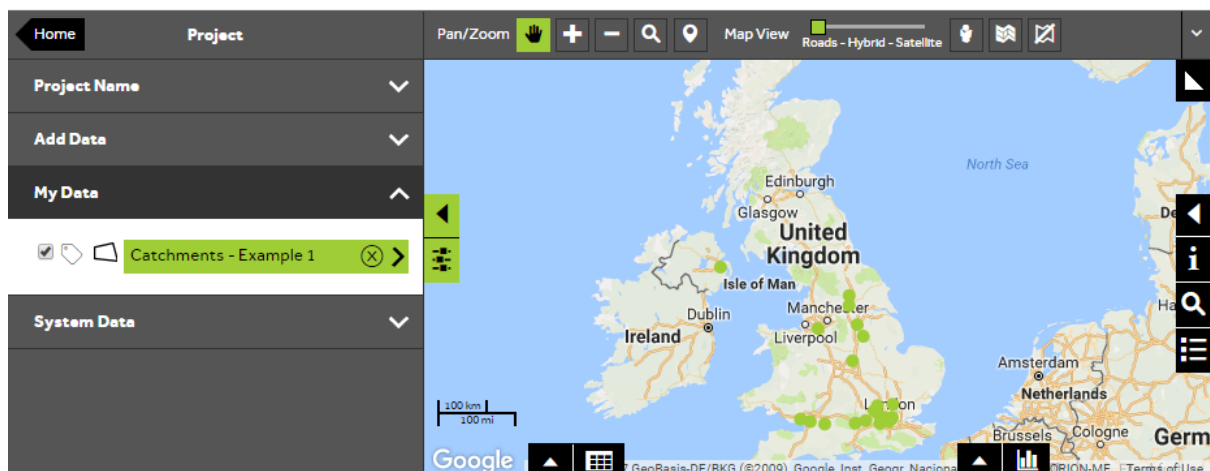
Before you start styling your Catchments make sure that you have the data set up in a saved project. If you need assistance getting the data into SKiN please refer to the following sections:

- Catchments Steps - Create a Project
- Catchments Steps - Import Data



1 of 6 Style a Catchment layer

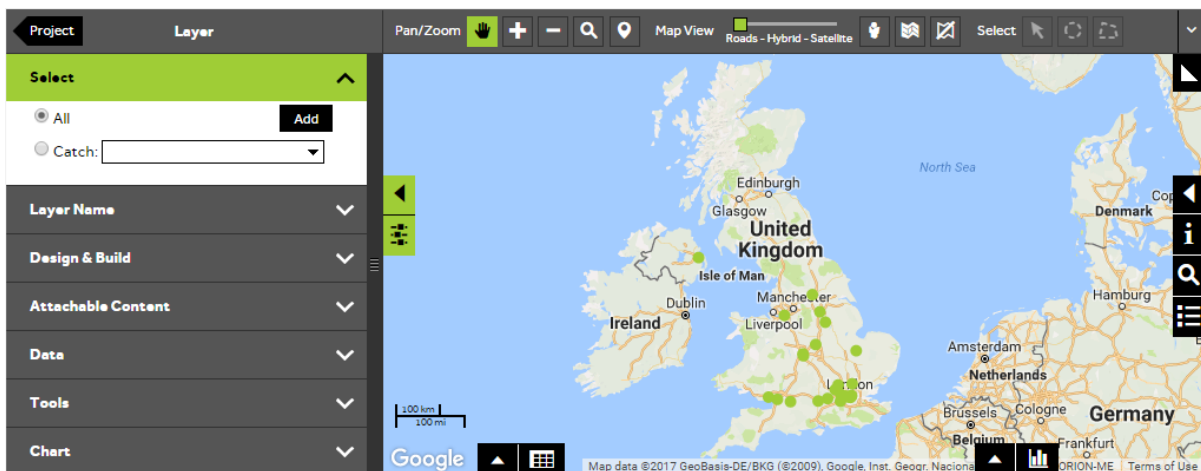
- To style your own data, **Open an existing project** and then select **My Data**, click on the layer you wish to style.



2 of 6

Select Catchments to update

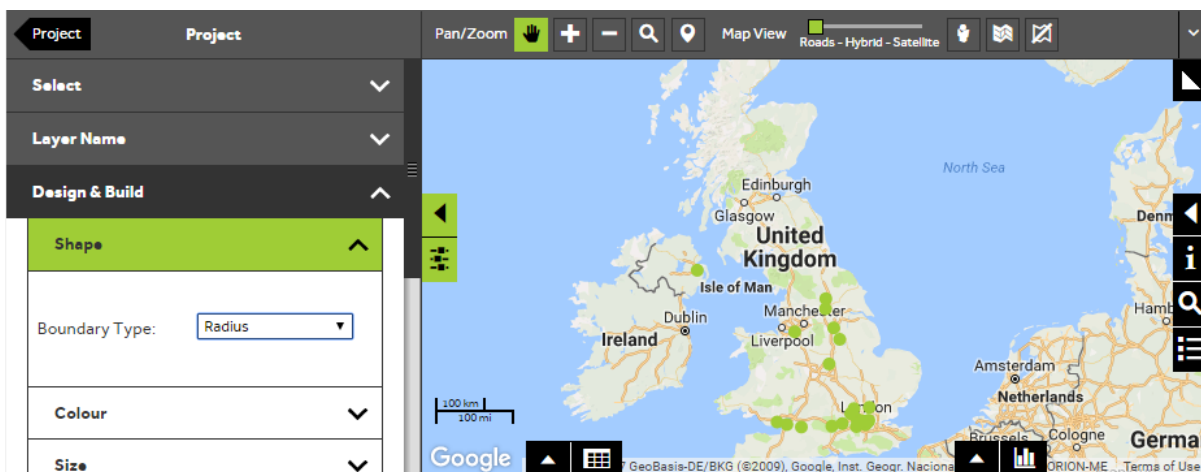
- In the **Select** section of the panel, you can control whether to update all Catchments in the layer or just a single Catchment. To update all Catchments, make sure that the **All** button is selected. To select an individual Catchment, click on the **Catch** button, then start to type the Catchment Identifier in the text box and select the required Catchment from the drop down list.



3 of 6

Choose the shape

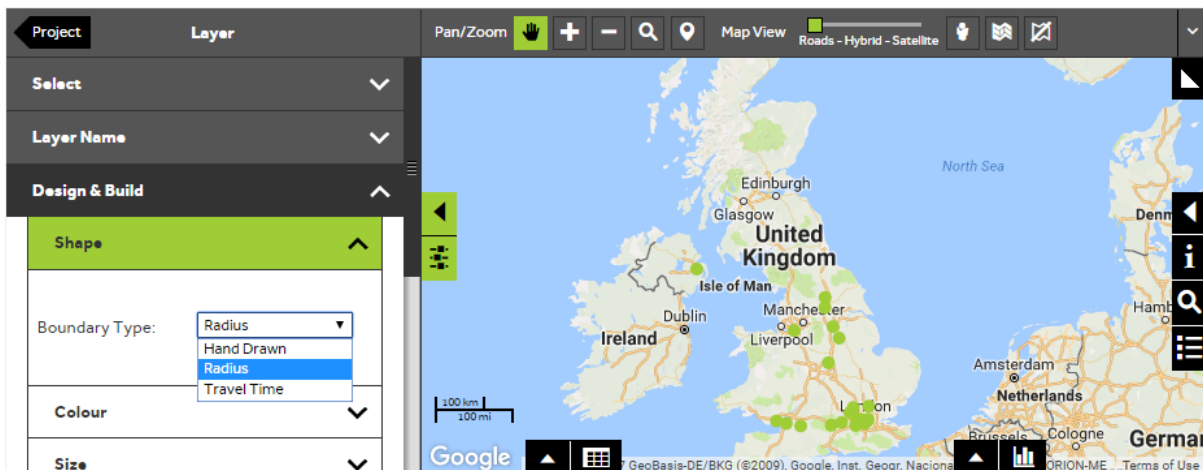
- Within the layer editor panel select **Design and Build**, from here you can control how the catchments are displayed. Expand the **Shape** selection panel.



4 of 6

Select the radius option

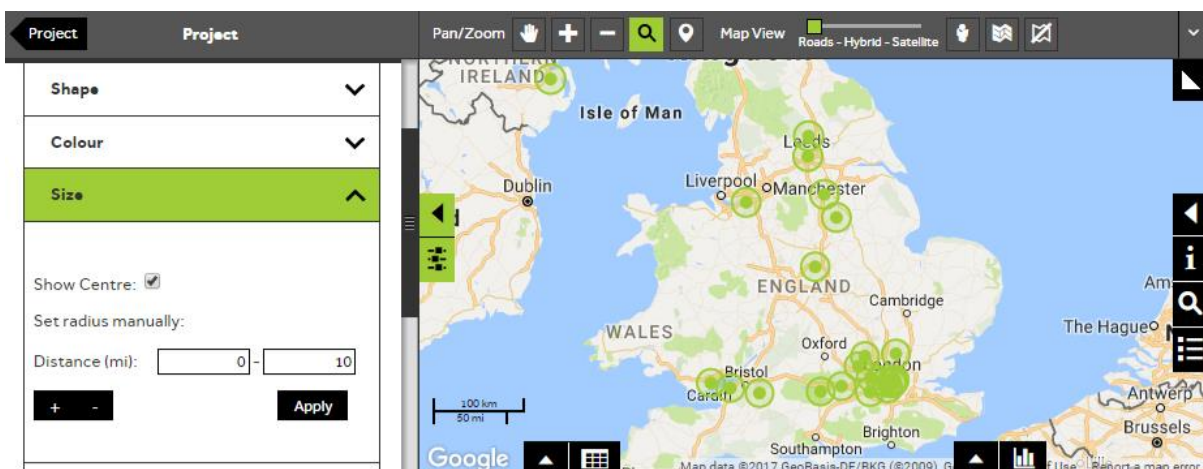
- To change the size of your catchments by creating a radius around each catchment select **Radius**.



5 of 6

Change the size of your Catchments

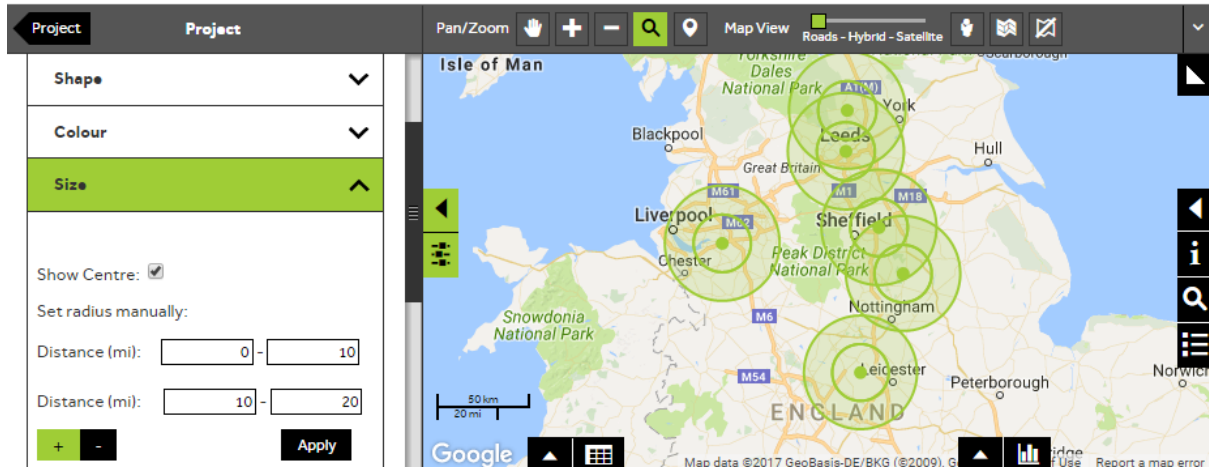
- Expand the **Size** panel, from here you can control the size of the Catchments. You can enter a value into the second box next to **Distance** to create a radial Catchment from each Catchment centre to the distance specified. Alternatively, if you don't want your Catchment to start at the Catchment centre you can also enter a value in the box right next to **Distance**, which will create doughnut shaped Catchments. Press **Apply** to display the Catchments. You may need to zoom in to view the Catchments depending on the size.



6 of 6

Create multiple Catchments

- You can create additional Catchments by pressing the **+** button in the bottom left of the **Size** panel. Enter the required size into the **Distance** value boxes and press **Apply** to display the Catchments on the map.



What do you want to do next?

You may wish to change the label or colour of the Catchments, or you may wish to attach photos or documents, please refer to the following sections for further assistance:

- Refer to: **Catchments Steps - Style Layer - Colour**
- Refer to: **Catchments Steps - Style Layer - Labels**
- Refer to: **Catchments Steps - Attach Content**
- Contact: **Geoplan Support**