

Creating a Snapshot image

Once you have Catchments added as a layer to your project you can create a snapshot of your map and save it to a file. The following instructions will give you a step-by-step guide on how to create a snapshot image within SKiN.

Before you begin

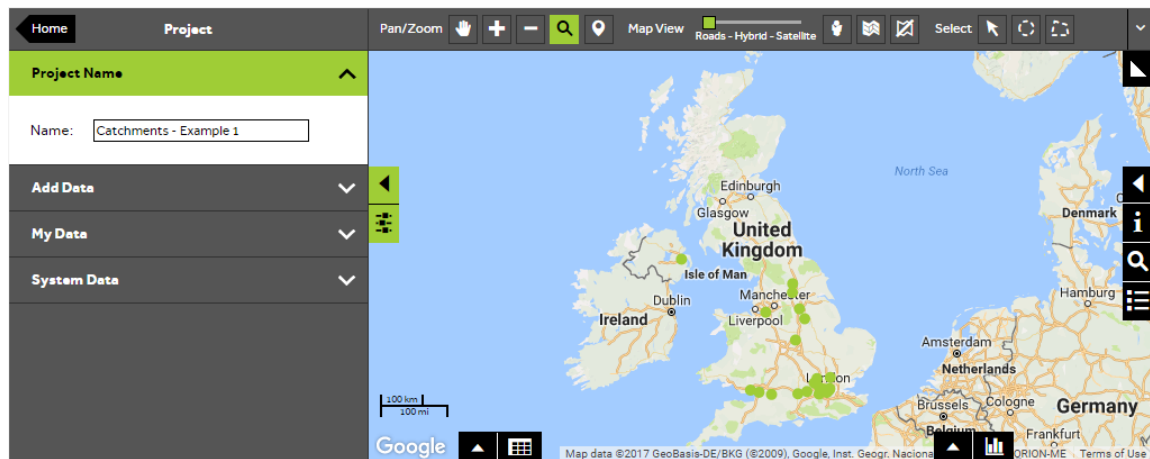
Before you start creating output for your Catchments, make sure that you have the data set up in a saved project. If you need assistance getting the data into SKiN please refer to the following sections:

- Catchments Steps - Create Project
- Catchments Steps - Import Data
- Catchments Steps - Add Existing Layer



1 of 4 Open a project

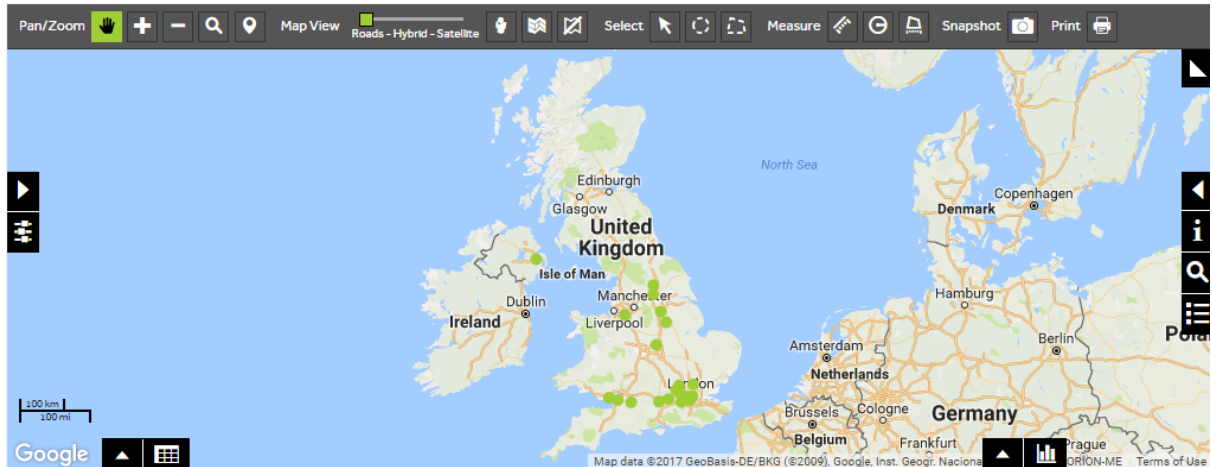
- To create a snapshot of your own data. **Open an existing project** to display the map you would like to capture in the snapshot.



2 of 4

Create a Snapshot

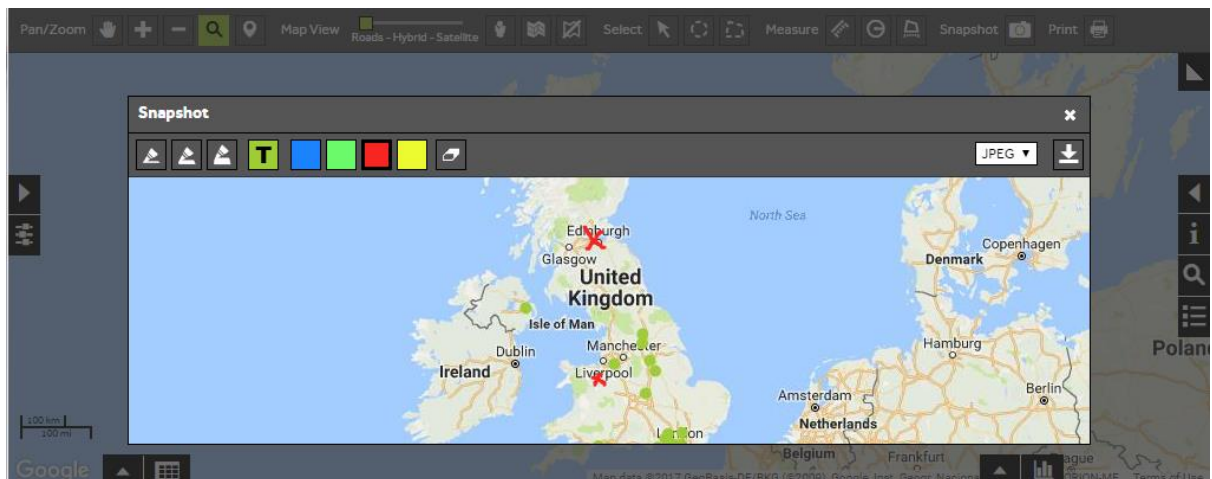
- To create a snapshot of your map view click on the **Snapshot** button. If you cannot see the snapshot button above the map, close the left hand panel by clicking on the arrow at the side of the panel, you should then be able to see the snapshot button.



3 of 4

Annotate the Snapshot

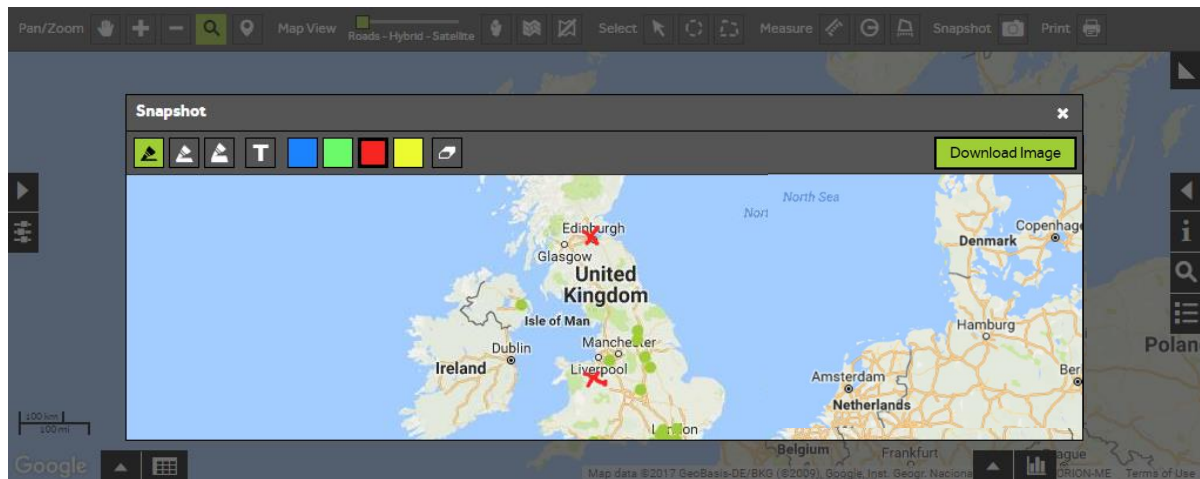
- You can use the drawing tools in the top-left of the snapshot window to annotate the map. You can select the line thickness, add text, change the line colour and erase.



4 of 4

Download the Image

- To download your image, select the **Download** button from the top right of the snapshot window to create your file. A link to the png file will appear at the bottom of the screen.



What do you want to do next?

You may wish to create a report, print a map or export your Catchments to a file, please refer to the following sections for further assistance:

- Refer to: **Catchments Steps – Create Output - Report**
- Refer to: **Catchments Steps – Create Output - Export**
- Refer to: **Catchments Steps – Create Output – Print (OSM)**
- Refer to: **Catchments Steps – Create Output – Print (Google)**
- Contact: **Geoplan Support**