

Exporting Catchments data to a file

Once you have Catchments added as a layer to your project you can use the **Catchments Panel** to control the appearance of the layer, as well as the data associated with it. The following instructions will give you a step-by-step guide on how to export catchments and associated data from within SKiN to Excel.

Before you begin

Before you start exporting data associated with your Catchments, make sure that you have the data set up in a saved project. If you need assistance getting the data into SKiN please refer to the following sections:

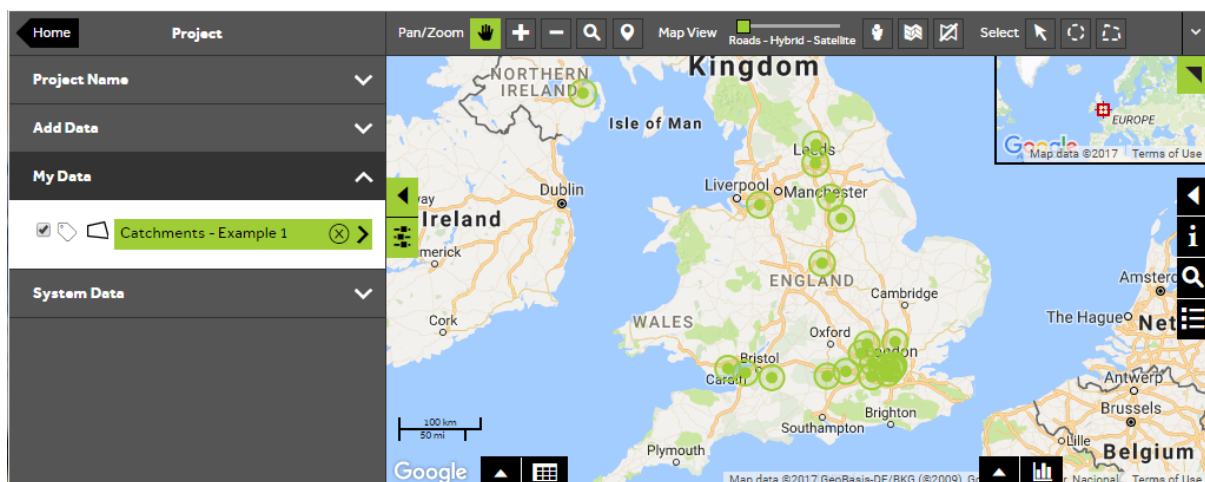
- Catchments Steps - Create Project
- Catchments Steps - Import Data
- Catchments Steps - Add Existing Layer



1 of 6

Open the Catchment layer

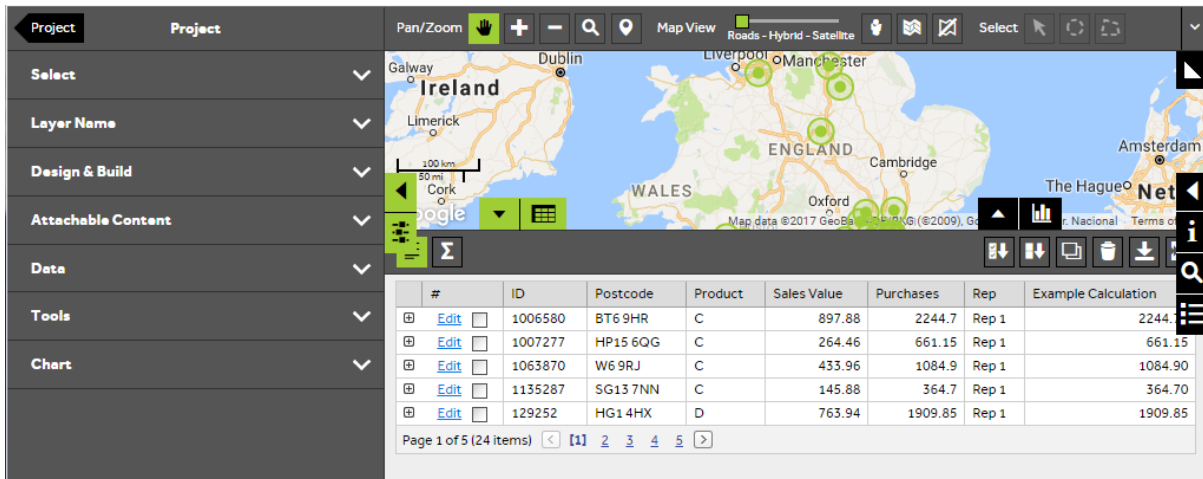
- To export Catchment data from your own layer, **Open an existing project** and then select **My Data**. Click on the layer you wish to export.



2 of 6

Open the data view

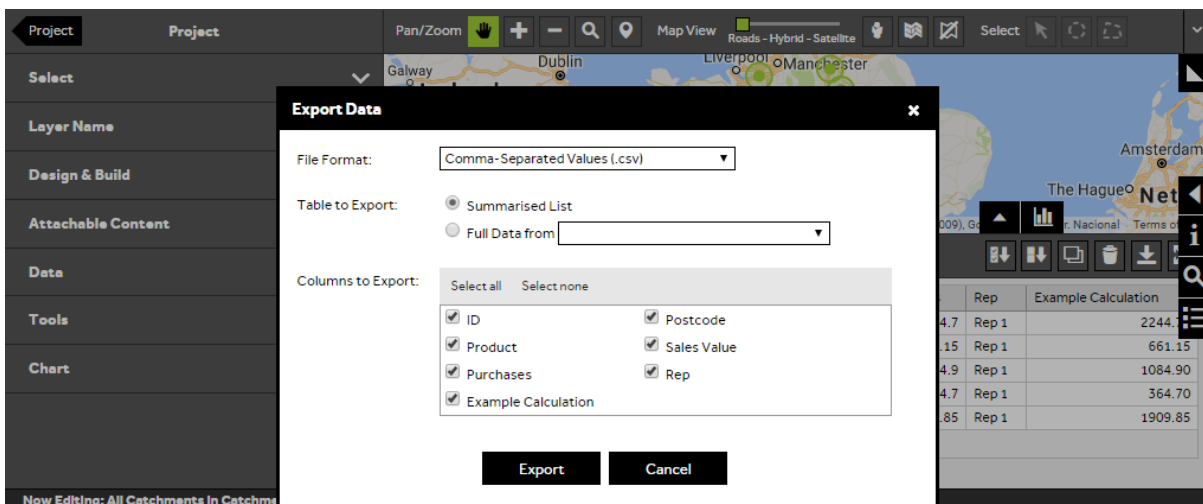
- Within the layer editor panel click on the data grid button to open the **Data View**.



3 of 6

Export the Catchment data

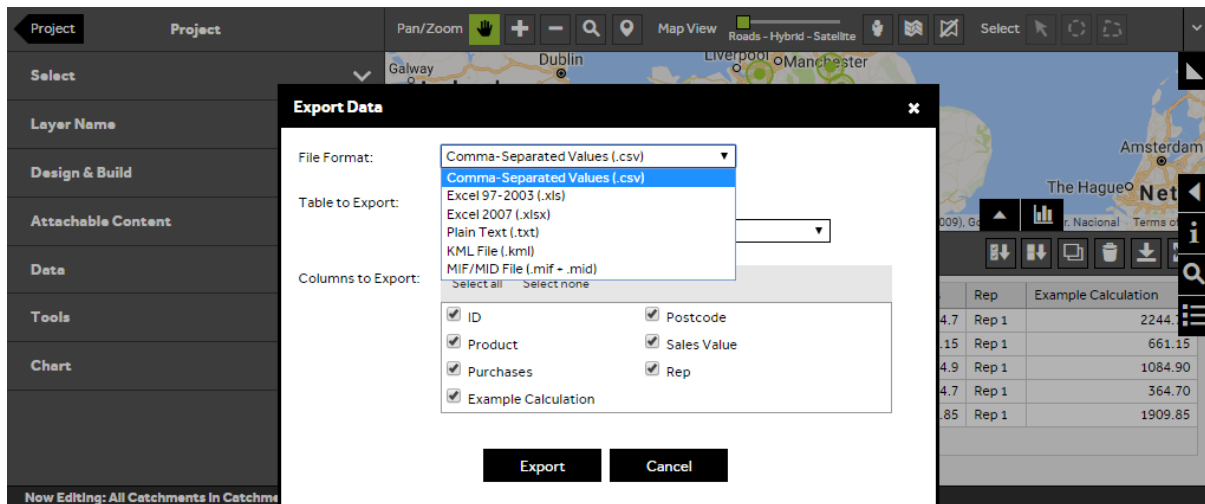
- To open the **Export Data** window click on the **Export** button which can be found on the right hand side at the top of the data view.



4 of 6

Select the file format

- You can change the **File Format** by clicking in the box and selecting the format that you would like to create.



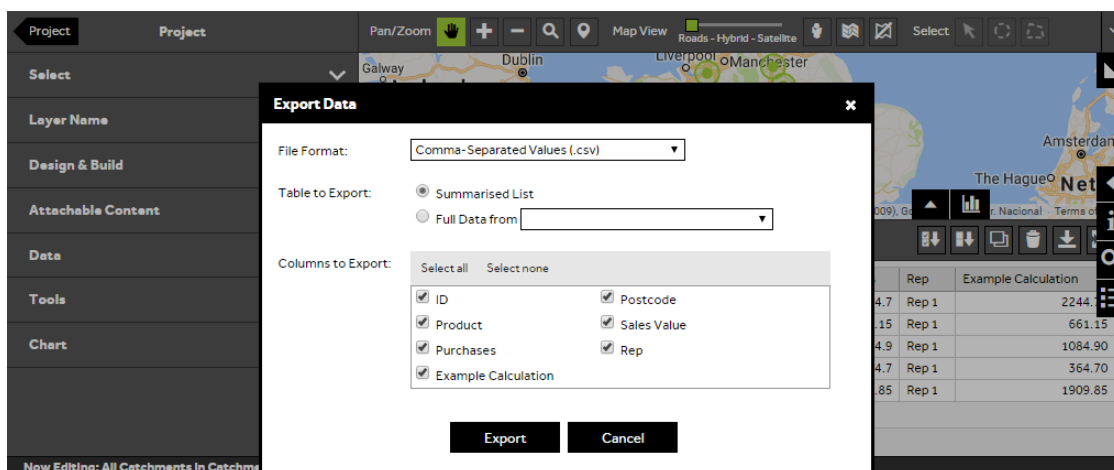
5 of 6

Choose which table to export

- You can choose the level of detail that you want to export by selecting one of the following next to **Table to Export**:

Summarised List: This will provide a single row for each Catchment within your layer

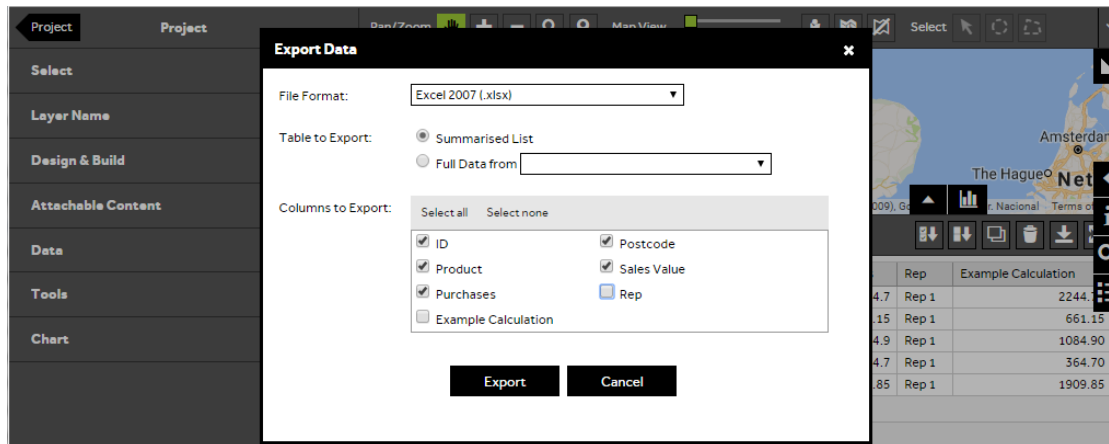
Full Data from: When working with Catchments you may have interacted with other layers (for example if you have run **What's In My Catchments?**). In this case you can choose to export the **full data** from these other layers that relate to your Catchments.



6 of 6

Choose which columns to export

- You can choose the columns to include in your export by unticking / ticking the column names in the **Columns to Export** box. You can also **Select all** or **Select None**. Press the **Export** button to create your exported Catchment file.



What do you want to do next?

You may wish to find out what components of another layer fall into your Catchments or you may wish to create a report, please refer to the following sections for further assistance:

- Refer to: **Catchments Steps - What's in My Catchments?**
- Refer to: **Catchments Steps - Create Output - Report**
- Contact: **Geoplan Support**