

How to combine or split Catchments

Once you have Catchments added as a layer to your project there are several tools that are available within the **Catchments Panel** that allow further analysis to be carried out. The following instructions will give you a step-by-step guide on how to **Combine** two or more Catchments so that they become a single Catchment area and also how to **Split** Catchments that overlap each other to create unique Catchments that do not prediction.

Before you begin

Before you start using the Catchment analysis tools, make sure that you have the data set up in a saved project. If you need assistance getting the data into SKiN please refer to the following sections:

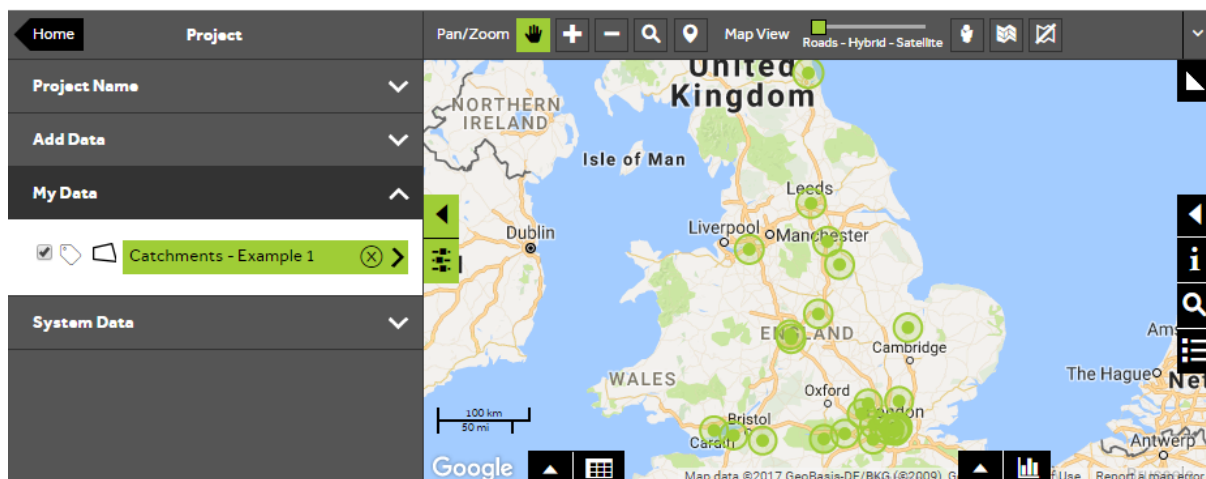
- Catchments Steps - Create Project
- Catchments Steps - Import Data
- Catchments Steps - Add Existing Layer



1 of 7

Access the Catchment layer tools

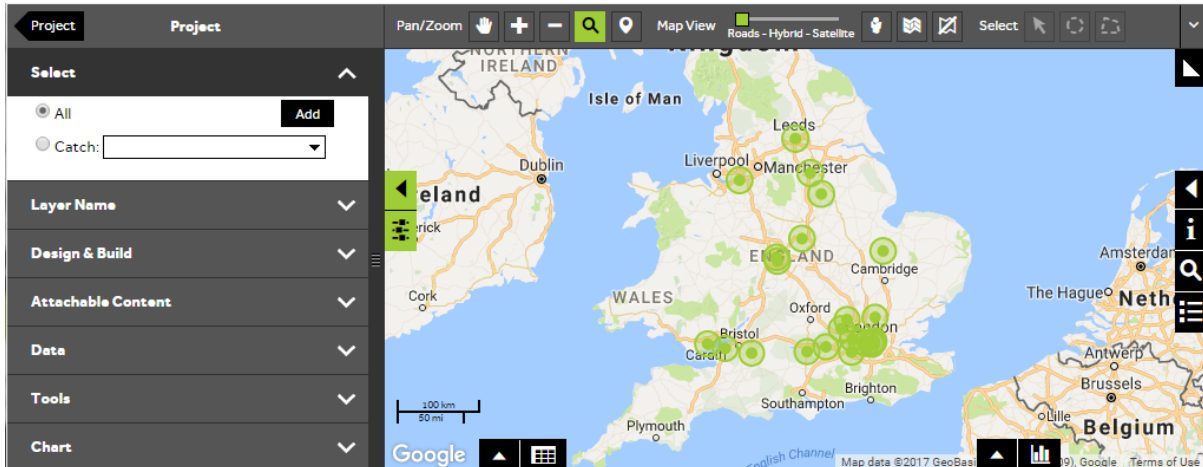
- To access the **Catchment Tools** to analyse your own Catchment layer, **Open an existing project** and then select **My Data**, click on the Catchment layer you wish to analyse.



2 of 7

Select all Catchments

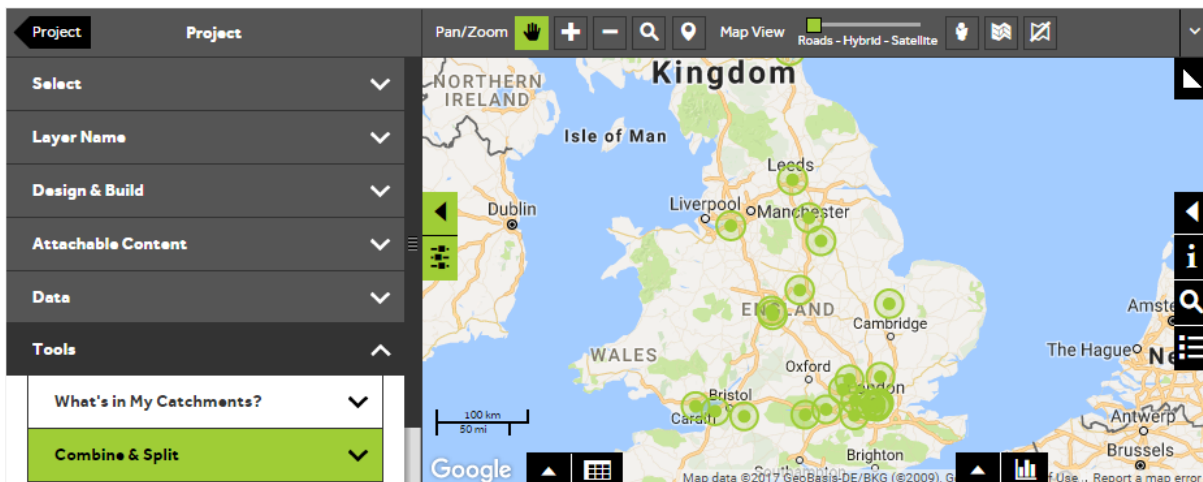
- To use the **Combine & Split** tool you need to firstly make sure that all Catchments are selected. Open the **Select** section of the panel and click on the **All** button if this is not currently selected.



3 of 7

Open the 'Combine & Split' tool

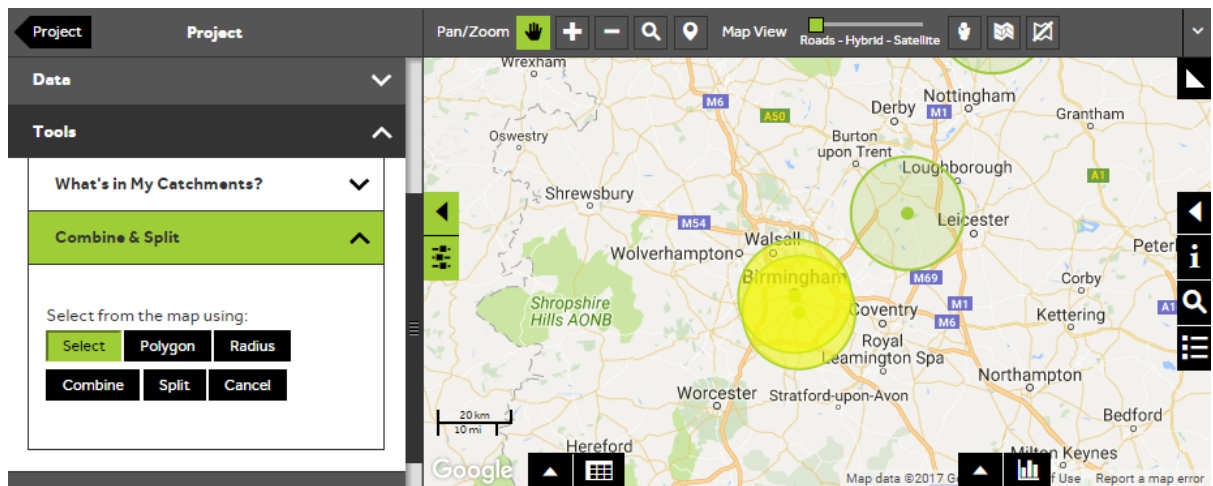
- To open the **Combine & Split** tool, open the **Tools** section and select **Combine & Split**.



4 of 7

Select the Catchments to combine

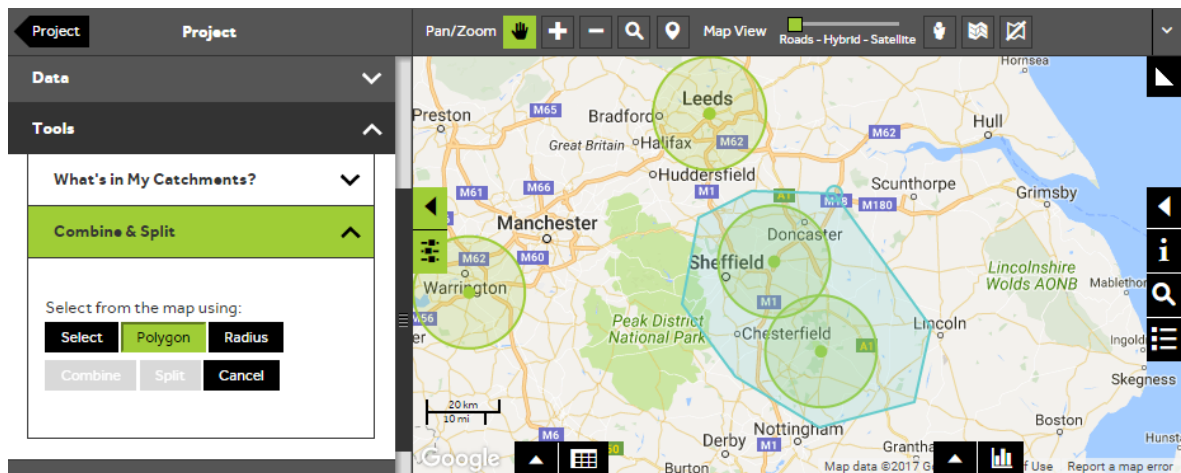
- To select the Catchments that you would like to combine into one Catchment, zoom (using the zoom tool with the magnifying glass icon above the map) into the area around the Catchments that you would like to combine, then click on **Select** (in the Combine & Split section) and click on each of the Catchments that you would like to combine. You will notice that the selected Catchments are highlighted in yellow. Press **Combine** to create a combined Catchment.



5 of 7

Select Catchments using the polygon or radius method

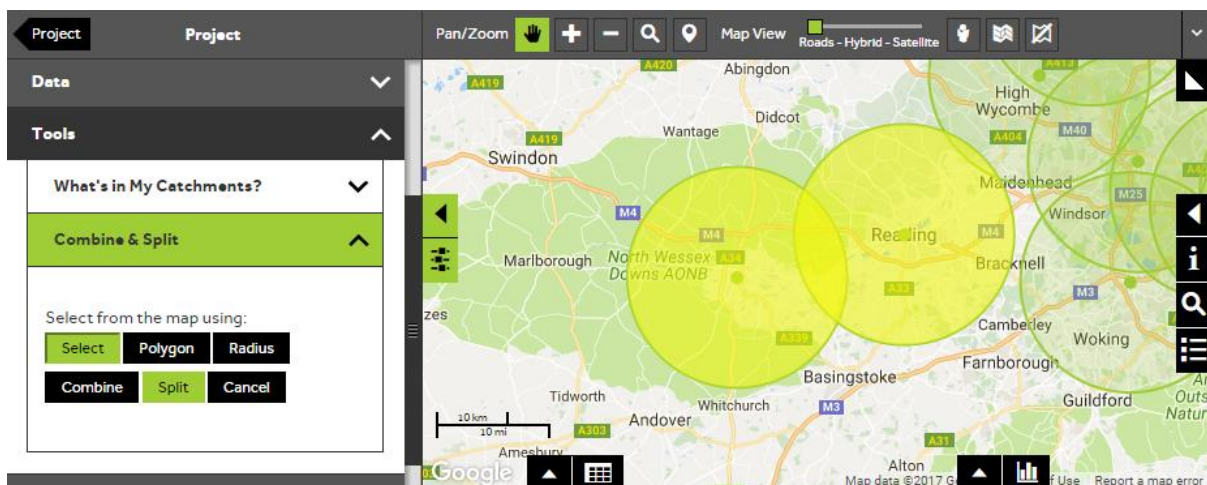
- An alternative way of selecting the Catchments that you would like to combine is by using the **Polygon** or the **Radius** method. To use the polygon method, click on **Polygon** and click around the Catchments that you wish to combine, click the first point to close the surrounding polygon and then press **Combine**. To use the radius method, click on **Radius** and then click on the map and drag a circle around the Catchments that you want to combine.



6 of 7

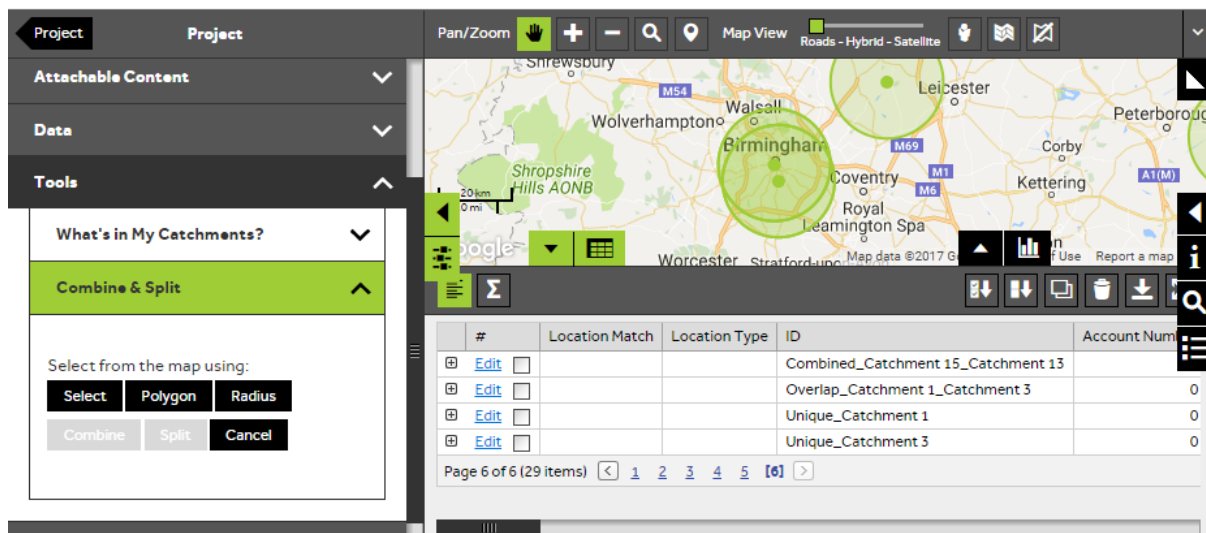
Split your overlapping Catchments

- To split Catchments to create unique areas, select the Catchments using one of the three selection methods **Select**, **Polygon** or **Radius** and press **Split**.



View your combined or split Catchments

- After combining or splitting your Catchments you can open the **Data View** by pressing the data grid icon at the bottom left of the map. You will notice that extra Catchments have been created. Where Catchments have been combined, there will be one new Catchment, prefixed with the word Combined. If you have split two Catchments, the system will have created 3 new Catchments; a unique area of the first Catchment, a unique area of the second Catchment and an overlap of the 2 Catchments.



What do you want to do next?

You may wish to change the colour of your Catchments or find out what features fall within each Catchment, please refer to the following sections for further assistance:

- Refer to: **Catchments Steps - Style Layer - Colour**
- Refer to: **Catchments Steps - What's in My Catchments?**
- Contact: **Geoplan Support**