

Calculating a new data column

Once you have a layer added to your project you can use the **Catchments Panel** to control the appearance of the layer, as well as the data associated with it. The following instructions will give you a step-by-step guide on how to create additional data columns that can be used with your layer.

Before you begin

Before you start adding additional data to your Catchments, make sure that you have data set up in a saved project. If you need assistance getting the data into SKiN please refer to the following sections:

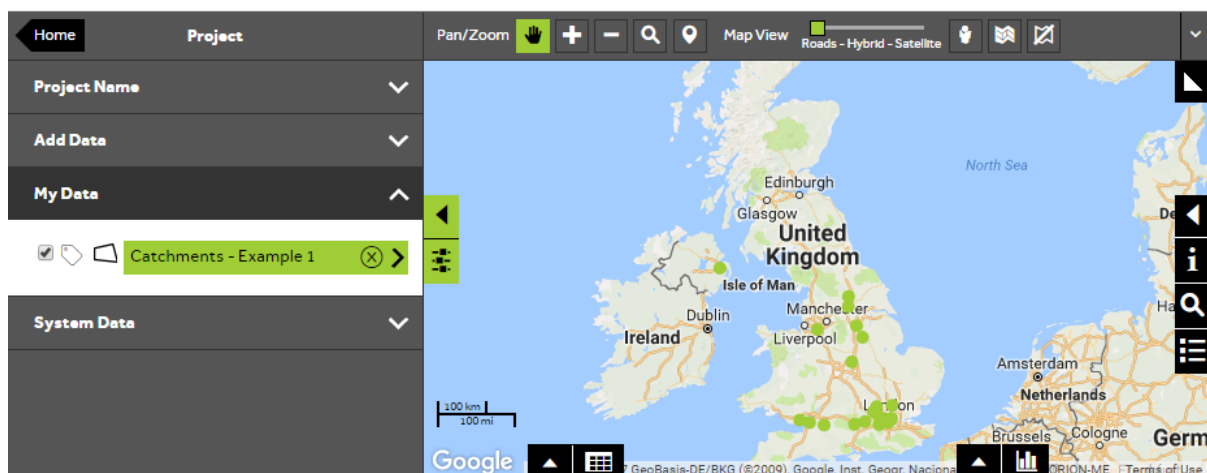
- Catchments Steps - Create Project
- Catchments Steps - Import Data



1 of 9

Edit a layer

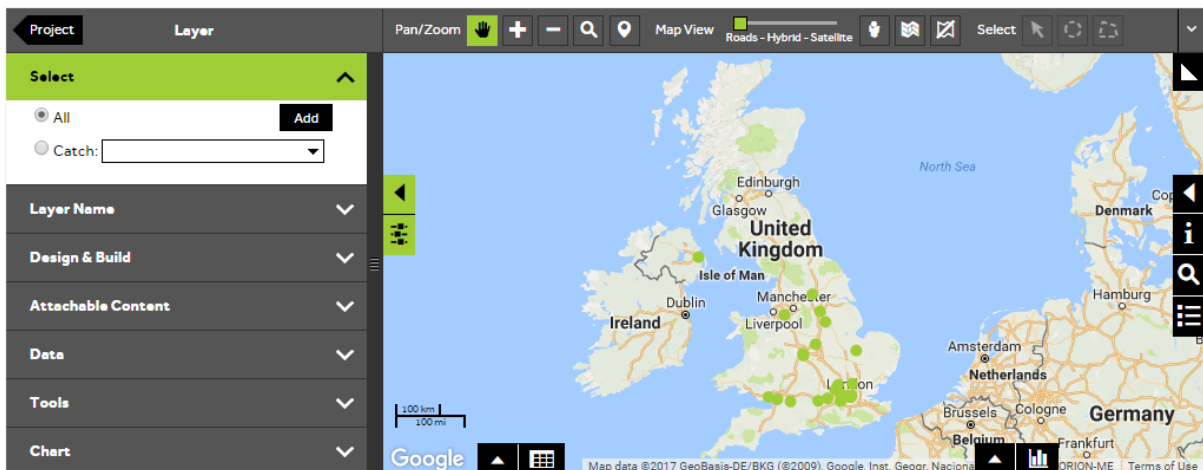
- To edit your own data, **Open an existing project** and then select **My Data**, click on the layer you wish to edit.



2 of 9

Select all Catchments

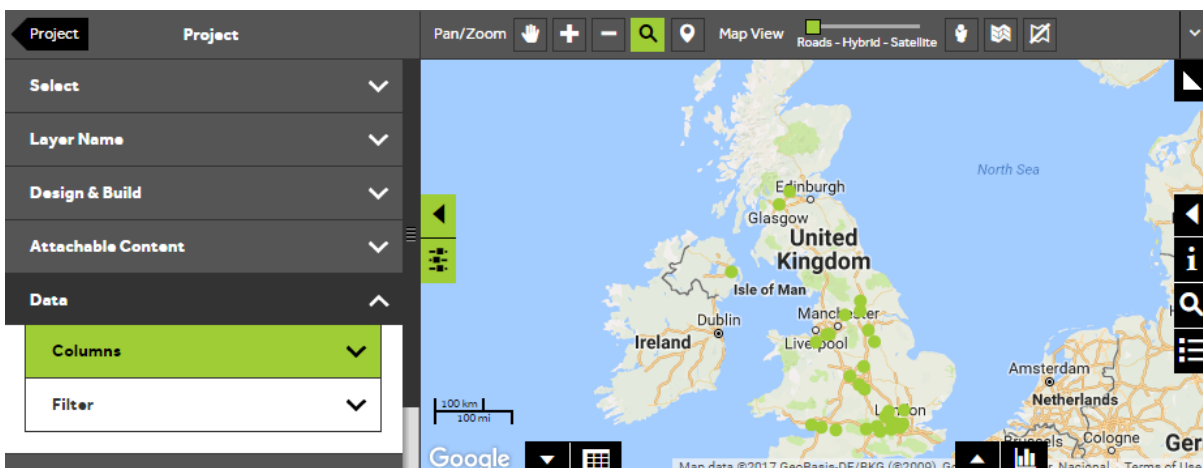
- Before a data column can be added to a layer, all Catchments in the layer must be selected. To check this, open the **Select** section of the panel and make sure that the **All** button is selected.



3 of 9

View data columns

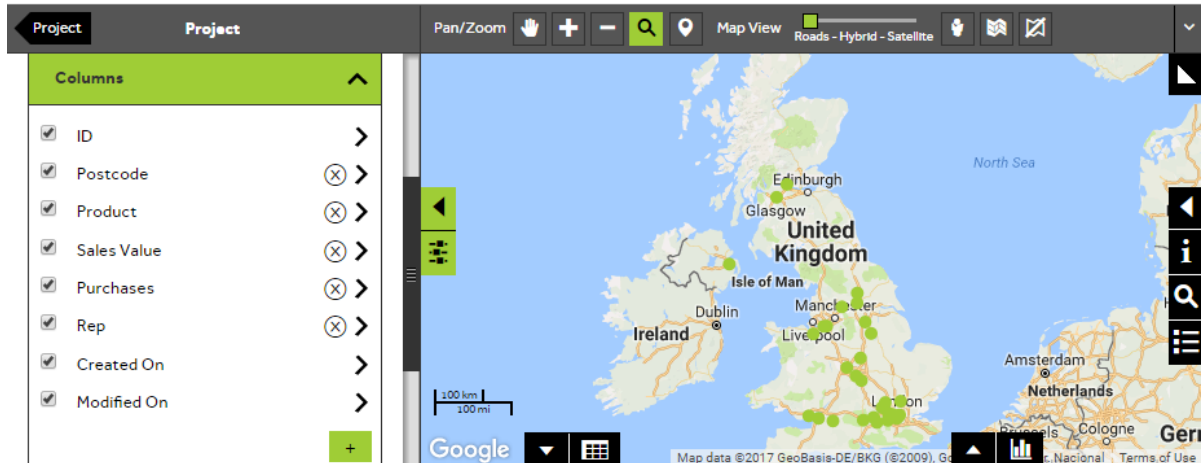
- Within the layer editor panel select **Data**, from here you can control how the data is displayed in the Data View, then select **Columns** to display a list of all the data columns that are currently available in your layer.



4 of 9

Add a new data column

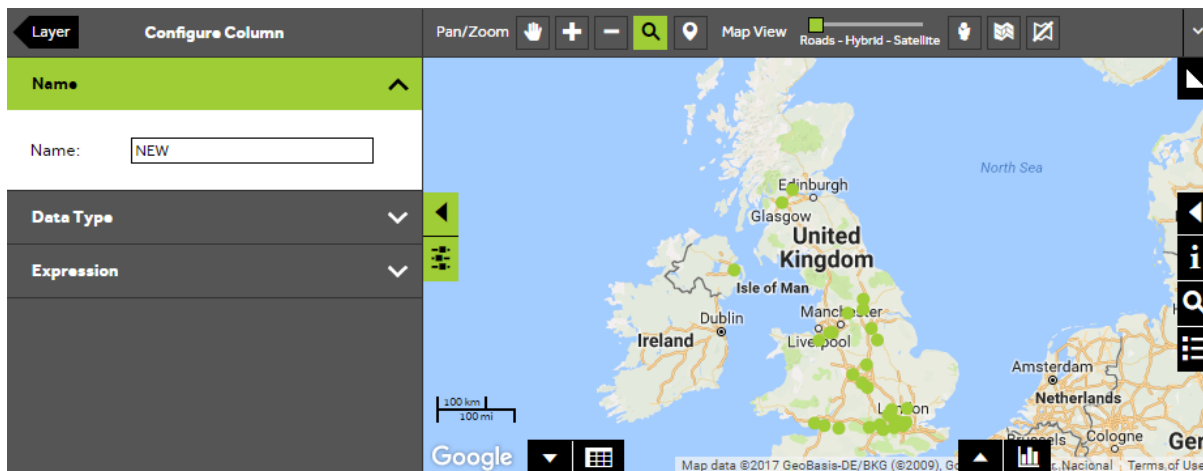
- To add a new data column, click on the **+** button (underneath the list of columns). A warning message will be displayed to let you know that the layer will automatically be saved if you add a new column. Choose **Yes** to continue.



5 of 9

Name the new data column

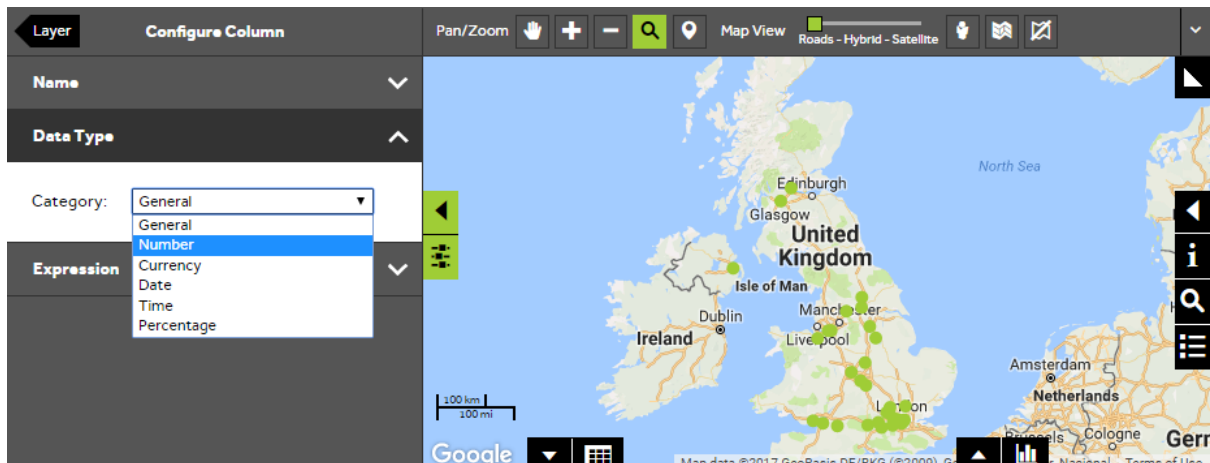
- To name your new data column, open the **Name** section and type a name in the box.



6 of 9

Choose a data type

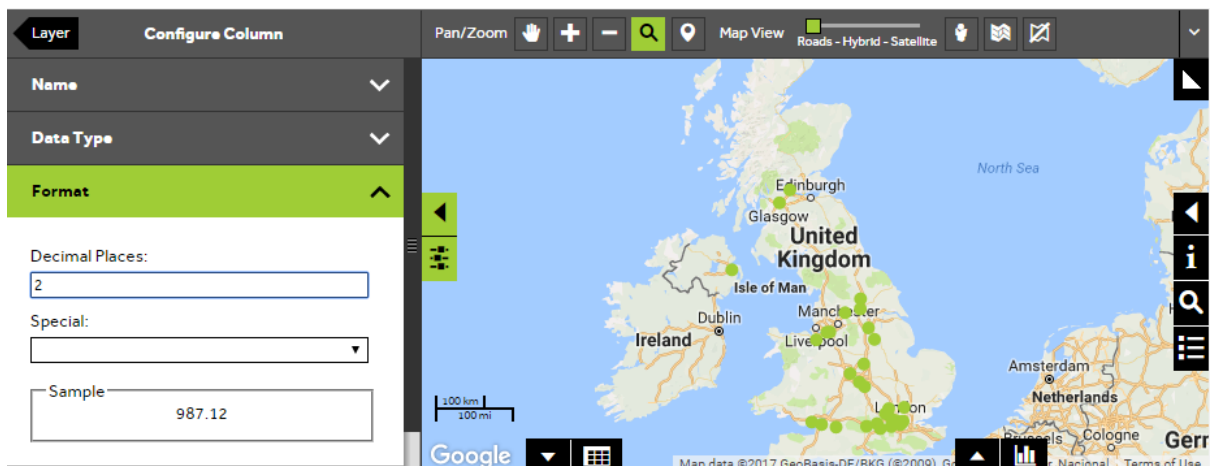
- You can choose from several different data types by opening the **Data Type** section and selecting the required type from the dropdown list.



7 of 9

Change the data format

- Depending on which data type you have chosen, you may find a **Format** section which will allow you to specify how you want your data to be formatted. Change the formatting if required.



8 of 9

Build the data expression

- To build your data expression, open the **Expression** section, select the type of calculation from the dropdown list and then use the dropdown boxes to create the expression for your new data column. The types of expressions you can choose from are:

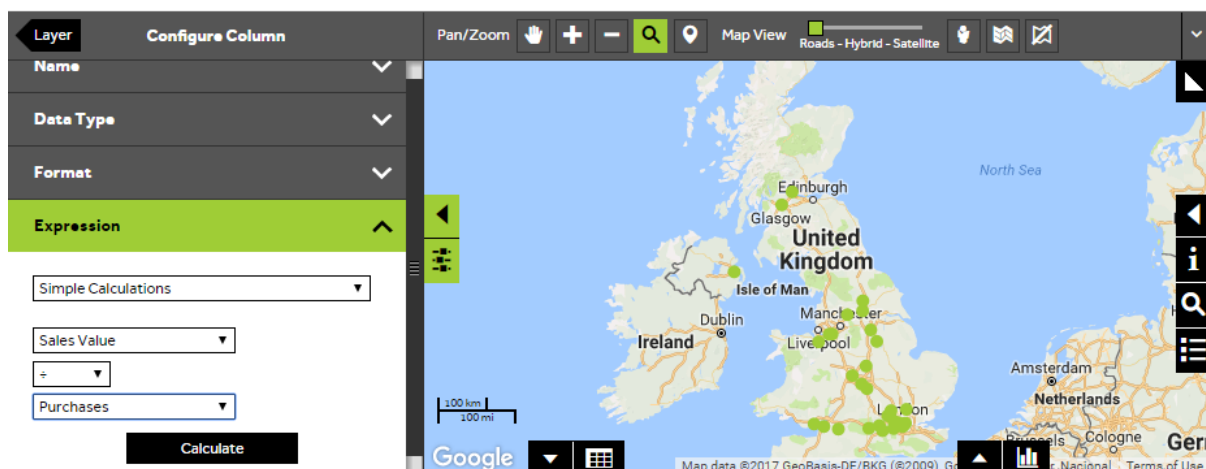
Simple Calculations – Allows you to add, subtract, multiply or divide existing columns in your layer.

Aggregation Calculations – Allows you to calculate the Sum, Average, Variance or Standard Deviation of an existing column in your layer.

Cartographic Calculations – Allows you to calculate the X/Y co-ordinates of each feature, and for areas, the surface area in square kilometres, miles, metres or yards.

Percentage Calculations - Allows you to identify a percentage value of an existing column in your layer.

- Press **Calculate** to add the new calculated column to your layer.



9 of 9

View your new data column

- To look at the new data column, open the **Data View** by clicking on the data grid icon (bottom left of map). Your new column will appear after the existing data columns in your layer.

The screenshot shows the Geoplan software interface. On the left, there is a 'Layer' panel with fields for Name, Data Type, Format, and Expression. Below this is a 'Simple Calculations' section with dropdown menus for 'Sales Value' and 'Purchases', and a 'Calculate' button. The main area displays a map of the United Kingdom with a data grid overlaid. The data grid has the following columns: ID, Postcode, Product, Sales Value, Purchases, Rep, NEW, and Created On. The data rows are as follows:

ID	Postcode	Product	Sales Value	Purchases	Rep	NEW	Created On
2116825	SW8 1RJ	C	905.4	6	Rep 1	150.90	2017/02/13 02:33:23 PM
2159716	RG14 5PH	A	162.53	7	Rep 1	23.22	2017/02/13 02:33:23 PM
3005951	BA1 1EF	A	432.8	3	Rep 1	144.27	2017/02/13 02:33:23 PM
3008569	HP4 1EF	C	755.39	3	Rep 2	251.80	2017/02/13 02:33:23 PM
3041073	LE67 2RD	C	919.47	3	Rep 2	306.49	2017/02/13 02:33:23 PM

At the bottom of the data grid, it shows '0 items' and navigation controls for pages 1 through 6.

What do you want to do next?

You may wish to create a report based on your Catchments or export the data from your Catchments to a file, please refer to the following sections for further assistance:

- Refer to: **Catchments Steps – Create Output - Report**
- Refer to: **Catchments Steps – Create Output - Export**
- Contact: **Geoplan Support**