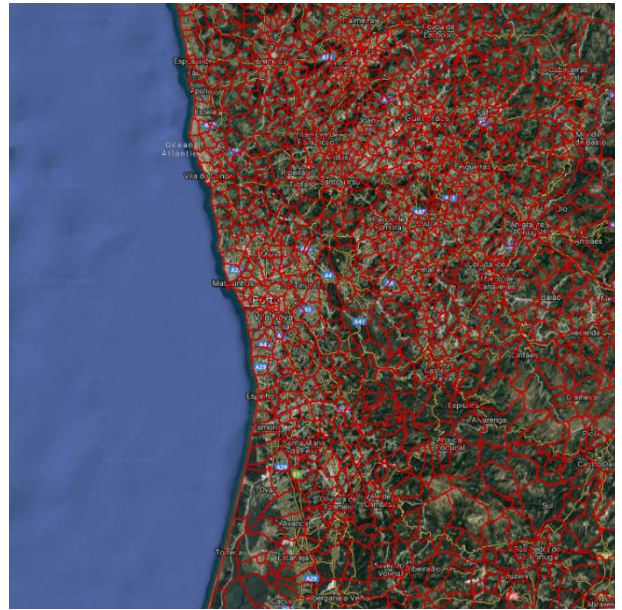
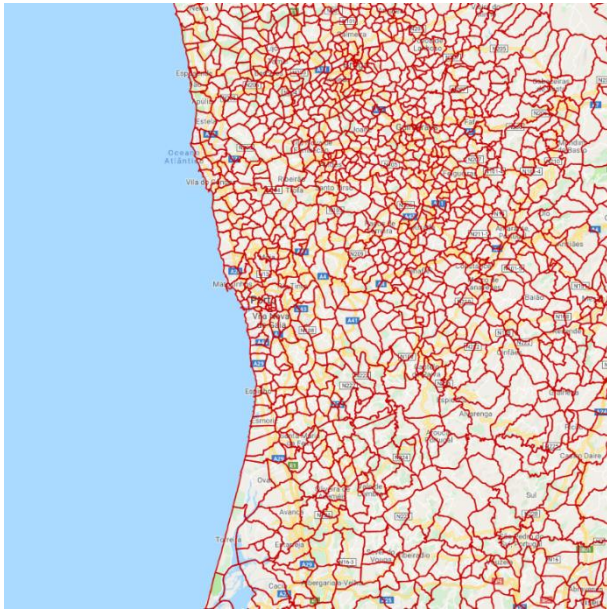


1. INTRODUCTION

The Portugal Parishes are provided by Instituto Nacional de Estatística (Statistics Portugal). The data provides a spatial reference for each of the Parishes in Portugal along with Population and Household data. The layer is useful for providing a reference to the different areas within Portugal as well as hotspot mapping and territory planning.

If you have any questions relating to the information in this document, please contact Geoplan Support on +44 (0)1423 722719, or email support@geoplan.com. The Support Team is available Monday – Friday, 9.00am – 5.00pm GMT, excluding UK public holidays.

2. IMAGES



3. DATA

Layer Name	Total Records
Parishes	4260

Source – Instituto Nacional de Estatística (Statistics Portugal)

Recency – 2011

Geographical Coverage and Accuracy – Portugal including the autonomous regions of Azores & Madeira

Projection – EPSG:4326. WGS84

Available Formats – Shapefile

Layer Type – Boundary

Attributes –

Attribute Name	Example
GEO_ID	1
PARISH	A Ver-o-Mar
ADMIN_ID	131301
POP_TOT	8362
POP_DENS	1624.04
HHD_TOT	6410
HHD_DENS	1244.93

4. DATA HEALTH

Data Health

Green

- The most up to date Parish Boundaries for Portugal

5. LICENSE INFORMATION

License type- Annual

Update cycle- Updated when required

6. FURTHER INFORMATION

Data Specification

Header Record	Description	Data Type	Maximum Field Size
GEO_ID	Geoplan unique identifier	Integer	N/A
PARISH	Parish name	Character	40
ADMIN_ID	Parish id	Character	6
POP_TOT	Population total	Integer	N/A
POP_DENS	Population per km ²	Decimal	6 (2dp)
HHD_TOT	Households total	Integer	N/A
HHD_DENS	Households per km ²	Decimal	6 (2dp)

Content Information

Demographics

The Population and Household data has been sourced by Statistics Portugal in 2011.

Copyright

Copyright Information: GEOPLAN © Geoplan Spatial Intelligence Limited.