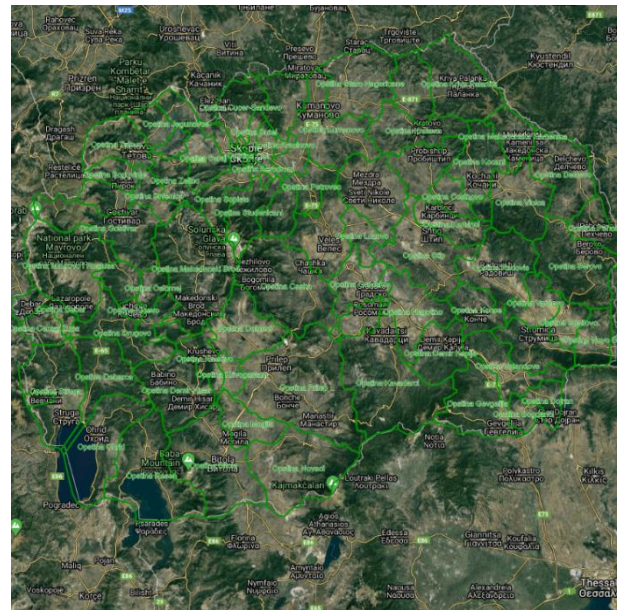
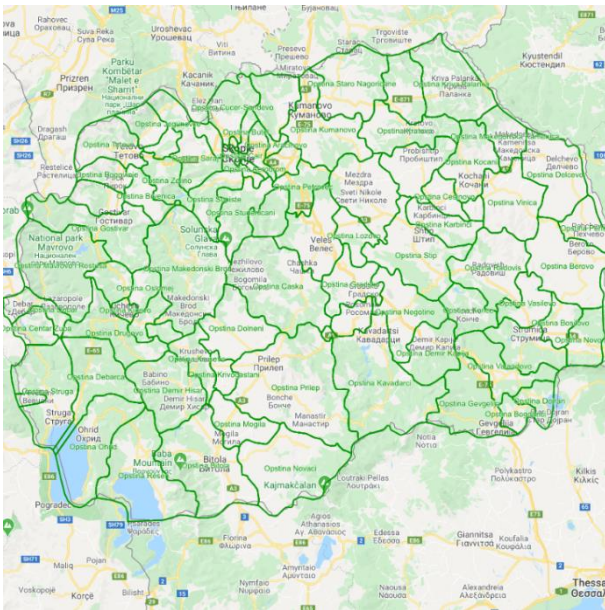


### 1. INTRODUCTION

The Macedonian Statistical Regions and Municipalities are provided by Natural Earth. The data provides a spatial reference for each of the Statistical Regions and Municipalities in Macedonia. The layer is useful for providing a reference to the different areas in Macedonia along with Territory and Hot Spot Mapping

If you have any questions relating to the information in this document, please contact Geoplan Support on +44 (0)1423 722719, or email [support@geoplan.com](mailto:support@geoplan.com). The Support Team is available Monday – Friday, 9.00am – 5.00pm GMT, excluding UK public holidays.

### 2. IMAGES



### 3. DATA

Layer Name	Total Records
Statistical Regions and Municipalities	84

**Source** – Natural Earth

**Recency** – February 2020

**Geographical Coverage and Accuracy** – Macedonia

**Projection** – WGS84

**Available Formats** – SKIN System Data Layer

**Layer Type** – Boundary

### 4. DATA HEALTH

<b>Data Health</b>	<b>Green</b>
--------------------	--------------

- Most up to date county boundaries for Macedonia

### 5. LICENSE INFORMATION

**License type** – Perpetual

**Update cycle** – Annual

## 6. FURTHER INFORMATION

### Data Specification

Header Record	Example	Description	Data Type	Maximum Field Size
ADMIN_NAME*	Ostina Aerodrom	Name of the statistical region	Text	N/A
ADMIN_ID	MKD-4802	Import column	Text	N/A
ADMIN_TYPE	Municipality	Denotes type of statistical region	Text	N/A
Region	Greater Skopje	The region the statistical region sits within	Text	N/A

\*Import Key Column

### Copyright

Copyright Information: GEOPLAN © Geoplan Spatial Intelligence Limited 2018.