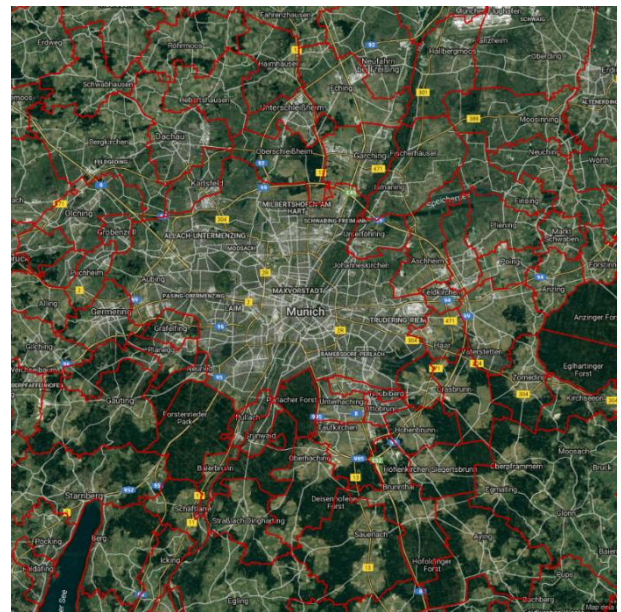
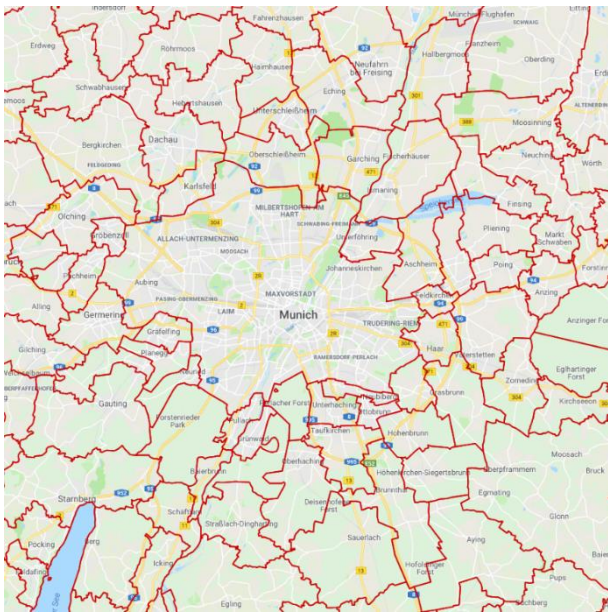


1. INTRODUCTION

The German Communities are provided by Zensus 2011. The data provides a spatial reference for each of the Communities in Germany. The layer is useful for providing a reference to the different areas within Germany as well as high level territory planning e.g. Area Manager or operations which have a small sized field team.

If you have any questions relating to the information in this document, please contact Geoplan Support on +44 (0)1423 722719, or email support@geoplan.com. The Support Team is available Monday – Friday, 9.00am – 5.00pm GMT, excluding UK public holidays.

2. IMAGES



3. DATA

Layer Name	Total Records
Communities	4757

Source – Zensus 2011

Recency – 2011

Geographical Coverage and Accuracy – Germany

Projection – WGS84

Available Formats – Shapefile

Layer Type – Boundary

Attributes –

Attribute Name	Example
GEO_ID	1
COMMUNITY	Aachen
ADMIN_ID	053340002

4. DATA HEALTH

Data Health Green

- Most up to date Community boundaries for Germany

5. LICENSE INFORMATION

License type– Annual

Update cycle– Updated when required

6. FURTHER INFORMATION

Data Specification

Header Record	Description	Data Type	Maximum Field Size
GEO_ID	Geoplan unique identifier	Integer	N/A
COMMUNITY	Community Name	Character	44
ADMIN_ID*	Admin Code	Character	9

*Import Key Column

Copyright

Copyright Information: GEOPLAN © Geoplan Spatial Intelligence Limited.