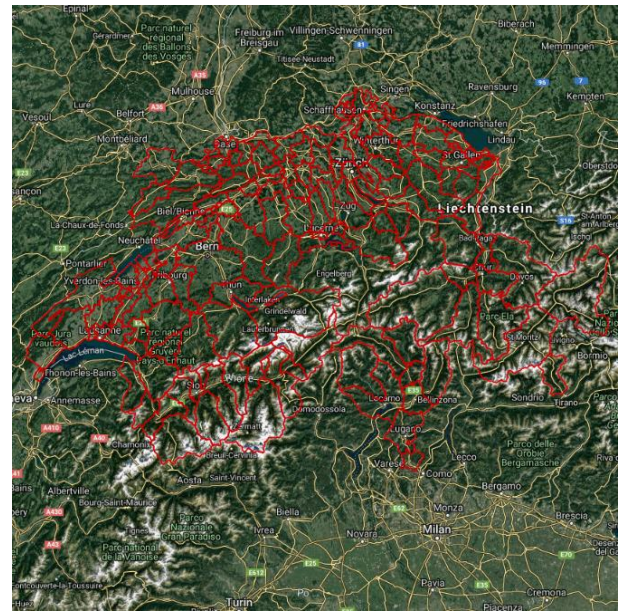


1. INTRODUCTION

The Swiss District Boundaries are provided by Swisstopo. The data provides a spatial reference for each of the District Boundaries in Switzerland. The layer is useful for providing a reference to the different areas within Switzerland, territory planning and hot spot mapping.

If you have any questions relating to the information in this document, please contact Geoplan Support on +44 (0)1423 722719, or email support@geoplan.com. The Support Team is available Monday – Friday, 9.00am – 5.00pm GMT, excluding UK public holidays.

2. IMAGES



3. DATA

Layer Name	Total Records
Districts	134

Source – Swisstopo – Federal office of Topography

Recency – 2019

Geographical Coverage and Accuracy – Switzerland (excludes areas that are not part of a District, see further information)

Projection – EPSG:4326. WGS84

Available Formats – Shapefile

Layer Type – Boundary

Attributes –

Attribute Name	Example
GEO_ID	1
DISTRICT	Oberaargau
ADMIN_ID	0244

4. DATA HEALTH

Data Health	Green
--------------------	--------------

- The most up to date District Boundaries for Switzerland

5. LICENSE INFORMATION

License type– Annual

Update cycle– Updated when required

6. FURTHER INFORMATION

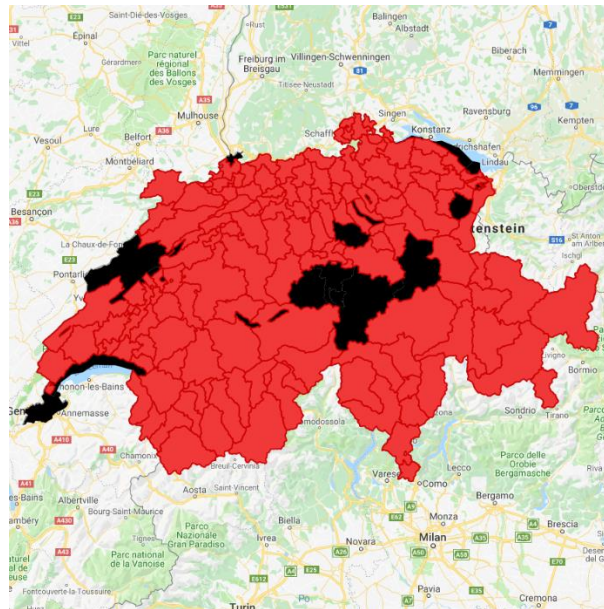
Data Specification

Header Record	Description	Data Type	Maximum Field Size
GEO_ID	Geoplan unique identifier	Integer	N/A
DISTRICT	District name	Character	50
ADMIN_ID*	District ID	Character	20

* Import Key Column

Coverage

The Switzerland Districts do not have 100% coverage over Switzerland, below shows an image denoting the areas cover. This is due to 10 out of the 26 Cantons dispensing with district level government.



Red – Included in the Districts

Black – Excluded from the Districts

Copyright

Copyright Information: GEOPLAN © Geoplan Spatial Intelligence Limited.