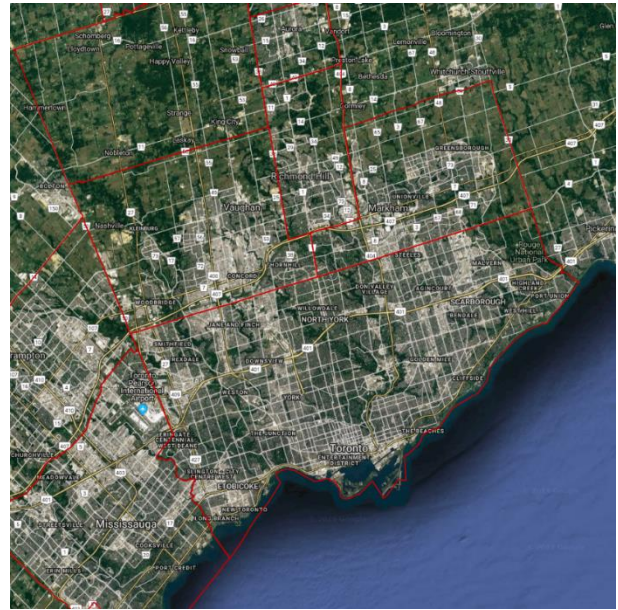


1. INTRODUCTION

The Canadian Census Sub Divisions are provided by Statistics Canada. The data provides a spatial reference for each of the Sub Divisions in Canada along with demographic data. The layer is useful for providing a reference to the different areas within Canada and for further analysis such as Territory Optimisation.

If you have any questions relating to the information in this document, please contact Geoplan Support on +44 (0)1423 722719, or email support@geoplan.com. The Support Team is available Monday – Friday, 9.00am – 5.00pm GMT, excluding UK public holidays.

2. IMAGES



3. DATA

Layer Name	Total Records
Sub Divisions	5,161

Source – Statistics Canada

Recency – 2016

Geographical Coverage and Accuracy – Canada

Projection – WGS84, EPSG: 4326

Available Formats – Shapefile, .csv

Layer Type – Boundary

4. DATA HEALTH

Data Health	Green
--------------------	--------------

- The most up to date Canadian Sub Divisions
- Includes population and household data

5. LICENSE INFORMATION

License type – Annual

Update cycle – Updated when required

6. FURTHER INFORMATION

Data Specification

Header Record	Description	Example	Data Type	Maximum Field Size
ADMIN_ID*	Census Sub Division number	593384	int	N/A
SUBDIVISIO	Census Sub Division Name	Abbey	char	51
DIVISION	Census Division Name	Prince	char	35
DIVISN_ID	Census Division number	1311	int	N/A
PROVINCE	Province name	Ontario	char	51
PROV_ID	Province ID	35	int	2
POP_TOT	Population total	656	int	N/A
POP_DENS	Population density. Population per km2	1.63	decimal (2dp)	10
HHD_TOT	Household total	301	int	N/A
HHD_DENS	Household density. Population per km2		decimal (2dp)	10

*Import Key Column

Copyright

Copyright Information: GEOPLAN © Geoplan Spatial Intelligence Limited.