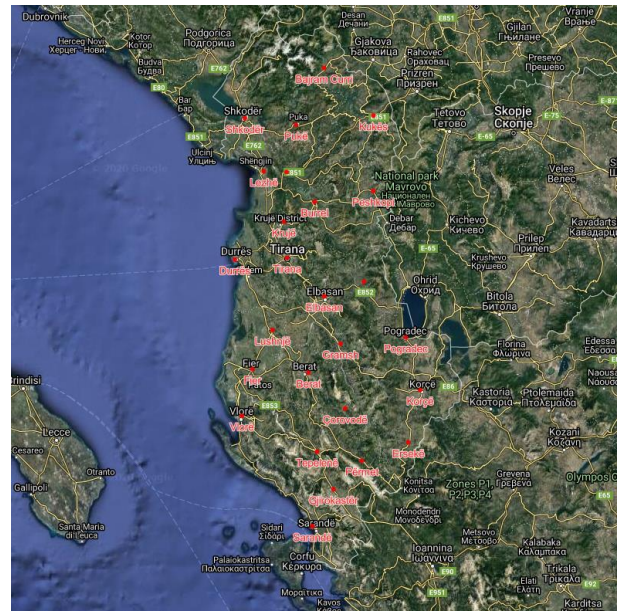
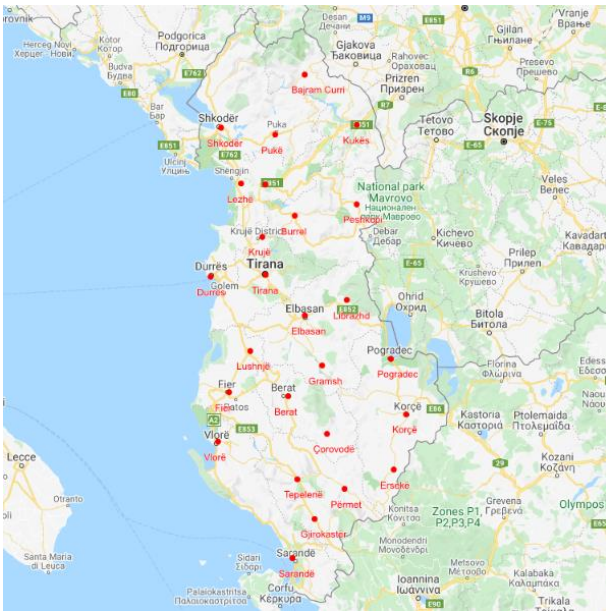


1. INTRODUCTION

The Albanian Populated Places are provided by Natural Earth. The data provides a spatial reference for the major towns and cities in Albania. The layer is useful for providing a reference to the distribution of the major towns and cities in Albania as well as the population in the cities and the surrounding areas.

If you have any questions relating to the information in this document, please contact Geoplan Support on +44 (0)1423 722719, or email support@geoplan.com. The Support Team is available Monday – Friday, 9.00am – 5.00pm GMT, excluding UK public holidays.

2. IMAGES



3. DATA

Layer Name	Total Records
Populated Places	26

Source – Natural Earth

Recency – 2020

Geographical Coverage and Accuracy – Albania

Projection – WGS84

Available Formats – Shapefile

Layer Type – Boundary

4. DATA HEALTH

Data Health
Green

- The most up to date populated place data from Natural Earth.

5. LICENSE INFORMATION

License type – Annual

Update cycle – Updated when required

6. FURTHER INFORMATION

Data Specification

Header Record	Description	Example	Data Type	Maximum Field Size
PLACE_NAME	The name of the town/city	Bajram Curri	Integer	N/A
PLACE_ID	Unique Identifier	1159119991	Character	15
POP	The population of the town/city	7967	Integer	N/A
POP_MET	The population of the surrounding metropolitan area	7967	Integer	N/A

*Please note the later cannot be used to import or search against.

Copyright

Copyright Information: GEOPLAN © Geoplan Spatial Intelligence Limited.