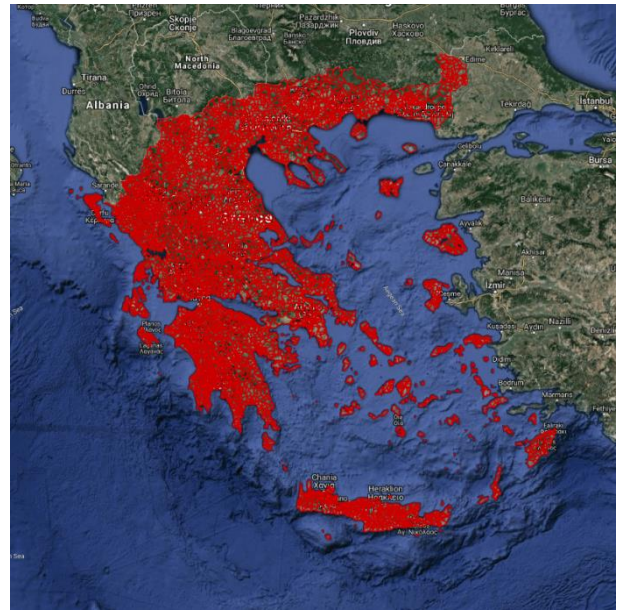
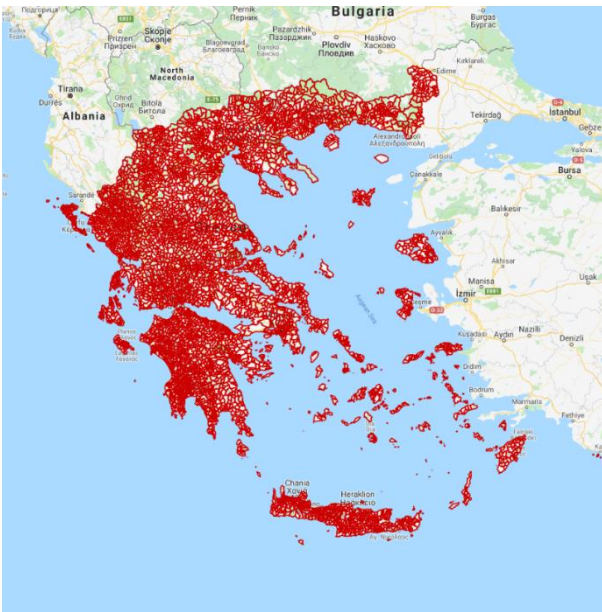


1. INTRODUCTION

The Greek Community Boundaries are provided by the Greek Statistical Authority. The data provides a spatial reference for each of the Communities in Greece. The layer is useful for providing a reference to the different areas within Greece as well as territory planning and hot spot mapping.

If you have any questions relating to the information in this document, please contact Geoplan Support on +44 (0)1423 722719, or email support@geoplan.com. The Support Team is available Monday – Friday, 9.00am – 5.00pm GMT, excluding UK public holidays.

2. IMAGES



3. DATA

Layer Name	Total Records
Communities	6132

Source – Greek Statistical Authority

Recency – 2011

Geographical Coverage and Accuracy – Greece

Projection – EPSG:4326. WGS84

Available Formats – Shapefile

Layer Type – Boundaries

Attributes –

Attribute Name	Example
GEO_ID	1
COMMUNITY	Τοπική Κοινότητα Αγίου Ηλία Πύργου (Αγίου Ηλία Λετρίνων)
ADMIN_ID	39010103

4. DATA HEALTH

Data Health Green

- Most up to date Community boundaries for Greece

5. LICENSE INFORMATION

License type– Annual

Update cycle– Updated when required

6. FURTHER INFORMATION

Data Specification

Header Record	Description	Data Type	Maximum Field Size
GEO_ID	Geoplan unique identifier	Integer	N/A
COMMUNITY	Community Name	Character	55
ADMIN_ID*	Community ID	Character	8

*Import Key Column

Copyright

Copyright Information: GEOPLAN © Geoplan Spatial Intelligence Limited.