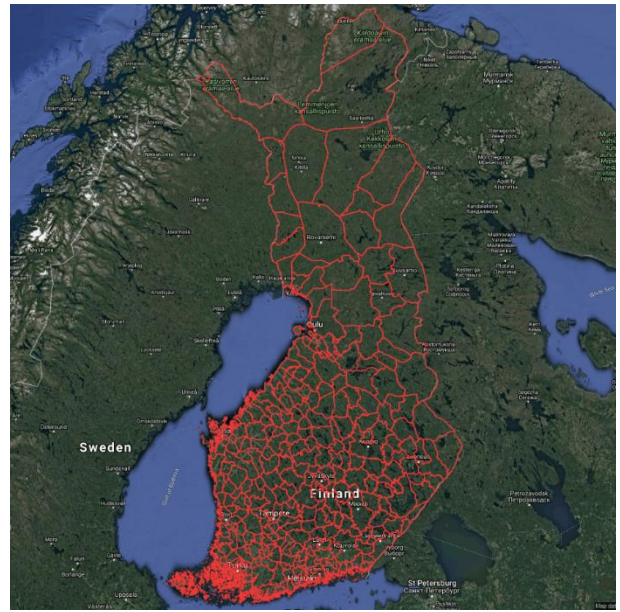


1. INTRODUCTION

The Finish Municipalities are provided by Statistics Finland. The data provides a spatial reference for each of the Municipalities in Finland. The layer is useful for providing a reference to the different areas within Finland as well as territory mapping and hot spot mapping.

If you have any questions relating to the information in this document, please contact Geoplan Support on +44 (0)1423 722719, or email support@geoplan.com. The Support Team is available Monday – Friday, 9.00am – 5.00pm GMT, excluding UK public holidays.

2. IMAGES



3. DATA

Layer Name	Total Records
Municipalities	311

Source – Statistics Finland

Recency – 2017

Geographical Coverage and Accuracy – Finland

Projection – EPSG:4326.WGS84

Available Formats – Shapefile

Layer Type – Boundary

Attributes –

Attribute Name	Example
GEO_ID	1
MUNICIPALI	Alajärvi
ADMIN_ID	1401
POP_TOT	37754
POP_DENS	52.83
HHD_TOT	25558
HHD_DENS	35.76

4. DATA HEALTH

Data Health Green

- The most up to date Municipality Boundaries
- The most up to date Population and Household data

5. LICENSE INFORMATION

License type– Annual

Update cycle– Updated when required

6. FURTHER INFORMATION

Data Specification

Header Record	Description	Data Type	Maximum Field Size
GEO_ID	Geoplan unique identifier	Integer	N/A
MUNICIPAL * **	Municipality name	Character	18
ADMIN_ID	Municipality id	Character	3
POP_TOT	Population total	Integer	N/A
POP_DENS	Population per km ²	Decimal	6 (2dp)
HHD_TOT	Households total	Integer	N/A
HHD_DENS	Households per km ²	Decimal	6 (2dp)

*Import Key Column

* Municipality automatically shortened to 10 characters due to restrictions with the Shapefile format

Content Information

Demographics

The demographic data has been sourced from Statistics Finland as part of the 2017 Population Registry System.

Copyright

Copyright Information: GEOPLAN © Geoplan Spatial Intelligence Limited.