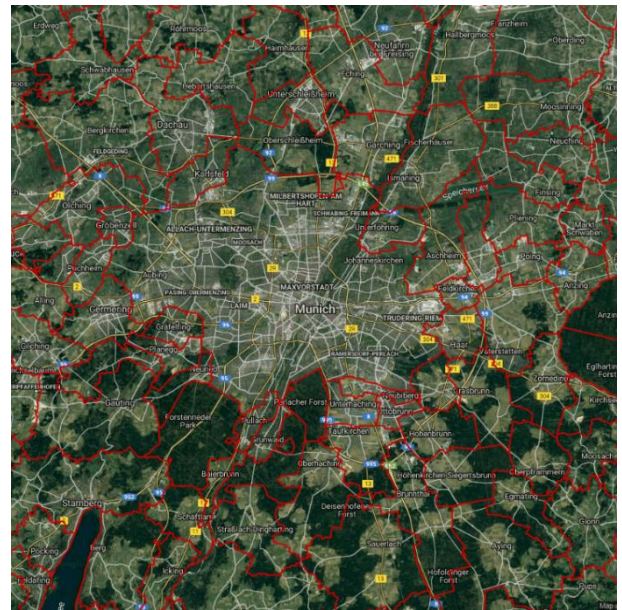
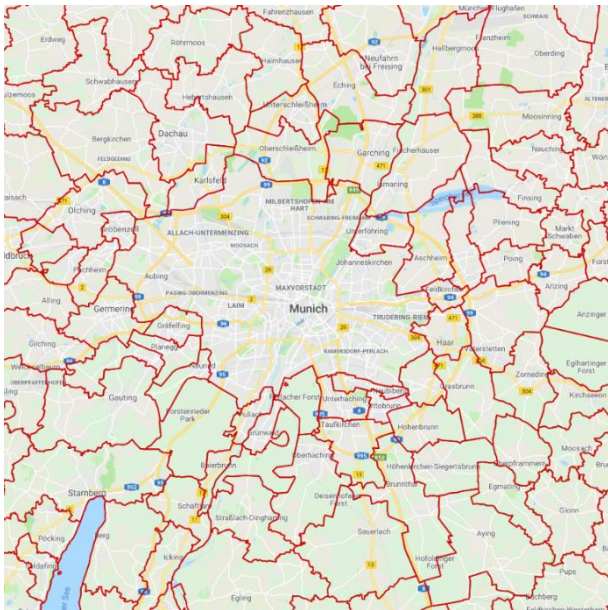


## 1. INTRODUCTION

The German Municipalities are provided by Zensus 2011. The data provides a spatial reference for each of the Communities in Germany. The layer is useful for providing a reference to the different areas within Germany as well as territory planning e.g. Area Manager or operations which have a small sized field team and hot spot mapping.

If you have any questions relating to the information in this document, please contact Geoplan Support on +44 (0)1423 722719, or email [support@geoplan.com](mailto:support@geoplan.com). The Support Team is available Monday – Friday, 9.00am – 5.00pm GMT, excluding UK public holidays.

## 2. IMAGES



## 3. DATA

Layer Name	Total Records
Municipalities	11,563

**Source** – Zensus 2011

**Recency** – 2011

**Geographical Coverage and Accuracy** – Germany

**Projection** – WGS84

**Available Formats** – Shapefile

**Layer Type** – Boundary

### Attributes –

Attribute Name	Example
GEO_ID	1
MUNICIPALI*	Adelebsen
ADMIN_ID	07235001
POP_TOT	1000
POP_DENS	2.45
HHD_TOT	500
HHD_DENS	1.23

#### 4. DATA HEALTH

**Data Health**

**Green**

- Most up to date Municipality boundaries for Germany
- Includes the latest census counts for population and household

#### 5. LICENSE INFORMATION

**License type**- Annual

**Update cycle**- Updated when required

#### 6. FURTHER INFORMATION

##### Data Specification

Header Record	Description	Data Type	Maximum Field Size
GEO_ID	Geoplan unique identifier	Integer	N/A
MUNICIPALI *	Municipality Name	Character	38
ADMIN_ID**	Admin Code	Character	8
POP_TOT	Population total	Integer	N/A
POP_DENS	Population density. Population per km2	Decimal	6(2dp)
HHD_TOT	Residential Household total	Integer	N/A
HHD_DENS	Residential Household density. Householder per km2	Decimal	5(2dp)

\*Municipality has been shortened to MUNICIPALI due to file format constraints, This data is not unique, therefore cannot be used as an import column.

\*\* Import Key Column

##### Content Information

##### Demographics

The Population and Household counts have been sourced from the German 2011 census. Population counts of 0 are present throughout the dataset where no information is available at source.

The Household data is defined as the total number of residential houses for a given area.

##### Copyright

Copyright Information: GEOPLAN © Geoplan Spatial Intelligence Limited.

