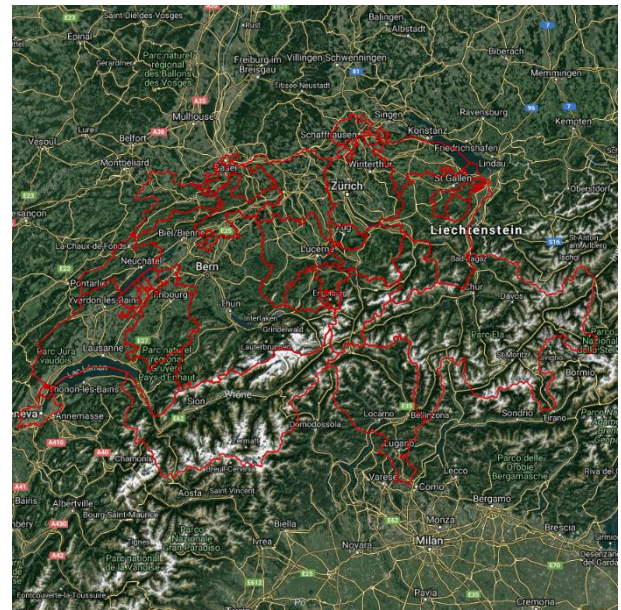


1. INTRODUCTION

The Swiss Canton Boundaries are provided by Cadastre.ch. The data provides a spatial reference for each of the Cantons in Switzerland. The layer is useful for providing a reference to the different areas within Switzerland as well as territory planning and hot spot mapping.

If you have any questions relating to the information in this document, please contact Geoplan Support on +44 (0)1423 722719, or email support@geoplan.com. The Support Team is available Monday – Friday, 9.00am – 5.00pm GMT, excluding UK public holidays.

2. IMAGES



3. DATA

Layer Name	Total Records
Cantons	26

Source – Swisstopo – Federal office of Topography
Recency – 2019

Geographical Coverage and Accuracy – Switzerland

Projection – EPSG:4326. WGS84

Available Formats – Shapefile

Layer Type – Boundary

Attributes –

Attribute Name	Example
GEO_ID	1
CANTON	Bern
ADMIN_ID	02

4. DATA HEALTH

Data Health	Green
--------------------	--------------

- The most up to date Canton Boundaries for Switzerland

5. LICENSE INFORMATION

License type– Annual

Update cycle– Updated when required

6. FURTHER INFORMATION

Data Specification

Header Record	Description	Data Type	Maximum Field Size
GEO_ID	Geoplan unique identifier	Integer	N/A
CANTON	Canton name	Character	50
ADMIN_ID*	Canton ID	Character	20

* Import Key Column

Copyright

Copyright Information: GEOPLAN © Geoplan Spatial Intelligence Limited.