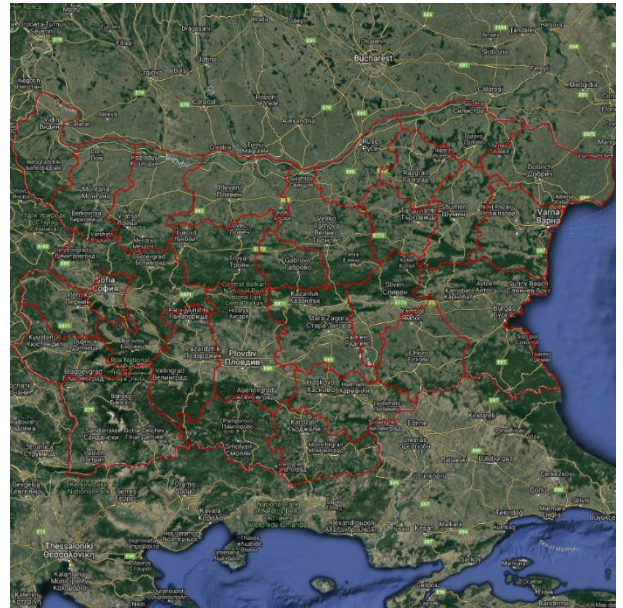


### 1. INTRODUCTION

The Bulgarian Province Boundaries are provided by Natural Earth. The data provides a spatial reference for each of the Provinces in Bulgaria. The layer is useful for providing a reference to the different areas within Bulgaria as well as territory planning and hot spot mapping.

If you have any questions relating to the information in this document, please contact Geoplan Support on +44 (0)1423 722719, or email support@geoplan.com. The Support Team is available Monday – Friday, 9.00am – 5.00pm GMT, excluding UK public holidays.

### 2. IMAGES



### 3. DATA

Layer Name	Total Records
Provinces	28

**Source** – Natural Earth

**Recency** – 2019

**Geographical Coverage and Accuracy** – Bulgaria

**Projection** – WGS84

**Available Formats** – Shapefile

**Layer Type** – Boundary

**Attributes** –

Attribute Name	Example
GEO_ID	1
PROVINCE	Blagoevgrad
ADMIN_ID	3002

### 4. DATA HEALTH

<b>Data Health</b>	<b>Green</b>
--------------------	--------------

- The most up to date Province Boundaries for Bulgaria

## 5. LICENSE INFORMATION

**License type**– Annual

**Update cycle**– Updated when required

## 6. FURTHER INFORMATION

### Data Specification

Header Record	Description	Data Type	Maximum Field Size
GEO_ID	Geoplan unique identifier	Integer	N/A
PROVINCE*	Province name	Character	14
ADMIN_ID	Province ID	Character	4

\*Import Key Column

### Copyright

Copyright Information: GEOPLAN © Geoplan Spatial Intelligence Limited.