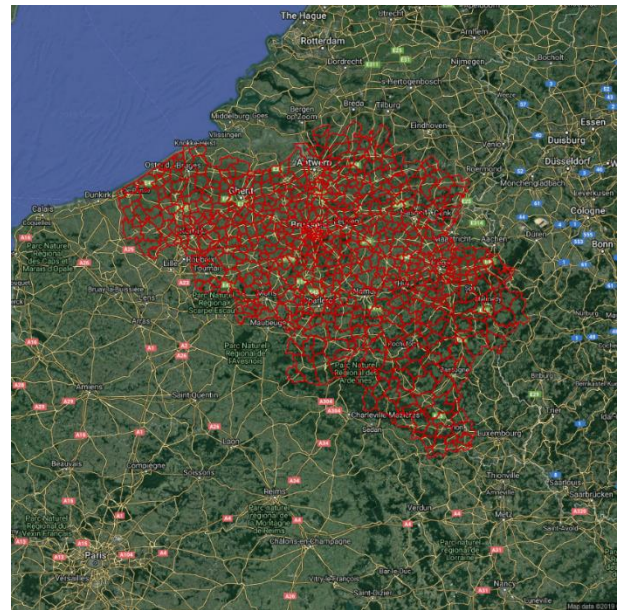


1. INTRODUCTION

The Belgian Municipality Boundaries are provided by the Belgian Statistical Office (Statbel). The data provides a spatial reference for each of the Municipalities in Belgium along with Population and Household counts and densities. The layer is useful for providing a reference to the different areas within Belgium as well as territory planning and hot spot mapping.

If you have any questions relating to the information in this document, please contact Geoplan Support on +44 (0)1423 722719, or email support@geoplan.com. The Support Team is available Monday – Friday, 9.00am – 5.00pm GMT, excluding UK public holidays.

2. IMAGES



3. DATA

Layer Name	Total Records
Municipalities	589

Source – Belgian Statistical Office - Statbel

Recency – 2018

Geographical Coverage and Accuracy – Belgium

Projection – EPSG:4326. WGS84

Available Formats – Shapefile

Layer Type - Boundary

Attributes –

Attribute Name	Example
GEO_ID	1
MUNICIPALI	Aiseau-Presles
ADMIN_ID	52074
POP_TOT	10643
POP_DENS	475.69
HHD_TOT	4444
HHD_DENS	198.62

4. DATA HEALTH

Data Health Green

- Most up to date Municipality boundaries for Belgium
- Includes demographic variables from the 2011 census

5. LICENSE INFORMATION

License type— Annual

Update cycle— Updated when required

6. FURTHER INFORMATION

Data Specification

Header Record	Description	Data Type	Maximum Field Size
GEO_ID	Geoplan unique identifier	Integer	N/A
MUNICIPALI*	Municipality name	Character	27
ADMIN_ID	Municipality ID	Character	5
POP_TOT	Population total	Integer	N/A
POP_DENS	Population per km ²	Decimal	6 (2dp)
HHD_TOT	Households total	Integer	N/A
HHD_DENS	Households per km ²	Decimal	6 (2dp)

*Import Key Column

Content Information

Demographic Data

The population and household totals and density have been included from the 2011 Census.

Copyright

Copyright Information: GEOPLAN © Geoplan Spatial Intelligence Limited.